



**GE Healthcare**

---

# **Technical Publications**

**2391078-2-800  
Revision 1**

**Seno Advantage2 WorkStation**

**CONFORMANCE STATEMENT  
for DICOM V3.0**

**do not duplicate**

**Copyright© 2006 By General Electric Co.**

THIS PAGE LEFT INTENTIONALLY BLANK

### REVISION HISTORY

<b>Rev</b>	<b>Date</b>	<b>Reason for change</b>
1	February 23, 2006	Context SA2.0 M4 Creation based on 2391078-800 rev 1

THIS PAGE LEFT INTENTIONALLY BLANK

## TABLE OF CONTENTS

1.	INTRODUCTION .....	7
1.1	OVERVIEW .....	7
1.2	OVERALL DICOM CONFORMANCE STATEMENT DOCUMENT STRUCTURE .....	8
1.3	INTENDED AUDIENCE .....	9
1.4	SCOPE AND FIELD OF APPLICATION .....	10
1.5	IMPORTANT REMARKS .....	10
1.6	REFERENCES .....	11
1.7	DEFINITIONS .....	11
1.8	SYMBOLS AND ABBREVIATIONS .....	11
2.	NETWORKING CONFORMANCE STATEMENT .....	12
3.	SC INFORMATION OBJECT IMPLEMENTATION .....	13
3.1	INTRODUCTION .....	13
3.2	SC ENTITY-RELATIONSHIP MODEL .....	13
3.2.1	ENTITY DESCRIPTIONS .....	14
3.2.2	Seno Advantage Mapping of DICOM entities .....	14
3.3	SC-IOD MODULE TABLE .....	14
3.4	SC-INFORMATION MODULE DEFINITIONS .....	15
3.4.1	Common Patient Entity Modules .....	16
3.4.1.1	Patient Module .....	16
3.4.2	Common Study Entity Modules .....	16
3.4.2.1	General Study Module .....	16
3.4.2.2	Patient Study Module .....	16
3.4.3	Common Series Entity Modules .....	17
3.4.3.1	General Series Module .....	17
3.4.4	Common Equipment Entity Modules .....	17
3.4.4.1	General Equipment Module .....	17
3.4.4.1.1	General Equipment Attribute Descriptions .....	17
3.4.4.1.1.1	Pixel Padding Value .....	17
3.4.5	Common Image Entity Modules .....	18
3.4.5.1	General Image Module .....	18
3.4.5.1.1	General Image Attribute Descriptions .....	18
3.4.5.1.1.1	Patient Orientation .....	18
3.4.5.1.1.2	Image Type .....	18
3.4.5.1.1.3	Derivation Description and Source Image Sequence .....	18

3.4.5.1.1.4	Lossy Image Compression .....	18
3.4.5.2	Image Pixel Module .....	19
3.4.6	Common Overlay Modules.....	19
3.4.7	Common Lookup Table Modules .....	19
3.4.7.1	VOI LUT module .....	19
3.4.7.2	Modality LUT module.....	20
3.4.8	General Modules.....	20
3.4.8.1	SOP Common Module.....	20
3.4.9	SC Modules.....	20
3.4.9.1	SC Equipment Module .....	20
3.4.9.2	SC Image Module.....	21
3.5	PRIVATE DATA DICTIONARY .....	21
4.	Basic text SR INFORMATION OBJECT IMPLEMENTATION .....	22
4.1	INTRODUCTION .....	22
4.2	BASIC TEXT SR ENTITY-RELATIONSHIP MODEL.....	22
4.2.1	ENTITY DESCRIPTIONS .....	23
4.2.2	Seno Advantage Mapping of DICOM entities .....	23
4.3	BASIC TEXT SR-IOD MODULE TABLE .....	23
4.4	BASIC TEXT SR-INFORMATION MODULE DEFINITIONS .....	24
4.4.1	Common Patient Entity Modules.....	25
4.4.1.1	Patient Module.....	25
4.4.2	Common Study Entity Modules.....	25
4.4.2.1	General Study Module.....	25
4.4.3	SR Document Series entity Modules .....	26
4.4.3.1	SR Document Series Module .....	26
4.4.3.2	General Equipment Module .....	26
4.4.4	SR Document Entity Modules .....	26
4.4.4.1	SR Document General Module.....	26
4.4.4.2	SR Document Content Module.....	27
4.4.5	General Modules.....	27
4.4.5.1	SOP Common Module.....	27
4.5	PRIVATE DATA DICTIONARY .....	27
4.6	EXAM NOTE - PRESENTATION TEMPLATE.....	27
4.6.1	TID SA2.0 MINIREPORT: Exam Note Presentation .....	27
4.6.2	TID 1002 Observer Context .....	28
4.6.3	TID 1003 Person observer identifying attributes.....	28
4.6.4	TID 1204 Language of Content Item and descendants.....	28
4.7	Private Coded Entries .....	28
5.	DIGITAL MAMMOGRAPHY XRAY INFORMATION OBJET IMPLEMENTATION .....	29

# 1. INTRODUCTION

## 1.1 OVERVIEW

This DICOM Conformance Statement describes only the services used by the Seno Advantage Application.

It is divided into Sections as described below:

**Section 1 (Introduction)**, which describes the overall structure, intent, and references for this Conformance Statement

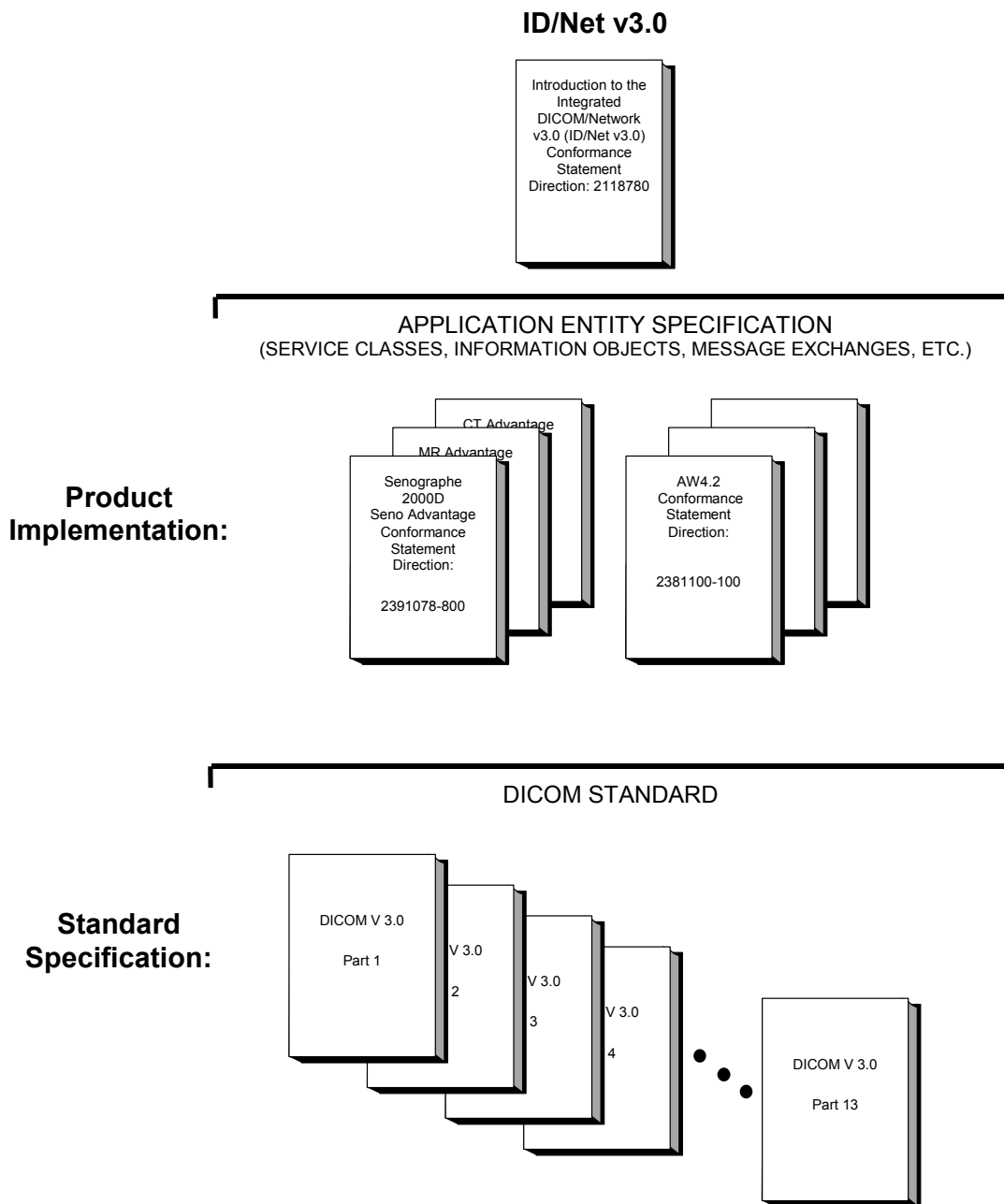
**Section 2 (Network Conformance Statement)**, which specifies the GEMS equipment compliance to the DICOM requirements for the implementation of Networking features.

**Section 3 (SC Information Object Implementation)**, which specifies the GEMS equipment compliance to the DICOM requirements for the implementation of SC Information Object Implementation feature.

**Section 4 (Basic Text SR Object Implementation)**, which specifies the GEMS equipment compliance to the DICOM requirements for the implementation of Basic Text SR Information Object Implementation feature.

**1.2 OVERALL DICOM CONFORMANCE STATEMENT DOCUMENT STRUCTURE**

The Documentation Structure of the GEMS Conformance Statements and their relationship with the DICOM v3.0 Conformance Statements is shown in the Illustration below.





This document specifies the DICOM v3.0 implementation. It is entitled:

***Seno Advantage Workstation***  
*Conformance Statement for DICOM v3.0*  
*Direction 2391078-800*

This DICOM Conformance Statement documents the DICOM v3.0 Conformance Statement and Technical Specification required to interoperate with the GEMS network interface. Introductory information, which is applicable to all GEMS Conformance Statements, is described in the document:

*Introduction to the Integrated DICOM/Network v3.0 (ID/Net v3.0)*  
*Conformance Statement*  
*Direction: 2118780.*

This Introduction familiarizes the reader with DICOM terminology and general concepts. It should be read prior to reading the individual products' GEMS Conformance Statements.

The GEMS Conformance Statement, contained in this document, also specifies the Lower Layer communications which it supports (e.g., TCP/IP). However, the Technical Specifications are defined in the DICOM v3.0 Part 8 standard.

For more information including Network Architecture and basic DICOM concepts, please refer to the Introduction.

For more information regarding DICOM, copies of the Standard may be obtained on the Internet at <http://medical.nema.org>. Comments on the Standard may be addressed to:

DICOM Secretariat  
NEMA  
1300 N. 17th Street, Suite 1847  
Rosslyn, VA 22209  
USA  
Phone: +1.703.841.3200

### **1.3 INTENDED AUDIENCE**

The reader of this document is concerned with software design and/or system integration issues. It is assumed that the reader of this document is familiar with the DICOM v3.0 Standards and with the terminology and concepts which are used in those Standards.

If readers are unfamiliar with DICOM v3.0 terminology they should first refer to the document listed below, then read the DICOM v3.0 Standard itself, prior to reading this DICOM Conformance Statement document.

*Introduction to the Integrated DICOM/Network v3.0 (ID/Net v3.0)*  
*Conformance Statement*  
*Direction: 2118780*

#### 1.4 SCOPE AND FIELD OF APPLICATION

It is the intent of this document, in conjunction with the *Introduction to the Integrated DICOM/Network v3.0 (ID/Net v3.0) Conformance Statement, Direction: 2118780*, to provide an unambiguous specification for GEMS implementations. This specification, called a Conformance Statement, includes a DICOM v3.0 Conformance Statement and is necessary to ensure proper processing and interpretation of GEMS medical data exchanged using DICOM v3.0. The GEMS Conformance Statements are available to the public.

The reader of this DICOM Conformance Statement should be aware that different GEMS devices are capable of using different Information Object Definitions. For example, a GEMS CT Scanner may send images using the CT Information Object, MR Information Object, Secondary Capture Object, etc.

Included in this DICOM Conformance Statement are the Module Definitions which define all data elements used by this GEMS implementation. If the user encounters unspecified private data elements while parsing a GEMS Data Set, the user is well advised to ignore those data elements (per the DICOM v3.0 standard). Unspecified private data element information is subject to change without notice. If, however, the device is acting as a "full fidelity storage device", it should retain and re-transmit all of the private data elements which are sent by GEMS devices.

#### 1.5 IMPORTANT REMARKS

The use of these DICOM Conformance Statements, in conjunction with the DICOM v3.0 Standards, is intended to facilitate communication with GE imaging equipment. However, **by itself, it is not sufficient to ensure that inter-operation will be successful.** The **user (or user's agent)** needs to proceed with caution and address at least four issues:

- **Integration** - The integration of any device into an overall system of interconnected devices goes beyond the scope of standards (DICOM v3.0), and of this introduction and associated DICOM Conformance Statements when interoperability with non-GE equipment is desired. The responsibility to analyze the applications requirements and to design a solution that integrates GE imaging equipment with non-GE systems is the **user's** responsibility and should not be underestimated. The **user** is strongly advised to ensure that such an integration analysis is correctly performed.
- **Validation** - Testing the complete range of possible interactions between any GE device and non-GE devices, before the connection is declared operational, should not be overlooked. Therefore, the **user** should ensure that any non-GE provider accepts full responsibility for all validation required for their connection with GE devices. This includes the accuracy of the image data once it has crossed the interface between the GE imaging equipment and the non-GE device and the stability of the image data for the intended applications.

Such a validation is required before any clinical use (diagnosis and/or treatment) is performed. It applies when images acquired on GE imaging equipment are processed/displayed on a non-GE device, as well as when images acquired on non-GE equipment is processed/displayed on a GE console or workstation.

- **Future Evolution** - GE understands that the DICOM Standard will evolve to meet the user's growing requirements. GE is actively involved in the development of the DICOM v3.0 Standard. DICOM v3.0 will incorporate new features and technologies and GE may follow the evolution of the Standard. The GEMS protocol is based on DICOM v3.0 as specified in each DICOM Conformance Statement. Evolution of the Standard may require changes to devices which have implemented DICOM v3.0. **In addition, GE reserves the right to discontinue or make changes to the support of communications features (on its products) reflected on by these DICOM Conformance Statements.** The user should ensure that any non-GE provider, which connects with GE devices, also plans for the future evolution of the DICOM Standard. Failure to do so will likely result in the loss of function and/or connectivity as the DICOM Standard changes and GE Products are enhanced to support these changes.
- **Interaction** - It is the sole responsibility of the **non-GE provider** to ensure that communication with the interfaced equipment does not cause degradation of GE imaging equipment performance and/or function.

## 1.6 REFERENCES

A list of references which is applicable to all GEMS Conformance Statements is included in the *Introduction to the Integrated DICOM/Network v3.0 (ID/Net v3.0) Conformance Statement, Direction: 2118780.*

The information object implementation refers to DICOM PS 3.3 (Information Object Definition) and DICOM supplement 32: Digital X-Ray Supplement.

## 1.7 DEFINITIONS

A set of definitions which is applicable to all GEMS Conformance Statements is included in the *Introduction to the Integrated DICOM/Network v3.0 (ID/Net v3.0) Conformance Statement, Direction: 2118780.*

## 1.8 SYMBOLS AND ABBREVIATIONS

A list of symbols and abbreviations which is applicable to all GEMS Conformance Statements is included in the *Introduction to the Integrated DICOM/Network v3.0 (ID/Net v3.0) Conformance Statement, Direction: 2118780.*

## **2. NETWORKING CONFORMANCE STATEMENT**

All services are inherited from AW4.2 (e.g. Printing, Networking).  
See AW4.2 DCS manual ref. 2381100-100.

## 3. SC INFORMATION OBJECT IMPLEMENTATION

### 3.1 INTRODUCTION

This section specifies the use of the DICOM SC Image IOD to represent the information included in SC images produced by this implementation. Corresponding attributes are conveyed using the module construct. The contents of this section are:

3.2- SC ENTITY-RELATIONSHIP MODEL

3.3- SC-IOD MODULE TABLE

3.4- SC-INFORMATION MODULE DEFINITIONS

3.5- PRIVATE DATA DICTIONARY

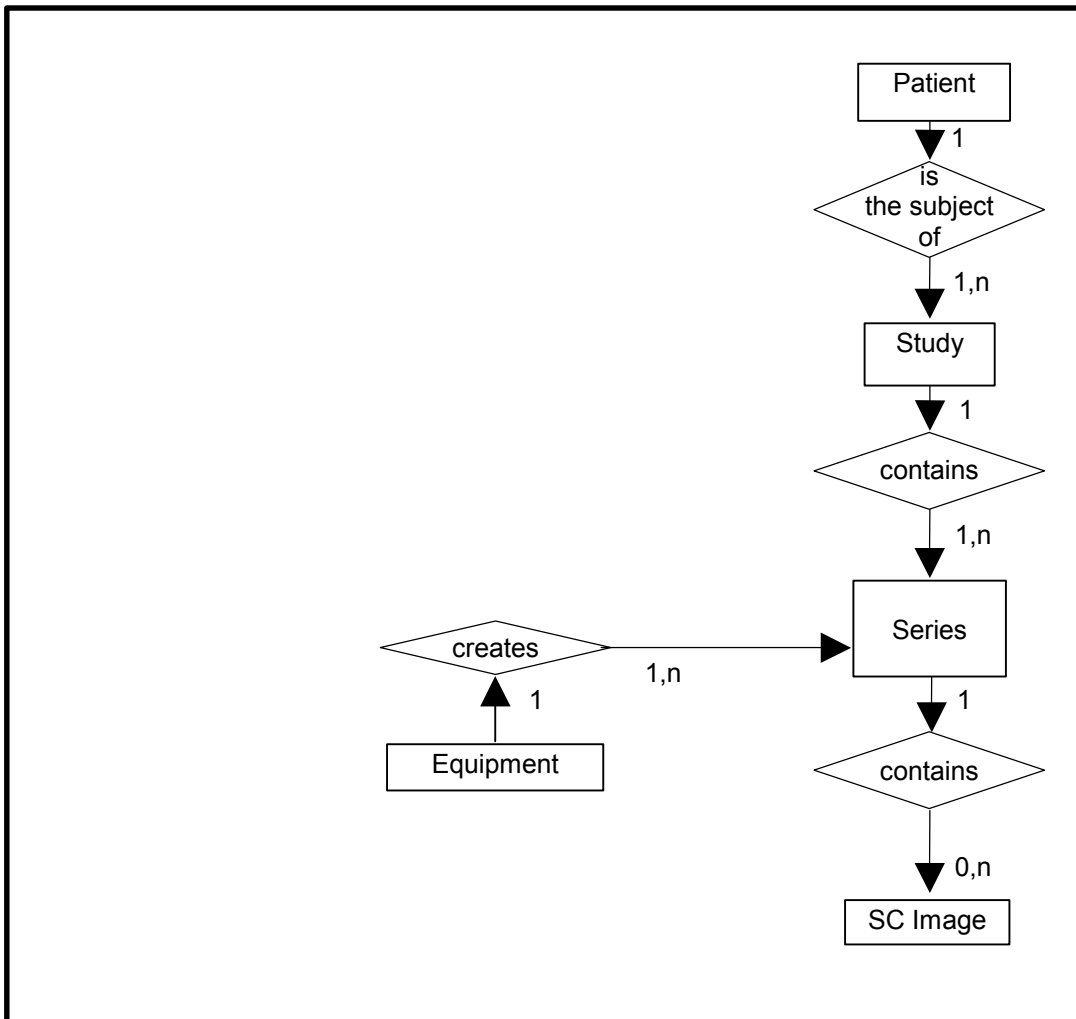
### 3.2 SC ENTITY-RELATIONSHIP MODEL

The Entity-Relationship diagram for the SC Image interoperability schema is shown in **Illustration 3.2.1**. In this figure, the following diagrammatic convention is established to represent the information organization:

- each entity is represented by a rectangular box
- each relationship is represented by a diamond shaped box.
- the fact that a relationship exists between two entities is depicted by lines connecting the corresponding entity boxes to the relationship boxes.

The relationships are fully defined with the maximum number of possible entities in the relationship shown. In other words, the relationship between Series and Image can have up to **n** Images per Series, but the Patient to Study relationship has 1 Study for each Patient (a Patient can have more than one Study on the system, however each Study will contain all of the information pertaining to that Patient).

ILLUSTRATION 3.2-1  
SC IMAGE ENTITY RELATIONSHIP DIAGRAM



**3.2.1 ENTITY DESCRIPTIONS**

Please refer to DICOM Standard Part 3 (Information Object Definitions) for a description of each of the entities contained within the SC Information Object.

**3.2.2 Seno Advantage Mapping of DICOM entities**

TABLE 3.2-1  
MAPPING OF DICOM ENTITIES TO SENO ADVANTAGE ENTITIES

DICOM	Seno Advantage Entity
Patient	Patient
Study	Exam
Series	Series
Image	Image

**3.3 SC-IOD MODULE TABLE**

Within an entity of the DICOM v3.0 SC IOD, attributes are grouped into related set of attributes. A set of related attributes is termed a module. A module facilitates the understanding of the semantics concerning the attributes and how the attributes are related with each other. A module grouping does not infer any encoding of information into datasets.

Table 3.3.1 identifies the defined modules within the entities which comprise the DICOM v3.0 SC IOD. Modules are identified by Module Name.

See DICOM v3.0 Part 3 for a complete definition of the entities, modules, and attributes.

**TABLE 3.3.1  
SC IMAGE IOD MODULES**

<b>Entity Name</b>	<b>Module Name</b>	<b>Reference</b>
Patient	Patient	3.4.1.1
Study	General Study	3.4.2.1
	Patient Study	3.4.2.2
Series	General Series	3.4.3.1
Equipment	General Equipment	3.4.4.1
	SC Equipment	3.4.9.1
Image	General Image	3.4.5.1
	Image Pixel	3.4.5.2
	SC Image	3.4.9.2
	Modality LUT	3.4.7.2
	VOI LUT	3.4.7.1
	SOP Common	3.4.8.1

**3.4 SC-INFORMATION MODULE DEFINITIONS**

Please refer to DICOM v3.0 Standard Part 3 (Information Object Definitions) for a description of each of the entities and modules contained within the SC Information Object.

The following modules are included to convey Enumerated Values, Defined Terms, and Optional Attributes supported. Type 1 & Type 2 Attributes are also included for completeness and to define what values they may take and where these values are obtained from. It should be noted that they are the same ones as defined in the DICOM v3.0 Standard Part 3 (Information Object Definitions).

**3.4.1 Common Patient Entity Modules**

**3.4.1.1 Patient Module**

This section specifies the Attributes of the Patient that describe and identify the Patient who is the subject of a diagnostic Study. This Module contains Attributes of the patient that are needed for diagnostic interpretation of the Image and are common for all studies performed on the patient.

**TABLE 3.4-1  
PATIENT MODULE ATTRIBUTES**

Attribute Name	Tag	Type	Attribute Description
Patient's Name	(0010,0010)	2	Original
Patient ID	(0010,0020)	2	Original
Patient's Birth Date	(0010,0030)	2	Original
Patient's Sex	(0010,0040)	2	Original

**3.4.2 Common Study Entity Modules**

The following Study IE Modules are common to all Composite Image IODs which reference the Study IE. These Module contain Attributes of the patient and study that are needed for diagnostic interpretation of the image.

**3.4.2.1 General Study Module**

This section specifies the Attributes which describe and identify the Study performed upon the Patient.

**TABLE 3.4-2  
GENERAL STUDY MODULE ATTRIBUTES**

Attribute Name	Tag	Type	Notes
Study Instance UID	(0020,000D)	1	Original
Study Date	(0008,0020)	2	Original
Study Time	(0008,0030)	2	Original
Referring Physician's Name	(0008,0090)	2	Original
Study ID	(0020,0010)	2	Original
Accession Number	(0008,0050)	2	Original
Study Description	(0008,1030)	3	Original

**3.4.2.2 Patient Study Module**

This section defines Attributes that provide information about the Patient at the time the Study was performed.

**TABLE 3.4-3  
PATIENT STUDY MODULE ATTRIBUTES**

Attribute Name	Tag	Type	Attribute Description
Patient's Age	(0010,1010)	3	Original
Patient's Size	(0010,1020)	3	Original
Patient's Weight	(0010,1030)	3	Original



**3.4.3 Common Series Entity Modules**

The following Series IE Modules are common to all Composite Image IODs which reference the Series IE.

**3.4.3.1 General Series Module**

This section specifies the Attributes which identify and describe general information about the Series within a Study.

**TABLE 3.4-4  
GENERAL SERIES MODULE ATTRIBUTES**

<b>Attribute Name</b>	<b>Tag</b>	<b>Type</b>	<b>Attribute Description</b>
Modality	(0008,0060)	1	Original.
Series Instance UID	(0020,000E)	1	Generated
Series Number	(0020,0011)	2	Generated
Series Description	(0008,103E)	3	Screen Save
Patient Position	(0018,5100)	2C	

**3.4.4 Common Equipment Entity Modules**

The following Equipment IE Module is common to all Composite Image IODs which reference the Equipment IE.

**3.4.4.1 General Equipment Module**

This section specifies the Attributes which identify and describe the piece of equipment which produced a Series of Images.

**TABLE 3.4-5  
GENERAL EQUIPMENT MODULE ATTRIBUTES**

<b>Attribute Name</b>	<b>Tag</b>	<b>Type</b>	<b>Attribute Description</b>
Manufacturer	(0008,0070)	2	derived from Original image
Institution Name	(0008,0080)	3	derived from Original image
Institution Address	(0008,0081)	3	derived from Original image
Station Name	(0008,1010)	3	derived from Original image
Manufacturer's Model Name	(0008,1090)	3	derived from Original image
Software Versions	(0018,1020)	3	derived from Original image

**3.4.4.1.1 General Equipment Attribute Descriptions**

**3.4.4.1.1.1 Pixel Padding Value**

Not used

**3.4.5 Common Image Entity Modules**

The following Image IE Modules are common to all Composite Image IODs which reference the Image IE.

**3.4.5.1 General Image Module**

This section specifies the Attributes which identify and describe an image within a particular series.

**TABLE 3.4-6  
GENERAL IMAGE MODULE ATTRIBUTES**

<b>Attribute Name</b>	<b>Tag</b>	<b>Type</b>	<b>Attribute Description</b>
Image Number	(0020,0013)	2	Generated
Patient Orientation	(0020,0020)	2C	See 3.4.5.1.1.1.
Image Date	(0008,0023)	2C	derived from original
Image Time	(0008,0033)	2C	derived from original
Image Type	(0008,0008)	3	See 3.4.5.1.1.2.

**3.4.5.1.1 General Image Attribute Descriptions**

**3.4.5.1.1.1 Patient Orientation**

derived from original

**3.4.5.1.1.2 Image Type**

This type is set to:

DERIVED\SECONDARY\\SCREEN SAVE in case of Screen Save

**3.4.5.1.1.3 Derivation Description and Source Image Sequence**

This sequence is not encoded

**3.4.5.1.1.4 Lossy Image Compression**

Not Supported

**3.4.5.2 Image Pixel Module**

This section specifies the Attributes that describe the pixel data of the image.

**TABLE 3.4-7  
IMAGE PIXEL MODULE ATTRIBUTES**

<b>Attribute Name</b>	<b>Tag</b>	<b>Type</b>	<b>Attribute Description</b>
Samples per Pixel	(0028,0002)	1	1
Photometric Interpretation	(0028,0004)	1	Set to MONOCHROME1 or MONOCHROME2 according to Original Image.
Rows	(0028,0010)	1	
Columns	(0028,0011)	1	
Bits Allocated	(0028,0100)	1	
Bits Stored	(0028,0101)	1	
High Bit	(0028,0102)	1	
Pixel Representation	(0028,0103)	1	
Pixel Data	(7FE0,0010)	1	

**3.4.6 Common Overlay Modules**

This module is not implemented for this IOD.

**3.4.7 Common Lookup Table Modules**

**3.4.7.1 VOI LUT module**

This section specifies the Attributes that describe the VOI LUT.

**TABLE 3.4-8  
VOI LUT MODULE ATTRIBUTES**

<b>Attribute Name</b>	<b>Tag</b>	<b>Type</b>	<b>Attribute Description</b>
Window Center	(0028,1050)	3	One value is set. This value is derived from the Window Center present in the image when the operator asked for the Screen Save.
Window Width	(0028,1051)	1C	One value is set. This value is derived from the Window Width present in the image when the operator asked for the Screen Save.

**3.4.7.2 Modality LUT module**

This section specifies the Attributes that describe the Modality LUT.

**TABLE 3.4-9  
MODALITY LUT MODULE ATTRIBUTES**

Attribute Name	Tag	Type	Attribute Description
Rescale Intercept	(0028,1052)	1C	0
Rescale Slope	(0028,1053)	1C	1
Rescale Type	(0028,1054)	1C	US

**3.4.8 General Modules**

The SOP Common Module is mandatory for all DICOM IODs.

**3.4.8.1 SOP Common Module**

This section defines the Attributes which are required for proper functioning and identification of the associated SOP Instances. They do not specify any semantics about the Real-World Object represented by the IOD.

**TABLE 3.4-10  
SOP COMMON MODULE ATTRIBUTES**

Attribute Name	Tag	Type	Attribute Description
SOP Class UID	(0008,0016)	1	1.2.840.10008.5.1.4.7
SOP Instance UID	(0008,0018)	1	Generated from GE Based UID; <station configuration> and timestamp.
Specific Character Set	(0008,0005)	1C	ISO_IR 100

**3.4.9 SC Modules**

This Section describes SC Equipment, and Image Modules. These Modules contain Attributes that are specific to SC Image IOD.

**3.4.9.1 SC Equipment Module**

This Module describes equipment used to convert images into a DICOM format.

**TABLE 3.4-11  
SC IMAGE EQUIPMENT MODULE ATTRIBUTES**

Attribute Name	Tag	Type	Attribute Description
Conversion Type	(0008,0064)	1	WSD
Modality	(0008,0060)	3	Original
Secondary Capture Device ID	(0018,1010)	3	real UNIX station host name
Secondary Capture Device Manufacturer	(0018,1016)	3	GE MEDICAL SYSTEMS
Secondary Capture Device Manufacturer's Model Name	(0018,1018)	3	A.W.4.2
Secondary Capture Device Software Version	(0018,1019)	3	build: <date and time of software creation>

**3.4.9.2 SC Image Module**

The table in this Section contains IOD Attributes that describe SC images.

**TABLE 3.4-12  
SC IMAGE MODULE ATTRIBUTES**

<b>Attribute Name</b>	<b>Tag</b>	<b>Type</b>	<b>Attribute Description</b>
Date of Secondary Capture	(0018,1012)	3	Creation date of the Secondary Capture
Time of Secondary Capture	(0018,1014)	3	Creation time of the Secondary Capture

**3.5 PRIVATE DATA DICTIONARY**

No private elements are being used for this IOD.

## 4. BASIC TEXT SR INFORMATION OBJECT IMPLEMENTATION

### 4.1 INTRODUCTION

This section specifies the use of the DICOM Basic Text SR IOD to represent the information included in Basic text SR produced by this implementation. Corresponding attributes are conveyed using the module construct. The contents of this section are:

4.2 BASIC TEXT SR ENTITY-RELATIONSHIP MODEL

4.3 BASIC TEXT SR-IOD MODULE TABLE

4.4 BASIC TEXT SR-INFORMATION MODULE DEFINITIONS

4.6 EXAM NOTE - PRESENTATION TEMPLATE

**Note:** The Basic Text DICOM SR produced by this implementation is also named: “Exam Note”

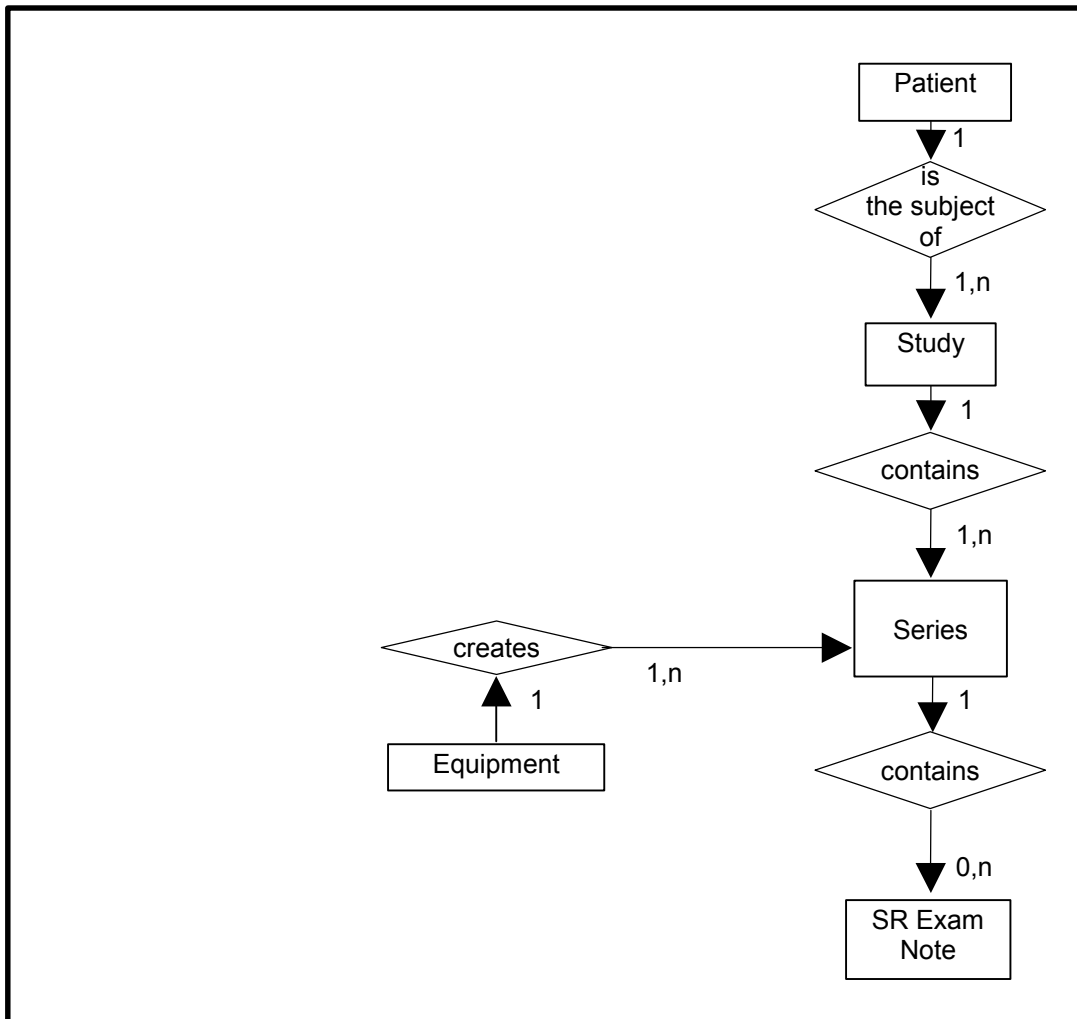
### 4.2 BASIC TEXT SR ENTITY-RELATIONSHIP MODEL

The Entity-Relationship diagram for the Basic Text SR interoperability schema is shown in **Illustration 4.2.1**. In this figure, the following diagrammatic convention is established to represent the information organization:

- each entity is represented by a rectangular box
- each relationship is represented by a diamond shaped box.
- the fact that a relationship exists between two entities is depicted by lines connecting the corresponding entity boxes to the relationship boxes.

The relationships are fully defined with the maximum number of possible entities in the relationship shown. In other words, the relationship between Series and Image can have up to  $n$  Images per Series, but the Patient to Study relationship has 1 Study for each Patient (a Patient can have more than one Study on the system, however each Study will contain all of the information pertaining to that Patient).

ILLUSTRATION 4.2-1  
BASIC TEXT SR ENTITY RELATIONSHIP DIAGRAM



4.2.1 ENTITY DESCRIPTIONS

Please refer to DICOM Standard Part 3 (Information Object Definitions) for a description of each of the entities contained within the Basic Text SR Information Object.

4.2.2 Seno Advantage Mapping of DICOM entities

TABLE 4.2-1  
MAPPING OF DICOM ENTITIES TO SENO ADVANTAGE ENTITIES

DICOM	Seno Advantage Entity
Patient	Patient
Study	Exam
Series	Series
SR Document	SR Document

4.3 BASIC TEXT SR-IOD MODULE TABLE

Within an entity of the DICOM v3.0 BASIC TEXT SR IOD, attributes are grouped into related set of attributes. A set of related attributes is termed a module. A module facilitates the understanding of the semantics concerning the attributes and how the attributes are related with each other. A module grouping does not infer any encoding of information into datasets.

Table 4.3.1 identifies the defined modules within the entities which comprise the DICOM v3.0 Basic Text SR IOD. Modules are identified by Module Name.

See DICOM v3.0 Part 3 for a complete definition of the entities, modules, and attributes.

**TABLE 4.3.1  
BASIC TEXT SR IOD MODULES**

<b>Entity Name</b>	<b>Module Name</b>	<b>Reference</b>
Patient	Patient	4.4.1.1
Study	General Study	4.4.2.1
Series	SR Document Series	4.4.3.1
Equipment	General Equipment	4.4.3.2
Document	SR Document General	4.4.4.1
	SR Document Content	4.4.4.2
	SOP Common	4.4.5.1

#### **4.4 BASIC TEXT SR-INFORMATION MODULE DEFINITIONS**

Please refer to DICOM v3.0 Standard Part 3 (Information Object Definitions) for a description of each of the entities and modules contained within the Basic Text SR Information Object.

The following modules are included to convey Enumerated Values, Defined Terms, and Optional Attributes supported. Type 1 & Type 2 Attributes are also included for completeness and to define what values they may take and where these values are obtained from. It should be noted that they are the same ones as defined in the DICOM v3.0 Standard Part 3 (Information Object Definitions).



**4.4.1 Common Patient Entity Modules**

**4.4.1.1 Patient Module**

This section specifies the Attributes of the Patient that describe and identify the Patient who is the subject of a diagnostic Study. This Module contains Attributes of the patient that are needed for diagnostic interpretation of the Image and are common for all studies performed on the patient.

**TABLE 4.4-1  
PATIENT MODULE ATTRIBUTES**

<b>Attribute Name</b>	<b>Tag</b>	<b>Type</b>	<b>Attribute Description</b>
Patient's Name	(0010,0010)	2	Copy of the patient name of the more recent exam if present, empty string otherwise
Patient ID	(0010,0020)	2	Copy of the patient ID of the more recent exam if present, empty string otherwise
Patient's Birth Date	(0010,0030)	2	Copy of the patient birth date of the more recent exam if present, empty string otherwise
Patient's Sex	(0010,0040)	2	Copy of the patient sex of the more recent exam if present, empty string otherwise

**4.4.2 Common Study Entity Modules**

The following Study IE Modules are common to all Composite Image IODs which reference the Study IE. These Module contain Attributes of the patient and study that are needed for diagnostic interpretation of the image.

**4.4.2.1 General Study Module**

This section specifies the Attributes which describe and identify the Study performed upon the Patient.

**TABLE 4.4-2  
GENERAL STUDY MODULE ATTRIBUTES**

<b>Attribute Name</b>	<b>Tag</b>	<b>Type</b>	<b>Notes</b>
Study Instance UID	(0020,000D)	1	Copy of the study instance UID of the more recent exam
Study Date	(0008,0020)	2	Copy of the study date of the more recent exam if present, empty string otherwise
Study Time	(0008,0030)	2	Copy of the study time of the more recent exam if present, empty string otherwise
Accession Number	(0008,0050)	2	Copy of the accession number of the more recent exam if present, empty string otherwise
Referring Physician's Name	(0008,0090)	2	Copy of the physician name of the more recent exam if present, empty string otherwise
Study Description	(0008,1030)	3	Copy of the study description of the more recent exam if present, not defined otherwise
Study ID	(0020,0010)	2	Copy of the study ID of the more recent exam if present, empty string otherwise

**4.4.3 SR Document Series entity Modules**

The following SR Document Series IE Modules are common to all Composite Image IODs that reference the SR Document Series IE.

**4.4.3.1 SR Document Series Module**

This section specifies the attributes that identify and describe general information about the SR Document Series within a Study.

**TABLE 4.4-2  
SR DOCUMENT SERIES MODULE ATTRIBUTES**

Attribute Name	Tag	Type	Attribute Description
Modality	(0008,0060)	1	SR
Series Instance UID	(0020, 000e)	1	1.2.840.113619.2.198
Series Number	(0020, 0011)	1	Generated
Series Description	(0008, 103E)	3	Free text filled by the end user
Referenced Study Component Sequence	(0008, 1111)	2	Empty

**4.4.3.2 General Equipment Module**

This section specifies the Attributes which identify and describe the piece of equipment which produced a Series of Images.

**TABLE 4.4-3  
GENERAL EQUIPMENT MODULE ATTRIBUTES**

Attribute Name	Tag	Type	Attribute Description
Manufacturer	(0008,0070)	2	GE MEDICAL SYSTEMS
Station Name	(0008,1010)	3	Not present
Manufacturer's Model Name	(0008,1090)	3	SA2.0

**4.4.4 SR Document Entity Modules**

The following SR document Modules are common to all Composite Image IODs which reference the Image IE.

**4.4.4.1 SR Document General Module**

This section specifies the Attributes which identify and describe the SR Document.

**TABLE 4.4-4  
SR DOCUMENT GENERAL MODULE ATTRIBUTES**

Attribute Name	Tag	Type	Attribute Description
Instance Number	(0020, 0013)	1	1
Completion flag	(0040, A491)	1	COMPLETE
Verification flag	(0040, A493)	1	VERIFIED
Content Date	(0008, 0023)	1	Date of creation
Content Time	(0008, 0033)	1	Time of creation

Verifying Observer Sequence	(0040, A073)	1C	
> Verifying Observer Name	(0040, A075)	1	Name of the user that currently is logged on the station
> Verifying Observer Identification Code Sequence	(0040, A088)	2	Empty
> Verifying Organization	(0040, A027)	1	Same as Institution Name (0008,0080) of General Equipment Module
> Verifying Date Time	(0040, A030)	1	Date and time of creation
Performed Procedure Code Sequence	(0040, A372)	2	Empty

**4.4.4.2 SR Document Content Module**

This section specifies the attributes that identify and describe the SR content

**TABLE 4.4-5  
SR DOCUMENT CONTENT MODULE ATTRIBUTES**

Attribute Name	Tag	Type	Attribute Description
Content Template Sequence	(0040, A504)	1C	
> Template identifier	(0040, DB00)	1	SA2.0 MINIREPORT
> Mapping Resource	(0008, 0105)	1	PRIVATE

**4.4.5 General Modules**

The SOP Common Module is mandatory for all DICOM IODs.

**4.4.5.1 SOP Common Module**

This section defines the Attributes which are required for proper functioning and identification of the associated SOP Instances. They do not specify any semantics about the Real-World Object represented by the IOD.

**TABLE 4.4-6  
SOP COMMON MODULE ATTRIBUTES**

Attribute Name	Tag	Type	Attribute Description
SOP Class UID	(0008,0016)	1	BASIC TEXT SR
SOP Instance UID	(0008,0018)	1	Generated from GE Based UID; <station configuration> and timestamp.
Specific Character Set	(0008,0005)	1C	ISO_IR 100

**4.5 PRIVATE DATA DICTIONARY**

No private elements are being used for this IOD.

**4.6 EXAM NOTE - PRESENTATION TEMPLATE**

This template describes how the SR Document Content Module of the Basic Text SR Information Object Definition is constrained for the purpose of implementing the Exam Note.

**4.6.1 TID SA2.0 MINIREPORT: Exam Note Presentation**

<i>NL</i>	<i>Rel with Parent</i>	<i>VT</i>	<i>Concept Name</i>	<i>VM</i>	<i>Req Type</i>	<i>Condition</i>	<i>Value Set Constraint</i>

	<i>NL</i>	<i>Rel with Parent</i>	<i>VT</i>	<i>Concept Name</i>	<i>VM</i>	<i>Req Type</i>	<i>Condition</i>	<i>Value Set Constraint</i>
1			CONTAINER	EV (SA2-MR-0001, 99GEMS, "Mini Report Presentation")	1	M		Document title
2>		HAS CONCEPT MOD	INCLUDE	DTID (1204) "Language of Content Item and Descendants"	1	M		
3>		HAS OBS CONTEXT	INCLUDE	DTID (1002) "Observer Context"	1	M		
4>		CONTAINS	TEXT	EV (SA2-MR-0002, 99GEMS, "Findings, diagnostic")	1	M		

**4.6.2 TID 1002 Observer Context**

	<i>NL</i>	<i>Rel with Parent</i>	<i>VT</i>	<i>Concept Name</i>	<i>VM</i>	<i>Req Type</i>	<i>Condition</i>	<i>Value Set Constraint</i>
1		HAS OBS CONTEXT	CODE	EV (121005,DCM, "Observer Type")	1	MC		"Person"
2		HAS OBS CONTEXT	INCLUDE	DTID (1003) Person observer	1	MC		

**4.6.3 TID 1003 Person observer identifying attributes**

	<i>NL</i>	<i>Rel with Parent</i>	<i>VT</i>	<i>Concept Name</i>	<i>VM</i>	<i>Req Type</i>	<i>Condition</i>	<i>Value Set Constraint</i>
1			PNAME	EV (121008,DCM, "Person Observer Name")	1	M		Name of the user that currently is logged on the station
2			TEXT	EV (121009,DCM, "Person Observer's Organization Name")	1	U		"no name"

**4.6.4 TID 1204 Language of Content Item and descendants**

	<i>NL</i>	<i>Rel with Parent</i>	<i>VT</i>	<i>Concept Name</i>	<i>VM</i>	<i>Req Type</i>	<i>Condition</i>	<i>Value Set Constraint</i>
1			CODE	(121049,DCM,"Language of Content Item and Descendants")	1	M		"English"

**4.7 PRIVATE CODED ENTRIES**

The private coded entries that are required for implementing the Exam Note DICOM SR object are listed below (these are referred into the Exam Note Presentation Template).

<i>Coded Entries</i>		
<b>Coding Scheme Designator</b> <b>(0008,0102)</b>	<b>Code Value</b> <b>(0008,0100)</b>	<b>Code Meaning</b> <b>(0008,0104)</b>
99GEMS	SA2-MR-0001	Mini Report Presentation
99GEMS	SA2-MR-0002	Findings, diagnostic

## **5. DIGITAL MAMMOGRAPHY XRAY INFORMATION OBJET IMPLEMENTATION**

Seno Advantage Application supports DICOM MG images as input created by the Senographe DS Acquisition System (See DCS manual 5160883-100\_rev1).