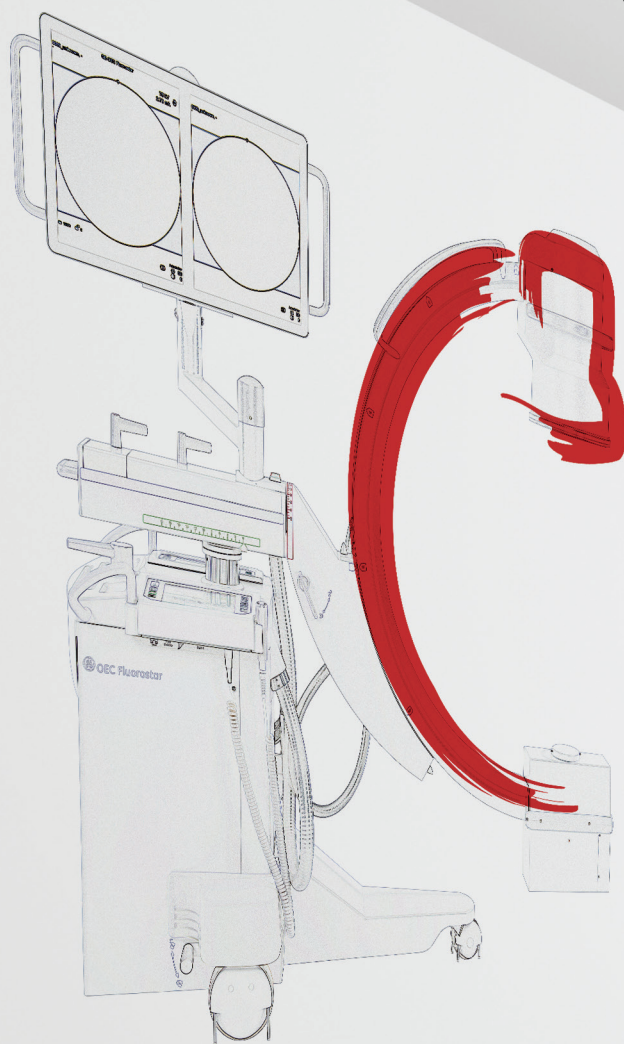


GE Healthcare

# Art in agility

GE OEC Fluorostar Compact\*  
GE OEC Fluorostar Series\*



Experience the beauty  
of maneuverability in imaging





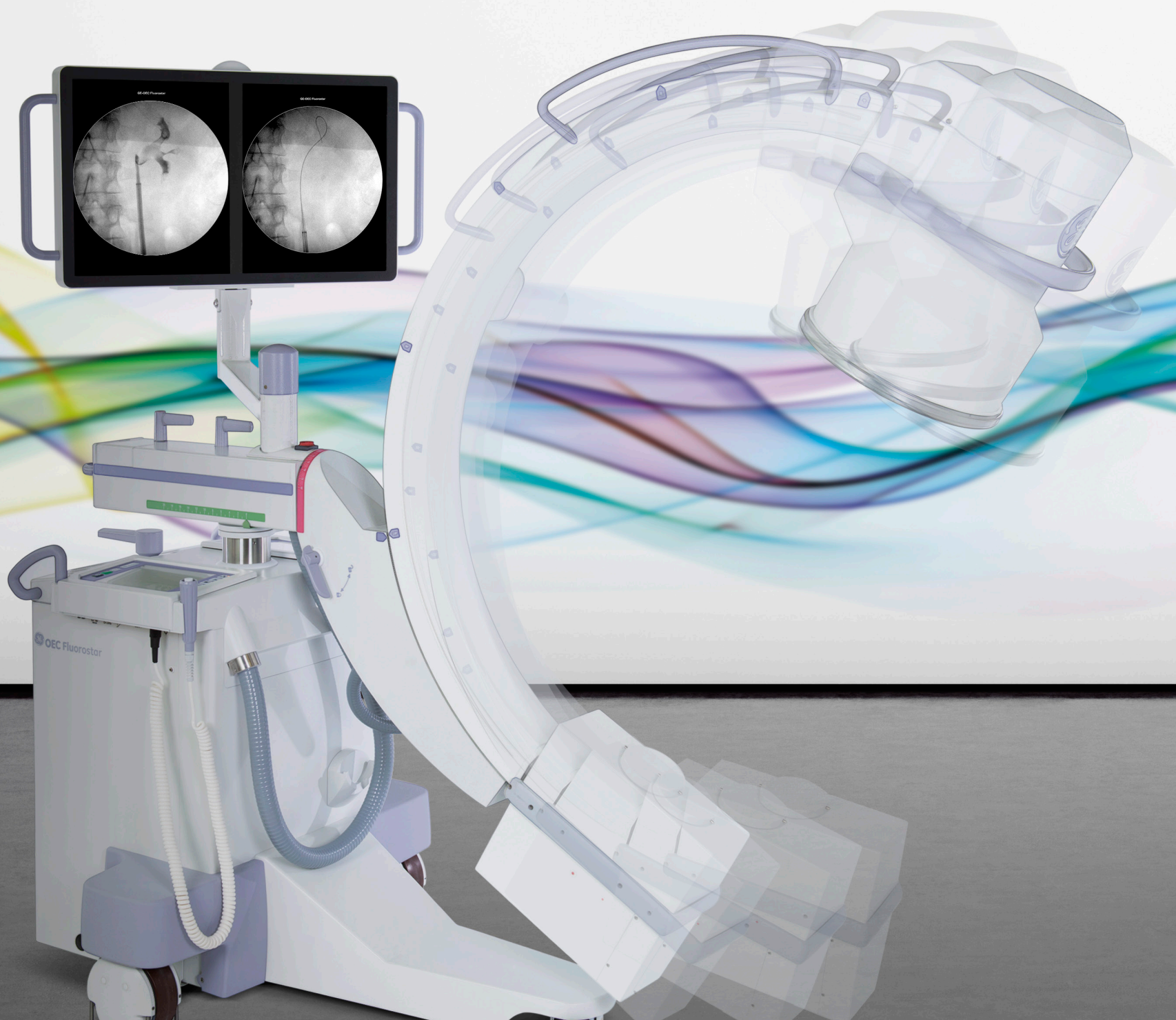
# Stunning Movement

The improved OEC Fluorostar is the most lightweight and agile full-sized OEC C-arm ever developed. But don't underestimate the power and versatility of this truly compact C-arm. Providing beautiful image quality in applications from basic orthopedic to vascular, the OEC Fluorostar can be moved and positioned quickly in most any type of procedure room. With a C-arm this nimble offering a variety of quality features and functions, the new definition of art in agility is OEC Fluorostar.

**All-in-one, lightweight system with a small footprint.**

**Versatile applications including Vascular capabilities.**

**Superb image quality with point and shoot operation.**



\* The GE OEC Fluorostar Compact comes with one or two monitors mounted on the c-arm. The monitor cart is optional. The OEC Fluorostar Series requires a monitor cart as no monitor is mounted on the c-arm. The GE OEC Fluorostar Compact and GE OEC Fluorostar Series will be referred as "OEC Fluorostar" throughout this document unless otherwise stated.



# Your Canvas awaits

The OEC Fluorostar provides superb high-quality imaging that helps in performing complicated procedures. The combination of high resolution CCD Camera and 1k x 1k image processing create an optimal image for most any procedure. The single or dual high-luminance 19" flat-screen, ultra-thin monitors provide the staff with the clear crisp images that can enable outstanding patient care.



## Move to True Clinical Versatility

The OEC Fluorostar has been designed to meet your expectations in urology, endoscopy, orthopedics, vascular and electrophysiology. It is also suitable for neurological applications, applications in intensive care, and in accident & emergency procedures.



# An extraordinary portfolio

**The OEC Fluorostar's true 1k x 1k image processing offers excellent image quality in all modes.**

This compact C-arm can address a broad range of clinical applications across a diverse set of procedural settings. Whether you are facing vascular emergencies in the ER or need to identify a tiny fracture in a Physician office, you can expect to produce a high quality image to aid in patient care with the OEC.



## ICU / CCU

Catheter placement and management is an effective use of the OEC Fluorostar system. Its compact size and affordability makes this system a valuable tool for ICU/CCU departments.

## Emergency room

The OEC Fluorostar can give you the ability to image right in your emergency room. Great in aiding in quick diagnoses when time is of the essence.

## Surgery centers

When there are space constraints, but basic imaging is desired, the OEC Fluorostar can be the right solution.

## Urology

Imaging for cystoscopy, stone retrieval, urodynamics and other urology procedures can be simple and accurate with the OEC Fluorostar. The urologist can check the injection of contrast agent material from the kidney with the Fluorostar's Cine option.

## Endoscopy lab

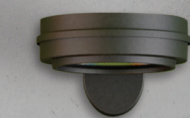
During procedures like bronchoscopy, spine surgeries or ERCP, the OEC Fluorostar can track the progression of the endoscope.

## Physician offices

Managing large patient volumes can slow down the efficiency of a successful office practice. The compact point-and shoot feature helps for quick diagnosis and patient workflow management.



# An extraordinary portfolio



## COMPACT

Smallest Fluorostar with one monitor on the mainframe suited for small rooms.



## COMPACT²

Fluorostar with dual monitors on the mainframe means easy set up for rooms.



## SERIES

Fluorostar base that connects with the lightweight dual monitor cart.



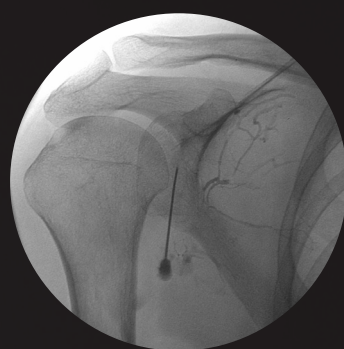
## COMPACT PLUS

The smallest Fluorostar plus lightweight monitor cart offers three monitors in space-constrained rooms.



## COMPACT² PLUS

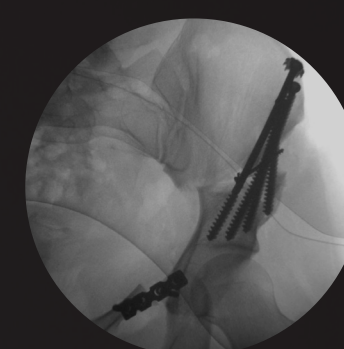
Fluorostar with four monitors - dual monitors on the mainframe and two additional on the lightweight cart.



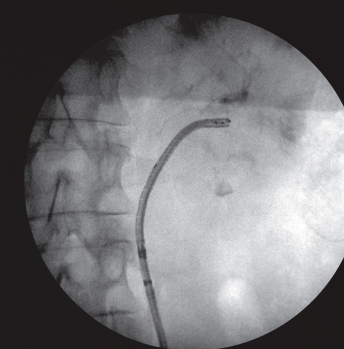
Pain Management



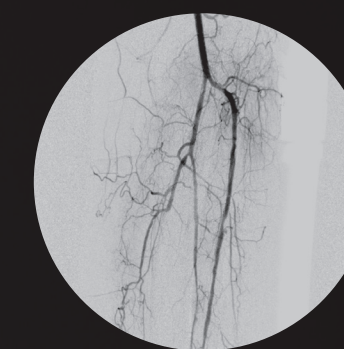
General Surgery/  
Endoscopy



Trauma / Orthopedic



Urology



Vascular

The OEC Fluorostar is an easy plug and play design offering multiple configurations to fit the access needs of most any procedure room. Choose a Compact base model with a 1 or 2 Hi-definition monitors built in, or the Series model that connects to our lightweight monitor cart.





# Color your Workflow

**Color coding for intuitive operation**  
The OEC Fluorostar features color-coded brake handles to match your C-arm movements.

The OEC Fluorostar is operated by a simple dualside touchscreen, offering user accessibility from either the left or right side of the C-arm and eliminating the cumbersome keyboard and mouse. Positioning is also made easy with color-coded brake controls.

**Quick orientation! Commands feel natural at your fingertips.**

One-level menu operations allow users to quickly move through menus with simple on-screen touches. Move through your workflow easily using the dual touchscreen icons for:



- Patient information
- Image adjustment options
- Live image tools
- Post image processing
- DICOM

See how simple your workflow can become when images can be rotated, negated, collimated and magnified right from the touchscreen. Getting the right image in the first shot can help reduce procedure time and dose.



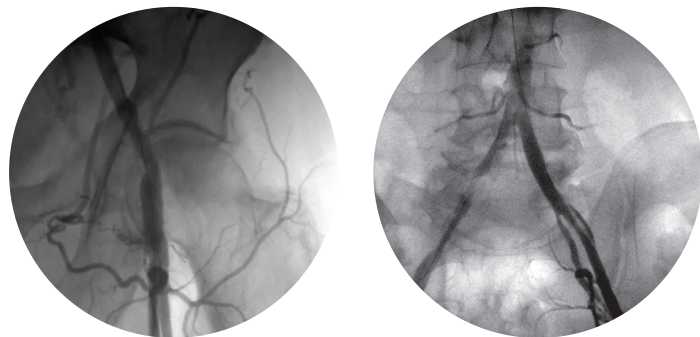
**Composed connections**

Store more. Transfer easily. The OEC Fluorostar's connectivity functions can help increase workflow efficiencies in most clinical applications.

- Share exams instantly, thanks to its Wifi connectivity
- Integrated DICOM with MPPS
- Up to 15,000 images and up to 86,000 cine run frames can be store on the hard drive
- USB Port for plug-and-play image storage and transfer to review on a station or a personal computer. Save in bmp and jpeg formats.
- Export images to USB or CD/DVD in DICOM (DCM), JPEG (JPG) or Bitmap (BMP).



# Extended clinical capabilities at low dose



Settings are automatically adapted to provide high quality imaging at optimal dose levels with the OEC Fluorostar. Combine this optimisation with accurate, easy positioning and you can create the right image at the right dose without the need for retakes.

- The OEC Fluorostar helps align anatomy with precision by using laser aimers (optional) from both image intensifier and tube-side.
- Preview Collimation helps to reduce overall patient and staff dose through the ability to preview shutter/iris collimator positioning without an exposure.
- To further reduce dose, the system allows users to easily select pre-defined fluoro modes - such as the pediatric option, half dose or pulsed - for imaging anatomy at optimal mA and kV levels.
- The use of the Pulsed Mode - with between 1 to 8 pulses per second - may result in a decreased dose to patient and staff. If needed, users can also select the High Performance Pulsed Mode, providing 1 to 8 pps at maximum intensity for dense anatomy.

## Grab cineruns without a subtraction

The OEC Fluorostar Cine module provides acquisition frame rates for cine runs from 1 up to 25 frames per second, providing high definition dynamic scene review for General and Vascular procedures. Thanks to a workflow-friendly touchscreen interface with advanced post-processing capability, you can save up to 540 individual frames from a single Cine acquisition.

## Perform Peripheral Vascular applications

The OEC Fluorostar Vascular module supports subtraction, peak-opacification and road-mapping functionality for peripheral vascular applications. With the smart footswitch toggle mode, the surgeon has control and can easily switch between Fluoro, Cine, Subtraction and Roadmapping modes.

## Enhanced post-processing possibilities

The proven dual-side touchscreen interface gives the user all postprocessing functions at a glance. The cinerun can be trimmed, adjusted on window and level, and reviewed from slow motion to fast speed all from the touchscreen pad.

## Pediatric surgery

To support your effort to reduce dose exposures to children, the OEC Fluorostar provides a pediatric option, consisting of a removable anti-scatter grid and an additional filter.







## Why Choose GE OEC?

GE Healthcare continues to design OEC mobile c-arms to help surgeons and staff deliver high quality treatment to patients and improve productivity in the Operating Room. Superb image quality, unique design and workflow-friendly interface may be why there are more OEC c-arms in the world than any other brand.

**gehealthcare.com**

GE Healthcare provides transformational medical technologies and services to meet the demand for increased access, enhanced quality and more affordable healthcare around the world. GE works on things that matter - great people and technologies taking on tough challenges. From medical imaging, software & IT, patient monitoring and diagnostics to drug discovery, biopharmaceutical manufacturing technologies and performance improvement solutions, GE Healthcare helps medical professionals deliver great healthcare to their patients.

GE Healthcare  
Chalfont St.Giles,  
Buckinghamshire,  
UK

GE Healthcare, Europe  
Headquarters Buc, France  
+33 800 90 87 19

GE Healthcare, Middle East and Africa  
Istanbul, Turkey  
+ 90 212 36 62 900

GE Healthcare, North America  
Milwaukee, USA  
+ 1 866 281 7545

GE Healthcare, Latin America  
Sao Paulo, Brazil  
+ 55 800 122 345

GE Healthcare, Asia Pacific  
Tokyo, Japan  
+ 81 42 585 5111

GE Healthcare, ASEAN  
Singapore  
+65 6291 8528

GE Healthcare, China  
Beijing, China  
+ 86 800 810 8188

GE Healthcare, India  
Bangalore, India  
+91 800 209 9003

## GE imagination at work

Product may not be available in all countries and regions.

OEC Fluorostar is not available for sale or distribution in the United States.

General Electric Company reserves the right to make changes in specifications and features shown herein, or discontinue the product described at any time without notice or obligation. Contact your GE Representative for the most current information.

Data subject to change

GE, the GE Monogram, imagination at work and OEC Fluorostar are trademarks of General Electric Company.

Reproduction in any form is forbidden without prior written permission from GE.

GE OEC Medical Systems, Inc., doing business as GE Healthcare.

©2016 General Electric Company – All rights reserved. JB36829FR