


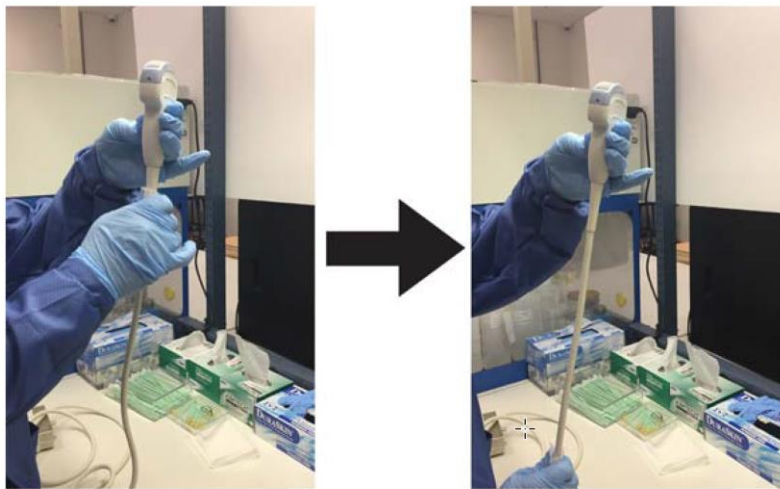


Ultrasound scanners – Long term storage guidelines

1. Disconnect the Probes from the Ultrasound scanner. Gently remove all coupling gel from the probe by wiping with soft, lint-free cloth. Take adequate caution not to accidentally drop and damage the probe while cleaning.

 CAUTION	DO NOT use abrasive paper products when cleaning or wiping a GE Ultrasound probe. The use of abrasive wipes can damage the soft lens (acoustic window).
---	---

2. If applicable, please disinfect the probes.
Wipe the probe with one of the wipes listed in Probe Care Card from the lens, past the strain relief. Wipe the cable with a lint-free cloth dampened with potable water to remove chemical residue. Dispose of the cloth, wipe and gloves in the clinical trash.



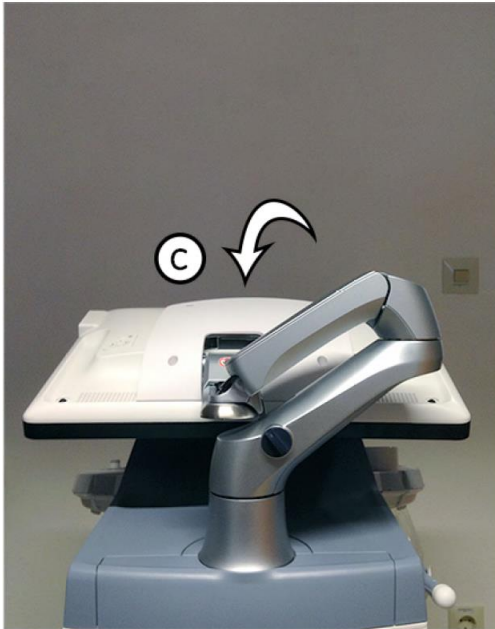
Cleaning the Probe Cable

Refer below websites for more information on disinfection

<https://cleaning.gehealthcare.com/>

<https://www.gehealthcare.com/products/ultrasound/ultrasound-transducers>

3. Store the probe in the original probe box to prevent damage.
DO NOT keep the probes connected to the Ultrasound system during long term storage to prevent accidental damage. Residual gel on the probe is perceived as food by rodents such as rats which damage the probe surface by bite marks.
4. Clean the probe holders and GEL holder with a moist cloth to remove residual gel.
5. Remove any unused Gel bottle from the Ultrasound scanner and store it separately.
6. Disconnect the power cable of the Ultrasound scanner from the UPS/ power socket, wrap the power cable it and place near the Ultrasound scanner. Remove all peripheral device connections, such as printers, USB media, external monitors and network cable. Take a picture of the cable connections before you remove so that it can be used to guide while connecting later.
7. Place the LCD monitor in face down position



If your system has articulating monitor arm, please lock the arm to prevent it from moving.

8. Some portable Ultrasound scanners have removable battery. It is advised to remove the battery and store it separately.



CAUTION

Ensure pest control is done in the room where the Ultrasound scanner is stored to prevent damage from rodents such as rats and cockroaches. Edible items should not be allowed in the Ultrasound room.
Keep the Ultrasound room free from dust.

9. Create a list of all probes , peripheral cable connections etc
10. Lock the wheels of the Ultrasound scanner
11. You can place a cotton cloth cover on the Ultrasound scanner to prevent dust from accumulating on the surfaces. Position the system near a cool place and avoid direct sunlight. DO NOT use a plastic cover as it tends to hold moisture inside.
If you have sachets of silica gel, you can place 1- 2 sachets on the Ultrasound scanner to absorb excess moisture.

Storage temperature: -10 to 50 deg C

Storage Humidity: 10 to 90% rH (non condensing)

Please exercise the following caution while **Powering ON** the Ultrasound scanner after a long duration of storage.

Operating temperature: 10 to 30 deg C

Operating Humidity: 30 to 80% rH (non condensing)

If the Ultrasound scanner was stored in warm conditions, DO NOT turn ON its power until it has had a chance to acclimate to its operating environment. In general , please allow 2 hours for the system to adjust to its operating environment , for e.g. after switching on AC.

In situations where air is relatively moist - possibly near sea or lakes or rivers or after rain, if temperature drops suddenly Relative Humidity can go to 100% and condensation can occur.

For portable scanners with removable battery, Inspect the battery before connecting it back. If the battery has leaked, emitting an odour, or is deformed/bulged, stop using it.

When charging the battery for the first time after long-term storage, recover the battery pack to original performance through repeating several cycles of full charging and discharging.

After the system has successfully booted, connect and verify the operation of each probe. Shut down the system and connect the peripheral cables. Switch on the ultrasound scanner and verify functionality of peripheral devices.

Clean / disinfect the probe before patient use.