

Technical Publications

Direction EP250409
Revision 19

EchoPAC PC version 3 **CONFORMANCE STATEMENT** **for DICOM**

(From version 3.5.0/3.6.0)

Copyright© 2008 By General Electric Co.

Do not duplicate



GE Ultrasound

THIS PAGE LEFT INTENTIONALLY BLANK

TABLE OF CONTENTS

| | |
|--|-----------|
| 1. INTRODUCTION | 1 |
| 1.1 OVERVIEW..... | 1 |
| 1.2 OVERALL DICOM CONFORMANCE STATEMENT DOCUMENT STRUCTURE..... | 2 |
| 1.3 INTENDED AUDIENCE | 3 |
| 1.4 SCOPE AND FIELD OF APPLICATION | 3 |
| 1.5 IMPORTANT REMARKS | 4 |
| 1.6 REFERENCES..... | 4 |
| 1.7 DEFINITIONS | 5 |
| 1.8 SYMBOLS AND ABBREVIATIONS | 5 |
| 2. NETWORK CONFORMANCE STATEMENT | 6 |
| 2.1 INTRODUCTION..... | 6 |
| 2.2 IMPLEMENTATION MODEL | 6 |
| 2.2.1 Application Data Flow Diagram | 6 |
| 2.2.2 Functional Definition of AE's..... | 8 |
| 2.2.3 Sequencing of Real-World Activities..... | 8 |
| 2.3 AE SPECIFICATIONS | 8 |
| 2.3.1 EchoPAC PC AE Specification..... | 8 |
| 2.4 COMMUNICATION PROFILES..... | 17 |
| 2.4.1 Supported Communication Stacks (PS 3.8, PS 3.9)..... | 17 |
| 2.4.2 TCP/IP Stack..... | 17 |
| 2.5 EXTENSIONS / SPECIALIZATIONS / PRIVATIZATIONS | 18 |
| 2.6 CONFIGURATION..... | 18 |
| 2.6.1 AE Title/Presentation Address Mapping..... | 18 |
| 2.6.2 Configurable Parameters..... | 18 |
| 2.7 SUPPORT OF EXTENDED CHARACTER SETS | 19 |
| 2.8 CODES AND CONTROLLED TERMINOLOGY | 19 |
| 2.8.1 Fixed Coded Terminology | 19 |
| 2.9 SECURITY PROFILES | 19 |

| | |
|--|-----------|
| 3. MEDIA STORAGE CONFORMANCE STATEMENT | 20 |
| 3.1 INTRODUCTION..... | 20 |
| 3.2 IMPLEMENTATION MODEL | 20 |
| 3.2.1 Application Data Flow Diagram | 20 |
| 3.2.2 Functional Definition of AE's..... | 20 |
| 3.2.3 Sequencing Requirements | 21 |
| 3.2.4 File Meta Information Options (See PS3.10)..... | 21 |
| 3.3 AE SPECIFICATIONS | 21 |
| 3.3.1 EchoPAC PC AE Specification..... | 21 |
| 3.4 AUGMENTED AND PRIVATE APPLICATION PROFILES | 25 |
| 3.5 EXTENSIONS, SPECIALIZATIONS, PRIVATIZATIONS OF SOP CLASSES AND TRANSFER SYNTAXES..... | 25 |
| 3.6 CONFIGURATION..... | 25 |
| 3.7 SUPPORT OF EXTENDED CHARACTER SETS | 26 |
| 4. ULTRASOUND (US) INFORMATION OBJECT IMPLEMENTATION..... | 27 |
| 4.1 INTRODUCTION..... | 27 |
| 4.2 US IOD IMPLEMENTATION..... | 27 |
| 4.3 US ENTITY-RELATIONSHIP MODEL | 27 |
| 4.3.1 Entity Descriptions..... | 28 |
| 4.3.2 EchoPAC PC Mapping of DICOM Entities..... | 28 |
| 4.4 IOD MODULE TABLE..... | 29 |
| 4.5 INFORMATION MODULE DEFINITIONS..... | 29 |
| 4.5.1 Common Patient Entity Modules | 30 |
| 4.5.2 Common Study Entity Modules | 30 |
| 4.5.3 Common Series Entity Modules..... | 32 |
| 4.5.4 Common Equipment Entity Modules | 33 |
| 4.5.5 Common Image Entity Modules | 33 |
| 4.5.6 General Modules..... | 37 |
| 4.5.7 US Modules | 37 |
| 5. ULTRASOUND MULTIFRAME (US MF) INFORMATION OBJECT IMPLEMENTATION | 43 |
| 5.1 INTRODUCTION..... | 43 |
| 5.2 US MF IOD IMPLEMENTATION..... | 43 |
| 5.3 US MF ENTITY-RELATIONSHIP MODEL | 43 |
| 5.3.1 Entity Descriptions..... | 44 |
| 5.3.2 EchoPAC PC Mapping of DICOM entities | 44 |

| | | |
|------------|--|-----------|
| 5.4 | IOD MODULE TABLE..... | 45 |
| 5.5 | INFORMATION MODULE DEFINITIONS..... | 45 |
| 5.5.1 | Common Image Modules..... | 46 |
| 6. | SC INFORMATION OBJECT IMPLEMENTATION..... | 47 |
| 6.1 | INTRODUCTION..... | 47 |
| 6.2 | SC IOD IMPLEMENTATION..... | 47 |
| 6.3 | SC ENTITY-RELATIONSHIP MODEL..... | 47 |
| 6.3.1 | Entity Descriptions..... | 48 |
| 6.3.2 | EchoPAC PC Mapping of DICOM Entities..... | 48 |
| 6.4 | IOD MODULE TABLE..... | 49 |
| 6.5 | INFORMATION MODULE DEFINITIONS..... | 49 |
| 6.5.1 | SC Modules..... | 49 |
| 7. | BASIC DIRECTORY INFORMATION OBJECT IMPLEMENTATION..... | 51 |
| 7.1 | INTRODUCTION..... | 51 |
| 7.2 | BASIC DIRECTORY IOD IMPLEMENTATION..... | 51 |
| 7.3 | BASIC DIRECTORY ENTITY-RELATIONSHIP MODEL..... | 51 |
| 7.3.1 | EchoPAC PC Mapping of DICOM entities..... | 51 |
| 7.4 | IOD MODULE TABLE..... | 52 |
| 7.5 | INFORMATION MODULE DEFINITIONS..... | 53 |
| 7.5.1 | Common File Set identification Modules..... | 53 |
| 7.5.2 | Common Directory Information Modules..... | 53 |
| 7.5.3 | Definition of Specific Directory Records..... | 54 |
| 7.6 | PRIVATE DATA DICTIONARY..... | 60 |
| 8. | STORAGE COMMITMENT PUSH MODEL SOP CLASS DEFINITION..... | 61 |
| 8.1 | INTRODUCTION..... | 61 |
| 8.2 | STORAGE COMMITMENT PUSH MODEL SOP CLASS DEFINITION..... | 61 |
| 8.2.1 | IOD Description..... | 61 |
| 8.2.2 | DIMSE Service Group..... | 61 |
| 8.2.3 | Operations..... | 62 |
| 8.2.4 | Notifications..... | 63 |
| 9. | PRINT MANAGEMENT SOP CLASS DEFINITION..... | 66 |
| 9.1 | INTRODUCTION..... | 66 |

| | | |
|-------------|---|-----------|
| 9.2 | BASIC PRINT MANAGEMENT META SOP CLASSES..... | 66 |
| 9.2.1 | Basic Grayscale Print Management Meta SOP Class..... | 66 |
| 9.2.2 | Basic Color Print Management Meta SOP Class | 66 |
| 9.3 | PRINT MANAGEMENT SOP CLASS DEFINITIONS | 67 |
| 9.3.1 | Basic Film Session SOP Class | 67 |
| 9.3.2 | Basic Film Box SOP Class..... | 67 |
| 9.3.3 | Image Box SOP Class | 68 |
| 9.3.4 | Printer SOP Class..... | 69 |
| 9.4 | PRINT MANAGEMENT IODS | 69 |
| 9.4.1 | Film Session IOD Module | 70 |
| 9.4.2 | Basic Film Box IOD Module Table | 70 |
| 9.4.3 | Basic Image Box IOD Module Table..... | 70 |
| 9.4.4 | Printer IOD Module Table | 70 |
| 9.5 | INFORMATION MODULE DEFINITIONS..... | 70 |
| 9.5.1 | General Modules..... | 71 |
| 9.5.2 | Print Management Modules | 71 |
| 10. | STUDY ROOT QUERY/RETRIEVE INFORMATION MODEL DEFINITION | 77 |
| 10.1 | INTRODUCTION..... | 77 |
| 10.2 | STUDY ROOT INFORMATION MODEL DESCRIPTION | 77 |
| 10.3 | STUDY ROOT INFORMATION MODEL ENTITY-RELATIONSHIP MODEL..... | 77 |
| 10.3.1 | Entity Descriptions..... | 78 |
| 10.3.2 | EchoPAC PC Mapping of DICOM entities | 78 |
| 10.4 | INFORMATION MODEL KEYS..... | 78 |
| 10.4.1 | Supported Matching..... | 79 |
| 10.4.2 | Study Level | 79 |
| 10.4.3 | Series Level..... | 80 |
| 10.4.4 | Image Level..... | 81 |
| 10.5 | PRIVATE DATA DICTIONARY | 82 |

1. INTRODUCTION

1.1 OVERVIEW

This DICOM Conformance Statement is divided into Sections as described below:

Section 1 (Introduction), which describes the overall structure, intent, and references for this Conformance Statement

Section 2 (Network Conformance Statement), which specifies the GEHC equipment compliance to the DICOM requirements for the implementation of Networking features.

Section 3 (Media Storage Conformance Statement), which specifies the GEHC equipment compliance to the DICOM requirements for the implementation of Media Storage features.

Section 4 (Ultrasound Information Object Implementation), which specifies the GEHC equipment compliance to DICOM requirements for the implementation of an Ultrasound Medicine Information Object.

Section 5 (Ultrasound Multi-Frame Information Object Implementation), which specifies the GEHC equipment compliance to DICOM requirements for the implementation of an Ultrasound Multi-Frame Information.

Section 6 (SC Object Implementation), which specifies the GEHC equipment compliance to DICOM requirements for the implementation of a Secondary Capture Information Object.

Section 7 (Basic Directory Information Object Implementation), which specifies the GEHC equipment compliance to DICOM requirements for the implementation of a Basic Directory Information Object.

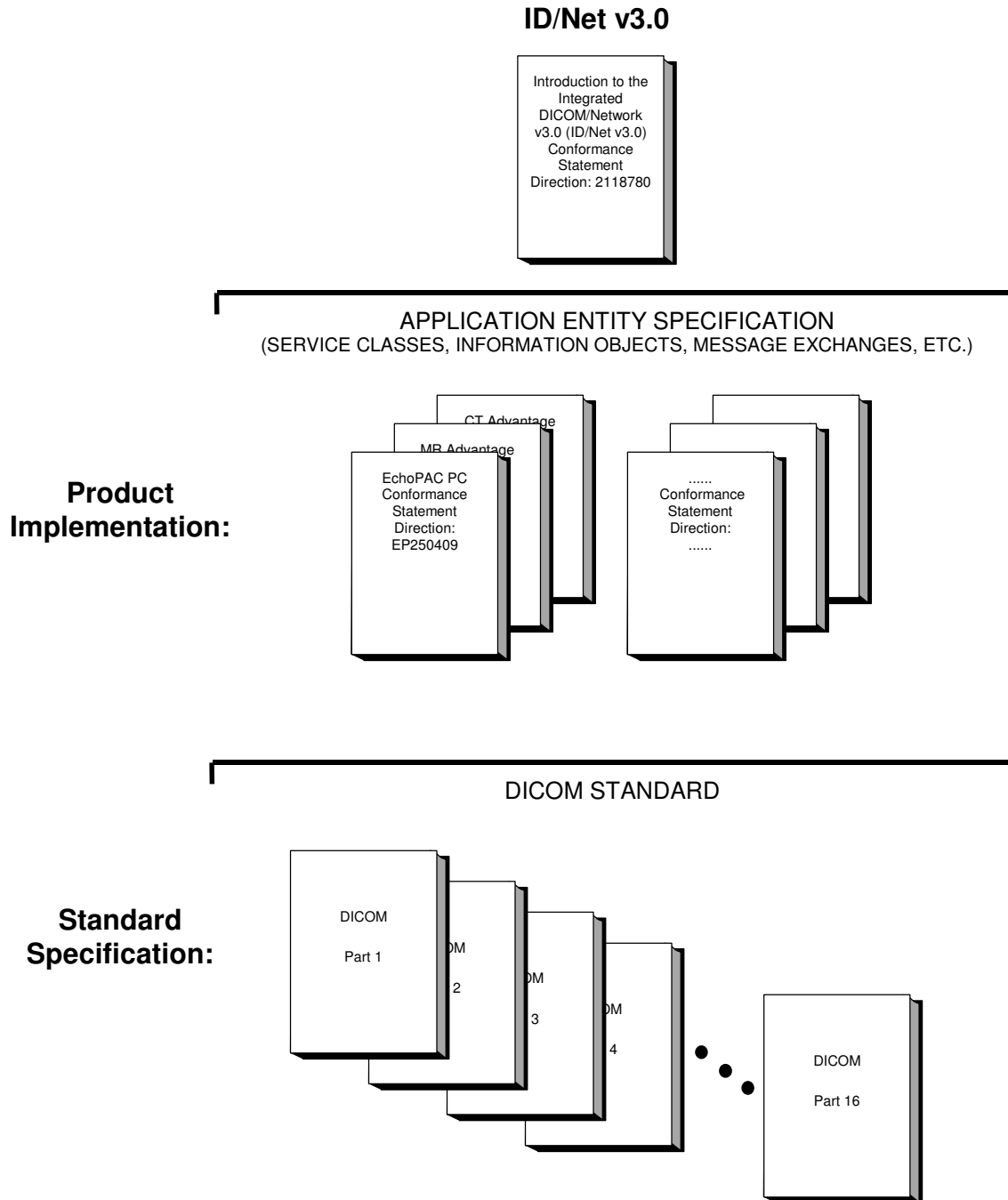
Section 8 (Storage Commitment Push Model SOP Class Definition), which specifies the GEHC equipment compliance to DICOM requirements for the implementation of the Storage Commitment Push Model Service.

Section 9 (Basic Print Meta SOP Class Information Object Implementation), which specifies the GEHC equipment compliance to DICOM requirements for the implementation of Basic Print Meta SOP Classes (Gray and Color).

Section 10 (Study Root Query/Retrieve Information Model), which specifies the GEHC equipment compliance to DICOM requirements for the Study Root Query/Retrieve Information Model.

1.2 OVERALL DICOM CONFORMANCE STATEMENT DOCUMENT STRUCTURE

The Documentation Structure of the GEHC Conformance Statements and their relationship with the DICOM Conformance Statements is shown in the Illustration below.



This document specifies the DICOM implementation. It is entitled:

EchoPAC PC version 3
Conformance Statement for DICOM
Direction EP250409

This DICOM Conformance Statement documents the DICOM Conformance Statement and Technical Specification required to inter-operate with the GEHC network interface. Introductory information, which is applicable to all GEHC Conformance Statements, is described in the document:

Introduction to the Integrated DICOM/Network v3.0 (ID/Net v3.0)
Conformance Statement
Direction: 2118780.

This Introduction familiarizes the reader with DICOM terminology and general concepts. It should be read prior to reading the individual products' GEHC Conformance Statements.

The GEHC Conformance Statement, contained in this document, also specifies the Lower Layer communications, which it supports (e.g. TCP/IP). However, the Technical Specifications are defined in the DICOM Part 8 standard.

For more information including Network Architecture and basic DICOM concepts, please refer to the Introduction.

For more information regarding DICOM, copies of the Standard may be obtained by written request or phone by contacting:

DICOM Secretariat
NEMA
1300 N. 17th Street, Suite 1847
Rosslyn, VA 22209 USA

1.3 INTENDED AUDIENCE

The reader of this document is concerned with software design and/or system integration issues. It is assumed that the reader of this document is familiar with the DICOM Standards and with the terminology and concepts, which are used in those Standards.

If readers are unfamiliar with DICOM terminology they should first refer to the document listed below, then read the DICOM Standard itself, prior to reading this DICOM Conformance Statement document.

Introduction to the Integrated DICOM/Network v3.0 (ID/Net v3.0)
Conformance Statement
Direction: 2118780

1.4 SCOPE AND FIELD OF APPLICATION

It is the intent of this document, in conjunction with the *Introduction to the Integrated DICOM/Network v3.0 (ID/Net v3.0) Conformance Statement, Direction: 2118780*, to provide an unambiguous specification for GEHC implementations. This specification, called a Conformance Statement, includes a DICOM Conformance Statement and is necessary to ensure proper processing and interpretation of GEHC medical data exchanged using DICOM. The GEHC Conformance Statements are available to the public.

The reader of this DICOM Conformance Statement should be aware that different GEHC devices are capable of using different Information Object Definitions. For example, a GEHC CT Scanner may send images using the CT Information Object, MR Information Object, Secondary Capture Object, etc.

Included in this DICOM Conformance Statement are the Module Definitions, which define all data elements, used by this GEHC implementation. If the user encounters unspecified private data elements while parsing a GEHC Data Set, the user is well advised to ignore those data elements (per the DICOM standard). Unspecified private data element information is subject to change without notice. If, however, the device is acting as a “full fidelity storage device”, it should retain and re-transmit all of the private data elements which are sent by GEHC devices.

1.5 IMPORTANT REMARKS

The use of these DICOM Conformance Statements, in conjunction with the DICOM Standards, is intended to facilitate communication with GE imaging equipment. However, **by itself, it is not sufficient to ensure that inter-operation will be successful.** The **user (or user's agent)** needs to proceed with caution and address at least four issues:

- **Integration** - The integration of any device into an overall system of interconnected devices goes beyond the scope of standards (DICOM), and of this introduction and associated DICOM Conformance Statements when interoperability with non-GE equipment is desired. The responsibility to analyze the applications requirements and to design a solution that integrates GE imaging equipment with non-GE systems is the **user's** responsibility and should not be underestimated. The **user** is strongly advised to ensure that such an integration analysis is correctly performed.
- **Validation** - Testing the complete range of possible interactions between any GE device and non-GE devices, before the connection is declared operational, should not be overlooked. Therefore, the **user** should ensure that any non-GE provider accepts full responsibility for all validation required for their connection with GE devices. This includes the accuracy of the image data once it has crossed the interface between the GE imaging equipment and the non-GE device and the stability of the image data for the intended applications.
- Such a validation is required before any clinical use (diagnosis and/or treatment) is performed. It applies when images acquired on GE imaging equipment are processed/displayed on a non-GE device, as well as when images acquired on non-GE equipment is processed/displayed on a GE console or workstation.
- **Future Evolution** - GE understands that the DICOM Standard will evolve to meet the user's growing requirements. GE is actively involved in the development of the DICOM Standard. DICOM will incorporate new features and technologies and GE may follow the evolution of the Standard. The GEHC protocol is based on DICOM as specified in each DICOM Conformance Statement. Evolution of the Standard may require changes to devices, which have implemented DICOM. **In addition, GE reserves the right to discontinue or make changes to the support of communications features (on its products) reflected on by these DICOM Conformance Statements.** The **user** should ensure that any non-GE provider, which connects with GE devices, also plans for the future evolution of the DICOM Standard. Failure to do so will likely result in the loss of function and/or connectivity as the DICOM Standard changes and GE Products are enhanced to support these changes.
- **Interaction** - It is the sole responsibility of the **non-GE provider** to ensure that communication with the interfaced equipment does not cause degradation of GE imaging equipment performance and/or function.

1.6 REFERENCES

A list of references, which is applicable to all GEHC Conformance Statements, is included in the *Introduction to the Integrated DICOM/Network v3.0 (ID/Net v3.0) Conformance Statement, Direction: 2118780.*

The information object implementation refers to DICOM PS 3.3 (Information Object Definition).

1.7 DEFINITIONS

A set of definitions, which is applicable to all GEHC Conformance Statements, is included in *the Introduction to the Integrated DICOM/Network v3.0 (ID/Net v3.0) Conformance Statement, Direction: 2118780.*

1.8 SYMBOLS AND ABBREVIATIONS

A list of symbols and abbreviations, which is applicable to all GEHC Conformance Statements, is included in *the Introduction to the Integrated DICOM/Network v3.0 (ID/Net v3.0) Conformance Statement, Direction: 2118780.*

2. NETWORK CONFORMANCE STATEMENT

2.1 INTRODUCTION

This section of the DICOM Conformance Statement specifies the compliance to DICOM conformance requirements for the relevant **Networking** features for EchoPAC PC version 3. Note that the format of this section strictly follows the format defined in DICOM Standard PS 3.2 (Conformance). Please refer to that part of the standard while reading this section.

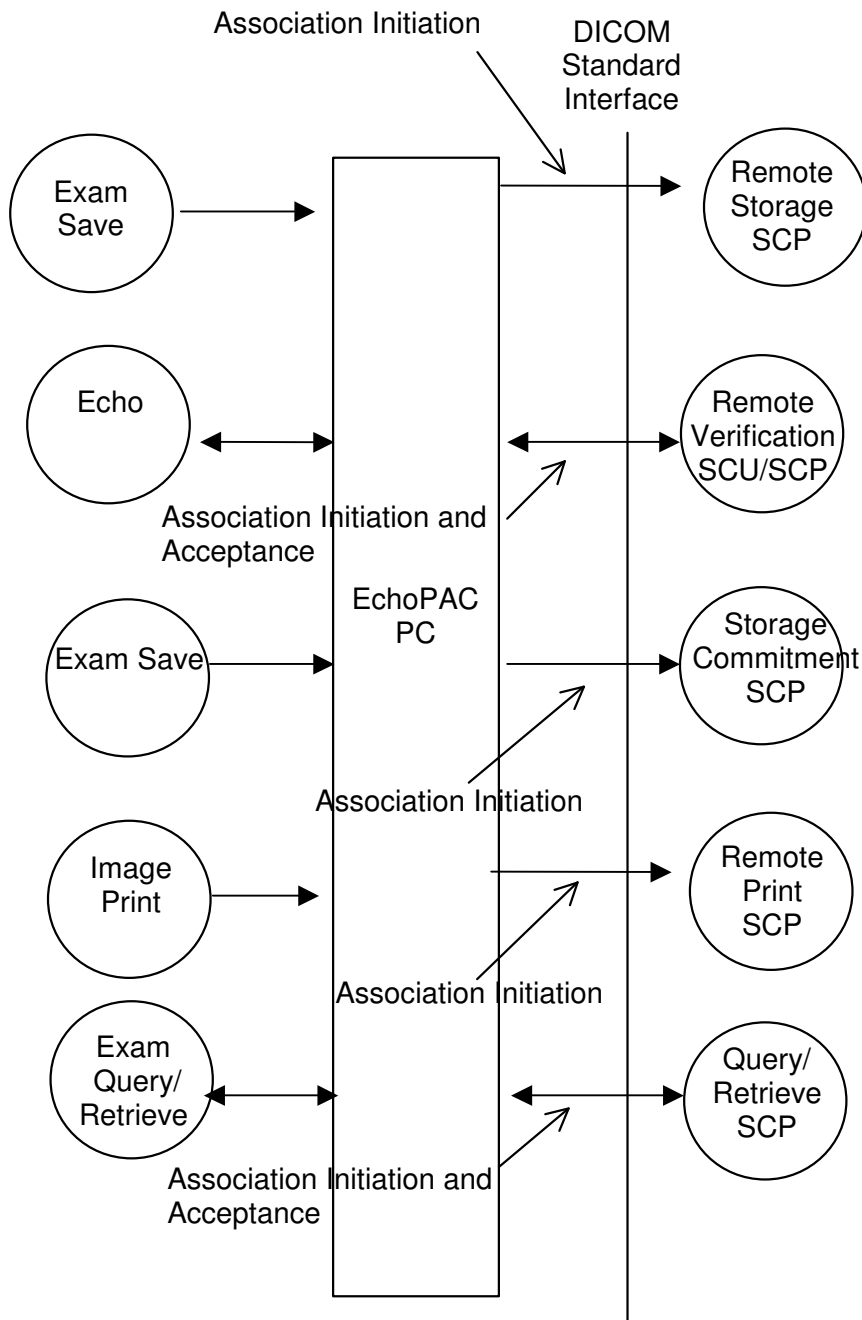
EchoPAC PC is an Ultrasound workstation running on a commercial computer. It allows for the following DICOM functionality:

- Sending and receiving Echo messages to and from DICOM Verification SCP and client.
- Exporting DICOM images to a DICOM SCP or saving the DICOM images to DICOM media format.
- Browsing and viewing DICOM images on DICOM media format.
- Sending storage commitment requests (and receiving replies) to a DICOM Storage Commitment SCP.
- Printing images to a DICOM Printer.
- Querying for examinations from a DICOM Query/Retrieve SCP.

2.2 IMPLEMENTATION MODEL

2.2.1 Application Data Flow Diagram

The Basic and Specific Application models for this device are shown in the following illustration:



There are five local real-world activities that occur in EchoPAC PC - **Exam Save, Echo, Image Print, Exam Query/Retrieve** and **Image Storage**.

Exam save initiates a connection with the DICOM SCP and transmits images to the DICOM SCP. If Storage Commitment is configured a commitment request will be sent for the images.

Echo initiates a connection with the DICOM SCP, posts a Verification request and closes the connection. It also responds to incoming Verification requests (for service use).

Image Print will send images to a DICOM Print SCP.

Exam Query/Retrieve initiates a connection with the DICOM SCP, performs a query and retrieves selected examination.

2.2.2 Functional Definition of AE's

Application Entity EchoPAC PC supports the following functions:

- Initiates a DICOM association to send images.
- Transmits DICOM images to the DICOM Storage SCP.
- Initiates a DICOM verification to assist in network diagnostics.
- Responds to DICOM verification requests from other devices.
- Initiates a DICOM association to request storage commitment of images.
- Responds to replies for storage commitment requests of images.
- Initiates a DICOM association to print images.
- Initiates a DICOM association to query for and retrieve examinations.
- Responds to replies for examination retrieve requests.

2.2.3 Sequencing of Real-World Activities

Not applicable.

2.3 AE SPECIFICATIONS

2.3.1 EchoPAC PC AE Specification

This Application Entity provides Standard Conformance to the following DICOM SOP Classes as an SCU:

| SOP Class Name | SOP Class UID |
|--|-----------------------------|
| Ultrasound Multi-frame Image Storage | 1.2.840.10008.5.1.4.1.1.3.1 |
| Ultrasound Multi-frame Image Storage (Retired) | 1.2.840.10008.5.1.4.1.1.3 |

| | |
|--|-----------------------------|
| Ultrasound Image Storage | 1.2.840.10008.5.1.4.1.1.6.1 |
| Ultrasound Image Storage (Retired) | 1.2.840.10008.5.1.4.1.1.6 |
| Secondary Capture Image Storage | 1.2.840.10008.5.1.4.1.1.7 |
| Verification SOP Class | 1.2.840.10008.1.1 |
| Storage Commitment Push Model SOP Class | 1.2.840.10008.1.20.1 |
| Basic Grayscale Print Management Meta SOP Class | 1.2.840.10008.5.1.1.9 |
| Basic Color Print Management Meta SOP Class | 1.2.840.10008.5.1.1.18 |
| Study Root Query/Retrieve Information Model – FIND | 1.2.840.10008.5.1.4.1.2.2.1 |
| Study Root Query/Retrieve Information Model – MOVE | 1.2.840.10008.5.1.4.1.2.2.2 |

This Application Entity provides Standard Conformance to the following DICOM SOP Classes as an SCP:

| SOP Class Name | SOP Class UID |
|--|-----------------------------|
| Ultrasound Multi-frame Image Storage | 1.2.840.10008.5.1.4.1.1.3.1 |
| Ultrasound Multi-frame Image Storage (Retired) | 1.2.840.10008.5.1.4.1.1.3 |
| Ultrasound Image Storage | 1.2.840.10008.5.1.4.1.1.6.1 |
| Ultrasound Image Storage (Retired) | 1.2.840.10008.5.1.4.1.1.6 |
| Secondary Capture Image Storage | 1.2.840.10008.5.1.4.1.1.7 |
| Verification SOP Class | 1.2.840.10008.1.1 |

2.3.1.1 Association Establishment Policies

2.3.1.1.1 General

The DICOM Application Context Name (ACN), which is always proposed, is:

| | |
|---------------------------------|------------------------------|
| Application Context Name | 1.2.840.10008.3.1.1.1 |
|---------------------------------|------------------------------|

The Maximum Length PDU negotiation is included in all association establishment requests. The maximum length PDU for an association initiated by EchoPAC PC is:

| | |
|---------------------------|--------------|
| Maximum Length PDU | 32768 |
|---------------------------|--------------|

The SOP Class Extended Negotiation is not supported.

The user information Items sent by this product are:

- Maximum PDU Length
- Implementation UID
- Implementation Version Name

2.3.1.1.2 Number of Associations

The EchoPAC PC AE will initiate multiple DICOM associations.

2.3.1.1.3 Asynchronous Nature

Asynchronous mode is not supported. All operations will be performed synchronously.

2.3.1.1.4 Implementation Identifying Information

The Implementation UID for this DICOM Implementation is:

| | |
|--------------------------------------|-----------------------------|
| EchoPAC PC Implementation UID | 1.2.840.113619.6.118 |
|--------------------------------------|-----------------------------|

The Implementation Version Name for this DICOM Implementation is:

| | |
|---|---------------------|
| EchoPAC PC Implementation Version Name | EchoPAC_PC_3 |
|---|---------------------|

Note: The Implementation Version Name may change in the future without modification of this document.

2.3.1.2 Association Initiation Policy

The EchoPAC PC AE attempts to establish a new association with a remote device due to six Real-World Activities:

- Exam save initiated by the operator for images and sending request for Storage Commitment.
- Verification, which verifies application level communication between peer DICOM AE's for service purposes.
- Print initiated by the operator for a specific image or group of images.
- Exam Query/Retrieve initiated by the operator for receiving examination information and selecting examination to retrieve.

2.3.1.2.1 Real-World Activity A ('Exam save' Operation)

2.3.1.2.1.1 Associated Real-World Activity

Upon a request by the operator (manual or automatic), images will be sent to a DICOM Storage SCP.

2.3.1.2.1.2 Proposed Presentation Context Tables

The Proposed Presentation Context Table depends on compression according to the following table:

| Presentation Context Table – Proposed | | | | | |
|--|-----------------------------|--|--|-------------|-----------------------------|
| Abstract Syntax | | Transfer Syntax | | Role | Extended Negotiation |
| Name | UID | Name List | UID List | | |
| Presentation Context Table: Compression set to None | | | | | |
| Secondary Capture Image Storage | 1.2.840.10008.5.1.4.1.1.7 | Explicit VR Little Endian Explicit VR Big Endian Implicit VR Little Endian | 1.2.840.10008.1.2.1 1.2.840.10008.1.2.2 1.2.840.10008.1.2 | SCU | None |
| Ultrasound Image Storage | 1.2.840.10008.5.1.4.1.1.6.1 | Explicit VR Little Endian Explicit VR Big Endian Implicit VR Little Endian | 1.2.840.10008.1.2.1 1.2.840.10008.1.2.2 1.2.840.10008.1.2 | SCU | None |
| Ultrasound Multi-frame Image Storage | 1.2.840.10008.5.1.4.1.1.3.1 | Explicit VR Little Endian Explicit VR Big Endian Implicit VR Little Endian | 1.2.840.10008.1.2.1 1.2.840.10008.1.2.2 1.2.840.10008.1.2 | SCU | None |
| Ultrasound Image Storage (retired) | 1.2.840.10008.5.1.4.1.1.6 | Explicit VR Little Endian Explicit VR Big Endian Implicit VR Little Endian | 1.2.840.10008.1.2.1 1.2.840.10008.1.2.2 1.2.840.10008.1.2 | SCU | None |
| Ultrasound Multi-frame Image Storage (retired) | 1.2.840.10008.5.1.4.1.1.3 | Explicit VR Little Endian Explicit VR Big Endian Implicit VR Little Endian | 1.2.840.10008.1.2.1 1.2.840.10008.1.2.2 1.2.840.10008.1.2 | SCU | None |
| Presentation Context Table: Compression set to RLE | | | | | |
| Secondary Capture Image Storage | 1.2.840.10008.5.1.4.1.1.7 | Run Length Encoding, RLE Explicit VR Little Endian Explicit VR Big Endian Implicit VR Little Endian | 1.2.840.10008.1.2.5 1.2.840.10008.1.2.1 1.2.840.10008.1.2.2 1.2.840.10008.1.2 | SCU | None |
| Ultrasound Image Storage | 1.2.840.10008.5.1.4.1.1.6.1 | Run Length Encoding, RLE Explicit VR Little Endian Explicit VR Big Endian Implicit VR Little Endian | 1.2.840.10008.1.2.5 1.2.840.10008.1.2.1 1.2.840.10008.1.2.2 1.2.840.10008.1.2 | SCU | None |
| Ultrasound Multi-frame Image Storage | 1.2.840.10008.5.1.4.1.1.3.1 | Run Length Encoding, RLE Explicit VR Little Endian Explicit VR Big Endian Implicit VR Little Endian | 1.2.840.10008.1.2.5 1.2.840.10008.1.2.1 1.2.840.10008.1.2.2 1.2.840.10008.1.2 | SCU | None |
| Ultrasound Image Storage (retired) | 1.2.840.10008.5.1.4.1.1.6 | Run Length Encoding, RLE Explicit VR Little Endian Explicit VR Big Endian Implicit VR Little Endian | 1.2.840.10008.1.2.5 1.2.840.10008.1.2.1 1.2.840.10008.1.2.2 1.2.840.10008.1.2 | SCU | None |
| Ultrasound Multi-frame Image Storage (retired) | 1.2.840.10008.5.1.4.1.1.3 | Run Length Encoding, RLE Explicit VR Little Endian Explicit VR Big Endian Implicit VR Little Endian | 1.2.840.10008.1.2.5 1.2.840.10008.1.2.1 1.2.840.10008.1.2.2 1.2.840.10008.1.2 | SCU | None |
| Presentation Context Table: Compression set to JPEG | | | | | |
| Secondary Capture Image Storage | 1.2.840.10008.5.1.4.1.1.7 | JPEG Baseline | 1.2.840.10008.1.2.4.5 0 | SCU | None |
| Ultrasound Image Storage | 1.2.840.10008.5.1.4.1.1.6.1 | JPEG Baseline | 1.2.840.10008.1.2.4.5 0 | SCU | None |
| Ultrasound Multi-frame Image Storage | 1.2.840.10008.5.1.4.1.1.3.1 | JPEG Baseline | 1.2.840.10008.1.2.4.5 0 | SCU | None |
| Ultrasound Image Storage | 1.2.840.10008.5.1.4.1.1.6 | JPEG Baseline | 1.2.840.10008.1.2.4.5 0 | SCU | None |

| | | | | | |
|--|---------------------------|---------------|----------------------------|-----|------|
| Ultrasound Multi-frame Image Storage (retired) | 1.2.840.10008.5.1.4.1.1.3 | JPEG Baseline | 1.2.840.10008.1.2.4.5 0 | SCU | None |
|--|---------------------------|---------------|----------------------------|-----|------|

2.3.1.2.1.2.1 SOP Specific DICOM Conformance Statement for all Storage SOP Classes

This operation also sends a Storage Commitment Request, with the following proposed presentation context. The result from the SCP is expected on another association for the Storage Commitment result.

| Presentation Context Table Proposed | | | | | |
|--|----------------------|--|---|-------------|-----------------------------|
| Abstract Syntax | | Transfer Syntax | | Role | Extended Negotiation |
| Name | UID | Name List | UID List | | |
| Storage Commitment Push Model SOP Class | 1.2.840.10008.1.20.1 | Explicit VR Little Endian Explicit VR Big Endian Implicit VR Little Endian | 1.2.840.10008.1.2.1 1.2.840.10008.1.2.2 1.2.840.10008.1.2 | SCU | None |

For these SOP classes (Storage and Storage Commitment), all status codes with status Refused or Error are treated as failures and terminate the association and operation. On a failure, the request will be put in a holding queue for the user to manually retry the request. All status codes with status Warning or Success are treated as successes.

2.3.1.2.2 Real-World Activity B ('Echo' Operation)

2.3.1.2.2.1 Associated Real-World Activity

The user may initiate a DICOM Verification Request in the Config screen.

Associations will be released upon the receipt of each C-ECHO confirmation.

In the event that the SCP does not respond, the operation will time out, close the association and inform the user.

2.3.1.2.2.2 Proposed Presentation Context Table

| Presentation Context Table - Proposed | | | | | |
|--|-------------------|--|---|-------------|-----------------------------|
| Abstract Syntax | | Transfer Syntax | | Role | Extended Negotiation |
| Name | UID | Name List | UID List | | |
| Verification SOP Class | 1.2.840.10008.1.1 | Explicit VR Little Endian Explicit VR Big Endian Implicit VR Little Endian | 1.2.840.10008.1.2.1 1.2.840.10008.1.2.2 1.2.840.10008.1.2 | SCU | None |

2.3.1.2.3 Real-World Activity C ('Image Print' Operation)

2.3.1.2.3.1 Associated Real-World Activity

Upon a request by the operator, print jobs will be sent to a DICOM Print SCP. If an error occurs during the transmission, the current association is released and a new association initiated. The maximum number of retries is configurable.

2.3.1.2.3.2 Proposed Presentation Context Tables

The following table is used:

| Presentation Context Table - Proposed | | | | | |
|---|------------------------|---------------------------|---------------------|-------------|-----------------------------|
| Abstract Syntax | | Transfer Syntax | | Role | Extended Negotiation |
| Name | UID | Name List | UID List | | |
| Basic Grayscale Print Management Meta SOP Class | 1.2.840.10008.5.1.1.9 | Explicit VR Little Endian | 1.2.840.10008.1.2.1 | SCU | None |
| | | Explicit VR Big Endian | 1.2.840.10008.1.2.2 | | |
| | | Implicit VR Little Endian | 1.2.840.10008.1.2 | | |
| Basic Color Print Management Meta SOP Class | 1.2.840.10008.5.1.1.18 | Explicit VR Little Endian | 1.2.840.10008.1.2.1 | SCU | None |
| | | Explicit VR Big Endian | 1.2.840.10008.1.2.2 | | |
| | | Implicit VR Little Endian | 1.2.840.10008.1.2 | | |

2.3.1.2.3.2.1 SOP Specific DICOM Conformance Statement for all Print Management SOP Classes

All status codes with status Refused or Error are treated as failures and terminate the association and operation. All status codes with status Warning or Success are treated as successes.

2.3.1.2.4 Real-World Activity D ('Exam Query/Retrieve' Operation)

2.3.1.2.4.1 Associated Real-World Activity

The user may initiate a DICOM Exam Query in Search screen, which will send a C-FIND-RQ to the Query/Retrieve SCP.

Associations will be released upon the receipt of C-FIND-RSP confirmation.

The user may then select an examination to be retrieved, using the C-MOVE-RQ command to the Query/Retrieve SCP. The result from the SCP is expected on another association for the retrieved examinations.

2.3.1.2.4.2 Proposed Presentation Context Tables

| Presentation Context Table – Proposed | | | | | |
|--|---------------------------------|---------------------------|---------------------|-------------|-----------------------------|
| Abstract Syntax | | Transfer Syntax | | Role | Extended Negotiation |
| Name | UID | Name List | UID List | | |
| Study Root Query/Retrieve Information Model - FIND | 1.2.840.10008.5.1.4.1.2.2 .1 | Explicit VR Little Endian | 1.2.840.10008.1.2.1 | SCU | None |
| | | Explicit VR Big Endian | 1.2.840.10008.1.2.2 | | |
| | | Implicit VR Little Endian | 1.2.840.10008.1.2 | | |
| Study Root Query/Retrieve Information Model - MOVE | 1.2.840.10008.5.1.4.1.2.2 .2 | Explicit VR Little Endian | 1.2.840.10008.1.2.1 | SCU | None |
| | | Explicit VR Big Endian | 1.2.840.10008.1.2.2 | | |
| | | Implicit VR Little Endian | 1.2.840.10008.1.2 | | |

2.3.1.2.4.2.1 SOP Specific DICOM Conformance Statement for Study Root Query/Retrieve Information Model - FIND SOP Classes

All status codes with status Refused or Error are treated as failures and terminate the association and operation. All status codes with status Warning or Success are treated as successes.

EchoPAC PC will only support hierarchical query.

2.3.1.2.4.2.2 SOP Specific DICOM Conformance Statement for Study Root Query/Retrieve Information Model - MOVE SOP Classes

All status codes with status Refused or Error are treated as failures and terminate the association and operation. All status codes with status Warning or Success are treated as successes.

2.3.1.3 Association Acceptance Policy

The AE accepts an association when EchoPAC PC receives a Verification Request from another network device, a C-STORE request as part of a Query/Retrieve operation or a remote request to store images.

2.3.1.3.1 Real-World Activity B – (‘Echo’ operation)

2.3.1.3.1.1 Associated Real-World Activity

An incoming Verification Request will cause the AE to accept the association and respond with a Verification Response.

2.3.1.3.1.2 Accepted Presentation Context Table

| Presentation Context Table – Accepted | | | | | |
|---------------------------------------|-------------------|--|---|------|----------------------|
| Abstract Syntax | | Transfer Syntax | | Role | Extended Negotiation |
| Name | UID | Name List | UID List | | |
| Verification SOP Class | 1.2.840.10008.1.1 | Explicit VR Little Endian Explicit VR Big Endian Implicit VR Little Endian | 1.2.840.10008.1.2.1 1.2.840.10008.1.2.2 1.2.840.10008.1.2 | SCP | None |

2.3.1.3.1.2.1 SOP Specific DICOM Conformance Statement for Verify SOP Class

The AE provides standard conformance to the Verification SOP Class as an SCP. The default port number is 104.

2.3.1.3.1.3 Presentation Context Acceptance Criterion

No criterion.

2.3.1.3.1.4 Transfer Syntax Selection Policies

The selected transfer syntax is based on the proposed transfer syntax list. The priority order is Explicit VR Little Endian, Explicit VR Big Endian and Implicit VR Little Endian.

2.3.1.3.2 Real-World Activity D (‘Exam Query/Retrieve’ Operation)

2.3.1.3.2.1 Associated Real-World Activity

If the user has initiated a retrieve by a C-MOVE-RQ, the AE will accept associations for C-STORE-RQs. The images will be stored locally.

2.3.1.3.2.2 Accepted Presentation Context Table

| Presentation Context Table - Accepted | | | | | |
|--|-----------------------------|---|--|-------------|-----------------------------|
| Abstract Syntax | | Transfer Syntax | | Role | Extended Negotiation |
| Name | UID | Name List | UID List | | |
| Ultrasound Image Storage | 1.2.840.10008.5.1.4.1.1.6.1 | JPEG Baseline Explicit VR Little Endian Explicit VR Big Endian Implicit VR Little Endian Run Length Encoding, RLE | 1.2.840.10008.1.2.4.50 1.2.840.10008.1.2.1 1.2.840.10008.1.2.2 1.2.840.10008.1.2 1.2.840.10008.1.2.5 | SCP | None |
| Ultrasound Multi-frame Image Storage | 1.2.840.10008.5.1.4.1.1.3.1 | JPEG Baseline Explicit VR Little Endian Explicit VR Big Endian Implicit VR Little Endian Run Length Encoding, RLE | 1.2.840.10008.1.2.4.50 1.2.840.10008.1.2.1 1.2.840.10008.1.2.2 1.2.840.10008.1.2 1.2.840.10008.1.2.5 | SCP | None |
| Ultrasound Image Storage (retired) | 1.2.840.10008.5.1.4.1.1.6 | JPEG Baseline Explicit VR Little Endian Explicit VR Big Endian Implicit VR Little Endian Run Length Encoding, RLE | 1.2.840.10008.1.2.4.50 1.2.840.10008.1.2.1 1.2.840.10008.1.2.2 1.2.840.10008.1.2 1.2.840.10008.1.2.5 | SCP | None |
| Ultrasound Multi-frame Image Storage (retired) | 1.2.840.10008.5.1.4.1.1.3 | JPEG Baseline Explicit VR Little Endian Explicit VR Big Endian Implicit VR Little Endian Run Length Encoding, RLE | 1.2.840.10008.1.2.4.50 1.2.840.10008.1.2.1 1.2.840.10008.1.2.2 1.2.840.10008.1.2 1.2.840.10008.1.2.5 | SCP | None |
| Secondary Capture Image Storage | 1.2.840.10008.5.1.4.1.1.7 | JPEG Baseline Explicit VR Little Endian Explicit VR Big Endian Implicit VR Little Endian Run Length Encoding, RLE | 1.2.840.10008.1.2.4.50 1.2.840.10008.1.2.1 1.2.840.10008.1.2.2 1.2.840.10008.1.2 1.2.840.10008.1.2.5 | SCP | None |

2.3.1.3.2.2.1 SOP Specific DICOM Conformance Statement for Storage SOP Classes

The AE provides standard conformance to the Storage SOP Classes as an SCP. The default port number is 104.

2.3.1.3.2.3 Presentation Context Acceptance Criterion

No criterion.

2.3.1.3.2.4 Transfer Syntax Selection Policies

The selected transfer syntax is based on the proposed transfer syntax list. The priority order is JPEG Baseline Explicit VR Little Endian Explicit VR Big Endian Implicit VR Little Endian and Run Length Encoding, RLE.

2.3.1.3.2.5 Associated Real-World Activity

If so configured, the EchoPAC PC AE will accept an association from a remote Application Entity to transfer images to the EchoPAC PC AE for image storage. This association supports the Real-World Activity Remote Request for Image Storage.

2.3.1.3.2.6 Accepted Presentation Context Table

The EchoPAC PC AE will accept multiple Presentation Contexts for the Remote Request for Image Storage activity as shown in the following table. A single association may be used both for this activity and for any of the other activities with the EchoPAC PC AE as the association acceptor.

| Presentation Context Table – Accepted | | | | | |
|--|-----------------------------|---|--|-------------|-----------------------------|
| Abstract Syntax | | Transfer Syntax | | Role | Extended Negotiation |
| Name | UID | Name List | UID List | | |
| Ultrasound Multi-frame Image Storage | 1.2.840.10008.5.1.4.1.1.3.1 | Implicit VR Little Endian Explicit VR Little Endian Explicit VR Big Endian JPEG Baseline (Process 1) RLE Lossless | 1.2.840.10008.1.2 1.2.840.10008.1.2.1 1.2.840.10008.1.2.2 1.2.840.10008.1.2.4.50 1.2.840.10008.1.2.5 | SCP | None |
| Ultrasound Image Storage | 1.2.840.10008.5.1.4.1.1.6.1 | Implicit VR Little Endian Explicit VR Little Endian Explicit VR Big Endian JPEG Baseline (Process 1) RLE Lossless | 1.2.840.10008.1.2 1.2.840.10008.1.2.1 1.2.840.10008.1.2.2 1.2.840.10008.1.2.4.50 1.2.840.10008.1.2.5 | SCP | None |
| Secondary Capture Image Storage | 1.2.840.10008.5.1.4.1.1.7 | Implicit VR Little Endian Explicit VR Little Endian Explicit VR Big Endian | 1.2.840.10008.1.2 1.2.840.10008.1.2.1 1.2.840.10008.1.2.2 | SCP | None |
| Ultrasound Multi-frame Image Storage (retired) | 1.2.840.10008.5.1.4.1.1.3 | Implicit VR Little Endian Explicit VR Little Endian Explicit VR Big Endian JPEG Baseline (Process 1) RLE Lossless | 1.2.840.10008.1.2 1.2.840.10008.1.2.1 1.2.840.10008.1.2.2 1.2.840.10008.1.2.4.50 1.2.840.10008.1.2.5 | SCP | None |
| Ultrasound Image Storage (retired) | 1.2.840.10008.5.1.4.1.1.6 | Implicit VR Little Endian Explicit VR Little Endian Explicit VR Big Endian JPEG Baseline (Process 1) RLE Lossless | 1.2.840.10008.1.2 1.2.840.10008.1.2.1 1.2.840.10008.1.2.2 1.2.840.10008.1.2.4.50 1.2.840.10008.1.2.5 | SCP | None |

2.3.1.3.2.6.1 SOP Specific DICOM Conformance Statement for all Storage SOP Classes

The EchoPAC PC AE provides Level 2 (FULL) Conformance, and stores all standard and private data elements of received SOP Instances.

Successfully received SOP Instances may be accessed via the EchoPAC PC user interface. SOP Instances are stored until manually deleted by the user.

Following are the status codes the Application may send back to the SCU Equipment after performing the requested **Storage** :

| Service Status | Status Code | Further Meaning | Status Code Explanation | Related Fields Sent Back to the SCU |
|-----------------------|--------------------|--|---|--|
| Failure | A700 | Refused: Out of resources | Disk Full Disk File System Error | (0000,0902) |
| | A900 | Error: Data Set does not match SOP Class | Affected SOP Class UID (0000,0002) is not the same as the IOD SOP Class UID (0008,0016) | (0000,0901) (0000,0902) |
| | C000 | Error: Cannot Understand | Affected SOP Instance UID (0000,1000) is not the same as the IOD SOP Instance UID (0008,0018) | (0000,0901) (0000,0902) |
| Success | 0000 | | | None |

2.3.1.3.2.7 Presentation Context Acceptance Criterion

The EchoPAC PC AE will accept the Presentation Contexts for the SOP Classes associated with Image File Storage only if a minimum amount of storage space is available on the online disk. If such space is not available, the EchoPAC PC AE will return a Result/Reason "No-reason (provider rejection)" for all Presentation Contexts proposed for Storage SOP Classes.

2.3.1.3.2.8 Transfer Syntax Selection Policies

Within each Presentation Context, the EchoPAC PC AE will accept the first proposed transfer syntax that it also supports for that Abstract Syntax.

2.4 COMMUNICATION PROFILES

2.4.1 Supported Communication Stacks (PS 3.8, PS 3.9)

DICOM Upper Layer (PS 3.8) is supported using TCP/IP.

2.4.2 TCP/IP Stack

The TCP/IP stack is inherited from the product's operating system. Please refer to product documentation for more information.

2.4.2.1 API

Not applicable to this product.

2.5 EXTENSIONS / SPECIALIZATIONS / PRIVATIZATIONS

If so configured, the product will send ultrasound raw data information in private data elements designated by the Private Creator element:

| Element Name | Tag | VR | VM | Description |
|-----------------|-----------|----|----|--------------------------------|
| Private Creator | 7FE1,00xx | LO | 1 | GEMS_Ultrasound_MovieGroup_001 |

This means that all private tags starting with 7FE1,xx will belong to the GEMS_Ultrasound_MovieGroup_001.

If so configured, the product will send preview image in private data elements designated by the Private Creator element:

| Element Name | Tag | VR | VM | Description |
|-----------------|-----------|----|----|--------------------------------|
| Private Creator | 6003,00xx | LO | 1 | GEMS_Ultrasound_ImageGroup_001 |

This means that all private tags starting with 6003,xx will belong to the GEMS_Ultrasound_ImageGroup_001.

2.6 CONFIGURATION

2.6.1 AE Title/Presentation Address Mapping

The Local AE title is configurable through the Config screen, see below.

The EchoPAC PC AE resolves addresses of other applications and entities using a configurable look-up table. This table is maintained by the system administrator using the EchoPAC PC Configuration user interface.

2.6.2 Configurable Parameters

Network:

- Local IP address
- Local port number (default 104)
- Local IP netmask
- Local routing table information

Local:

- Local AE Title

Verification:

- The AE Title, IP address and port number of the SCP
- Max retries, Retry interval, Timeout

Storage:

- The AE Title, IP address and port number of the SCP
- Max retries, Retry interval, Timeout
- Enable/disable raw data
- Frame rate reduction
- Enable/disable multi-frame
- Compression selections
- Color support
- Association strategies: one association per image or one association per exam

Storage Commitment:

- The AE Title, IP address and port number of the SCP
- Max retries, Retry interval, Timeout

Print:

- The AE Title, IP address and port number of the SCP
- Max retries, Retry interval, Timeout
- Configuration for each job according to attribute description in Section 11 of this document.

Query/Retrieve:

- The AE Title, IP address and port number of the SCP
- Max retries, Retry interval, Timeout
- Disabling/enabling and setting constant values for query fields
- Maximum number of downloaded entries

2.7 SUPPORT OF EXTENDED CHARACTER SETS

EchoPAC PC will support the ISO_IR 100 (ISO 8859-1:1987 Latin alphabet N 1. supplementary set) as extended character set. Any incoming SOP instance that is encoded using another extended character set will not be displayed.

For Remote Storage only: No extended character sets supported.

2.8 CODES AND CONTROLLED TERMINOLOGY

2.8.1 Fixed Coded Terminology

Not applicable.

2.9 SECURITY PROFILES

The product does not conform to any defined DICOM Security Profiles.

It is assumed that the product is used within a secured environment. It is assumed that a secured environment includes at a minimum:

1. Firewall or router protections to ensure that only approved external hosts have network access to the product.
2. Firewall or router protections to ensure that the product only has network access to approved external hosts and services.
3. Any communications with external hosts and services outside the locally secured environment use appropriate secure network channels (such as a Virtual Private Network(VPN))

3. MEDIA STORAGE CONFORMANCE STATEMENT

3.1 INTRODUCTION

This section of the conformance statement (CS) specifies the EchoPAC PC compliance to DICOM Media Interchange. It details the DICOM Media Storage Application Profiles and roles, which are supported by this product.

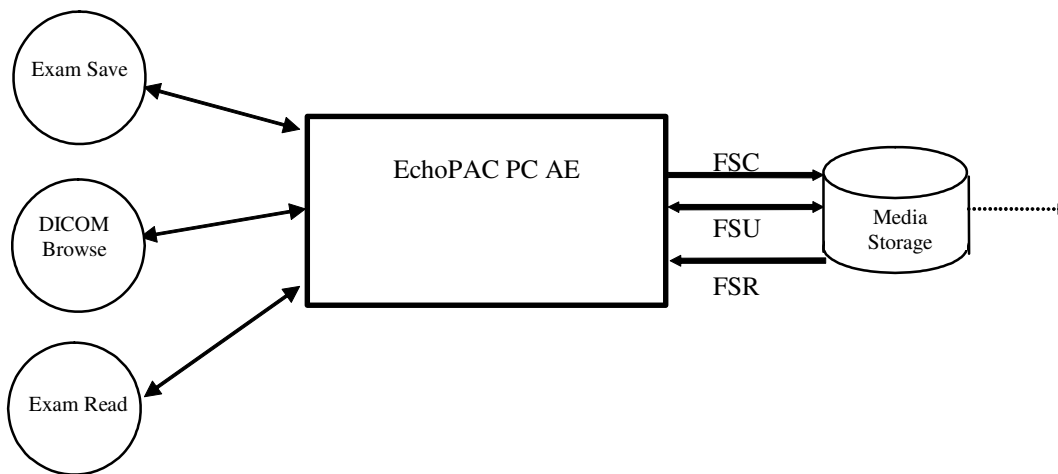
EchoPAC PC is able to export images to DICOM media, browse DICOM media or read images from DICOM media.

3.2 IMPLEMENTATION MODEL

3.2.1 Application Data Flow Diagram

The Basic and Specific Application models for this device are shown in the following Illustration:

ILLUSTRATION 3-1
SPECIFIC AE APPLICATION MODEL



EchoPAC PC can initialize Media by acting as an FSC to create a new DICOM File-set on either 320 MB MOD, 640 MB MOD, 1.2 GB MOD, 2.4 GB MOD or Floppy. The SOP instances written to media must be one of the instances supported by EchoPAC PC. A pre-existing File-set will be updated with the information in DICOM files copied to media.

3.2.2 Functional Definition of AE's

EchoPAC PC can perform these functions:

- Create a new DICOM File-set on media

- Update DICOM File-set by adding new SOP instances to the File-set
- Read information and images from the existing File-set

3.2.3 Sequencing Requirements

None applicable

3.2.4 File Meta Information Options (See PS3.10)

The File Meta-Information for this implementation is:

| | |
|--------------------------------------|-----------------------------|
| File Meta-Information Version | 1 |
| EchoPAC PC Implementation UID | 1.2.840.113619.6.118 |
| Implementation Version Name | EchoPAC_PC_3 |

Note: The Implementation Version Name may change in the future without modification of this document.

3.3 AE SPECIFICATIONS

3.3.1 EchoPAC PC AE Specification

The EchoPAC PC Application Entity provides standard conformance to DICOM Interchange Option of the Media Storage Service Class. The Application Profiles and roles are listed below, the standard profiles are augmented with Secondary Capture images. Note that in one case (see 4.5.7.1 US Region Calibration Module), the multi-frame image will be sent without region calibration (i.e. AUG-US-ID-MF-XXX).

| Supported Application Profile | Real World Activity | Role | Description |
|---|----------------------------|---------------------|--------------------|
| AUG-US-SC-SF-CDR, AUG-US-SC-SF-MOD23-90, AUG-US-SC-MF-CDR, AUG-US-SC-MF-MOD23-90 | Exam save | FSR/ FSC/ FSU | Interchange |
| | Browse | FSR | Interchange |
| | Exam Read | FSR | Interchange |

3.3.1.1 File Meta Information for the EchoPAC PC Application Entity

The Source Application Entity is set from the EchoPAC PC local AE title. The local AE is configurable.

Following are the default value set in the File Meta Information for this AE Title:

| | |
|--|---------------------|
| Source Application Entity Title | EchoPAC_PC_3 |
|--|---------------------|

3.3.1.2 Real-World Activities for the EchoPAC PC Application Entity

3.3.1.2.1 Real-World Activity “Exam save”

“Exam save” saves a DICOM SOP instance to media and updates DICOM File Set.

3.3.1.2.1.1 Media Storage Application Profile for the Real-World Activity “Exam save”:

For the list of Application Profiles that invoke this AE for “Exam save” Real-World Activity, see the Table in Section 3.3.1 “EchoPAC PC AE Specification” where the table describing the profiles and real-world activities is defined.

3.3.1.2.1.1.1 Options

Following are the SOP Classes supported by the Real-World Activity “Exam save”:

| Information Object Definition | SOP Class UID | Transfer Syntax | Transfer Syntax UID |
|--------------------------------------|-----------------------------|------------------------------|----------------------------|
| DICOM Media Storage Directory | 1.2.840.10008.1.3.10 | Explicit VR Little Endian | 1.2.840.10008.1.2.1 |
| Ultrasound Multi-frame Image Storage | 1.2.840.10008.5.1.4.1.1.3.1 | Explicit VR Little Endian | 1.2.840.10008.1.2.1 |
| | | Run Length Encoding, RLE | 1.2.840.10008.1.2.5 |
| | | JPEG Baseline | 1.2.840.10008.1.2.4.50 |
| Ultrasound Image Storage | 1.2.840.10008.5.1.4.1.1.6.1 | Explicit VR Little Endian | 1.2.840.10008.1.2.1 |
| | | Run Length Encoding, RLE | 1.2.840.10008.1.2.5 |
| | | JPEG Baseline | 1.2.840.10008.1.2.4.50 |
| Secondary Capture Image Storage | 1.2.840.10008.5.1.4.1.1.7 | Explicit VR Little Endian | 1.2.840.10008.1.2.1 |
| | | Run Length Encoding, RLE | 1.2.840.10008.1.2.5 |
| | | JPEG Baseline | 1.2.840.10008.1.2.4.50 |

3.3.1.2.2 Real-World Activity “DICOM Browse”

DICOM Browse is activated when the user searches for an exam in Search screen.

3.3.1.2.3 Media Storage Application Profile for the Real-World Activity “DICOM Browse”

For the list of Application Profiles that invoke this AE for Image Read Real-World Activity, see the Table in Section 3.2.1 “EchoPAC PC AE Specification”.

3.3.1.2.3.1.1 Options

Following are the SOP Classes supported by the Real-World Activity DICOM Browse:

| Information Object Definition | SOP Class UID | Transfer Syntax | Transfer Syntax UID |
|---|-----------------------------|---------------------------|----------------------------|
| DICOM Media Storage Directory | 1.2.840.10008.1.3.10 | Explicit VR Little Endian | 1.2.840.10008.1.2.1 |
| Ultrasound Multi-frame Image Storage | 1.2.840.10008.5.1.4.1.1.3.1 | Explicit VR Little Endian | 1.2.840.10008.1.2.1 |
| | | Implicit VR Little Endian | 1.2.840.10008.1.2 |
| | | Run Length Encoding, RLE | 1.2.840.10008.1.2.5 |
| | | JPEG Baseline | 1.2.840.10008.1.2.4.50 |
| Ultrasound Multi-frame Image Storage(retired) | 1.2.840.10008.5.1.4.1.1.3 | Explicit VR Little Endian | 1.2.840.10008.1.2.1 |
| | | Implicit VR Little Endian | 1.2.840.10008.1.2 |
| | | Run Length Encoding, RLE | 1.2.840.10008.1.2.5 |
| | | JPEG Baseline | 1.2.840.10008.1.2.4.50 |
| Ultrasound Image Storage | 1.2.840.10008.5.1.4.1.1.6.1 | Explicit VR Little Endian | 1.2.840.10008.1.2.1 |
| | | Implicit VR Little Endian | 1.2.840.10008.1.2 |
| | | Run Length Encoding, RLE | 1.2.840.10008.1.2.5 |
| | | JPEG Baseline | 1.2.840.10008.1.2.4.50 |
| Ultrasound Image Storage (retired) | 1.2.840.10008.5.1.4.1.1.6 | Explicit VR Little Endian | 1.2.840.10008.1.2.1 |
| | | Implicit VR Little Endian | 1.2.840.10008.1.2 |
| | | Run Length Encoding, RLE | 1.2.840.10008.1.2.5 |
| | | JPEG Baseline | 1.2.840.10008.1.2.4.50 |
| Secondary Capture Image Storage | 1.2.840.10008.5.1.4.1.1.7 | Explicit VR Little Endian | 1.2.840.10008.1.2.1 |
| | | Implicit VR Little Endian | 1.2.840.10008.1.2 |
| | | Run Length Encoding, RLE | 1.2.840.10008.1.2.5 |
| | | JPEG Baseline | 1.2.840.10008.1.2.4.50 |

3.3.1.2.4 Real-World Activity “Exam read“

“Exam read” reads and displays a DICOM SOP instance from media.

3.3.1.2.4.1 Media Storage Application Profile for the Real-World Activity “Exam read “

For the list of Application Profiles that invoke this AE for Exam read Real-World Activity, see the Table in Section 3.2.1 “EchoPAC PC AE Specification”.

3.3.1.2.4.1.1 Options

Following are the SOP Classes supported by the Exam read Real-World Activity:

| Information Object Definition | SOP Class UID | Transfer Syntax | Transfer Syntax UID |
|---|-----------------------------|------------------------------|----------------------------|
| DICOM Media Storage Directory | 1.2.840.10008.1.3.10 | Explicit VR Little Endian | 1.2.840.10008.1.2.1 |
| Ultrasound Multi-frame Image Storage | 1.2.840.10008.5.1.4.1.1.3.1 | Explicit VR Little Endian | 1.2.840.10008.1.2.1 |
| | | Implicit VR Little Endian | 1.2.840.10008.1.2 |
| | | Run Length Encoding, RLE | 1.2.840.10008.1.2.5 |
| | | JPEG Baseline | 1.2.840.10008.1.2.4.5 0 |
| Ultrasound Multi-frame Image Storage(retired) | 1.2.840.10008.5.1.4.1.1.3 | Explicit VR Little Endian | 1.2.840.10008.1.2.1 |
| | | Implicit VR Little Endian | 1.2.840.10008.1.2 |
| | | Run Length Encoding, RLE | 1.2.840.10008.1.2.5 |
| | | JPEG Baseline | 1.2.840.10008.1.2.4.5 0 |
| Ultrasound Image Storage | 1.2.840.10008.5.1.4.1.1.6.1 | Explicit VR Little Endian | 1.2.840.10008.1.2.1 |
| | | Implicit VR Little Endian | 1.2.840.10008.1.2 |
| | | Run Length Encoding, RLE | 1.2.840.10008.1.2.5 |
| | | JPEG Baseline | 1.2.840.10008.1.2.4.5 0 |
| Ultrasound Image Storage (retired) | 1.2.840.10008.5.1.4.1.1.6 | Explicit VR Little Endian | 1.2.840.10008.1.2.1 |
| | | Implicit VR Little Endian | 1.2.840.10008.1.2 |
| | | Run Length Encoding, RLE | 1.2.840.10008.1.2.5 |

| | | | |
|---------------------------------|---------------------------|---------------------------|------------------------|
| | | JPEG Baseline | 1.2.840.10008.1.2.4.50 |
| Secondary Capture Image Storage | 1.2.840.10008.5.1.4.1.1.7 | Explicit VR Little Endian | 1.2.840.10008.1.2.1 |
| | | Implicit VR Little Endian | 1.2.840.10008.1.2 |
| | | Run Length Encoding, RLE | 1.2.840.10008.1.2.5 |
| | | JPEG Baseline | 1.2.840.10008.1.2.4.50 |

3.4 AUGMENTED AND PRIVATE APPLICATION PROFILES

EchoPAC PC creates Secondary Capture Image Objects in addition to the objects defined in the application profiles.

3.5 EXTENSIONS, SPECIALIZATIONS, PRIVATIZATIONS OF SOP CLASSES AND TRANSFER SYNTAXES

If so configured, the product will send ultrasound raw data information in private data elements designated by the Private Creator element:

| Element Name | Tag | VR | VM | Description |
|-----------------|-----------|----|----|--------------------------------|
| Private Creator | 7FE1,00xx | LO | 1 | GEMS_Ultrasound_MovieGroup_001 |

This means that all private tags starting with 7FE1,xx will belong to the GEMS_Ultrasound_MovieGroup_001.

If so configured, the product will send preview image in private data elements designated by the Private Creator element:

| Element Name | Tag | VR | VM | Description |
|-----------------|-----------|----|----|--------------------------------|
| Private Creator | 6003,00xx | LO | 1 | GEMS_Ultrasound_ImageGroup_001 |

This means that all private tags starting with 6003,xx will belong to the GEMS_Ultrasound_ImageGroup_001.

3.6 CONFIGURATION

The following parameters are configurable:

- Location of DICOMDIR
- Read or Read/Write
- Enable/disable raw data
- Frame rate reduction
- Enable/disable multi-frame
- Compression selections

3.7 SUPPORT OF EXTENDED CHARACTER SETS

EchoPAC PC will support only the ISO_IR 100 (ISO 8859-1:1987 Latin alphabet N 1. supplementary set) as extended character sets. Any incoming SOP instance that is encoded using another extended character set will not be read.

4. ULTRASOUND (US) INFORMATION OBJECT IMPLEMENTATION

4.1 INTRODUCTION

This section specifies the use of the DICOM US Image IOD to represent the information included in US images produced by this implementation. Corresponding attributes are conveyed using the module construct. The contents of this section are:

4.2 - IOD Implementation

4.3 - IOD Entity-Relationship Model

4.4 - IOD Module Table

4.5 - IOD Module Definition

In this section, supported means that tag is sent with value.

4.2 US IOD IMPLEMENTATION

This section defines the implementation of US image information object.

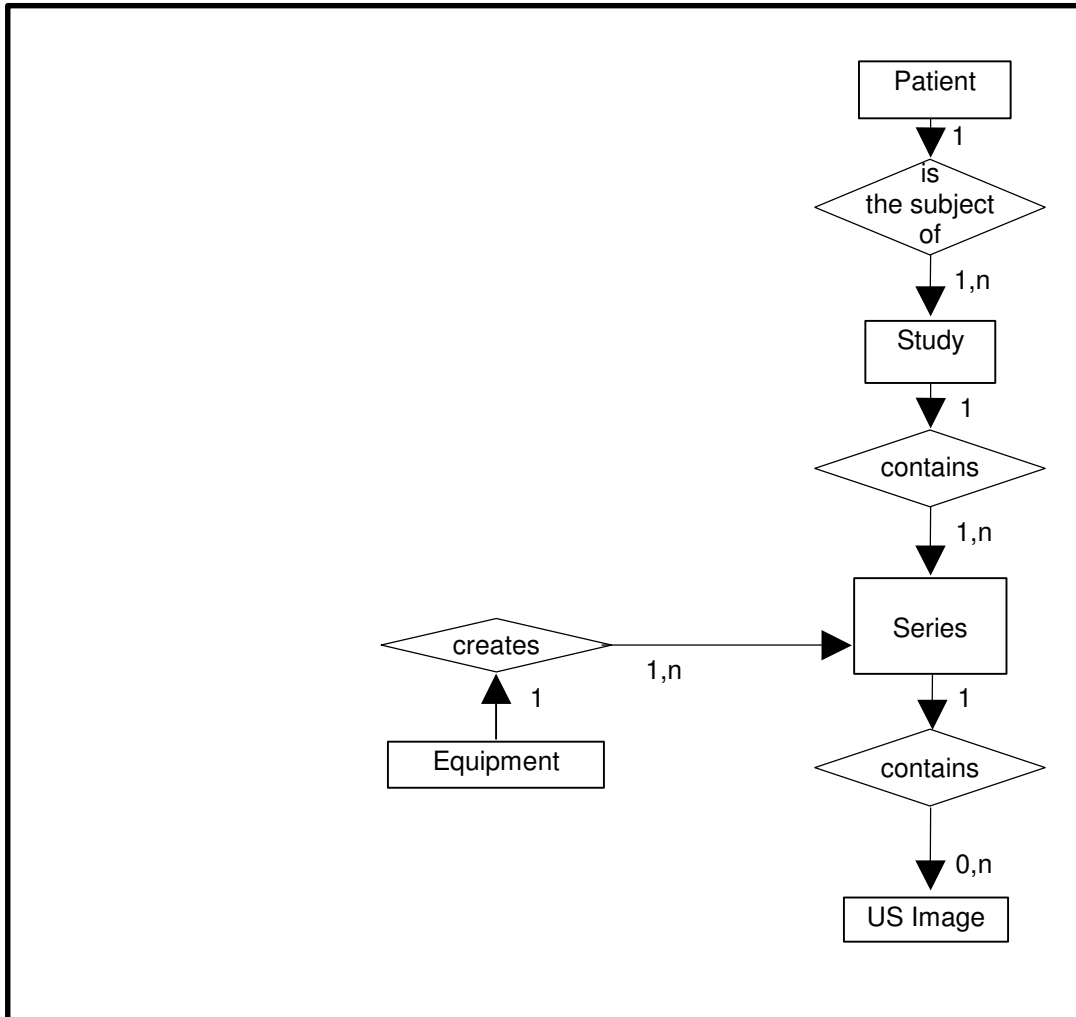
4.3 US ENTITY-RELATIONSHIP MODEL

The Entity-Relationship diagram for the US Image interoperability schema is shown in Illustration 4.3-1. In this figure, the following diagrammatic convention is established to represent the information organization:

- each entity is represented by a rectangular box
- each relationship is represented by a diamond shaped box.
- the fact that a relationship exists between two entities is depicted by lines connecting the corresponding entity boxes to the relationship boxes.

The relationships are fully defined with the maximum number of possible entities in the relationship shown. In other words, the relationship between Series and Image can have up to n Images per Series, but the Patient to Study relationship has 1 Study for each Patient (a Patient can have more than one Study on the system, however each Study will contain all of the information pertaining to that Patient).

ILLUSTRATION 4.3-1
 US IMAGE ENTITY RELATIONSHIP DIAGRAM



4.3.1 Entity Descriptions

Please refer to DICOM Standard Part 3 (Information Object Definitions) for a description of each of the entities contained within the US Information Object.

4.3.2 EchoPAC PC Mapping of DICOM Entities

TABLE 4.3-1
 MAPPING OF DICOM ENTITIES TO ECHOPAC PC ENTITIES

| DICOM | EchoPAC PC Entity |
|---------|-------------------|
| Patient | Patient |
| Study | Exam |
| Series | Exam |
| Image | Image |
| Curve | Not used |

4.4 IOD MODULE TABLE

Within an entity of the DICOM US IOD, attributes are grouped into related set of attributes. A set of related attributes is termed a module. A module facilitates the understanding of the semantics concerning the attributes and how the attributes are related with each other. A module grouping does not infer any encoding of information into data sets.

Table 4.4-1 identifies the defined modules within the entities, which comprise the DICOM US IOD. Modules are identified by Module Name.

See DICOM Part 3 for a complete definition of the entities, modules, and attributes.

Only the single frame US Image IOD is described here.

TABLE 4.4-1
US IMAGE IOD MODULES

| Entity Name | Module Name | Reference |
|--------------------|----------------------------|-----------|
| Patient | Patient | 4.5.1.1 |
| Study | General Study | 4.5.2.1 |
| | Patient Study | 4.5.2.2 |
| Series | General Series | 4.5.3.1 |
| Frame of Reference | Frame of Reference | Not used |
| | US Frame of Reference | Not used |
| Equipment | General Equipment | 4.5.4.1 |
| Image | General Image | 4.5.5.1 |
| | Image Pixel | 4.5.5.2 |
| | Contrast/Bolus | 4.5.5.3 |
| | Palette Color Lookup Table | 4.5.5.4 |
| | US Region Calibration | 4.5.7.1 |
| | US Image | 4.5.7.2 |
| | Overlay Plane | Not used |
| | VOI LUT | 4.5.5.5 |
| SOP Common | 4.5.6.1 | |
| Curve | Not used | |

4.5 INFORMATION MODULE DEFINITIONS

Please refer to DICOM Standard Part 3 (Information Object Definitions) for a description of each of the entities and modules contained within the US Information Object.

The following modules are included to convey Enumerated Values, Defined Terms, and Optional Attributes supported. Type 1 & Type 2 Attributes are also included for completeness and to define what values they may take and where these values are obtained. It should be noted that they are the same ones as defined in the DICOM Standard Part 3 (Information Object Definitions).

4.5.1 Common Patient Entity Modules

4.5.1.1 Patient Module

This section specifies the Attributes of the Patient that describe and identify the Patient who is the subject of a diagnostic Study. This Module contains Attributes of the patient that are needed for diagnostic interpretation of the Image and are common for all studies performed on the patient.

TABLE 4.5-1
PATIENT MODULE ATTRIBUTES

| Attribute Name | Tag | Type | Attribute Description |
|------------------------------|-------------|------|-------------------------------------|
| Patient's Name | (0010,0010) | 2 | May be entered from User Interface. |
| Patient ID | (0010,0020) | 2 | May be entered from User Interface. |
| Patient's Birth Date | (0010,0030) | 2 | May be entered from User Interface. |
| Patient's Sex | (0010,0040) | 2 | May be entered from User Interface. |
| Referenced Patient Sequence | (0008,1120) | 3 | Not used |
| >Referenced SOP Class UID | (0008,1150) | 1C | Not used |
| >Referenced SOP Instance UID | (0008,1155) | 1C | Not used |
| Patient's Birth Time | (0010,0032) | 3 | Not used |
| Other Patient Ids | (0010,1000) | 3 | Not used |
| Other Patient Names | (0010,1001) | 3 | Not used |
| Ethnic Group | (0010,2160) | 3 | Not used |
| Patient Comments | (0010,4000) | 3 | Not used |

4.5.2 Common Study Entity Modules

The following Study IE Modules are common to all Composite Image IODs, which reference the Study IE. These modules contain Attributes of the patient and study that are needed for diagnostic interpretation of the image.

4.5.2.1 General Study Module

This section specifies the attributes that describe and identify the Study performed upon the Patient.

TABLE 4.5-2
GENERAL STUDY MODULE ATTRIBUTES

| Attribute Name | Tag | Type | Attribute Description |
|----------------------------|-------------|------|--------------------------------------|
| Study Instance UID | (0020,000D) | 1 | Uniquely generated by the equipment. |
| Study Date | (0008,0020) | 2 | Is set to examination date |
| Study Time | (0008,0030) | 2 | Is set to examination time |
| Referring Physician's Name | (0008,0090) | 2 | May be entered from User Interface. |

| | | | |
|------------------------------------|-------------|----|-------------------------------------|
| Study ID | (0020,0010) | 2 | May be entered from User Interface. |
| Accession Number | (0008,0050) | 2 | May be entered from User Interface. |
| Study Description | (0008,1030) | 3 | May be entered from User Interface. |
| Physician(s) of Record | (0008,1048) | 3 | Not used |
| Name of Physician(s) Reading Study | (0008,1060) | 3 | Not used |
| Referenced Study Sequence | (0008,1110) | 3 | Not used |
| >Referenced SOP Class UID | (0008,1150) | 1C | Not used |
| >Referenced SOP Instance UID | (0008,1155) | 1C | Not used |

4.5.2.2 Patient Study Module

This section defines attributes that provide information about the Patient at the time that the Study was performed.

TABLE 4.5-3
PATIENT STUDY MODULE ATTRIBUTES

| Attribute Name | Tag | Type | Attribute Description |
|---------------------------------|-------------|-------------|--|
| Admitting Diagnoses Description | (0008,1080) | 3 | Not used |
| Patient's Age | (0010,1010) | 3 | Not used |
| Patient's Size | (0010,1020) | 3 | May be entered from User Interface. |
| Patient's Weight | (0010,1030) | 3 | May be entered from User Interface. |
| Occupation | (0010,2180) | 3 | Not used |
| Additional Patient's History | (0010,21B0) | 3 | May be entered from User Interface (in Referral reason). |
| Admission ID | (0038,0010) | 3 | Not used |
| Issuer of Admission ID | (0038,0011) | 3 | Not used |

4.5.3 Common Series Entity Modules

The following Series IE Modules are common to all Composite Image IODs, which reference the Series IE.

4.5.3.1 General Series Module

This section specifies the attributes that identify and describe general information about the Series within a Study.

TABLE 4.5-4
GENERAL SERIES MODULE ATTRIBUTES

| Attribute Name | Tag | Type | Attribute Description |
|--|-------------|------|--|
| Modality | (0008,0060) | 1 | Defined Term "US" used. |
| Series Instance UID | (0020,000E) | 1 | Uniquely generated by the equipment |
| Series Number | (0020,0011) | 2 | Internal number which is incremented for each new series within a study. |
| Laterality | (0020,0060) | 2C | Not used |
| Series Date | (0008,0021) | 3 | Is set to Series date |
| Series Time | (0008,0031) | 3 | Is set to Series time |
| Performing Physicians' Name | (0008,1050) | 3 | May be entered from User Interface. |
| Protocol Name | (0018,1030) | 3 | Sent if image is acquired in a stress test. |
| Series Description | (0008,103E) | 3 | May be entered from User Interface (in Diagnosis). |
| Operator's Name | (0008,1070) | 3 | May be entered from User Interface. Default is login id. |
| Referenced Performed Procedure Step Sequence | (0008,1111) | 3 | Not used |
| >Referenced SOP Class UID | (0008,1150) | 1C | Not used |
| >Referenced SOP Instance UID | (0008,1155) | 1C | Not used |
| Body Part Examined | (0018,0015) | 3 | Not used |
| Patient Position | (0018,5100) | 2C | Not used |
| Smallest Pixel Value in Series | (0028,0108) | 3 | Not used |
| Largest Pixel Value in Series | (0028,0109) | 3 | Not used |
| Request Attributes Sequence | (0040,0275) | 3 | Not used |
| >Requested Procedure ID | (0040,1001) | 1C | Not used |
| >Scheduled Procedure Step ID | (0040,0009) | 1C | Not used |
| >Scheduled Procedure Step Description | (0040,0007) | 3 | Not used |
| >Scheduled Protocol Code Sequence | (0040,0008) | 3 | Not used |
| >>Include 'Code Sequence Macro' | | | |
| Performed Procedure Step ID | (0040,0253) | 3 | Not used |
| Performed Procedure Step Start Date | (0040,0244) | 3 | Not used |
| Performed Procedure Step Start Time | (0040,0245) | 3 | Not used |
| Performed Procedure Step Description | (0040,0254) | 3 | Not used |
| Performed Protocol Code Sequence | (0040,0260) | 3 | Not used |
| >Include 'Code Sequence Macro' | | | |

4.5.4 Common Equipment Entity Modules

The following Equipment IE Module is common to all Composite Image IODs, which reference the Equipment IE.

4.5.4.1 General Equipment Module

This section specifies the attributes that identify and describe the piece of equipment, which produced a Series of Images.

TABLE 4.5-5
GENERAL EQUIPMENT MODULE ATTRIBUTES

| Attribute Name | Tag | Type | Attribute Description |
|-------------------------------|-------------|------|---|
| Manufacturer | (0008,0070) | 2 | Is set to "GE Vingmed Ultrasound" |
| Institution Name | (0008,0080) | 3 | Is set to configured Institution Name. |
| Institution Address | (0008,0081) | 3 | Not used |
| Station Name | (0008,1010) | 3 | Is set to configured Station Name. |
| Institutional Department Name | (0008,1040) | 3 | May be entered from User Interface. Default is configured Department name. |
| Manufacturer's Model Name | (0008,1090) | 3 | Is set to "EchoPAC PC" or "EchoPAC PC SW-Only". |
| Device Serial Number | (0018,1000) | 3 | Not used |
| Software Versions | (0018,1020) | 3 | Is set to EchoPAC PC software version |
| Spatial Resolution | (0018,1050) | 3 | Not used |
| Date of Last Calibration | (0018,1200) | 3 | Not used |
| Time of Last Calibration | (0018,1201) | 3 | Not used |
| Pixel Padding Value | (0028,0120) | 3 | Not used |

4.5.5 Common Image Entity Modules

The following Image IE Modules are common to all Composite Image IODs, which reference the Image IE.

4.5.5.1 General Image Module

This section specifies the attributes that identify and describe an image within a particular series.

TABLE 4.5-6
GENERAL IMAGE MODULE ATTRIBUTES

| Attribute Name | Tag | Type | Attribute Description |
|---------------------|-------------|------|--|
| Instance Number | (0020,0013) | 2 | Internal value which is incremented for each image within a series |
| Patient Orientation | (0020,0020) | 2C | Sent with empty value. |
| Content Date | (0008,0023) | 2C | Set from Image date |
| Content Time | (0008,0033) | 2C | Set from Image time |

| Attribute Name | Tag | Type | Attribute Description |
|-------------------------------|-------------|------|--|
| Image Type | (0008,0008) | 3 | The first two values contain "ORIGINAL\PRIMARY" or "DERIVED\PRIMARY". Value 4 is a description of the mode. Values 5 and 6 may be used for private data. |
| Acquisition Number | (0020,0012) | 3 | Not used |
| Acquisition Date | (0008,0022) | 3 | Not used |
| Acquisition Time | (0008,0032) | 3 | Not used |
| Acquisition Datetime | (0008,002A) | 3 | Supported |
| Referenced Image Sequence | (0008,1140) | 3 | May be used for related images |
| >Referenced SOP Class UID | (0008,1150) | 1C | |
| >Referenced SOP Instance UID | (0008,1155) | 1C | |
| >Referenced Frame Number | (0008,1160) | 3 | Not used |
| Derivation Description | (0008,2111) | 3 | May contain additional derivation information if Image Type is DERIVED. |
| Source Image Sequence | (0008,2112) | 3 | May be used for source images |
| >Referenced SOP Class UID | (0008,1150) | 1C | |
| >Referenced SOP Instance UID | (0008,1155) | 1C | |
| >Referenced Frame Number | (0008,1160) | 3 | Not used |
| Images in Acquisition | (0020,1002) | 3 | Not used |
| Image Comments | (0020,4000) | 3 | May be used for description of the image |
| Quality Control Image | (0028,0300) | 3 | Not used |
| Burned In Annotation | (0028,0301) | 3 | Not used |
| Lossy Image Compression | (0028,2110) | 3 | Set to 01 if images is lossy compressed. |
| Lossy Image Compression Ratio | (0028,2112) | 3 | Used if lossy compressed. |

4.5.5.2 Image Pixel Module

This section specified the attributes that describe the pixel data of the image.

**TABLE 4.5-7
IMAGE PIXEL MODULE ATTRIBUTES**

| Attribute Name | Tag | Type | Attribute Description |
|-------------------|-------------|------|--|
| Samples per Pixel | (0028,0002) | 1 | Value of '1' if Photometric Interpretation element value has value 'MONOCHROME2' Value of '3' when Photometric Interpretation element value has value 'RGB', 'YBR_FULL' or 'YBR_FULL_422' |

| Attribute Name | Tag | Type | Attribute Description |
|---|-------------|------|--|
| Photometric Interpretation | (0028,0004) | 1 | Defined Values used: "MONOCHROME2", "RGB", "YBR_FULL" or "YBR_FULL_422" |
| Rows | (0028,0010) | 1 | Value depends on scanning mode and configuration setup |
| Columns | (0028,0011) | 1 | Value depends on scanning mode and configuration setup. |
| Bits Allocated | (0028,0100) | 1 | Value always = 0008H. |
| Bits Stored | (0028,0101) | 1 | Value always = 0008H. |
| High Bit | (0028,0102) | 1 | Value always = 0007H. |
| Pixel Representation | (0028,0103) | 1 | Defined Value '0' - unsigned integer. |
| Pixel Data | (7FE0,0010) | 1 | Pixel Data of image. |
| Planar Configuration | (0028,0006) | 1C | Enumerated value 0000H, color-by-pixel, if Photometric Interpretation element value has value 'RGB' or if image is JPEG compressed. Enumerated value 0001H, color-by-plane if image is RLE compressed. |
| Pixel Aspect Ratio | (0028,0034) | 1C | Not used |
| Smallest Image Pixel Value | (0028,0106) | 3 | Not used |
| Largest Image Pixel Value | (0028,0107) | 3 | Not used |
| Red Palette Color Lookup Table Descriptor | (0028,1101) | 1C | Only used when reading Palette images. |
| Green Palette Color Lookup Table Descriptor | (0028,1102) | 1C | Only used when reading Palette images. |
| Blue Palette Color Lookup Table Descriptor | (0028,1103) | 1C | Only used when reading Palette images. |
| Red Palette Color Lookup Table Data | (0028,1201) | 1C | Only used when reading Palette images. |
| Green Palette Color Lookup Table Data | (0028,1202) | 1C | Only used when reading Palette images. |
| Blue Palette Color Lookup Table Data | (0028,1203) | 1C | Only used when reading Palette images. |

4.5.5.3 Contrast/Bolus Module

This section specifies the attributes that describe the contrast /bolus used in the acquisition of the Image.

TABLE 4.5-8
CONTRAST/BOLUS MODULE ATTRIBUTES

| Attribute Name | Tag | Type | Attribute Description |
|--|-------------|------|-------------------------------------|
| Contrast/Bolus Agent | (0018,0010) | 2 | May be entered from User Interface. |
| Contrast/Bolus Agent Sequence | (0018,0012) | 3 | Not used |
| >Include 'Code Sequence Macro' | | | |
| Contrast/Bolus Route | (0018,1040) | 3 | Not used |
| Contrast/Bolus Administration Route Sequence | (0018,0014) | 3 | Not used |
| >Include 'Code Sequence Macro' | | | |

| Attribute Name | Tag | Type | Attribute Description |
|---|-------------|------|-----------------------|
| >Additional Drug Sequence | (0018,002A) | 3 | Not used |
| >>Include 'Code Sequence Macro' | | | |
| Contrast/Bolus Volume | (0018,1041) | 3 | Not used |
| Contrast/Bolus Start Time | (0018,1042) | 3 | Not used |
| Contrast/Bolus Stop Time | (0018,1043) | 3 | Not used |
| Contrast/Bolus Total Dose | (0018,1044) | 3 | Not used |
| Contrast Flow Rate(s) | (0018,1046) | 3 | Not used |
| Contrast Flow Duration(s) | (0018,1047) | 3 | Not used |
| Contrast/Bolus Ingredient | (0018,1048) | 3 | Not used |
| Contrast/Bolus Ingredient Concentration | (0018,1049) | 3 | Not used |

4.5.5.4 Palette Color Lookup Table Module

This section specifies the attributes that describe the Lookup table data for images with Palette Color photometric interpretation.

TABLE 4.5-9
PALETTE COLOR LOOKUP MODULE

| Attribute Name | Tag | Type | Attribute Description |
|---|-------------|------|--|
| Red Palette Color Lookup Table Descriptor | (0028,1101) | 1C | Only used when reading Palette images. |
| Green Palette Color Lookup Table Descriptor | (0028,1102) | 1C | Only used when reading Palette images. |
| Blue Palette Color Lookup Table Descriptor | (0028,1103) | 1C | Only used when reading Palette images. |
| Palette Color Lookup Table UID | (0028,1199) | 3 | Not used |
| Red Palette Color Lookup Table Data | (0028,1201) | 1C | Only used when reading Palette images. |
| Green Palette Color Lookup Table Data | (0028,1202) | 1C | Only used when reading Palette images. |
| Blue Palette Color Lookup Table Data | (0028,1203) | 1C | Only used when reading Palette images. |
| Segmented Red Palette Color Lookup Table Data | (0028,1221) | 1C | Not used |
| Segmented Green Palette Color Lookup Table Data | (0028,1222) | 1C | Not used |
| Segmented Red Palette Color Lookup Table Data | (0028,1223) | 1C | Not used |

4.5.5.5 VOI LUT Module

This section specifies the attributes that identify and describe the VOI LUT Module

TABLE 4.5-10
VOI LUT MODULE ATTRIBUTES

| Attribute Name | Tag | Type | Attribute Description |
|-----------------------------------|-------------|------|---|
| VOI LUT Sequence | (0028,3010) | 3 | Not used |
| >LUT Descriptor | (0028,3002) | 3 | Not used |
| >LUT Explanation | (0028,3003) | 3 | Not used |
| >LUT Data | (0028,3006) | 3 | Not used |
| Window Center | (0028,1050) | 3 | Value set to 127 if Photometric Interpretation has value MONOCHROME2. |
| Window Width | (0028,1051) | 3 | Value set to 256 if Photometric Interpretation has value MONOCHROME2. |
| Window Center & Width Explanation | (0028,1055) | 3 | Not used |

4.5.6 General Modules

The SOP Common Module is mandatory for all DICOM IODs.

4.5.6.1 SOP Common Module

This section defines the attributes that are required for proper functioning and identification of the associated SOP Instances. They do not specify any semantics about the Real-World Object represented by the IOD.

TABLE 4.5-11
SOP COMMON MODULE ATTRIBUTES

| Attribute Name | Tag | Type | Attribute Description |
|------------------------|-------------|------|--|
| SOP Class UID | (0008,0016) | 1 | Set to “1.2.840.10008.5.1.4.1.1.3.1” “1.2.840.10008.5.1.4.1.1.3” “1.2.840.10008.5.1.4.1.1.6.1” “1.2.840.10008.5.1.4.1.1.6” or “1.2.840.10008.5.1.4.1.1.7” |
| SOP Instance UID | (0008,0018) | 1 | Uniquely generated by the equipment |
| Specific Character Set | (0008,0005) | 1C | Set to “ISO_IR 100” if extended characters are used. Image Read: images using other extended character set than “ISO_IR 100” are rejected. |
| Instance Creation Date | (0008,0012) | 3 | Not used |
| Instance Creation Time | (0008,0013) | 3 | Not used |
| Instance Creator UID | (0008,0014) | 3 | Not used |
| Instance Number | (0020,0013) | 3 | Not used |

4.5.7 US Modules

This Section describes US Series, Equipment, and Image Modules. These Modules contain attributes that are specific to US Image IOD.

4.5.7.1 US Region Calibration Module

US Region Calibration Module is used to describe multiple regions. Note: if a multi-frame image has been acquired with different calibration, the US Region Calibration Module will not be used.

TABLE 4.5-12
US REGION CALIBRATION MODULE ATTRIBUTES

| Attribute Name | Tag | Type | Attribute Description |
|---------------------------------|-------------|------|---|
| Sequence of Ultrasound Regions | (0018,6011) | 1 | Object contains 0 or 1 regions |
| >Region Location Min x_0 | (0018,6018) | 1 | Value is 0 |
| >Region Location Min y_0 | (0018,601A) | 1 | Value is 0 |
| >Region Location Max x_1 | (0018,601C) | 1 | Value is image width-1. |
| >Region Location Max y_1 | (0018,601E) | 1 | Value is image height-1 |
| >Physical Units X Direction | (0018,6024) | 1 | Enumerated Values supported: 0003H cm 0004H seconds |
| >Physical Units Y Direction | (0018,6026) | 1 | Enumerated Values supported: 0003H cm 0004H seconds 0007H cm/sec |
| >Physical Delta X | (0018,602C) | 1 | Varies with scanning mode |
| >Physical Delta Y | (0018,602E) | 1 | Varies with scanning mode |
| >Reference Pixel x_0 | (0018,6020) | 3 | Varies with scanning mode |
| >Reference Pixel y_0 | (0018,6022) | 3 | Varies with scanning mode |
| >Ref. Pixel Physical Value X | (0018,6028) | 3 | Varies with scanning mode |
| >Ref. Pixel Physical Value Y | (0018,602A) | 3 | Varies with scanning mode |
| >Region Spatial Format | (0018,6012) | 1 | Supported. The spatial organization of the data within the region. |
| >Region Data Type | (0018,6014) | 1 | Supported. The type of data within the region. |
| >Region Flags | (0018,6016) | 1 | Bit 0: 0 = Opaque Bit 1: 0 = Not Protected because there may be other regions within the image Bit 2 : 0 = Velocity |
| >Pixel Component Organization | (0018,6044) | 1C | Pixel component calibration data does not exist for any region |
| >Pixel Component Mask | (0018,6046) | 1C | Not used |
| >Pixel Component Range Start | (0018,6048) | 1C | Not used |
| >Pixel Component Range Stop | (0018,604A) | 1C | Not used |
| >Pixel Component Physical Units | (0018,604C) | 1C | Not used |
| >Pixel Component Data Type | (0018,604E) | 1C | Not used |
| >Number of Table Break Points | (0018,6050) | 1C | Not used |
| >Table of X Break Points | (0018,6052) | 1C | Not used |
| >Table of Y Break Points | (0018,6054) | 1C | Not used |
| >Number of Table Entries | (0018,6056) | 1C | Not used |
| >Table of Pixel Values | (0018,6058) | 1C | Not used |

| Attribute Name | Tag | Type | Attribute Description |
|-----------------------------------|-------------|------|-----------------------|
| >Table of Parameter Values | (0018,605A) | 1C | Not used |
| >Transducer Frequency | (0018,6030) | 3 | Supported |
| >Pulse Repetition Frequency | (0018,6032) | 3 | Supported |
| >Doppler Correction Angle | (0018,6034) | 3 | Not used |
| >Steering Angle | (0018,6036) | 3 | Not used |
| >Doppler Sample Volume X Position | (0018,6038) | 3 | Not used |
| >Doppler Sample Volume Y Position | (0018,603A) | 3 | Not used |
| >TM-Line Position x_0 | (0018,603C) | 3 | Not used |
| >TM-Line Position y_0 | (0018,603E) | 3 | Not used |
| >TM-Line Position x_1 | (0018,6040) | 3 | Not used |
| >TM-Line Position y_1 | (0018,6042) | 3 | Not used |

4.5.7.2 US Image Module

This section specifies the attributes that describe ultrasound images.

TABLE 4.5-13
US IMAGE MODULE ATTRIBUTES

| Attribute Name | Tag | Type | Attribute Description |
|-------------------------------|-------------|------|--|
| Samples Per Pixel | (0028,0002) | 1 | Value of '1' if Photometric Interpretation element value has value 'MONOCHROME2' Value of '3' when Photometric Interpretation element value has value 'RGB' or 'YBR_FULL' or 'YBR_FULL_422' |
| Photometric Interpretation | (0028,0004) | 1 | Defined Values used: "MONOCHROME2", "RGB", "YBR_FULL" or "YBR_FULL_422" |
| Bits Allocated | (0028,0100) | 1 | Value always = 0008H |
| Bits Stored | (0028,0101) | 1 | Value always = 0008H |
| High Bit | (0028,0102) | 1 | Value always = 0007H |
| Planar Configuration | (0028,0006) | 1 | Enumerated value 0000H, color-by-pixel, if Photometric Interpretation element value has value 'RGB' or if image is JPEG compressed. Enumerated value 0001H, color-by-plane if image is RLE compressed. |
| Pixel Representation | (0028,0103) | 1 | Always 0000H = unsigned integer. |
| Frame Increment Pointer | (0028,0009) | 1C | Export: Is set to Frame Time (0018,1063) or Frame Time Vector (0018,1065) if the image is multiframe IOD, Not used if the image is a single frame IOD. |
| Image Type | (0008,0008) | 2 | The first two values contain "ORIGINAL\PRIMARY" or "DERIVED\PRIMARY". Value 4 is a description of the mode. Values 5 and 6 may be used for private data. |
| Lossy Image Compression | (0028,2110) | 1C | Set to 01 if image is compressed using JPEG Baseline compression. |
| Number of Stages | (0008,2124) | 2C | Number of stages in stress protocol. Sent if image is acquired in a stress test. |
| Number of Views in Stage | (0008,212A) | 2C | Number of views in this stage of a stress protocol. Sent if image is acquired in a stress test. |
| Ultrasound Color Data Present | (0028,0014) | 3 | Supported |
| Referenced Overlay Sequence | (0008,1130) | 3 | Not used |
| >Referenced SOP Class UID | (0008,1150) | 1C | Not used |
| >Referenced SOP Instance UID | (0008,1155) | 1C | Not used |
| Referenced Curve Sequence | (0008,1145) | 3 | Not used |

| Attribute Name | Tag | Type | Attribute Description |
|---|-------------|------|--|
| >Referenced SOP Class UID | (0008,1150) | 1C | Not used |
| >Referenced SOP Instance UID | (0008,1155) | 1C | Not used |
| Stage Name | (0008,2120) | 3 | Name of stage of stress test. Sent if image is acquired in a stress test. The name is defined in the User Interface. |
| Stage Number | (0008,2122) | 3 | Number of stage, starting at one. Sent if image is acquired in a stress test. |
| View Name | (0008,2127) | 3 | Name of view of stress test. Sent if image is acquired in a stress test. The name is defined in the User Interface. |
| View Number | (0008,2128) | 3 | Number of view, starting at one. Sent if image is acquired in a stress test. |
| Number of Event Timers | (0008,2129) | 3 | Not used |
| Event Elapsed Time(s) | (0008,2130) | 3 | Not used |
| Event Timer Name(s) | (0008,2132) | 3 | Not used |
| Anatomic Region Sequence | (0008,2218) | 3 | Not used |
| >Include 'Code Sequence Macro' | | | |
| >Anatomic Region Modifier Sequence | (0008,2220) | 3 | Not used |
| >>Include 'Code Sequence Macro' | | | |
| Primary Anatomic Structure Sequence | (0008,2228) | 3 | Not used |
| >Include 'Code Sequence Macro' | | | |
| >Primary Anatomic Structure Modifier Sequence | (0008,2230) | 3 | Not used |
| >>Include 'Code Sequence Macro' | | | |
| Transducer Position Sequence | (0008,2240) | 3 | Not used |
| >Include 'Code Sequence Macro' | | | |
| >Transducer Position Modifier Sequence | (0008,2242) | 3 | Not used |
| >>Include 'Code Sequence Macro' | | | |
| Transducer Orientation Sequence | (0008,2244) | 3 | Not used |
| >Include 'Code Sequence Macro' | | | |
| >Transducer Orientation Modifier Sequence | (0008,2246) | 3 | Not used |
| >>Include 'Code Sequence Macro' | | | |

| Attribute Name | Tag | Type | Attribute Description |
|-----------------------------------|-------------|------|-----------------------|
| Trigger Time | (0018,1060) | 3 | Not used |
| Nominal Interval | (0018,1062) | 3 | Not used |
| Beat Rejection Flag | (0018,1080) | 3 | Not used |
| Low R-R Value | (0018,1081) | 3 | Not used |
| High R-R Value | (0018,1082) | 3 | Not used |
| Heart Rate | (0018,1088) | 3 | Set to heart rate |
| Output Power | (0018,5000) | 3 | Not used |
| Transducer Data | (0018,5010) | 3 | Not used |
| Transducer Type | (0018,6031) | 3 | Not used |
| Focus Depth | (0018,5012) | 3 | Not used |
| Preprocessing Function | (0018,5020) | 3 | Not used |
| Mechanical Index | (0018,5022) | 3 | Not used |
| Bone Thermal Index, | (0018,5024) | 3 | Not used |
| Cranial Thermal Index | (0018,5026) | 3 | Not used |
| Soft Tissue Thermal Index | (0018,5027) | 3 | Not used |
| Soft Tissue-focus Thermal Index | (0018,5028) | 3 | Not used |
| Soft Tissue-surface Thermal Index | (0018,5029) | 3 | Not used |
| Depth of Scan Field | (0018,5050) | 3 | Not used |
| Image Transformation Matrix | (0018,5210) | 3 | Not used |
| Image Translation Vector | (0018,5212) | 3 | Not used |
| Overlay Subtype | (60xx,0045) | 3 | Not used |

5. ULTRASOUND MULTIFRAME (US MF) INFORMATION OBJECT IMPLEMENTATION

5.1 INTRODUCTION

This section specifies the use of the DICOM US Multi-frame Image IOD to represent the information included in US images produced by this implementation. Corresponding attributes are conveyed using the module construct. The contents of this section are:

5.2 - IOD Implementation

5.3 - IOD Entity-Relationship Model

5.4 - IOD Module Table

5.5 - IOD Module Definition

5.2 US MF IOD IMPLEMENTATION

This section defines the implementation of US Multi-Frame image information object.

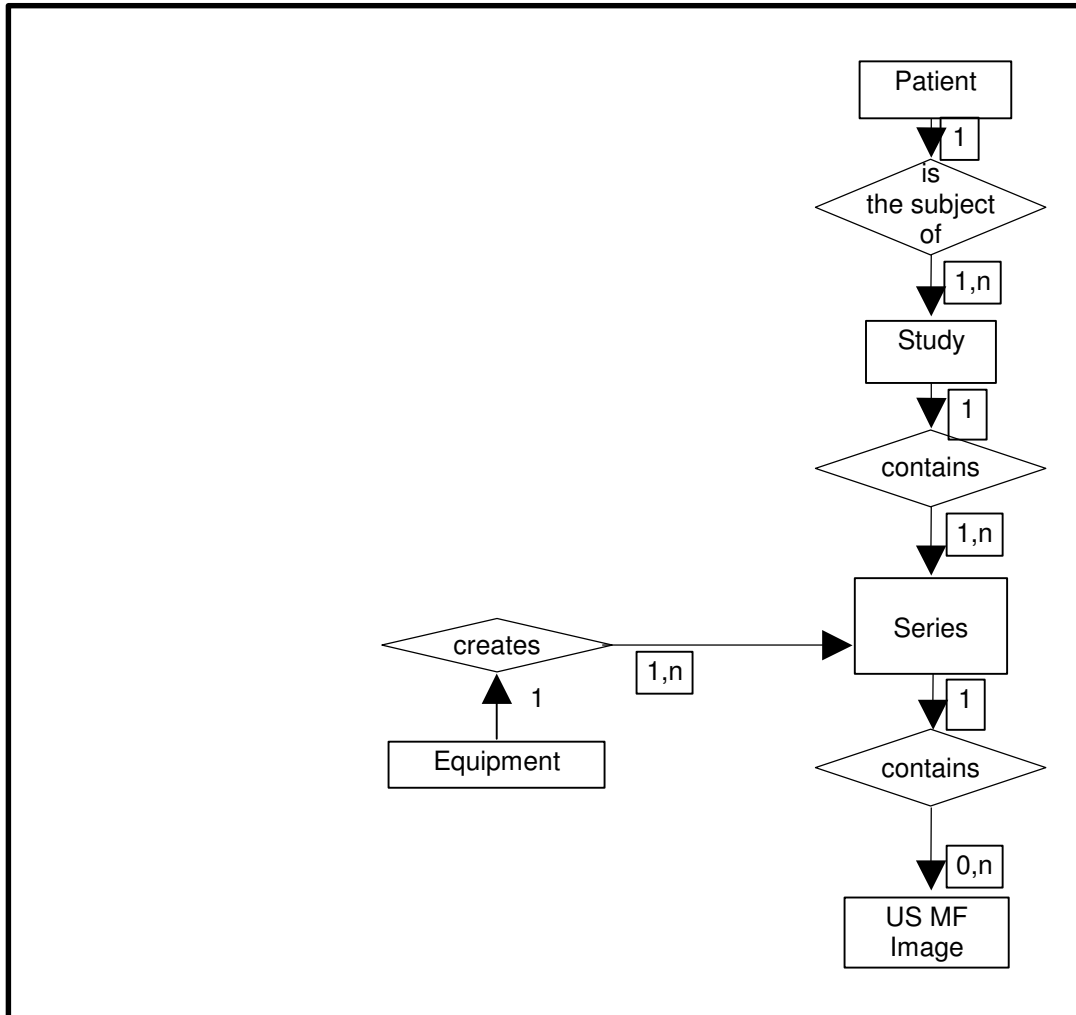
5.3 US MF ENTITY-RELATIONSHIP MODEL

The Entity-Relationship diagram for the US MF Image interoperability schema is shown in Illustration 5.3-1. In this figure, the following diagrammatic convention is established to represent the information organization:

- each entity is represented by a rectangular box
- each relationship is represented by a diamond shaped box.
- the fact that a relationship exists between two entities is depicted by lines connecting the corresponding entity boxes to the relationship boxes.

The relationships are fully defined with the maximum number of possible entities in the relationship shown. In other words, the relationship between Series and Image can have up to n Images per Series, but the Patient to Study relationship has 1 Study for each Patient (a Patient can have more than one Study on the system, however each Study will contain all of the information pertaining to that Patient).

ILLUSTRATION 5.3-1
 US MULTIFRAME IMAGE ENTITY RELATIONSHIP DIAGRAM



5.3.1 Entity Descriptions

Please refer to DICOM Standard Part 3 (Information Object Definitions) for a description of each of the entities contained within the US Multi-Frame Information Object.

5.3.2 EchoPAC PC Mapping of DICOM entities

TABLE 5.3-1
 MAPPING OF DICOM ENTITIES TO ECHOPAC PC ENTITIES

| DICOM | EchoPAC PC Entity |
|---------|-------------------|
| Patient | Patient |
| Study | Exam |
| Series | Exam |
| Image | Image |
| Curve | Not used |

5.4 IOD MODULE TABLE

Within an entity of the DICOM US Multi-Frame IOD, attributes are grouped into related set of attributes. A set of related attributes is termed a module. A module facilitates the understanding of the semantics concerning the attributes and how the attributes are related with each other. A module grouping does not infer any encoding of information into datasets.

Table 5.4-1 identifies the defined modules within the entities, which comprise the DICOM US Multi-Frame IOD. Modules are identified by Module Name.

See DICOM Part 3 for a complete definition of the entities, modules, and attributes.

TABLE 5.4-1
US MULTI-FRAME IOD MODULES

| Entity Name | Module Name | Reference |
|--------------------|----------------------------|-------------------|
| Patient | Patient | 4.5.1.1 |
| Study | General Study | 4.5.2.1 |
| | Patient Study | 4.5.2.2 |
| Series | General Series | 4.5.3.1 |
| | Frame of Reference | Not used |
| Frame of Reference | US Frame of Reference | Not used |
| | Equipment | General Equipment |
| Image | General Image | 4.5.5.1 |
| | Image Pixel | 4.5.5.2 |
| | Contrast/Bolus | 4.5.5.3 |
| | Cine | 5.5.1.1 |
| | Multi-frame | 5.5.1.2 |
| | Palette Color Lookup Table | 4.5.5.4 |
| | US Region Calibration | 4.5.7.1 |
| | US Image | 4.5.7.2 |
| | Overlay Plane | Not used |
| | VOI LUT | 4.5.5.5 |
| | SOP Common | 4.5.6.1 |
| Curve | Not used | |

5.5 INFORMATION MODULE DEFINITIONS

Please refer to DICOM Standard Part 3 (Information Object Definitions) for a description of each of the entities and modules contained within the US Multi-Frame Information Object.

The following modules are included to convey Enumerated Values, Defined Terms, and Optional Attributes supported. Type 1 & Type 2 Attributes are also included for completeness and to define what values they may take and where these values are obtained. It should be noted that they are the same ones as defined in the DICOM Standard Part 3 (Information Object Definitions).

5.5.1 Common Image Modules

The following Image IE Modules are common to all Composite Image IODs which reference the Image IE.

5.5.1.1 Cine Module

TABLE 5.5-2
CINE MODULE ATTRIBUTES

| Attribute Name | Tag | Type | Attribute Description |
|--------------------------------|-------------|------|--|
| Frame Time | (0018,1063) | 1C | Is set to the interframe time |
| Frame Time Vector | (0018,1065) | 1C | Supported. Reading: Average value is set to interframe time |
| Start Trim | (0008,2142) | 3 | Supported |
| Stop Trim | (0008,2143) | 3 | Supported |
| Recommended Display Frame Rate | (0008,2144) | 3 | Supported |
| Cine Rate | (0018,0040) | 3 | Supported |
| Frame Delay | (0018,1066) | 3 | Supported |
| Effective Duration | (0018,0072) | 3 | Supported |
| Actual Frame Duration | (0018,1242) | 3 | Supported |
| Preferred Playback Sequencing | (0018,1244) | 3 | Supported |

5.5.1.2 Multi-frame Module

TABLE 5.5-3
MULTI-FRAME MODULE ATTRIBUTES

| Attribute Name | Tag | Type | Attribute Description |
|-------------------------|-------------|------|---|
| Number of Frames | (0028,0008) | 1 | Is set to the number of frames in image |
| Frame Increment Pointer | (0028,0009) | 1 | Is set to Frame Time (0018,1063) or Frame Time Vector (0018,1065) |

6. SC INFORMATION OBJECT IMPLEMENTATION

6.1 INTRODUCTION

This section specifies the use of the DICOM SC Image IOD to represent the information included in SC images produced by this implementation. Corresponding attributes are conveyed using the module construct. The contents of this section are:

6.2 - IOD Implementation

6.3 - IOD Entity-Relationship Model

6.4 - IOD Module Table

6.5 - IOD Module Definition

6.2 SC IOD IMPLEMENTATION

This section defines the implementation of SC image information object.

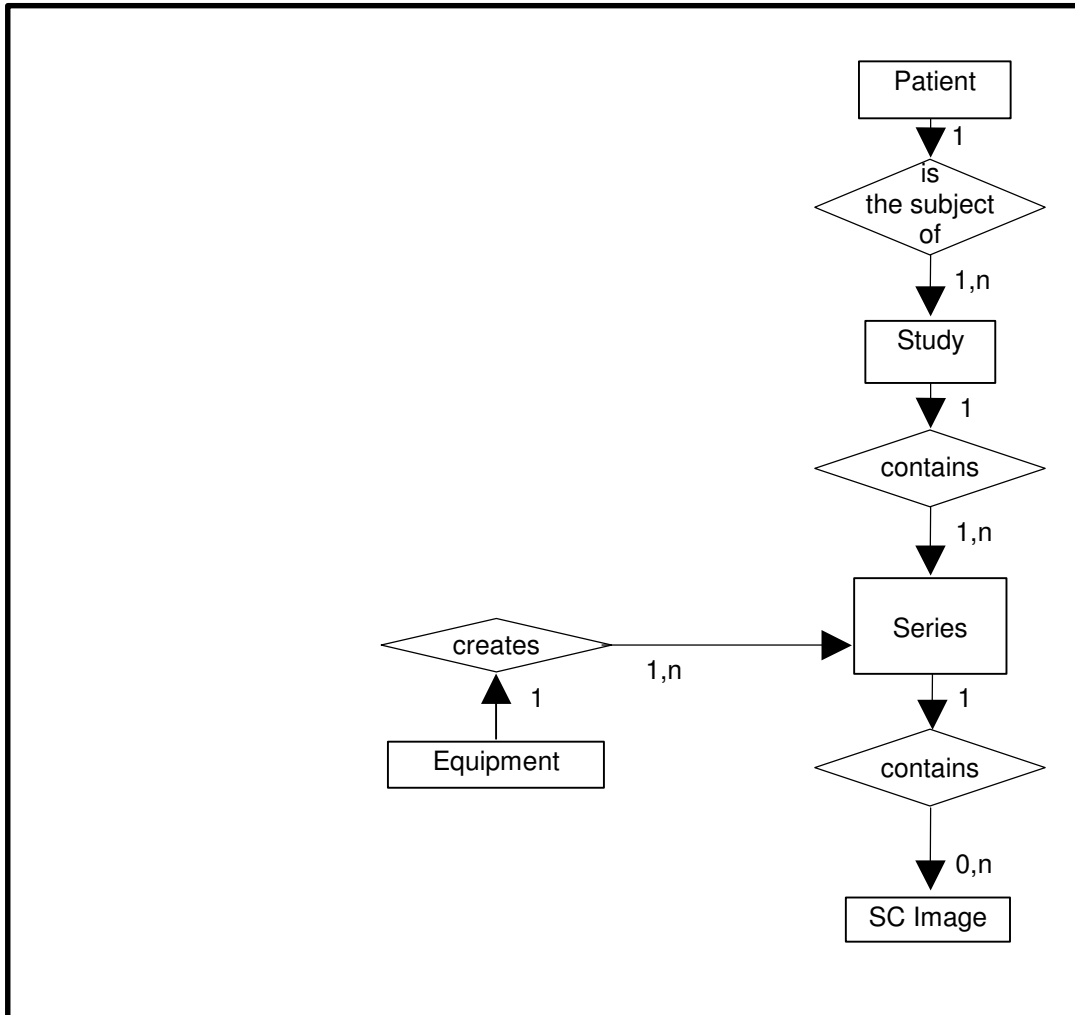
6.3 SC ENTITY-RELATIONSHIP MODEL

The Entity-Relationship diagram for the SC Image interoperability schema is shown in Illustration 6.3-1. In this figure, the following diagrammatic convention is established to represent the information organization:

- each entity is represented by a rectangular box
- each relationship is represented by a diamond shaped box.
- the fact that a relationship exists between two entities is depicted by lines connecting the corresponding entity boxes to the relationship boxes.

The relationships are fully defined with the maximum number of possible entities in the relationship shown. In other words, the relationship between Series and Image can have up to n Images per Series, but the Patient to Study relationship has 1 Study for each Patient (a Patient can have more than one Study on the system, however each Study will contain all of the information pertaining to that Patient).

ILLUSTRATION 6.3-1
 SC IMAGE ENTITY RELATIONSHIP DIAGRAM



6.3.1 Entity Descriptions

Please refer to DICOM Standard Part 3 (Information Object Definitions) for a description of each of the entities contained within the SC Information Object.

6.3.2 EchoPAC PC Mapping of DICOM Entities

TABLE 6.3-1
 MAPPING OF DICOM ENTITIES TO ECHOPAC PC ENTITIES

| DICOM | EchoPAC PC Entity |
|---------|-------------------|
| Patient | Patient |
| Study | Exam |
| Series | Exam |
| Image | Image |
| Frame | Not Applicable |

6.4 IOD MODULE TABLE

Within an entity of the DICOM SC IOD, attributes are grouped into related set of attributes. A set of related attributes is termed a module. A module facilitates the understanding of the semantics concerning the attributes and how the attributes are related with each other. A module grouping does not infer any encoding of information into datasets.

Table 6.4-1 identifies the defined modules within the entities, which comprise the DICOM SC IOD. Modules are identified by Module Name.

See DICOM Part 3 for a complete definition of the entities, modules, and attributes.

TABLE 6.4-1
SC IMAGE IOD MODULES

| Entity Name | Module Name | Reference |
|-------------|----------------|-------------------|
| Patient | Patient | 4.5.1.1 |
| Study | General Study | 4.5.2.1 |
| | Patient Study | 4.5.2.2 |
| Series | General Series | 4.5.3.1 |
| | Equipment | General Equipment |
| Image | SC Equipment | 6.5.1.1 |
| | General Image | 4.5.5.1 |
| Image | Image Pixel | 4.5.5.2 |
| | SC Image | 6.5.1.2 |
| | Overlay Plane | Not used |
| | Modality LUT | Not used |
| | VOI LUT | 4.5.5.5 |
| | SOP Common | 4.5.6.1 |

6.5 INFORMATION MODULE DEFINITIONS

Please refer to DICOM Standard Part 3 (Information Object Definitions) for a description of each of the entities and modules contained within the SC Information Object.

The following modules are included to convey Enumerated Values, Defined Terms, and Optional Attributes supported. Type 1 & Type 2 Attributes are also included for completeness and to define what values they may take and where these values are obtained. It should be noted that they are the same ones as defined in the DICOM Standard Part 3 (Information Object Definitions).

6.5.1 SC Modules

This Section describes SC Equipment, and Image Modules. These Modules contain attributes that are specific to SC Image IOD.

6.5.1.1 SC Equipment Module

This Module describes equipment used to convert images into a DICOM format.

TABLE 6.5-2
SC IMAGE EQUIPMENT MODULE ATTRIBUTES

| Attribute Name | Tag | Type | Attribute Description |
|--|-------------|------|--|
| Conversion Type | (0008,0064) | 1 | Set to WSD |
| Modality | (0008,0060) | 3 | Defined Value "US" used. |
| Secondary Capture Device ID | (0018,1010) | 3 | Defined Value "EchoPAC PC" or "EchoPAC PC SW-Only" |
| Secondary Capture Device Manufacturer | (0018,1016) | 3 | Implementation defined string "GE Vingmed Ultrasound" |
| Secondary Capture Device Manufacturer's Model Name | (0018,1018) | 3 | Implementation defined string "EchoPAC PC" or "EchoPAC PC SW-Only" |
| Secondary Capture Device Software Version | (0018,1019) | 3 | Is set to EchoPAC PC software version |
| Video Image Format Acquired | (0018,1022) | 3 | Not used |
| Digital Image Format Acquired | (0018,1023) | 3 | Not used |

6.5.1.2 SC Image Module

The table in this Section contains IOD attributes that describe SC images.

TABLE 6.5-3
SC IMAGE MODULE ATTRIBUTES

| Attribute Name | Tag | Type | Attribute Description |
|---------------------------|-------------|------|-----------------------|
| Date of Secondary Capture | (0018,1012) | 3 | Image capture date |
| Time of Secondary Capture | (0018,1014) | 3 | Image capture time |

7. BASIC DIRECTORY INFORMATION OBJECT IMPLEMENTATION

7.1 INTRODUCTION

This section specifies the use of the DICOM Basic Directory IOD to represent the information included in directories produced by this implementation. Corresponding attributes are conveyed using the module construct. The contents of this section are:

7.2 - IOD Implementation

7.3 - IOD Entity-Relationship Model

7.4- IOD Module Table

7.5 - IOD Module Definition

7.2 BASIC DIRECTORY IOD IMPLEMENTATION

This section defines the implementation of Basic Directory information object.

7.3 BASIC DIRECTORY ENTITY-RELATIONSHIP MODEL

The Entity-Relationship diagram for the Basic Directory interoperability schema is shown in Illustration 7.3-1. In this figure, the following diagrammatic convention is established to represent the information organization:

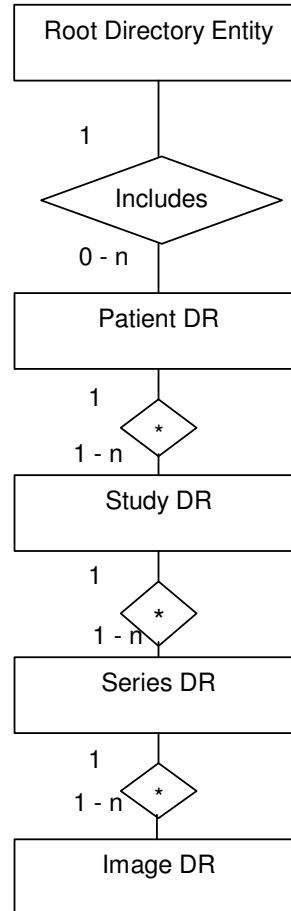
- each entity is represented by a rectangular box
- each relationship is represented by a diamond shaped box
- the fact that a relationship exists between two entities is depicted by lines connecting the corresponding entity boxes to the relationship boxes.

7.3.1 EchoPAC PC Mapping of DICOM entities

TABLE 7.3-1
MAPPING OF DICOM ENTITIES TO ECHOPAC PC ENTITIES

| DICOM | EchoPAC PC |
|--------------|-------------------|
| Patient | Patient |
| Study | Exam |
| Series | Exam |
| Image | Image |

ILLUSTRATION 7.3-1
BASIC DIRECTORY ENTITY RELATIONSHIP DIAGRAM



7.4 IOD MODULE TABLE

Within an entity of the Basic Directory IOD, attributes are grouped into related set of attributes. A set of related attributes is termed a module. A module facilitates the understanding of the semantics concerning the attributes and how the attributes are related with each other. A module grouping does not infer any encoding of information into datasets.

Table 7.4-1 identifies the defined modules within the entities, which comprise the Basic Directory IOD. Modules are identified by Module Name.

See DICOM Part 3 for a complete definition of the entities, modules, and attributes.

TABLE 7.4-1
BASIC DIRECTORY IOD MODULES

| Entity Name | Module Name | Reference |
|-------------------------|-------------------------|-----------|
| File Set Identification | File Set Identification | 7.5.1.1 |
| Directory Information | Directory Information | 7.5.2.1 |

The Directory Information Module is created when initializing the media. If it already exists, the existing information is not changed regarding patient, study, series or image/result data.

An existing Directory Information Module may have been obtained from application entities using removable media. These instances are external to this conformance claim and the origin of the SOP instances is outside the scope of this claim.

7.5 INFORMATION MODULE DEFINITIONS

Please refer to DICOM Standard Part 3 (Information Object Definitions) for a description of each of the entities and modules contained within the Basic Directory Information Object.

The following modules are included to convey Enumerated Values, Defined Terms, and Optional Attributes supported. Type 1 & Type 2 Attributes are also included for completeness and to define what values they may take and where these values are obtained. It should be noted that they are the same ones as defined in the DICOM Standard Part 3 (Information Object Definitions).

7.5.1 Common File Set identification Modules

7.5.1.1 File Set identification Module

TABLE 7.5-1
FILE-SET IDENTIFICATION MODULE

| Attribute Name | Tag | Type | Attribute Description |
|--|-------------|------|-----------------------|
| File-set ID | (0004,1130) | 2 | Has NULL value |
| File-set Descriptor File ID | (0004,1141) | 3 | Not used |
| Specific Character Set of File-set Descriptor File | (0004,1142) | 1C | Not used |

7.5.2 Common Directory Information Modules

7.5.2.1 Directory Information Module

TABLE 7.5-2
DIRECTORY INFORMATION MODULE

| Attribute Name | Tag | Type | Attribute Description |
|---|-------------|------|-----------------------|
| Offset of the First Directory Record of the Root Directory Entity | (0004,1200) | 1 | Is set |
| Offset of the Last Directory Record of the Root Directory Entity | (0004,1202) | 1 | Is set |

| Attribute Name | Tag | Type | Attribute Description |
|--|-------------|------|--|
| File-set Consistency Flag | (0004,1212) | 1 | FSC/FSU: Has the value 0000H: no known inconsistencies |
| Directory Record Sequence | (0004,1220) | 2 | Is created by FSC |
| >Offset of the Next Directory Record | (0004,1400) | 1C | Is set |
| >Record In-use Flag | (0004,1410) | 1C | FSC/FS: Is set to FFFFH FSR: A value of 0000H: imply skipping this record Read: A value of 0000H: the record is skipped |
| >Offset of Referenced Lower-Level Directory Entity | (0004,1420) | 1C | Is set |
| >Directory Record Type | (0004,1430) | 1C | The values support by FSC and FSU are PATIENT STUDY SERIES IMAGE |
| >Private Record UID | (0004,1432) | 1C | Not used |
| >Referenced File ID | (0004,1500) | 1C | Is set if Directory Record Type is IMAGE Contains the file path consisting of 5 elements: 1. "GEMS_IMG" 2. Month of exam 3. Day of exam 4. Patient initials and time of exam 5. Time stamp |
| >MRDR Directory Record Offset | (0004,1504) | 1C | A MRDR is not created by an FSC or FSU. |
| >Referenced SOP Class UID in File | (0004,1510) | 1C | Is set to the SOP class UID in File |
| >Referenced SOP Instance UID in File | (0004,1511) | 1C | Is set to the SOP instance UID in File |
| >Referenced Transfer Syntax UID in File | (0004,1512) | 1C | Is set to the Transfer Syntax UID in File |
| >Record Selection Keys | | | See 7.5.3. |

7.5.3 Definition of Specific Directory Records

7.5.3.1 Patient Directory Record Definition

TABLE 7.5-3
PATIENT KEYS

| Key | Tag | Type | Attribute Description |
|-----|-----|------|-----------------------|
|-----|-----|------|-----------------------|

| Key | Tag | Type | Attribute Description |
|------------------------------|-------------|------|--|
| Specific Character Set | (0008,0005) | 1C | Is filled in by FSC and FSU as in chapter 4, 5, 6 and 7. |
| Patient's Name | (0010,0010) | 2 | Is filled in by FSC and FSU as in chapter 4, 5, 6 and 7. |
| Patient ID | (0010,0020) | 1 | Is filled in by FSC and FSU as in chapter 4, 5, 6 and 7. If empty, a Patient Id is created by the equipment. |
| Patient's Birth Date | (0010,0030) | 3 | Is filled in by FSC and FSU as in chapter 4, 5, 6 and 7. |
| Patient's Sex | (0010,0040) | 3 | Is filled in by FSC and FSU as in chapter 4, 5, 6 and 7. |
| Referenced Patient Sequence | (0008,1120) | 3 | Is filled in by FSC and FSU as in chapter 4, 5, 6 and 7. |
| >Referenced SOP Class UID | (0008,1150) | 1C | Is filled in by FSC and FSU as in chapter 4, 5, 6 and 7. |
| >Referenced SOP Instance UID | (0008,1155) | 1C | Is filled in by FSC and FSU as in chapter 4, 5, 6 and 7. |
| Patient's Birth Time | (0010,0032) | 3 | Is filled in by FSC and FSU as in chapter 4, 5, 6 and 7. |
| Other Patient Ids | (0010,1000) | 3 | Is filled in by FSC and FSU as in chapter 4, 5, 6 and 7. |
| Other Patient Names | (0010,1001) | 3 | Is filled in by FSC and FSU as in chapter 4, 5, 6 and 7. |
| Ethnic Group | (0010,2160) | 3 | Is filled in by FSC and FSU as in chapter 4, 5, 6 and 7. |
| Patient Comments | (0010,4000) | 3 | Is filled in by FSC and FSU as in chapter 4, 5, 6 and 7. |

7.5.3.2 Study Directory Record Definition

TABLE 7.5-4
STUDY KEYS

| Key | Tag | Type | Attribute Description |
|----------------------------|-------------|------|--|
| Specific Character Set | (0008,0005) | 1C | Is filled in by FSC and FSU as in chapter 4, 5, 6 and 7. |
| Study Instance UID | (0020,000D) | 1C | Is filled in by FSC and FSU as in chapter 4, 5, 6 and 7. |
| Study Date | (0008,0020) | 1 | Is filled in by FSC and FSU as in chapter 4, 5, 6 and 7. If empty, a Study Date is created by the equipment. |
| Study Time | (0008,0030) | 1 | Is filled in by FSC and FSU as in chapter 4, 5, 6 and 7. If empty, a Study Time is created by the equipment. |
| Referring Physician's Name | (0008,0090) | 2 | Is filled in by FSC and FSU as in chapter 4, 5, 6 and 7. |

| Key | Tag | Type | Attribute Description |
|------------------------------------|-------------|------|--|
| Study ID | (0020,0010) | 1 | Is filled in by FSC and FSU as in chapter 4, 5, 6 and 7. If empty, a Study Id is created by the equipment. |
| Accession Number | (0008,0050) | 2 | Is filled in by FSC and FSU as in chapter 4, 5, 6 and 7. |
| Study Description | (0008,1030) | 2 | Is filled in by FSC and FSU as in chapter 4, 5, 6 and 7. |
| Physician(s) of Record | (0008,1048) | 3 | Is filled in by FSC and FSU as in chapter 4, 5, 6 and 7. |
| Name of Physician(s) Reading Study | (0008,1060) | 3 | Is filled in by FSC and FSU as in chapter 4, 5, 6 and 7. |
| Referenced Study Sequence | (0008,1110) | 3 | Is filled in by FSC and FSU as in chapter 4, 5, 6 and 7. |
| >Referenced SOP Class UID | (0008,1150) | 1C | Is filled in by FSC and FSU as in chapter 4, 5, 6 and 7. |
| >Referenced SOP Instance UID | (0008,1155) | 1C | Is filled in by FSC and FSU as in chapter 4, 5, 6 and 7. |
| Admitting Diagnoses Description | (0008,1080) | 3 | Is filled in by FSC and FSU as in chapter 4, 5, 6 and 7. |
| Patient's Age | (0010,1010) | 3 | Is filled in by FSC and FSU as in chapter 4, 5, 6 and 7. |
| Patient's Size | (0010,1020) | 3 | Is filled in by FSC and FSU as in chapter 4, 5, 6 and 7. |
| Patient's Weight | (0010,1030) | 3 | Is filled in by FSC and FSU as in chapter 4, 5, 6 and 7. |
| Occupation | (0010,2180) | 3 | Is filled in by FSC and FSU as in chapter 4, 5, 6 and 7. |
| Additional Patient's History | (0010,21B0) | 3 | Is filled in by FSC and FSU as in chapter 4, 5, 6 and 7. |

7.5.3.3 Series Directory Record Definition

TABLE 7.5-5
SERIES KEYS

| Key | Tag | Type | Attribute Description |
|------------------------|-------------|------|---|
| Specific Character Set | (0008,0005) | 1C | Is filled in by FSC or FSU as contained in the image message, if one of the tags contains extended characters |
| Modality | (0008,0060) | 1 | Is filled in by FSC and FSU as in chapter 4, 5, 6 and 7. |
| Series Instance UID | (0020,000E) | 1 | Is filled in by FSC and FSU as in chapter 4, 5, 6 and 7. |
| Series Number | (0020,0011) | 1 | Is filled in by FSC and FSU as in chapter 4, 5, 6 and 7. If empty, a Series Number is created by the equipment. |

| Key | Tag | Type | Attribute Description |
|--|-------------|------|---|
| Icon Image Sequence | (0088,0200) | 3 | Not used. |
| Series Date | (0008,0021) | 3 | Is filled in by FSC and FSU as in chapter 4, 5, 6 and 7 if instance is IMAGE. |
| Series Time | (0008,0031) | 3 | Is filled in by FSC and FSU as in chapter 4, 5, 6 and 7 if instance is IMAGE. |
| Performing Physicians' Name | (0008,1050) | 3 | Is filled in by FSC and FSU as in chapter 4, 5, 6 and 7 if instance is IMAGE. |
| Protocol Name | (0018,1030) | 3 | Is filled in by FSC and FSU as in chapter 4, 5, 6 and 7 if instance is IMAGE. |
| Series Description | (0008,103E) | 3 | Is filled in by FSC and FSU as in chapter 4, 5, 6 and 7 if instance is IMAGE. |
| Operator's Name | (0008,1070) | 3 | Is filled in by FSC and FSU as in chapter 4, 5, 6 and 7 if instance is IMAGE. |
| Referenced Performed Procedure Step Sequence | (0008,1111) | 3 | Is filled in by FSC and FSU as in chapter 4, 5, 6 and 7. |
| >Referenced SOP Class UID | (0008,1150) | 1C | Is filled in by FSC and FSU as in chapter 4, 5, 6 and 7. |
| >Referenced SOP Instance UID | (0008,1155) | 1C | Is filled in by FSC and FSU as in chapter 4, 5, 6 and 7. |
| Request Attributes Sequence | (0040,0275) | 3 | Is filled in by FSC and FSU as in chapter 4, 5, 6 and 7 if instance is IMAGE. |
| >Requested Procedure ID | (0040,1001) | 1C | Is filled in by FSC and FSU as in chapter 4, 5, 6 and 7 if instance is IMAGE. |
| >Scheduled Procedure Step ID | (0040,0009) | 1C | Is filled in by FSC and FSU as in chapter 4, 5, 6 and 7 if instance is IMAGE. |
| >Scheduled Procedure Step Description | (0040,0007) | 3 | Is filled in by FSC and FSU as in chapter 4, 5, 6 and 7 if instance is IMAGE. |
| >Scheduled Protocol Code Sequence | (0040,0008) | 3 | Is filled in by FSC and FSU as in chapter 4, 5, 6 and 7 if instance is IMAGE. |
| >>Include 'Code Sequence Macro' | | | Is filled in by FSC and FSU as in chapter 4, 5, 6 and 7 if instance is IMAGE. |
| Performed Procedure Step ID | (0040,0253) | 3 | Is filled in by FSC and FSU as in chapter 4, 5, 6 and 7 if instance is IMAGE. |

| Key | Tag | Type | Attribute Description |
|--------------------------------------|-------------|------|---|
| Performed Procedure Step Start Date | (0040,0244) | 3 | Is filled in by FSC and FSU as in chapter 4, 5, 6 and 7 if instance is IMAGE. |
| Performed Procedure Step Start Time | (0040,0245) | 3 | Is filled in by FSC and FSU as in chapter 4, 5, 6 and 7 if instance is IMAGE. |
| Performed Procedure Step Description | (0040,0254) | 3 | Is filled in by FSC and FSU as in chapter 4, 5, 6 and 7 if instance is IMAGE. |
| Performed Protocol Code Sequence | (0040,0260) | 3 | Is filled in by FSC and FSU as in chapter 4, 5, 6 and 7 if instance is IMAGE. |
| >Include 'Code Sequence Macro' | | | |
| Manufacturer | (0008,0070) | 2 | Is filled in by FSC and FSU as in chapter 4, 5, 6 and 7. |
| Institution Name | (0008,0080) | 3 | Is filled in by FSC and FSU as in chapter 4, 5, 6 and 7. |
| Station Name | (0008,1010) | 3 | Is filled in by FSC and FSU as in chapter 4, 5, 6 and 7. |
| Institutional Department Name | (0008,1040) | 3 | Is filled in by FSC and FSU as in chapter 4, 5, 6 and 7. |
| Manufacturer's Model Name | (0008,1090) | 3 | Is filled in by FSC and FSU as in chapter 4, 5, 6 and 7. |
| Software Versions | (0018,1020) | 3 | Is filled in by FSC and FSU as in chapter 4, 5, 6 and 7. |

7.5.3.4 Image Directory Record Definition

TABLE 7.5-6
IMAGE KEYS

| Key | Tag | Type | Attribute Description |
|------------------------|-------------|------|---|
| Specific Character Set | (0008,0005) | 1C | Is filled in by FSC and FSU as in chapter 4, 5, 6 and 7. |
| Instance Number | (0020,0013) | 1 | Is filled in by FSC and FSU as in chapter 4, 5, 6 and 7. If empty, a Instance Number is created by the equipment. |
| Icon Image Sequence | (0088,0200) | 3 | Not used |
| Content Date | (0008,0023) | 3 | Is filled in by FSC and FSU as in chapter 4, 5, 6 and 7. |
| Content Time | (0008,0033) | 3 | Is filled in by FSC and FSU as in chapter 4, 5, 6 and 7. |
| Image Type | (0008,0008) | 3 | Is filled in by FSC and FSU as in chapter 4, 5, 6 and 7. |
| Rows | (0028,0010) | 3 | Is filled in by FSC and FSU as in chapter 4, 5, 6 and 7. |
| Columns | (0028,0011) | 3 | Is filled in by FSC and FSU as in chapter 4, 5, 6 and 7. |

| | | | |
|--|-------------|---|--|
| Number Of Frames | (0028,0008) | 3 | Is filled in by FSC and FSU as in chapter 4, 5, 6 and 7. |
| Photometric Interpretation | (0028,0004) | 3 | Is filled in by FSC and FSU as in chapter 4, 5, 6 and 7. |
| Referenced Transfer Syntax UID in File | (0004,1512) | 3 | Is set to the Transfer Syntax UID in File |
| Referenced SOP Instance UID in File | (0004,1511) | 3 | Is set to the SOP instance UID in File |
| Referenced SOP Class in File | (0004,1510) | 3 | Is set to the SOP class UID in File |
| Contrast/Bolus Agent | (0018,0010) | 2 | Is filled in by FSC and FSU as in chapter 4, 5, 6 and 7. |
| Lossy Image Compression | (0028,2110) | 3 | Is filled in by FSC and FSU as in chapter 4, 5, 6 and 7. |
| Lossy Image Compression Ratio | (0028,2112) | 3 | Is filled in by FSC and FSU as in chapter 4, 5, 6 and 7. |

7.5.3.5 Report Directory Record Definition

TABLE 7.5-7
REPORT KEYS

| Key | Tag | Type | Attribute Description |
|--|-------------|------|---|
| Specific Character Set | (0008,0005) | 1C | Is filled in by FSC and FSU as in chapter 4, 5, 6 and 7. |
| Instance Number | (0020,0013) | 1 | Is filled in by FSC and FSU as in chapter 4, 5, 6 and 7. If empty, a Instance Number is created by the equipment. |
| Content Date | (0008,0023) | 3 | Is filled in by FSC and FSU as in chapter 4, 5, 6 and 7. |
| Content Time | (0008,0033) | 3 | Is filled in by FSC and FSU as in chapter 4, 5, 6 and 7. |
| Referenced Transfer Syntax UID in File | (0004,1512) | 3 | Is set to the Transfer Syntax UID in File |
| Referenced SOP Instance UID in File | (0004,1511) | 3 | Is set to the SOP instance UID in File |
| Referenced SOP Class in File | (0004,1510) | 3 | Is set to the SOP class UID in File |
| Completion Flag | (0040,A491) | 3 | Is filled in by FSC and FSU as in chapter 4, 5, 6 and 7. |
| Verification Flag | (0040,A493) | 3 | Is filled in by FSC and FSU as in chapter 4, 5, 6 and 7. |

7.5.3.6 Private Directory Record Definition

Not used.

7.5.3.7 Multi-Referenced File Directory Record Definition

Not used.

7.6 PRIVATE DATA DICTIONARY

If so configured, the product will send ultrasound raw data information in private data elements designated by the Private Creator element:

| Element Name | Tag | VR | VM | Description |
|---------------------|------------|-----------|-----------|--------------------------------|
| Private Creator | 7FE1,00xx | LO | 1 | GEMS_Ultrasound_MovieGroup_001 |

This means that all private tags starting with 7FE1,xx will belong to the GEMS_Ultrasound_MovieGroup_001.

If so configured, the product will send preview image in private data elements designated by the Private Creator element:

| Element Name | Tag | VR | VM | Description |
|---------------------|------------|-----------|-----------|--------------------------------|
| Private Creator | 6003,00xx | LO | 1 | GEMS_Ultrasound_ImageGroup_001 |

This means that all private tags starting with 6003,xx will belong to the GEMS_Ultrasound_ImageGroup_001.

8. STORAGE COMMITMENT PUSH MODEL SOP CLASS DEFINITION

8.1 INTRODUCTION

This section of the DICOM Conformance Statement specifies the Storage Commitment Push Model SOP Class, the optional attributes and service elements supported, the valid range of values for mandatory and optional attributes, and the status code behavior.

8.2 STORAGE COMMITMENT PUSH MODEL SOP CLASS DEFINITION

8.2.1 IOD Description

8.2.1.1 STORAGE COMMITMENT MODULE

TABLE 8.2-1
STORAGE COMMITMENT MODULE

| Attribute Name | Tag | Attribute Description |
|------------------------------|-------------|-------------------------------------|
| Transaction UID | (0008,1195) | Uniquely generated by the equipment |
| Retrieve AE Title | (0008,0054) | Not used |
| Storage Media File-Set ID | (0088,0130) | Not used |
| Storage Media File-Set UID | (0088,0140) | Not used |
| Referenced SOP Sequence | (0008,1199) | Supported |
| >Referenced SOP Class UID | (0008,1150) | Supported |
| >Referenced SOP Instance UID | (0008,1155) | Supported |
| >Retrieve AE Title | (0008,0054) | Not used |
| >Storage Media File-Set ID | (0088,0130) | Not used |
| >Storage Media File-Set UID | (0088,0140) | Not used |
| Failed SOP Sequence | (0008,1198) | Supported |
| >Referenced SOP Class UID | (0008,1150) | Supported |
| >Referenced SOP Instance UID | (0008,1155) | Supported |
| >Failure Reason | (0008,1197) | Supported |

8.2.2 DIMSE Service Group

| DIMSE Service Element | Usage SCU/SCP |
|-----------------------|---------------|
| N-EVENT-REPORT | M/M |
| N-ACTION | M/M |

8.2.3 Operations

8.2.3.1 Action Information

TABLE 8.2-3
STORAGE COMMITMENT REQUEST - ACTION INFORMATION

| Action Type Name | Action Type ID | Attribute | Tag | Requirement Type SCU/SCP |
|----------------------------|----------------|------------------------------|-------------|--------------------------|
| Request Storage Commitment | 1 | Transaction UID | (0008,1195) | 1/1 |
| | | Storage Media File-Set ID | (0088,0130) | Not used |
| | | Storage Media File-Set UID | (0088,0140) | Not used |
| | | Referenced SOP Sequence | (0008,1199) | 1/1 |
| | | >Referenced SOP Class UID | (0008,1150) | 1/1 |
| | | >Referenced SOP Instance UID | (0008,1155) | 1/1 |
| | | >Storage Media File-Set ID | (0088,0130) | Not used |
| | | >Storage Media File-Set UID | (0088,0140) | Not used |

8.2.3.2 Service Class User Behavior

EchoPAC PC sends the N-ACTION primitive (Storage Commitment Request) after successful exam save to a DICOM Storage SCP.

EchoPAC PC may request storage commitment for all generated SOP Class UIDs:

| | |
|--|-----------------------------|
| Ultrasound Multi-frame Image Storage | 1.2.840.10008.5.1.4.1.1.3.1 |
| Ultrasound Multi-frame Image Storage (Retired) | 1.2.840.10008.5.1.4.1.1.3 |
| Ultrasound Image Storage | 1.2.840.10008.5.1.4.1.1.6.1 |

| | |
|------------------------------------|---------------------------|
| Ultrasound Image Storage (Retired) | 1.2.840.10008.5.1.4.1.1.6 |
| Secondary Capture Image Storage | 1.2.840.10008.5.1.4.1.1.7 |

The association for the N-ACTION is disconnected after processing the response. Thus, the N-EVENT-REPORT must be sent on a separate association.

The Referenced Study Component Sequence Attribute is not supported.

The Transaction UID is valid for two days. If no answer is received, the request will be removed without warning the user.

The optional Storage Media File-Set ID & UID Attributes in the N-ACTION are not supported.

On receipt of an unsuccessful N-ACTION Response Status Code from the SCP, the request will be put in a holding queue for the user to manually retry the request.

8.2.3.3 Status Codes

No Service Class specific status values are defined for the N-ACTION Service. See PS 3.7 for general response status codes.

8.2.4 Notifications

EchoPAC PC will only listen for an N-EVENT-REPORT from the SCP in a new association on the listen port for Verification and Storage Commitment.

8.2.4.1 Event Information

TABLE 8.2-4
STORAGE COMMITMENT RESULT - EVENT INFORMATION

| Event Type Name | Event Type ID | Attribute | Tag | Requirement Type SCU/SCP |
|--|---------------|------------------------------|-------------|--------------------------|
| Storage Commitment Request Successful | 1 | Transaction UID | (0008,1195) | -/1 |
| | | Retrieve AE Title | (0008,0054) | Not used |
| | | Storage Media File-Set ID | (0088,0130) | Not used |
| | | Storage Media File-Set UID | (0088,0140) | Not used |
| | | Referenced SOP Sequence | (0008,1199) | -/1 |
| | | >Referenced SOP Class UID | (0008,1150) | -/1 |
| | | >Referenced SOP Instance UID | (0008,1155) | -/1 |
| | | >Retrieve AE Title | (0008,0054) | Not used |
| | | >Storage Media File-Set ID | (0088,0130) | Not used |
| | | >Storage Media File-Set UID | (0088,0140) | Not used |
| Storage Commitment Request Complete - Failures Exist | 2 | Transaction UID | (0008,1195) | -/1 |
| | | Retrieve AE Title | (0008,0054) | Not used |
| | | Storage Media File-Set ID | (0088,0130) | Not used |
| | | Storage Media File-Set UID | (0088,0140) | Not used |
| | | Referenced SOP Sequence | (0008,1199) | -/1C |
| | | >Referenced SOP Class UID | (0008,1150) | -/1 |
| | | >Referenced SOP Instance UID | (0008,1155) | -/1 |
| | | >Retrieve AE Title | (0008,0054) | Not used |
| | | >Storage Media File-Set ID | (0088,0130) | Not used |
| | | >Storage Media File-Set UID | (0088,0140) | Not used |
| | | Failed SOP Sequence | (0008,1198) | -/1 |

| | | | | |
|--|--|---------------------------------|-------------|-----|
| | | >Referenced SOP Class UID | (0008,1150) | -/1 |
| | | >Referenced SOP Instance UID | (0008,1155) | -/1 |
| | | >Failure Reason | (0008,1197) | -/1 |

8.2.4.2 Service Class User Behavior

If a successful answer is received, the request will be removed without warning the user.

If a non-successful answer is received, the request will be left in the holding queue.

If no answer is received, the request will be removed without warning the user after two days.

8.2.4.3 Status Codes

No Service Class specific status values are defined for the N-EVENT-REPORT Service. See PS 3.7 for general response status code.

9. PRINT MANAGEMENT SOP CLASS DEFINITION

9.1 INTRODUCTION

This section of the DICOM Conformance Statement specifies the supported Print Management SOP and Meta SOP Classes, the optional attributes and service elements supported, the valid range of values for mandatory and optional attributes, and the status code behavior.

9.2 - Basic Print Management Meta SOP Classes

9.3 - Print Management SOP Class Definitions

9.4 - Print Management IODs

9.5 - IOD Module Definition

9.2 BASIC PRINT MANAGEMENT META SOP CLASSES

The Basic Print Management Meta SOP Classes correspond with the minimum functionality that an implementation of the Print Management Service Class shall support.

EchoPAC PC supports the Basic Grayscale Print Management Meta SOP Class and the Basic Color Print Management Meta SOP Class. These are defined in Table 9.2.1-1 and Table 9.2.2-1.

9.2.1 Basic Grayscale Print Management Meta SOP Class

The Basic Grayscale Print Management Meta SOP Class is defined by the following set of supported SOP Classes.

TABLE 9.2.1-1 BASIC GRAYSCALE PRINT MANAGEMENT META SOP CLASS

| SOP Class Name | Usage SCU | Reference |
|-------------------------------------|------------------|------------------|
| Basic Film Session SOP Class | M | see 9.3.1 |
| Basic Film Box SOP Class | M | see 9.3.2 |
| Basic Grayscale Image Box SOP Class | M | see 9.3.3.1 |
| Printer SOP Class | M | see 9.3.4 |

9.2.2 Basic Color Print Management Meta SOP Class

The Basic Color Print Management Meta SOP Class is defined by the following set of supported SOP Classes

TABLE 9.2.2-1 BASIC COLOR PRINT MANAGEMENT META SOP CLASS

| SOP Class Name | Usage SCU | Reference |
|---------------------------------|-----------|-------------|
| Basic Film Session SOP Class | M | see 9.3.1 |
| Basic Film Box SOP Class | M | see 9.3.2 |
| Basic Color Image Box SOP Class | M | see 9.3.3.2 |
| Printer SOP Class | M | see 9.3.4 |

9.3 PRINT MANAGEMENT SOP CLASS DEFINITIONS

9.3.1 Basic Film Session SOP Class

The Basic Film Session IOD describes the presentation parameters, which are common for all the films of a film session. The DIMSE services that are applicable to the IOD are shown in Table 9.3.1-1.

TABLE 9.3.1-1 DIMSE SERVICE GROUP

| DIMSE Service Element | Usage SCU | Reference |
|-----------------------|-----------|---------------|
| N-CREATE | M | see 9.3.1.1.1 |
| N-SET | U | see 9.3.1.1.2 |
| N-DELETE | U | see 9.3.1.1.3 |
| N-ACTION | U | see 9.3.1.1.4 |

9.3.1.1 DIMSE Service Group

9.3.1.1.1 N-CREATE

The N-CREATE DIMSE Service is used by EchoPAC PC to request that the SCP (printer) create a Film Session SOP Instance. Table 9.4.2-1 defines the Basic Film Session Presentation Module attributes used in this request.

9.3.1.1.2 N-SET

Not used in this implementation.

9.3.1.1.3 N-DELETE

Not used in this implementation.

9.3.1.1.4 N-ACTION

Not used in this implementation

9.3.2 Basic Film Box SOP Class

The Basic Film Box IOD is an abstraction of the presentation of one film of the film session. The DIMSE services that are applicable to the IOD are shown in Table 9.3.2-1.

TABLE 9.3.2-1 DIMSE SERVICE GROUP

| DIMSE Service Element | Usage SCU | Reference |
|------------------------------|------------------|------------------|
| N-CREATE | M | see 9.3.2.1.1 |
| N-ACTION | M | see 9.3.2.1.2 |
| N-DELETE | U | see 9.3.2.1.3 |
| N-SET | U | see 9.3.2.1.4 |

9.3.2.1 DIMSE Service Group

9.3.2.1.1 N-CREATE

The N-CREATE DIMSE Service is used by EchoPAC PC to request that the SCP create a Film Box SOP Instance. Table 9.4.2-1 defines the Basic Film Box Presentation Module attributes used in this request.

9.3.2.1.2 N-ACTION

The N-ACTION DIMSE Service is used by EchoPAC PC to request the SCP (printer) to print the number of copies configured by the user to a film of the film session.

9.3.2.1.3 N-DELETE

The N-DELETE DIMSE Service is used by EchoPAC PC to request the SCP (printer) to delete the complete Film Box. The root Film Box Instance UID is sent to the SCP to accomplish this.

9.3.2.1.4 N-SET

Not used in this implementation.

9.3.3 Image Box SOP Class

9.3.3.1 Basic Grayscale Image Box SOP Class

The Basic Grayscale Image Box IOD is an abstraction of the presentation of an image and image related data in the image area of a film. The DIMSE services that are applicable to the IOD are shown in Table 9.3.3-1.

TABLE 9.3.3-1 DIMSE SERVICE GROUP

| DIMSE Service Element | Usage SCU | Reference |
|------------------------------|------------------|------------------|
| N-SET | M | see 9.3.3.1.1 |

9.3.3.1.1 DIMSE Service Group (N-SET)

The N-SET DIMSE Service is used by EchoPAC PC to update the Basic Grayscale Image Box SOP Instance. Table 9.5.2-5 defines the Basic Image Box Presentation Module attributes used.

9.3.3.2 Basic Color Image Box SOP Class

The Basic Color Image Box IOD is an abstraction of the presentation of an image and image related data in the image area of a film. The DIMSE services that are applicable to the IOD are shown in Table 9.3.3-2.

TABLE 9.3.3-2 DIMSE SERVICE GROUP

| DIMSE Service Element | Usage SCU | Reference |
|-----------------------|-----------|---------------|
| N-SET | M | see 9.3.3.2.1 |

9.3.3.2.1 DIMSE Service Group (N-SET)

The N-SET DIMSE Service is used by EchoPAC PC to update the Basic Color Image Box SOP Instance. Table 9.5.2-5 defines the Basic Image Box Presentation Module attributes used.

9.3.4 Printer SOP Class

The Printer IOD is an abstraction of the hard copy printer and is the basic Information Entity to monitor the status of the printer. The DIMSE services that are applicable to the IOD are shown in table 11.3.4-1.

9.3.4.1 DIMSE Service Group

TABLE 9.3.4-1 DIMSE SERVICE GROUP

| DIMSE Service Element | Usage SCU | Reference |
|-----------------------|-----------|----------------|
| N-EVENT-REPORT | M | see 11.3.4.1.1 |
| N-GET | U | see 9.3.4.1.2 |

9.3.4.1.1 N-EVENT_REPORT

EchoPAC PC confirms the N-EVENT-REPORT initiated by the SCP (printer).

9.3.4.1.2 N-GET

Used by EchoPAC PC to request the SCP to get a Printer SOP Instance. Table 9.5.2-6 defines the Printer Module attributes.

9.4 PRINT MANAGEMENT IODS

Within an entity of a DICOM Print Management, attributes are grouped into a related set of attributes. A set of related attributes is termed a module. A module facilitates the understanding of the semantics concerning the attributes and how the attributes are related with each other. A module grouping does not infer any encoding of information into datasets.

Table 9.4.1-1, Table 9.4.2-1, Table 9.4.3-1, and Table 9.4.4-1 identify the defined modules within the entities which comprise the DICOM Print Management Service IODs. Modules are identified by Module Name.

See DICOM for a complete definition of the entities, modules and attributes.

9.4.1 Film Session IOD Module

TABLE 9.4.1-1 FILM SESSION IOD MODULES

| Module Name | Reference | Module Description |
|--|-----------|--|
| SOP Common Module | 9.5.2.1 | Contains SOP Common information |
| Basic Film Session Presentation Module | 9.5.2.1 | Contains Film Session presentation information |
| Basic Film Session Relationship Module | 9.5.2.2 | References to related SOPs |

9.4.2 Basic Film Box IOD Module Table

TABLE 9.4.2-1 BASIC FILM BOX IOD MODULES

| Module Name | Reference |
|------------------------------------|-----------|
| SOP Common Module | 9.5.1.1 |
| Basic Film Box Presentation Module | 9.5.2.3 |
| Basic Film Box Relationship Module | 9.5.2.2 |

9.4.3 Basic Image Box IOD Module Table

TABLE 9.4.3-1 BASIC IMAGE BOX IOD MODULES

| Module Name | Reference |
|-------------------------------------|-----------|
| SOP Common Module | 9.5.1.1 |
| Image Box Pixel Presentation Module | 9.5.2.5 |
| | |

9.4.4 Printer IOD Module Table

TABLE 9.4.4-1 PRINTER IOD MODULES

| Module Name | Reference |
|-------------------|-----------|
| SOP Common Module | 9.5.1.1 |
| Printer Module | 9.5.2.6 |

9.5 INFORMATION MODULE DEFINITIONS

Please refer to DICOM Standard Part 3 (Information Object Definitions) for a description of each of the entities and modules that comprise the Print Management.

The following modules are included to convey Enumerated Values, Defined Terms, and Optional Attributes supported.

9.5.1 General Modules

9.5.1.1 SOP Common Module

This section defines the attributes that are required for proper functioning and identification of the associated SOP Instances. They do not specify any semantics about the Real-World Object represented by the IOD.

TABLE 9.5.1-1 SOP COMMON MODULE ATTRIBUTES

| Attribute Name | Tag | Type | Attribute Description |
|------------------------|-------------|-------------|---|
| SOP Class UID | (0008,0016) | 1 | Varies with Module Instance and DIMSE Service being used. 1.2.840.100011.5.1.1.1 (Film Session) 1.2.840.100011.5.1.1.2 (Film Box) 1.2.840.100011.5.1.1.4 (Image Box) |
| SOP Instance UID | (0008,0018) | 1 | Provided by SCP (printer). |
| Specific Character Set | (0008,0005) | 1C | Not used as expanded or replacement character sets not used. |
| Instance Creation Date | (0008,0012) | 3 | Not used. |
| Instance Creation Time | (0008,0013) | 3 | Not used. |
| Instance Creator UID | (0008,0014) | 3 | Not used. |

9.5.2 Print Management Modules

For all user configurable tags with no default, no value will be sent if the tag is not configured.

9.5.2.1 Basic Film Session Presentation Module

This section defines the attributes that are common for all films of a film session. The attributes described in table 11.5.2-1 apply when the N-CREATE DIMSE service is used.

TABLE 9.5.2-1 BASIC FILM SESSION PRESENTATION MODULE ATTRIBUTES

| Attribute Name | Tag | USAGE (SCU) | Attribute Description |
|--------------------|-------------|-------------|---|
| Number of Copies | (2000,0010) | U | Defined Terms used (user configurable): Default is 1. Max is 99. |
| Print Priority | (2000,0020) | U | Defined Terms used (user configurable): HIGH, MED, LOW. Default is HIGH. |
| Medium Type | (2000,0030) | U | Defined Terms used (user configurable): PAPER BLUE FILM CLEAR FILM Default is CLEAR FILM. |
| Film Destination | (2000,0040) | U | Defined Terms used (user configurable): MAGAZINE - default PROCESSOR |
| Film Session Label | (2000,0050) | U | User configurable. No default. |
| Memory Allocation | (2000,0060) | U | Not Used |

9.5.2.2 Basic Film Session Relationship Module

TABLE 9.5.2-2 BASIC FILM SESSION RELATIONSHIP MODULE ATTRIBUTES

| Attribute Name | Tag | USAGE (SCU) | Attribute Description |
|------------------------------|-------------|-------------|-----------------------|
| Referenced Film Box Sequence | (2000,0500) | U | Not used |
| >Referenced SOP Class UID | (0008,1150) | U | |
| >Referenced SOP Instance UID | (0008,1155) | U | |

9.5.2.3 Basic Film Box Presentation Module

The attributes described in table 11.5.2-3 apply when the N-CREATE DIMSE service is used.

TABLE 9.5.2-3 BASIC FILM BOX PRESENTATION MODULE ATTRIBUTES

| Attribute Name | Tag | USAGE (SCU) | Attribute Description |
|------------------------------|-------------|-------------|--|
| Image Display Format | (2010,0010) | M | Enumerated values used (user configurable): STANDARDX,Y, where X and Y can take values from 1 to 5. Default is STANDARD\1,1. |
| Annotation Display Format ID | (2010,0030) | U | Not used. |
| Film Orientation | (2010,0040) | U | Defined Terms used (user configurable): PORTRAIT - default LANDSCAPE |
| Film Size ID | (2000,0050) | U | Defined Terms used (user configurable): 8INX10IN - default 10INX12IN 10INX14IN 11INX14IN 14INX14IN 14INX17IN 24CMX24CM 24CMX30CM |
| Magnification Type | (2010,0060) | U | Defined Terms Used (user configurable): REPLICATE - default BILINEAR CUBIC NONE |
| Smoothing Type | (2010,0080) | U | Free form text entry field (user configurable) and only sent if Magnification Type is CUBIC. No default |
| Border Density | (2010,0100) | U | Defined Terms Used (user configurable): BLACK WHITE Default is BLACK. |
| Empty Image Density | (2010,0110) | U | Defined Terms Used (user configurable): BLACK WHITE Default is WHITE. |
| Min Density | (2010,0120) | U | User configurable. No default. Max is 999. |

| | | | |
|---------------------------|-------------|---|--|
| Max Density | (2010,0130) | U | User configurable. No default. Max is 999. |
| Trim | (2010,0140) | U | Enumerated Values Used (user configurable): YES NO Default is NO. |
| Configuration Information | (2010,0150) | U | User configurable. No default. |

9.5.2.4 Basic Film Box Relationship Module

This section defines the attributes that describe the common parameters, which apply for all images on a given sheet of film.

TABLE 9.5.2-4 BASIC FILM BOX RELATIONSHIP MODULE ATTRIBUTES

| Attribute Name | Tag | USAGE (SCU) | Attribute Description |
|--------------------------------------|-------------|-------------|---------------------------|
| Referenced Film Session Sequence | (2010,0500) | M | |
| >Referenced SOP Class UID | (0008,1150) | M | 1.2.840.10008.5.1.1.1 |
| >Referenced SOP Instance UID | (0008,1155) | M | Provided by SCP (printer) |
| Referenced Image Box Sequence | (2010,0510) | U | Not used |
| >Referenced SOP Class UID | (0008,1150) | U | |
| >Referenced SOP Instance UID | (0008,1155) | U | |
| Referenced Basic Annotation Sequence | (2010,0520) | U | Not used |
| >Referenced SOP Class UID | (0008,1150) | U | |
| >Referenced SOP Instance UID | (0008,1155) | U | |

9.5.2.5 Image Box Pixel Presentation Module

The attributes described in table 11.5.2-5 apply when the DIMSE Service N-SET is used.

TABLE 9.5.2-5 IMAGE BOX PIXEL PRESENTATION MODULE ATTRIBUTES

| Attribute Name | Tag | USAGE (SCU) | Attribute Description |
|--------------------------------|--------------|-------------|---|
| Image Position | (2020,0010) | M | Based on the image display format. |
| Polarity | (2020,0020) | U | Defined term, NORMAL |
| Requested Image Size | (2020,0030) | U | Not sent |
| Basic Grayscale Image Sequence | (2020,0110) | M | |
| >Samples Per Pixel | (0028,0002) | M | Value = '1' |
| >Photometric Interpretation | (0028,0004) | M | Defined Term MONOCHROME2 used |
| >Rows | (0028,0010) | M | Value depends on scanning mode and configuration setup. |
| >Columns | (0028,0011) | M | Value depends on scanning mode and configuration setup. |
| >Pixel Aspect Ratio | (0028,0034) | MC | Not used |
| >Bits Allocated | (0028,0100) | M | Value always = 0008H |
| >Bits Stored | (0028,0101) | M | Value always = 0008H |
| >High Bit | (0028,0102) | M | Value always = 0007H |
| >Pixel Representation | (0028,0103) | M | Defined Value '0' - unsigned integer |
| >Pixel Data | (7FE0,0010) | M | |
| Basic Color Image Sequence | (2020,0111) | M | |
| >Samples Per Pixel | (0028,0002) | M | Value = '3' |
| >Photometric Interpretation | (0028,0004) | M | Defined Term RGB used |
| >Rows | (0028,0010) | M | Value depends on scanning mode and configuration setup. |
| >Columns | (0028,0011) | M | Value depends on scanning mode and configuration setup. |
| >Pixel Aspect Ratio | (0028,0034) | MC | Not used |
| >Bits Allocated | (0028,0100) | M | Value always = 0008H |
| >Bits Stored | (0028,0101) | M | Value always = 0008H |
| >High Bit | (0028,0102) | M | Value always = 0007H |
| >Pixel Representation | (0028,0103) | M | Defined Value '0' - unsigned integer |
| >Pixel Data | (7FE0,0010) | M | |
| Planar Configuration | (0028, 0006) | M | 0001H, color-by-plane, when Basic Color Image Sequence is set |

9.5.2.6 Printer Module

This section defines the attributes that are used to monitor the status of the printer. The attributes described in Table 9.5.2-6 apply when the DIMSE Service N-GET is used.

TABLE 9.5.2-6 PRINTER MODULE ATTRIBUTES

| Attribute Name | Tag | USAG E (SCU) | Attribute Description |
|-------------------------|-------------|--------------------|---|
| Printer Status | (2110,0010) | U | Used to check the status of the printer before a print operation is started. If the status is different from 0x0, Success the print operation is aborted, a message is displayed and the print files reside in the print buffer. |
| Printer Status Info | (2110,0020) | U | If return status is "FAILURE" an error message is displayed, and the print files resides in the print buffer. |
| Printer Name | (2110,0030) | U | Requested, but not used |
| Manufacturer | (0008,0070) | U | Requested, but not used |
| Manufacturer Model Name | (0008,1090) | U | Requested, but not used |
| Device Serial Number | (0018,1000) | U | Requested, but not used |
| Software Versions | (0018,1020) | U | Requested, but not used |
| Date Last Calibration | (0018,1200) | U | Requested, but not used |
| Last Calibration | (0018,1201) | U | Requested, but not used |

10. STUDY ROOT QUERY/RETRIEVE INFORMATION MODEL DEFINITION

10.1 INTRODUCTION

This section specifies the use of the DICOM Study Root Query/Retrieve Model used to organize data and against which a Query/Retrieve will be performed. The contents of this section are:

10.2 - Information Model Description

10.3 - Information Model Entity-Relationship Model

10.4 - Information Model Keys

10.2 STUDY ROOT INFORMATION MODEL DESCRIPTION

This section defines the implementation of Study Root Query/Retrieve Information Model.

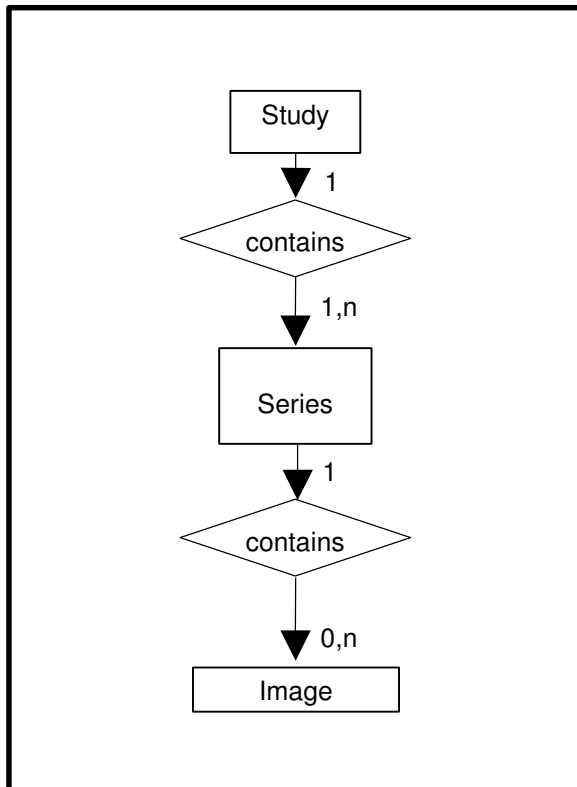
10.3 STUDY ROOT INFORMATION MODEL ENTITY-RELATIONSHIP MODEL

The Entity-Relationship diagram for the Study Root Information Model schema is shown in Illustration 10.3-1. In this figure, the following diagrammatic convention is established to represent the information organization :

- each entity is represented by a rectangular box
- each relationship is represented by a diamond shaped box.
- the fact that a relationship exists between two entities is depicted by lines connecting the corresponding entity boxes to the relationship boxes.

The relationships are fully defined with the maximum number of possible entities in the relationship shown. In other words, the relationship between Series and Image can have up to n Images per Series.

ILLUSTRATION 10.3-1
STUDY ROOT QUERY/RETRIEVE INFORMATION MODEL E/R DIAGRAM



10.3.1 Entity Descriptions

Please refer to DICOM Standard PS 3.4 (Service Class Specifications) for a description of each of the levels contained within the Study Root Query/Retrieve Information Model.

10.3.2 EchoPAC PC Mapping of DICOM entities

TABLE 10.3-1
MAPPING OF DICOM ENTITIES TO ECHOPAC PC ENTITIES

| DICOM | EchoPAC PC Entity |
|--------|-------------------|
| Study | Exam |
| Series | Exam |
| Image | Image |

10.4 INFORMATION MODEL KEYS

Please refer to DICOM Standard PS 3.4 (Service Class Specifications) for a description of each of the levels contained within the Study Root Query/Retrieve Information Model.

The following Level descriptions are included to specify what data elements are supported and what type of matching can be applied. It should be noted that they are the same ones as defined in the DICOM Standard PS 3.4 (Service Class Specifications).

10.4.1 Supported Matching

Following are the types of matching that can be requested by the implementation:

- Single Value matching
- List of UID matching
- Universal Matching
- Wild Card Matching
- Range of date, Range of Time
- Sequence Matching

Fields with “Filtering is supported” in the Matching column can be controlled from the Search screen. This means that the user can filter the downloaded C-FIND result, to view a limited set of the result.

All non-required matching fields can be configured in Config screen to be either enabled, enabled with a constant value or disabled. The constant value will be used as entered by user.

10.4.2 Study Level

This section defines the keys at the Study Level of the Study Root Query/Retrieve Information Model that are supported by this implementation.

TABLE 10.4-2
STUDY LEVEL ATTRIBUTES FOR THE STUDY ROOT
QUERY/RETRIEVE INFORMATION MODEL

| Attribute Name | Tag | Type | Attribute Description |
|------------------------------------|-------------|------|--|
| Study Date | (0008,0020) | R | Matching is supported. Filtering is supported. |
| Study Time | (0008,0030) | R | Matching is supported. |
| Accession Number | (0008,0050) | R | Matching is supported. Filtering is supported. |
| Patient's Name | (0010,0010) | R | Matching is supported. Filtering is supported. |
| Patient ID | (0010,0020) | U | Matching is supported. Filtering is supported. |
| Study ID | (0020,0010) | R | Matching is supported. Filtering is supported. |
| Study Instance UID | (0020,000D) | U | Matching is supported. |
| Modalities in Study | (0008,0061) | O | Matching is supported. |
| Referring Physician's Name | (0008,0090) | O | Matching is supported. |
| Study Description | (0008,1030) | O | Matching is supported. |
| Procedure Code Sequence | (0008,1032) | O | Matching is supported. |
| >Include 'Code Sequence Macro' | | | |
| Name of Physician(s) Reading Study | (0008,1060) | O | Matching is supported. |
| Admitting Diagnoses Description | (0008,1080) | O | Matching is supported. |
| Referenced Study Sequence | (0008,1110) | O | Matching is supported. |
| >Referenced SOP Class UID | (0008,1150) | O | Matching is supported. |
| >Referenced SOP Instance UID | (0008,1155) | O | Matching is supported. |

| | | | |
|-------------------------------------|-------------|---|--|
| Referenced Patient Sequence | (0008,1120) | O | Matching is supported. |
| >Referenced SOP Class UID | (0008,1150) | O | Matching is supported. |
| >Referenced SOP Instance UID | (0008,1155) | O | Matching is supported. |
| Patient's Birth Date | (0010,0030) | O | Matching is supported. Filtering is supported. |
| Patient's Birth Time | (0010,0032) | O | Matching is supported. |
| Patient's Sex | (0010,0040) | O | Matching is supported. Filtering is supported. |
| Other Patient IDs | (0010,1000) | O | Matching is supported. |
| Other Patient Names | (0010,1001) | O | Matching is supported. |
| Patient's Age | (0010,1010) | O | Matching is supported. |
| Patient's Size | (0010,1020) | O | Matching is supported. |
| Patient's Weight | (0010,1030) | O | Matching is supported. |
| Ethnic Group | (0010,2160) | O | Matching is supported. |
| Occupation | (0010,2180) | O | Matching is supported. |
| Additional Patient History | (0010,21B0) | O | Matching is supported. |
| Patient Comments | (0010,4000) | O | Matching is supported. |
| Other Study Numbers | (0020,1070) | O | Matching is supported. |
| Number of Patient Related Studies | (0020,1200) | O | Matching is supported. |
| Number of Patient Related Series | (0020,1202) | O | Matching is supported. |
| Number of Patient Related Instances | (0020,1204) | O | Matching is supported. |
| Number of Study Related Series | (0020,1206) | O | Matching is supported. |
| Number of Study Related Instances | (0020,1208) | O | Matching is supported. |
| Interpretation Author | (4008,010C) | O | Matching is supported. |

TABLE 10.4-3
Q/R STUDY LEVEL AND LOCATION FOR RETRIEVE ATTRIBUTES

| Attribute Name | Tag | Type | Note |
|----------------------|-------------|------|---------------|
| Query Retrieve Level | (0008,0052) | - | Value = STUDY |

TABLE 10.4-4
Q/R SPECIFIC CHARACTER SET ATTRIBUTES

| Attribute Name | Tag | Type | Note |
|------------------------|-------------|------|---|
| Specific Character Set | (0008,0005) | - | Set to "ISO_IR 100" if extended characters are used in query. ISO_IR 100 is supported in responses. |

10.4.3 Series Level

This section defines the keys at the Series Level of the Study Root Query/Retrieve Information Model that are supported by this implementation.

TABLE 10.4-5
SERIES LEVEL ATTRIBUTES FOR THE STUDY ROOT
QUERY/RETRIEVE INFORMATION MODEL

| Attribute Name | Tag | Type | Attribute Description |
|-------------------------------------|-------------|------|------------------------|
| Modality | (0008,0060) | R | Matching is supported. |
| Series Number | (0020,0011) | R | Matching is supported. |
| Series Instance UID | (0020,000E) | U | Matching is supported. |
| Number of Series Related Instances | (0020,1209) | O | Matching is supported. |
| Series Date | (0008,0021) | O | Matching is supported. |
| Series Time | (0008,0031) | O | Matching is supported. |
| Performing Physicians' Name | (0008,1050) | O | Matching is supported. |
| Protocol Name | (0018,1030) | O | Matching is supported. |
| Series Description | (0008,103E) | O | Matching is supported. |
| Operator's Name | (0008,1070) | O | Matching is supported. |
| Institutional Department Name | (0008,1040) | O | Matching is supported. |
| Software Versions | (0018,1020) | O | Matching is supported. |
| Performed Procedure Step Start Date | (0040,0244) | O | Matching is supported. |
| Performed Procedure Step Start Time | (0040,0245) | O | Matching is supported. |
| Request Attributes Sequence | (0040,0275) | O | Matching is supported. |

TABLE 10.4-6
Q/R SERIES LEVEL AND LOCATION FOR RETRIEVE ATTRIBUTES

| Attribute Name | Tag | Type | Note |
|----------------------|-------------|------|----------------|
| Query Retrieve Level | (0008,0052) | - | Value = SERIES |

TABLE 10.4-7
Q/R SPECIFIC CHARACTER SET ATTRIBUTES

| Attribute Name | Tag | Type | Note |
|------------------------|-------------|------|---|
| Specific Character Set | (0008,0005) | - | Set to "ISO_IR 100" if extended characters are used in query. ISO_IR 100 is supported in responses. |

10.4.4 Image Level

This section defines the keys at the Image Level of the Study Root Query/Retrieve Information Model that are supported by this implementation.

TABLE 10.4-8
IMAGE LEVEL ATTRIBUTES FOR THE STUDY ROOT
QUERY/RETRIEVE INFORMATION MODEL

| Attribute Name | Tag | Type | Attribute Description |
|-----------------|-------------|------|------------------------|
| Instance Number | (0020,0013) | R | Matching is supported. |

| | | | |
|----------------------|-------------|---|------------------------|
| SOP Instance UID | (0008,0018) | U | Matching is supported. |
| Contrast/Bolus Agent | (0018,0010) | O | Matching is supported. |

TABLE 10.4-9
Q/R IMAGE LEVEL AND LOCATION FOR RETRIEVE ATTRIBUTES

| Attribute Name | Tag | Type | Note |
|----------------------|-------------|------|---------------|
| Query Retrieve Level | (0008,0052) | - | Value = IMAGE |

TABLE 10.4-10
Q/R SPECIFIC CHARACTER SET ATTRIBUTES

| Attribute Name | Tag | Type | Note |
|------------------------|-------------|------|---|
| Specific Character Set | (0008,0005) | - | Set to "ISO_IR 100" if extended characters are used in query. ISO_IR 100 is supported in responses. |

10.5 PRIVATE DATA DICTIONARY

No private data dictionary is defined.