

GE Healthcare

Hand in hand for a healthier world.

LOGIQ V5 ultrasound

Enhance your capabilities in shared services imaging.



Simplicity and diagnostic confidence go hand in hand.

Your commitment to patients and the utility of ultrasound imaging go hand in hand in building a healthier world. For shared services users, LOGIQ™ V5 makes advanced ultrasound technology simple, affordable and accessible across a wide range of abdominal, vascular, obstetrics, and other exams.

LOGIQ V5 supports you with advanced imaging features, automated calculations, timesaving workflow, onboard clinical information, and efficient ergonomics, all to help enhance your confidence and streamline exams – along with smart economics that help make ownership affordable.



Advanced imaging features and simplicity in workflow

Use advanced techniques to help you achieve clear images:

- ▶ **MLA4 technology** increases frame rate by 4X¹ by processing each echo along four simultaneous receiver beams to study moving organs and blood flow data
- ▶ **Real Time Speckle Reduction Imaging (SRI-HD)** reduces noise while enhancing true tissue architecture
- ▶ **CrossXBeam™** imaging enhances tissue interfaces and border differentiation with compound imaging technology
- ▶ **Coded Harmonic Imaging** near field resolution to help improve small-parts imaging
- ▶ **B-Steer** helps view deep vessels and structures that are angled (ex. tendon insertion)

Perform advanced clinical evaluations that help you diagnose confidently across a wide range of applications:

- ▶ **Advanced imaging modes like color, pulse wave and power Doppler imaging (PDI)** help measure blood flow within a specific area to assist with diagnosis and monitoring
- ▶ **LOGIQ View** allows real-time imaging of long anatomical structures too large to be seen in a single image
- ▶ **Virtual Convex** provides expanded field of view when using linear and sector probes
- ▶ **Anatomical M-Mode** supports anatomical measurements in non-standard planes

Experience simplicity and speed throughout your daily routine:

- ▶ **Switch Probe button** to quickly switch between the two active probes
- ▶ **User Preset button** to quickly create or overwrite user presets
- ▶ **Auto IMT** provides automatic edge detection for intima-media thickness (IMT)
- ▶ **TruScan™ architecture (GE raw data)** allows flexibility to readjust a large set of imaging parameters and re-measure images any time after you have set, frozen or even archived the images
- ▶ **Easy 3D imaging** helps visualize volumetric 3-dimensional data sets
- ▶ **SonoBiometry** is a workflow tool that automatically places calipers to help you perform key fetal biometry measurements quickly



Imaging Assistance

Scan Assistant, a guideline-based exam protocol, reminds you of key anatomical landmarks to be covered—helping enhance your diagnostic confidence while reducing keystrokes.

- ▶ Provides basic as well as advanced protocols for obstetric, gynecological and abdominal scans
- ▶ Helps reduce key strokes
- ▶ Automatically steers Color Doppler
- ▶ Initiates and completes measurements
- ▶ Sets up imaging protocols and modes
- ▶ Automatically inserts comments and reorders images to each user's preference

Scan Coach is an innovative scan plane reference tool—available on demand during live scanning:

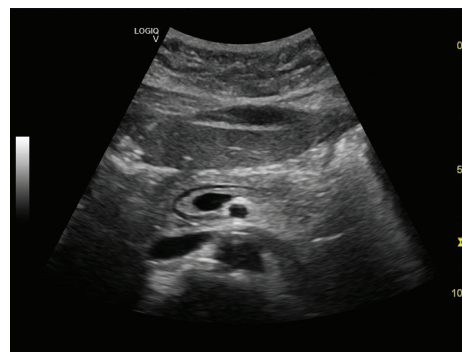
- ▶ Reference images show target scan plane
- ▶ Animation shows ultrasound beam within the anatomy for excellent visualization
- ▶ Schematic drawing shows select anatomical landmarks on target scan plane

Smart ergonomics and economics

The LOGIQ V5 is a compact system with a small and stable physical footprint. Its slim design allows you to use it even where you have limited scan room space, making it a great fit for clinics and constricted scanning spaces.

Backed by multiple years of comprehensive service coverage, LOGIQ V5 is also designed for fast service and a quick repair process.

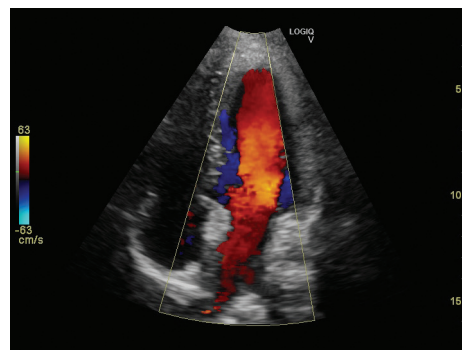
LOGIQ V5 provides robust DICOM® connectivity and is compatible with many imaging IT solutions.



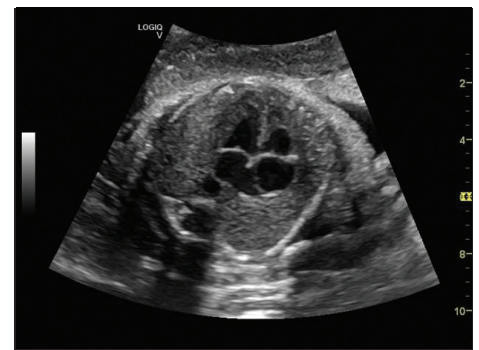
B-mode image of the pancreas showing the pancreatic duct



Imaging in the Virtual Convex mode showing a nodule in the thyroid



Four-chamber view of the adult heart depicting color flow with the 3Sc-RS probe



4-chamber view of the second trimester fetal heart



Imagination at work

About GE Healthcare

GE Healthcare provides transformational medical technologies and services to meet the demand for increased access, enhanced quality and more affordable healthcare around the world. GE (NYSE: GE) works on things that matter - great people and technologies taking on tough challenges. From medical imaging, software & IT, patient monitoring and diagnostics to drug discovery, biopharmaceutical manufacturing technologies and performance improvement solutions, GE Healthcare helps medical professionals deliver great healthcare to their patients.

¹ Four receiver beams are used instead of one.

©2014 General Electric Company – All rights reserved. GE, the GE Monogram, CrossXBeam, LOGIQ and TruScan are trademarks of General Electric Company or one of its subsidiaries. GE Healthcare, a division of General Electric Company.

DICOM is a registered trademark of the National Electrical Manufacturers Association for its standard publications relating to digital communications of medical information.

JB24229US