



Versana Balance

Care with Confidence



INTRODUCING Versana Balance

Versana Balance™ ultrasound helps you provide reliable MSK imaging with no compromise on quality. This practical, competent system delivers comprehensive scanning to cover a broad range of everyday MSK exams.

Designed for MSK clinicians who have used ultrasound and wish to upgrade their capability, the affordable Versana Balance combines physical design, workflow and features developed based on extensive research and testing to meet users' demanding requirements. It comes backed by the GE Healthcare legacy of ultrasound excellence. A wide variety of probes and clinical tools let you provide quick and comfortable exams and confidently diagnose a broad range of MSK conditions.

COMPETENT. EFFICIENT. PRACTICAL.
World class ultrasound designed for peace of mind.



World-class
image quality

Intelligent automated
productivity tools
including **Whizz** dynamic
image tuning

Smart clinical
features

Clinical and product
education

Flexible
financing options*

Expert service and
technical support

Access to a network
of Versana users

Versana Balance
is part of the Versana
ultrasound family:
complete solutions that
help empower care without
compromise, balancing
capability, affordability,
and reliability.

A partner you can trust

Count on GE Healthcare for equipment and support to help you reach new levels of MSK imaging excellence



Dependable service and support for peace of mind

GE Healthcare delivers flexible, worry-free, multi-year coverage to ensure long life, high uptime, maximum patient throughput, strong return on investment.

- Expert service engineers always close by
- Simple maintenance, troubleshooting and repair
- InSite™ service technology for fast remote diagnostics and software fixes*
- Three-year warranty*

**Warranty and remote diagnostic offerings may vary by country or region. Please check with your local GE Healthcare representative.*

Decades of GE Healthcare heritage at your service

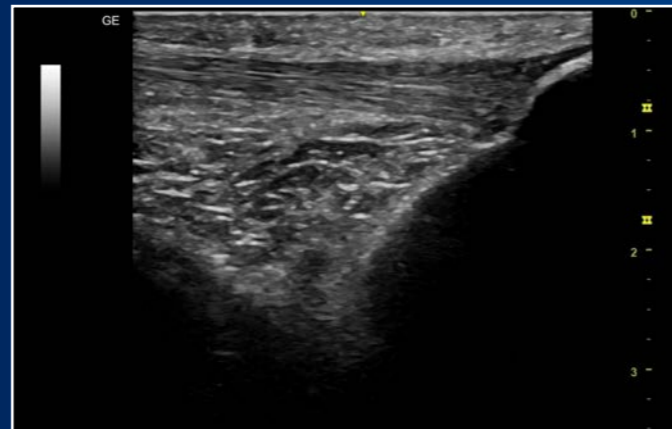
Versana Balance links you to vast GE Healthcare MSK ultrasound expertise. It's designed with you, your practice, and your patients in mind, to meet your clinical, workflow and connectivity needs.



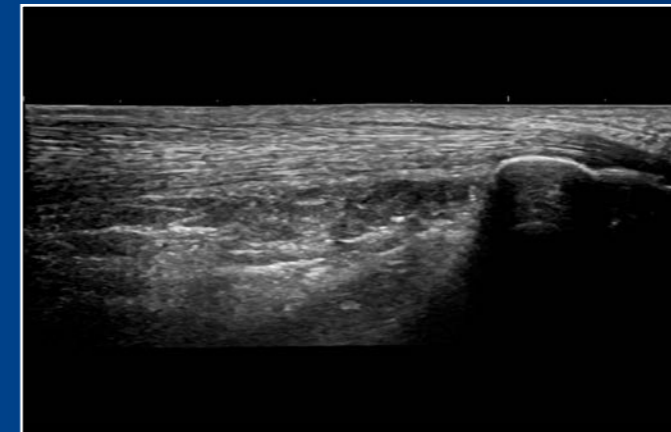
Imaging quality based on world-class technology

Versana Balance helps you see clearly with reliable, long-lasting image quality that ranks with the best in its class. Images provide high spatial and contrast resolution, helping you visualize anatomical structures and physiological function.

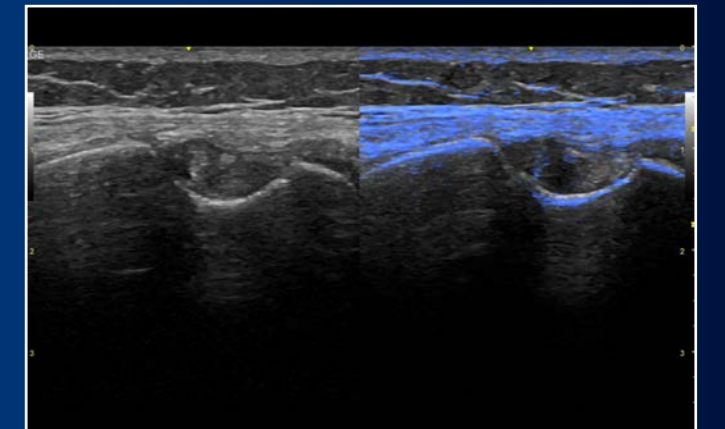
Whizz one-touch dynamic image tuning constantly optimizes images as you scan, even as you move from one bone or region to another. You also get proven functionalities found on higher-end GE Healthcare ultrasound systems.



CrossXBeam and SRI-HD to define structure borders clearly.



Construct and view a static 2D image which is wider than the field of view of a given transducer with LOGIQ View™



Follow-up Fusion overlay for reference of landmarks from previous study to help user find the same scanning position.

A complete solution

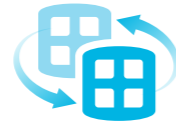
Trusted capabilities, educational support, attractive financing

Competent system. Efficient and practical.

Versana Balance delivers diverse MSK imaging throughout the body, giving you clinical confidence and your patients timely diagnoses and referrals. Intuitive design and automated tools simplify exams and streamline workflow.



Make automatic **2D measurements**



Use the **Follow-Up Tool** to easily compare current and prior images



Create custom MSK exam protocols and standardized workflow with **Scan Assistant**



Use **templates** to create custom reports to suit global or regional standards



Use **Whizz** dynamic image tuning to scan while the system seamlessly optimizes image quality



Easily add **voice comments** to exams



Use **Scan Coach** 3D animation, anatomic illustrations and reference images to find the correct scan plane



Upload images and reports to the cloud for consultation or sharing with patients

Flexible financing to enhance return on investment

Financing plans including monthly payments help you meet financial goals and grow your practice.

CHECK OUT THESE CONVENIENT FEATURES



Sharpen your skills and stay ahead of the curve

- Training and ultrasound education solutions including product and clinical tutorials
- My Trainer on-board help with system care, setup and operation
- Local face-to-face training and remote application support

Cloud access requires internet connection. Financing options and educational offerings vary from country to country. Please check with your local GE Healthcare representative.





An opportunity for growth

Versana ultrasound systems to serve you well today and set your course for the future.

Experience the strength of the GE Healthcare family

Your support team is fully trained, GE Healthcare qualified, deeply experienced, and nearby.

- Expert support during and after purchase
- In-depth staff product training
- Remote or on-site technical, clinical and network support

Customized solutions and path to growth

Versana Balance can scale to suit your MSK imaging needs today and grow with you. Select a basic console and software. Then choose from a variety of optional upgrades as your practice advances.

Versana Club: Learn. Network. Share.

The Versana Club offers resources to help you expand your ultrasound knowledge and improve your practice.

- MSK image-sharing with peers around the world
- Educational offerings
- Web-based video tutorials
- Information on Versana family service solutions and products
- Up-to-date content on ultrasound and patient care
- Notices of regional ultrasound events and other news
- Access to the broader family of GE Healthcare ultrasound user clubs

Register now at www.versanaclub.net.



VERSANA BALANCE: CARE WITH CONFIDENCE
Competent. Efficient. Practical. World class ultrasound designed for peace of mind.

Products mentioned in this material may be subject to government regulation and may not be available in all countries. Please check with your local Sales Representative. Shipment and the effective sale in certain countries can only occur if the product is approved. Final product configuration and features may differ from the ones represented here and may not be available in every country. Check with your local GE Healthcare representative for details.

Imagination at work

© 2019 General Electric Company – All rights reserved.

GE Healthcare reserves the right to make changes in specifications and features shown herein, or discontinue the product described at any time without notice or obligation. Contact your GE Healthcare representative for the most current information. GE, the GE Monogram, Versana Balance, InSite, LOGIQ View, CrossXBeam and B-Flow are trademarks of General Electric Company. GE Healthcare, a division of General Electric Company. GE Medical Systems, Inc., doing business as GE Healthcare.

September 2019
JB70021XX

