



**GE Healthcare
Project Management**

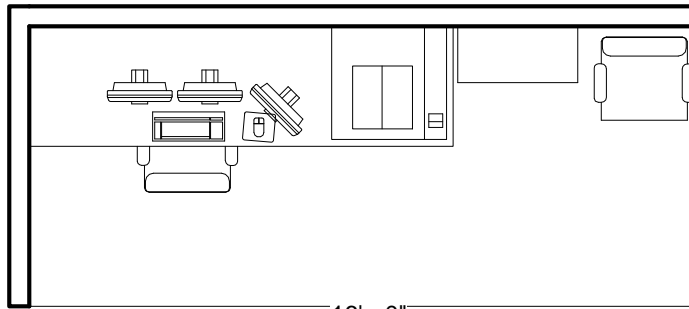
GE Healthcare has made reasonable efforts to ensure this BIM file conforms to requirements of the applicable pre-installation manual. This BIM file was produced to assist with site planning and is not intended for construction or final building modeling. GE Healthcare is not responsible for any damages resulting from use of such file for construction or final building modeling purposes. Compliance with all applicable local, state, and federal laws and regulations is the responsibility of the customer or its designated architects and engineers. Please keep in mind the information in this BIM file is dynamic and is subject to change without notice. It is the responsibility of the customer or its designated architect(s) and engineer(s) to ensure they have the latest equipment or product information.

SENOGRAPHE ESSENTIAL - RENDERING

Project number	9-32
Date	07.FEB.2017
Drawn by	GENPACT
Checked by	

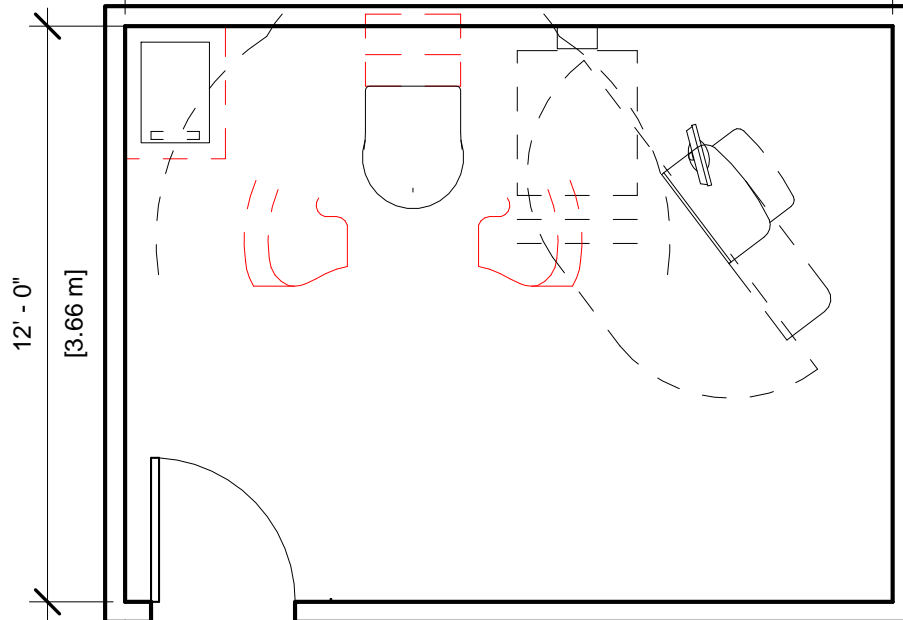
A-1

Scale 12" = 1'-0"



16' - 0"

[4.88 m]



12' - 0"
[3.66 m]

Specialty Equipment Schedule

Description	Weight (lbs)	BTU
Control Room		
REVIEW WORKSTATION	134	2590
REVIEW WORKSTATION	134	2590
REVIEW WORKSTATION	134	2590
STORAGE CABINET	48	0
UPS SYSTEM	68	955
UPS SYSTEM	68	955
COLOR PRINTER	0	1054
CAD OPTION	33	955
HYDRAULIC CHAIR	0	0
Exam Room		
MAIN DISCONNECT CONTROL, WALL MOUNTED GEMS CAT. NO. E4502B, 65 lbs. SEE DETAIL R4502B.	63	0
SENOGRAPHE ESSENTIAL GENERATOR	352	3061
SENOGRAPHE ESSENTIAL GANTRY (BTU's INCLUDE CONTROL CONSOLE)	789	341
SENOGRAPHE ESSENTIAL GANTRY (BTU's INCLUDE CONTROL CONSOLE)	789	341
SENOGRAPHE ESSENTIAL CONTROL STATION	462	0
SENOGRAPHE ESSENTIAL CONTROL STATION	462	0



**GE Healthcare
Project Management**

GE Healthcare has made reasonable efforts to ensure this BIM file conforms to requirements of the applicable pre-installation manual. This BIM file was produced to assist with site planning and is not intended for construction or final building modeling. GE Healthcare is not responsible for any damages resulting from use of such file for construction or final building modeling purposes. Compliance with all applicable local, state, and federal laws and regulations is the responsibility of the customer or its designated architects and engineers. Please keep in mind the information in this BIM file is dynamic and is subject to change without notice. It is the responsibility of the customer or its designated architect(s) and engineer(s) to ensure they have the latest equipment or product information.

SENOGRAPHE ESSENTIAL - PLAN & SCHEDULE

Project number	9-32
Date	07.FEB.2017
Drawn by	GENPACT
Checked by	

A-2

Scale 1/4" = 1'-0"

Hold the Left Click for Rotating around
Use the Scroll for Zooming in and out



9-32 - Seno Essential



GE Healthcare

[Click for Site Planning Support](#)