



GE Healthcare
Project Management

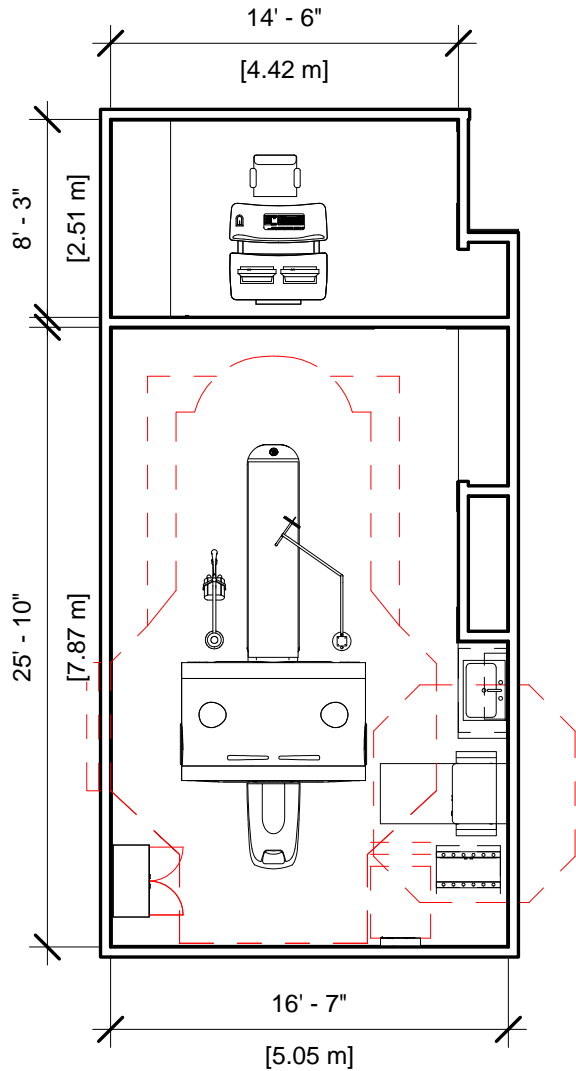
GE Healthcare has made reasonable efforts to ensure this BIM file conforms to requirements of the applicable pre-installation manual. This BIM file was produced to assist with site planning and is not intended for construction or final building modeling. GE Healthcare is not responsible for any damages resulting from use of such file for construction or final building modeling purposes. Compliance with all applicable local, state, and federal laws and regulations is the responsibility of the customer or its designated architects and engineers. Please keep in mind the information in this BIM file is dynamic and is subject to change without notice. It is the responsibility of the customer or its designated architect(s) and engineer(s) to ensure they have the latest equipment or product information.

DISCOVERY VCT - RENDERING

Project number	12-16
Date	07.JULY.17
Drawn by	GENPACT
Checked by	

A-1

Scale 12" = 1'-0"



Specialty Equipment Schedule		
Description	Weight (lbs)	BTU
CONTROL ROOM		
OPERATOR'S CONSOLE / COMPUTER	493	7211
EXAM ROOM		
UPS	619	5122
STORAGE CABINET	99	0
POWER DISTRIBUTION UNIT	800	3399
MAIN DISCONNECT CONTROL	132	0
DISCOVERY VCT	8710	58195
PATIENT TABLE	1854	699
INJECTOR HEAD ON OVERHEAD COUNTERPOISED SUSPENSION	79	0
MONITOR ON OVERHEAD COUNTERPOISED SUSPENSION	61	300



**GE Healthcare
Project Management**

GE Healthcare has made reasonable efforts to ensure this BIM file conforms to requirements of the applicable pre-installation manual. This BIM file was produced to assist with site planning and is not intended for construction or final building modeling. GE Healthcare is not responsible for any damages resulting from use of such file for construction or final building modeling purposes. Compliance with all applicable local, state, and federal laws and regulations is the responsibility of the customer or its designated architects and engineers. Please keep in mind the information in this BIM file is dynamic and is subject to change without notice. It is the responsibility of the customer or its designated architect(s) and engineer(s) to ensure they have the latest equipment or product information.

DISCOVERY VCT - PLAN & SCHEDULE

Project number	12-16
Date	07.JULY.17
Drawn by	GENPACT
Checked by	

A-2

Scale 1/8" = 1'-0"

Hold the Left Click for Rotating around
Use the Scroll for Zooming in and out



12-16 Discovery VCT



GE Healthcare

[Click for Site Planning Support](#)