



**GE Healthcare**  
**Project Management**

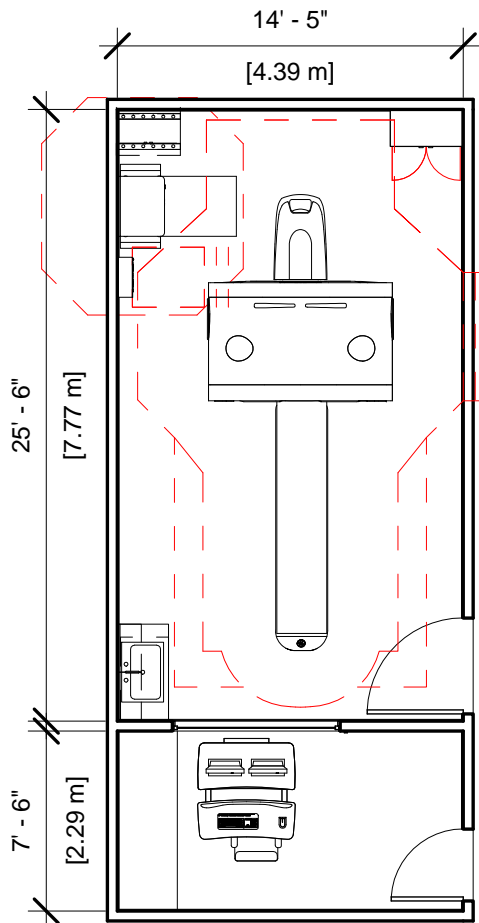
GE Healthcare has made reasonable efforts to ensure this BIM file conforms to requirements of the applicable pre-installation manual. This BIM file was produced to assist with site planning and is not intended for construction or final building modeling. GE Healthcare is not responsible for any damages resulting from use of such file for construction or final building modeling purposes. Compliance with all applicable local, state, and federal laws and regulations is the responsibility of the customer or its designated architects and engineers. Please keep in mind the information in this BIM file is dynamic and is subject to change without notice. It is the responsibility of the customer or its designated architect(s) and engineer(s) to ensure they have the latest equipment or product information.

**DISCOVERY STE - RENDERING**

<b>Project number</b>	<b>12-14</b>
<b>Date</b>	<b>07.JULY.17</b>
<b>Drawn by</b>	<b>GENPACT</b>
<b>Checked by</b>	

**A-1**

**Scale 12" = 1'-0"**



### Specialty Equipment Schedule

Description	Weight (lbs)	BTU
Control Room		
OPERATOR'S CONSOLE / COMPUTER	493	6901
Exam Room		
UPS	619	5122
STORAGE CABINET	99	0
POWER DISTRIBUTION UNIT	800	3399
MAIN DISCONNECT CONTROL	0	0
DISCOVERY STE	8137	34000
PATIENT TABLE	1854	699



**GE Healthcare**  
**Project Management**

GE Healthcare has made reasonable efforts to ensure this BIM file conforms to requirements of the applicable pre-installation manual. This BIM file was produced to assist with site planning and is not intended for construction or final building modeling. GE Healthcare is not responsible for any damages resulting from use of such file for construction or final building modeling purposes. Compliance with all applicable local, state, and federal laws and regulations is the responsibility of the customer or its designated architects and engineers. Please keep in mind the information in this BIM file is dynamic and is subject to change without notice. It is the responsibility of the customer or its designated architect(s) and engineer(s) to ensure they have the latest equipment or product information.

#### DISCOVERY STE - PLAN & SCHEDULE

Project number	12-14
Date	07.JULY.17
Drawn by	GENPACT
Checked by	

**A-2**

Scale 1/8" = 1'-0"

Hold the Left Click for Rotating around  
Use the Scroll for Zooming in and out



12-14 Discovery STE



GE Healthcare

Click for Site Planning Support