

Drawing Index

These sheets are a document set and should not be separated. Electrical information and references are contained on all sheets.

SITE READINESS	C1
EQUIPMENT LAYOUT (Equipment locations, heat loads, component weights, environmental specs)	A1
STRUCTURAL LAYOUT (Structural support/mounting locations for floor/wall/ceiling, wall support elevations)	S1
STRUCTURAL DETAILS (Floor and Ceiling loading information)	S2
ELECTRICAL LAYOUT (Contractor supplied wiring, interconnect methods, junction point locations and descriptions)	E1
ELECTRICAL SPECIFICATIONS (Maximum wiring run lengths, interconnect diagram, system power specifications)	E2
ELECTRICAL DETAILS	E3
EQUIPMENT DETAILS	D1 to D2

These drawings indicate the placement and interconnection of the listed equipment components. These drawings are not construction or site preparation drawings. Customer remains ultimately responsible for preparing the site to accommodate the operation of such equipment in compliance with GE Healthcare's written specifications and all applicable federal, state, and/or local requirements.

* REQUIRED REFERENCE *

Discovery CT Series
Pre Installation Manual
5220253-1EN

A mandatory component of this drawing set is the GE Healthcare Pre Installation manual. Failure to reference the Pre Installation manual will result in incomplete documentation required for site design and preparation.

Pre Installation documents for GE Healthcare products can be accessed on the web at:

www.gehealthcare.com/siteplanning

GE Healthcare



CT Site Planning



imagination at work

Customer Site Readiness Requirements

- Any deviation from these drawings must be communicated in writing to and reviewed by your local GE Healthcare Installation Project Manager prior to making changes.
- Make arrangements for any rigging, special handling, or facility modifications that must be made to deliver the equipment to the installation site. If desired, your local GE Healthcare Installation Project Manager can supply a reference list of rigging contractors.
- New construction requires the following; 1. Secure area for equipment, 2. Power for drills and other test equipment, 3. Capability for image analysis, 4. Restrooms.
- Provide for refuse removal and disposal (e.g. crates, cartons, packing)
- Contact a radiation physicist or consultant to specify radiation containment requirements.

GE Equipment Delivery Requirements

The items on the GE Healthcare Site Readiness Checklist are REQUIRED to facilitate equipment delivery to the IS site. Equipment will not be delivered if these requirements are not satisfied.

GE Healthcare Site Readiness Checklist Rev 19					
Before using this document ensure you have the latest Rev from MyWorkshop on DOC0422752					
GHC Global Order #:		Customer:			
GHC PMI:		FE / Installer:			
The customer is responsible for proper site preparation regardless of any GHC measurements/inspections/assessments.					
Inspection Date:	Storage is ready?	PHI is ready?	RF is ready?	FE is ready?	Comments If "N", enter comments or action plan
1					MR Magnet Delivery Requirements: Ensure oxygen venting system is available for magnet connection as defined by GHC Pre-Installation Manual (PIM) requirements; exhaust fan system is installed and operational, 480V power, and chilled water supply is available 24x7 that meets system cooling requirements. External connectivity is available for magnet monitoring and phone service is available during delivery. Surface mount vibromat installed where required. Magnet room final flooring is in place.
2					MR RF Screen Room Requirements: RF Screen Room is tested with copy of Test Report, emailed to skdm@coe@bbt.com, that is compliant with GHC specifications. Back-bolt and magnet anchors (if applicable) installed using 2 part anchor. For HDx systems, blower box mount bolts installed by RF vendor using 2 part anchors.
3					State Regulatory Requirements: Facility registration number provided for states of IL, KY, HI, RI, SC, TX, & WA. X-ray shielding plan and state acknowledgment letter provided to installer for AR, DC, NC, SC, CO.
4					Surface Penetration Requirements: Customer/Contractor scheduled to provide required drilling or cutting into floors, ceilings, and walls, OR surface penetration permit available and posted in the room when GEHC will perform the work.
5					Pre-Delivery Route Requirements: The equipment delivery route from the truck to the final destination within the facility has been reviewed with all key stakeholders to safely meet the minimum requirements for equipment access, and all communications/notifications have occurred. Arrangements have been made for special handling (elevator, rigging, floor protection, fork lift, rollback truck, etc).
6					Finished Room Requirements: Rooms that will contain equipment, including storage areas not in scan suite, are dust free. Provisions taken to maintain a dust free room. Precautions must be taken to prevent dust from entering rooms containing equipment when construction is incomplete in adjacent areas. All walls primed (final coat not needed on Day 1). Shielding, doors, and windows are to be installed. No contractor work being done during or after the installation that will cause dust in the installation areas or potential equipment damage. Room security to prevent unauthorized access and theft has been discussed with customer. The customer is aware of these security issues, implications and responsibility. For Storage: Room must meet PIM requirements for storage.
7					Electrical Requirements: Lockable (LOTO) Main Disconnect Panel (MDPI) is installed per GE guidelines and system power is available. Conduits, electrical cable ducting/dividers/cable trays, and access flooring is installed in proper location and height. Surface floor duct and load-side wires can be installed at time of system installation. Validate outlet location and requirements meet specifications for device/equipment.
8					HVAC Requirements: The HVAC/Chilled Water systems designed to maintain the environment per spec/PIM is at running state and appears to provide the desired environmental conditions including location of vents, temperature and humidity for system operation.
9					Flooring Requirements: Floor is clean and prepared for final floor covering. Floor levelness/flatness is measured and within tolerance, and there are no visible defects per GEHC specifications. Confirm customer anchoring plan aligns with designed floor thickness. Final flooring installed where required for network racks.
10					Ceiling Requirements: Unistrut (or equivalent) location, levelness and spacing is measured (or vendor confirmed) and consistent with the requirement of the installation drawings. Ensure unistrut and rails are not used as mounting surfaces. Ceiling grid is installed. Permanent lighting is installed and operational. HVAC diffusers are installed and connected to ductwork. Ceiling tiles installed per PIM discretion.
11					Staging Requirements: Space has been identified to support the active installation process only. This area meets PIM/project book requirements. Storage space has been identified, if needed. This secured space would be used to store equipment indefinitely. If offsite, transportation plan has been developed at customer expense. This space must meet PIM requirements.
12					Network Connectivity: Hardware for network connectivity/network drop is in place prior to delivery with specified network firewall configuration where required. Site surveys for wireless mobile XR units have been completed.
13					Medical Gases Requirements: Systems (hard piped or portable) in place to allow testing and calibration of equipment (anesthesia, including ventilation).

GE Healthcare
Healthcare Project Implementation - Design Center
Minneapolis, MN
Copyright © 2009 General Electric Company - Proprietary to GE

SHEET TITLE: SITE READINESS
MODALITY TYPE: DISCOVERY CT750 HD
THIS PLAN IS SUBMITTED TO SURVEY LOCATION OF GE HEALTHCARE EQUIPMENT AND ASSOCIATED ELECTRICAL WIRING DETAILS AND ROOM ARRANGEMENTS. IN PREPARING THIS PLAN, EVERY EFFORT HAS BEEN MADE TO CONFORM DETAILS TO THE ACTUAL CONSTRUCTION PURPOSES AND THE COMPANY CANNOT ACCEPT RESPONSIBILITY FOR ANY DAMAGES RESULTING THEREFROM.

PROJECT TITLE:
6-68f
TYPICAL LAYOUT
(W/ GT1700 TABLE)

PROJECT	REVISION
6-68f	07
DATE:	19.May.16
DRAWN BY:	DMH
CHECKED BY:	DJP

REVISION HISTORY:

SHEET
C1

PIM R14
RQ - 160798

GE EQUIPMENT LISTING

EQUIPMENT ON ORDER FROM GE HEALTHCARE, INSTALLED BY GE HEALTHCARE, PER : NEITHER A QUOTE OR CON WAS ISSUED AT THE DATE OF THESE DRAWINGS

NOTE: LOCAL CONDITIONS MAY DICTATE THAT ITEMS IDENTIFIED IN THIS CATEGORY BE INSTALLED BY OTHERS.

ITEM NO.	QUANTITY ORDERED	REFER TO SHEET "D"	ITEM DESCRIPTION (* = EXISTING/REINSTALL)	WEIGHT	HEAT OUTPUT (PER HOUR)	DETAIL NO.	STRC PLAN	ELEC PLAN
1	1		POWER DISTRIBUTION UNIT	798 lbs	1706 kw	B7858D	-	PM S
2	1		OPERATOR'S CONSOLE / COMPUTER WITH MONITORS	568 lbs	6000 kw	B7858B	-	CC S
3	1		STORAGE CABINET (EMPTY CABINET WEIGHT)	99 lbs		M33005	-	-
4	1		REAR CABLE COVER			B8141	-	-
5	1		DISCOVERY CT750 HD GANTRY & BULB'S INCLUDE GANTRY, TABLE & PDU	4049 lbs	35007 kw	B7864D B7864E B7864A B7864B B7864C B7864E.1	B78	CTT C
6	1		VT1700 PATIENT TABLE WITH EXTENDED TABLE TOP (W/O PATIENT)	1047 lbs		B7917	-	-
7	1		TABLE	125 lbs		B8140	-	CC S
8	1		CONSOLE CABINET & LCD MONITORS	216 lbs	3201 kw	B8105	-	S
9	1		OPERATOR'S CHAIR				-	-

THE FOLLOWING ITEMS, WHICH HAVE BEEN ORDERED FROM GE HEALTHCARE, ARE TO BE INSTALLED BY THE CUSTOMER OR HIS CONTRACTOR.

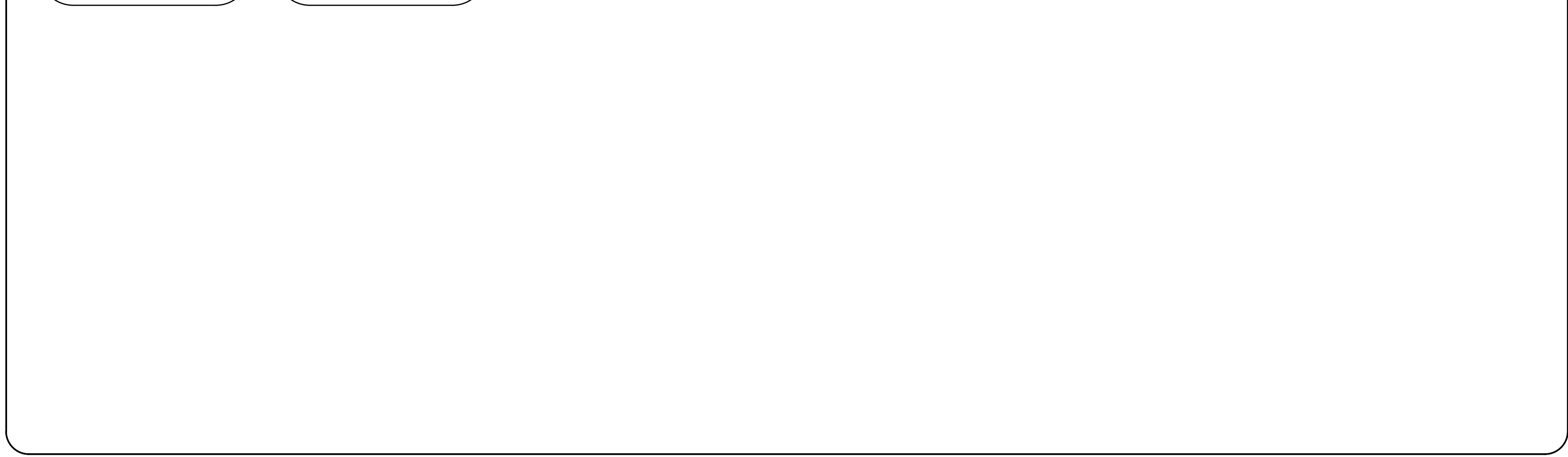
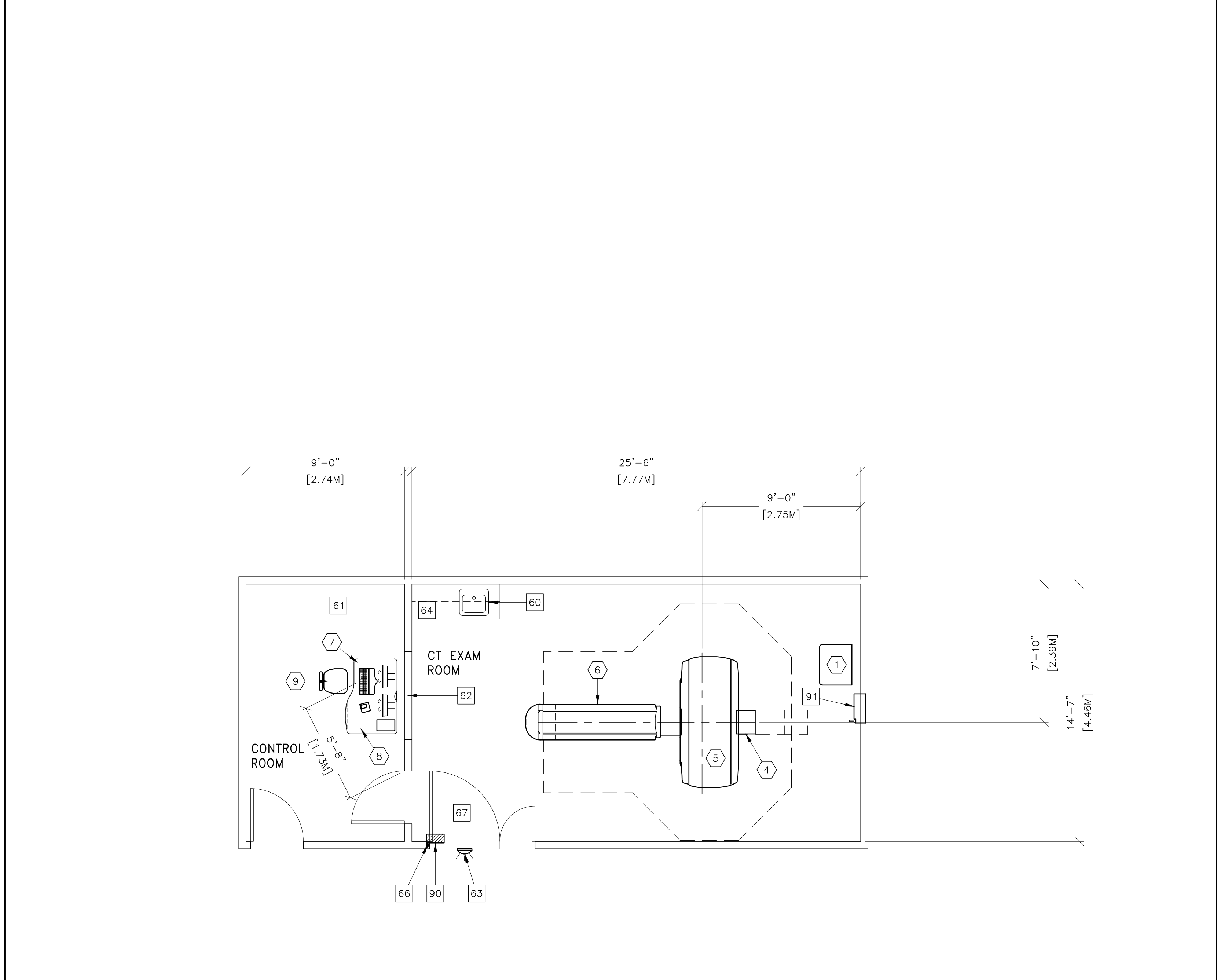
ITEM NO.	QUANTITY ORDERED	REFER TO SHEET "D"	ITEM DESCRIPTION (* = EXISTING/REINSTALL)	WEIGHT	HEAT OUTPUT (PER HOUR)	DETAIL NO.	STRC PLAN	ELEC PLAN
10	1		OPTIONAL CONSOLE					
11	1		OPTIONAL CHAIR					

THE FOLLOWING ITEMS, WHICH HAVE BEEN ORDERED FROM GE HEALTHCARE, ARE TO BE INSTALLED BY THE CUSTOMER OR HIS CONTRACTOR.

ITEM NO.	QUANTITY ORDERED	REFER TO SHEET "D"	ITEM DESCRIPTION (* = EXISTING/REINSTALL)	WEIGHT	HEAT OUTPUT (PER HOUR)	DETAIL NO.	STRC PLAN	ELEC PLAN
12	1		OPTIONAL CONSOLE					
13	1		OPTIONAL CHAIR					

SCALE: 1/4" = 1'-0" EQUIPMENT LAYOUT RECOMMENDED CEILING HEIGHT = 9'-0"

This equipment layout indicates the placement and interconnection of the indicated equipment components. There may be federal, state, and/or local requirements that could impact the placement of these components. It remains the Customer's responsibility for ensuring the site and final equipment placement complies with all applicable federal, state, and/or local requirements.



ANCILLARY ITEMS

CUSTOMER/CONTRACTOR SUPPLIED AND INSTALLED ITEMS

ITEM NO.	ITEM DESCRIPTION (* INDICATES EXISTING)
60	COUNTER TOP WITH SINK, BASE AND WALL CABINETS
61	COUNTER TOP FOR EQUIPMENT-MINIMUM DEPTH 30 IN. OR ADDITIONAL SHELVING MAY BE REQUIRED. PROVIDE GROMMETTED OPENINGS AS REQUIRED TO ROUTE INTERCONNECT CABLES TO RACEWAY BELOW COUNTERTOP.
62	LEAD GLASS WINDOW
63	X-RAY ON WARNING LIGHT - AVAILABLE FROM GE SUPPLY CALL: 800-200-9760 GE CAT. NO. WX1ABW-DF-XIU
64	CASEWORK REQUIRED WITH A MINIMUM OF 16 CUBIC FEET TO STORE ALL SERVICE MATERIALS
65	OPERATOR'S CHAIR
66	DOOR LIMIT SWITCH (REQUIRED IN SOUTH CAROLINA, OTHERWISE NEEDED ONLY IF REQUIRED BY STATE/LOCAL CODES)
67	MINIMUM DOOR OPENING FOR EQUIPMENT DELIVERY IS 44 IN. W x 82 IN. H (1118mm x 2108mm). CONTINGENT ON A 96 IN. (2438mm) CORRIDOR WIDTH

THE FOLLOWING ITEMS ARE AVAILABLE FROM GE HEALTHCARE TECHNOLOGIES. CONTACT YOUR LOCAL GE HEALTHCARE SERVICE REPRESENTATIVE FOR PRICING AND AVAILABILITY.

90	X-RAY ROOM WARNING LIGHT CONTROL PANEL REFERENCE JUNCTION POINT 'WLC' ON SHEET 'E1' FOR DETAILED DESCRIPTION -E4502RL FOR WARNING LIGHT CONTROL ONLY.
91	MAIN DISCONNECT CONTROL GEMS CAT. NO. E4502AE. 125 lbs. SEE DETAIL E4502AE.

GENERAL SPECIFICATIONS

- THE REQUIRED CEILING HEIGHT INDICATED ON THESE PLANS IS TO ENSURE EQUIPMENT FUNCTION IS NOT INHIBITED. CONSULT WITH YOUR LOCAL GEHC SPECIALIST REGARDING ACCEPTABILITY OF OTHER CEILING HEIGHTS.
- CHECK ALL DOOR OPENINGS AND HALLWAYS FROM DELIVERY LOCATION TO WHERE EQUIPMENT IS TO BE INSTALLED TO ENSURE THE ROUTE PHYSICALLY AND STRUCTURALLY WILL ACCOMMODATE THE EQUIPMENT AS SHIPPED.
- RADIATION PROTECTION REQUIREMENTS ARE NOT INDICATED ON THIS PLAN. WHERE NEEDED PER NATIONAL OR LOCAL CODE THEY SHALL BE SPECIFIED BY A QUALIFIED RADIOLOGICAL PHYSICIST.
- THE DEVELOPMENT OF THE EQUIPMENT LAYOUT, ROOM DIMENSIONS, MECHANICAL AND ELECTRICAL SUGGESTIONS IS PREDICATED UPON THE BEST INFORMATION OBTAINABLE FROM THE SITE, COUPLED WITH THE CUSTOMER'S KNOWN DESIRES. ARCHITECTURAL OR ELECTRICAL CHANGES INCLUDING RELOCATION OF EQUIPMENT ILLUSTRATED ON THIS DRAWING IS ALLOWED ONLY WITH NOTIFICATION, IN WRITING, AND REVIEW BY GEHC SERVICE DEPARTMENT. EQUIPMENT OPERATION, SERVICEABILITY, AND RESTRICTING CABLE LENGTHS, ETC. MAKE THIS ESSENTIAL FOR A PROPER IS. GEHC RESERVES THE RIGHT TO MAKE ON THE JOB CHANGES BECAUSE OF CUSTOMER REQUIREMENTS AND/OR OBSTACLES IN CONSTRUCTION, ETC..
- ALL WORK TO BE IN COMPLIANCE WITH NATIONAL AND LOCAL BUILDING SAFETY CODES.
- DIMENSIONS ARE TO FINISHED SURFACES OF ROOM

SITE ENVIRONMENT SPECIFICATIONS

- AMBIENT OPERATING TEMPERATURE:
 - SCAN ROOM: TEMPERATURE RANGE 64°-79° F (18°-26° C)
 - CONTROL ROOM: MAINTAIN TEMPERATURE AT 64°-79° F (18°-26° C)
 - EQUIPMENT ROOM (IF SEPARATE): TEMPERATURE RANGE 64°-79° F (18°-26° C)
- HUMIDITY: 30 TO 60 PERCENT NON-CONDENSING DURING OPERATION (ALL AREAS)
- MAXIMUM TEMPERATURE RATE OF CHANGE OF 5° F (3° C)/HOUR.
- MAXIMUM RELATIVE HUMIDITY RATE OF CHANGE IS 5 PER CENT RH/HOUR.
- ALTITUDE: NOT TO EXCEED 7,875 FT. (2400M) ABOVE SEA LEVEL.
- THE ENVIRONMENT FOR THE ELECTRONICS CABINET MUST BE CONTROLLED SO THE ABOVE RESTRICTIONS ARE NOT EXCEEDED.
- DO NOT RESTRICT THE AIR INTAKE OR AIR EXHAUST OF THE SYSTEM COMPONENTS.
- ENVIRONMENTAL CONDITIONS LISTED ABOVE MUST BE MAINTAINED AT ALL TIMES INCLUDING FOR EXAMPLE OVERNIGHT, WEEKENDS, AND HOLIDAYS.

MAGNETIC INTERFERENCE SPECIFICATIONS

- CT GANTRY MUST BE LOCATED IN AMBIENT STATIC MAGNETIC FIELDS OF LESS THAN 1 GAUSS TO GUARANTEE SPECIFIED IMAGING PERFORMANCE. AMBIENT AC MAGNETIC FIELDS MUST BE BELOW 0.01 GAUSS PEAK.
- CT COMPUTER EQUIPMENT MUST BE LOCATED IN AMBIENT STATIC MAGNETIC FIELDS OF LESS THAN TEN GAUSS TO GUARANTEE DATA INTEGRITY.
- CT CONTROL EQUIPMENT MUST BE LOCATED IN AMBIENT STATIC MAGNETIC FIELDS OF LESS THAN LISTED BELOW TO OBTAIN SPECIFIED GEOMETRIC LINEARITY.
 - CONSOLE/COMPUTER 10 GAUSS

GE Healthcare
Healthcare Project Implementation - Design Center
Minneapolis, MN

SHEET TITLE: EQUIPMENT LAYOUT
MODALITY TYPE: DISCOVERY CT750 HD
THIS PLAN IS SUBMITTED TO SURVEY LOCATION OF GE HEALTHCARE EQUIPMENT AND ASSOCIATED ELECTRICAL WIRING DETAILS AND ROOM ARRANGEMENTS. IN PREPARING THIS PLAN, EVERY EFFORT HAS BEEN MADE TO CONFORM DETAILS TO THE ACTUAL CONSTRUCTION PURPOSES AND THE COMPANY CANNOT ACCEPT RESPONSIBILITY FOR ANY DAMAGES RESULTING THEREFROM.

PROJECT TITLE:
6-68f
TYPICAL LAYOUT
(W/ GT1700 TABLE)

PROJECT	REVISION
6-68f	07

DATE: 19.May.16
DRAWN BY: DMH
CHECKED BY: DJP

REVISION HISTORY:

SHEET
A1

TYPICAL WALL SUPPORT ELEVATIONS

SCALE: 1/4" = 1'-0"

STRUCTURAL LAYOUT

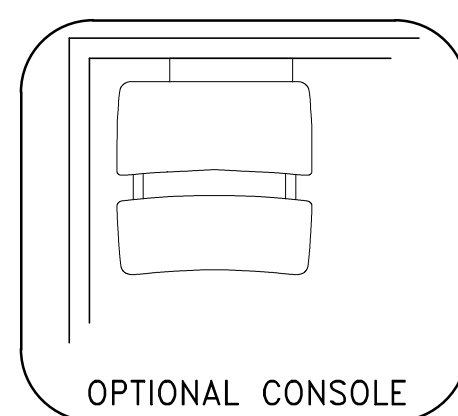
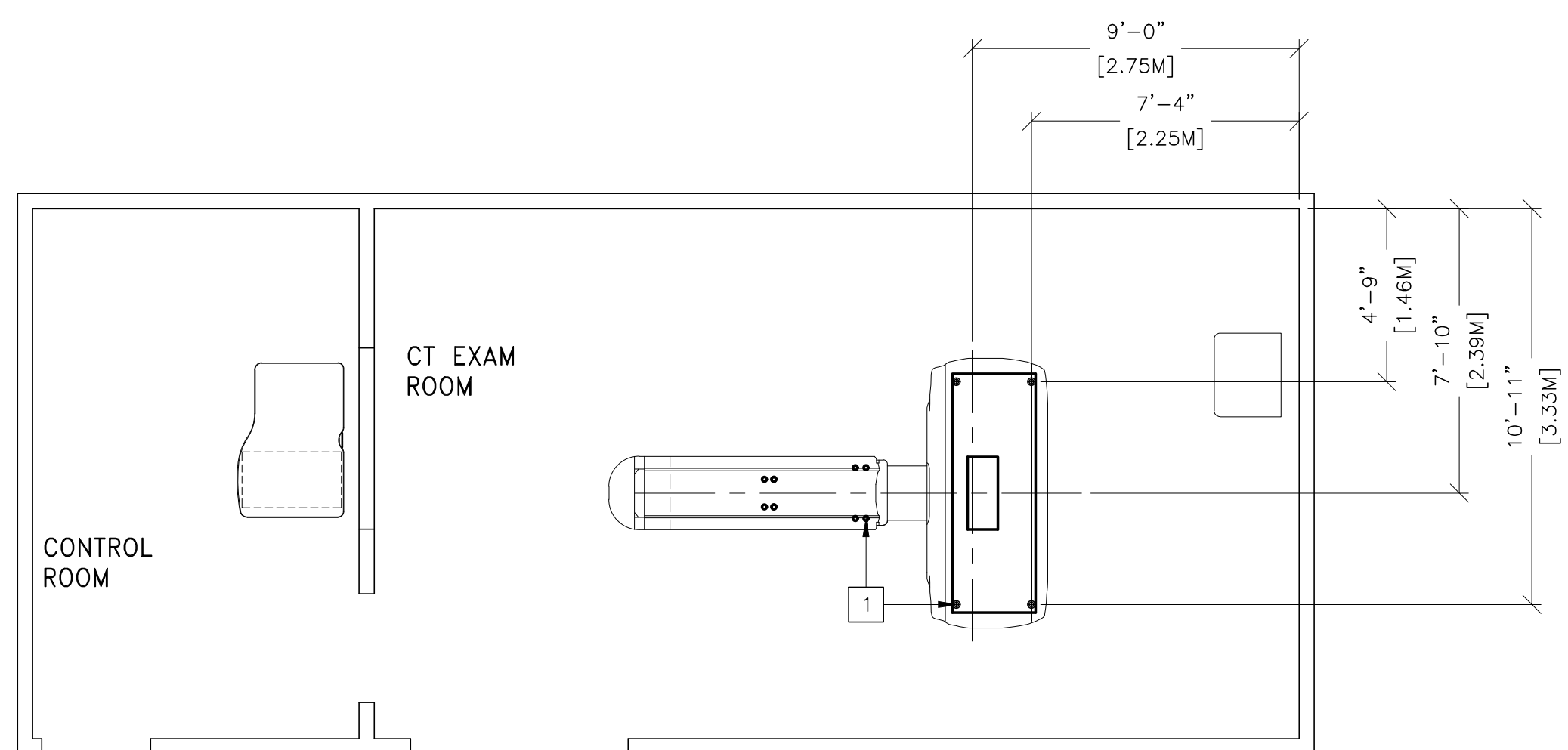
RECOMMENDED CEILING HEIGHT = 9'-0"

STRUCTURAL SUPPORT METHODS

CUSTOMER/CONTRACTOR SUPPLIED AND INSTALLED ITEMS

ITEM NO. ITEM DESCRIPTION (* INDICATES EXISTING)

1 LEVELING AREA FOR GANTRY AND TABLE SEE DETAIL B78-64 ON SHEET S2.



STRUCTURAL NOTES

- ALL STEEL WORK AND PARTS NECESSARY TO SUPPORT CEILING MOUNTED EQUIPMENT IS TO BE SUPPLIED BY THE CUSTOMER OR HIS CONTRACTORS.
- METHODS OF SUPPORT FOR THE STEELWORK THAT WILL PERMIT ATTACHMENT TO STRUCTURAL STEEL OR THROUGH BOLTS IN CONCRETE CONSTRUCTION SHOULD BE FAVORED. DO NOT USE CONCRETE OR MASONRY ANCHORS IN DIRECT TENSION.
- ALL UNITS THAT ARE WALL MOUNTED OR WALL SUPPORTED ARE TO BE PROVIDED WITH SUPPORTS WHERE NECESSARY. WALL SUPPORTS ARE TO BE SUPPLIED AND INSTALLED BY THE CUSTOMER OR HIS CONTRACTORS. SEE PLAN AND DETAIL SHEETS FOR SUGGESTED LOCATIONS AND MOUNTING HOLE LOCATIONS.
- ALL CEILING MOUNTED FIXTURES, AIR VENTS, SPRINKLERS, ETC. TO BE FLUSH MOUNTED, OR SHALL NOT EXTEND MORE THAN 1/4" BELOW THE FINISHED CEILING.
- FLOOR SLABS ON WHICH EQUIPMENT IS TO BE INSTALLED MUST BE LEVEL TO 1/4" in 10'-0"
- DIMENSIONS ARE TO FINISHED SURFACES OF ROOM.
- CUSTOMERS CONTRACTOR MUST PROVIDE ALL PENETRATIONS IN POST TENSION FLOORS.
- CUSTOMERS CONTRACTOR MUST PROVIDE AND INSTALL ANY NON-STANDARD ANCHORING. DOCUMENTS FOR STANDARD ANCHORING METHODS ARE INCLUDED WITH GE EQUIPMENT DRAWINGS FOR GEOGRAPHIC AREAS THAT REQUIRE SUCH DOCUMENTATION.
- CUSTOMERS CONTRACTOR MUST PROVIDE AND INSTALL HARDWARE FOR "THROUGH THE FLOOR" ANCHORING AND/OR ANY BRACING UNDER ACCESS FLOORS. THIS CONTRACTOR MUST ALSO PROVIDE FLOOR DRILLING THAT CANNOT BE COMPLETED BECAUSE OF AN OBSTRUCTION ENCOUNTERED WHILE DRILLING BY THE GE INSTALLER SUCH AS REBAR ETC.
- IT IS THE CUSTOMER'S RESPONSIBILITY TO PERFORM ANY FLOOR OR WALL PENETRATIONS THAT MAY BE REQUIRED. THE CUSTOMER IS ALSO RESPONSIBLE FOR ENSURING THAT NO SUBSURFACE UTILITIES (E.G., ELECTRICAL OR ANY OTHER FORM OF WIRING, CONDUITS, PIPING, DUCT WORK OR STRUCTURAL SUPPORTS (I.E. POST TENSION CABLES OR REBAR)) WILL INTERFERE OR COME IN CONTACT WITH SUBSURFACE PENETRATION OPERATIONS (E.G. DRILLING AND INSTALLATION OF ANCHORS/SCREWS) PERFORMED DURING THE INSTALLATION PROCESS. TO ENSURE WORKER SAFETY, GE INSTALLERS WILL PERFORM SURFACE PENETRATION OPERATIONS ONLY AFTER THE CUSTOMER'S VALIDATION AND COMPLETION OF THE "GE SURFACE PENETRATION PERMIT"

GE Healthcare
Healthcare Project Implementation - Design Center
Milwaukee, Wisconsin

SHEET TITLE: STRUCTURAL LAYOUT
MODALITY TYPE: DISCOVERY CT750 HD

THIS PLAN IS SUBMITTED TO SUGGEST LOCATION OF GE HEALTHCARE EQUIPMENT AND ASSOCIATED APPARATUS, ELECTRICAL WIRING DETAILS AND ROOM ARRANGEMENTS. IN PREPARING THIS PLAN, EVERY EFFORT HAS BEEN MADE TO CONFORM DETAILS TO CUSTOMER'S REQUIREMENTS. TO THE EXTENT POSSIBLE, THE COMPANY HAS USED OR OBTAINED INFORMATION FROM THE CUSTOMER AND THE COMPANY CANNOT ACCEPT RESPONSIBILITY FOR ANY DAMAGES RESULTING THEREFROM.

PROJECT TITLE:
6-68f
TYPICAL LAYOUT
(W/ GT1700 TABLE)

PROJECT	REVISION
6-68f	07

DATE: 19.May.16
DRAWN BY: DMH
CHECKED BY: DJP

REVISION HISTORY:

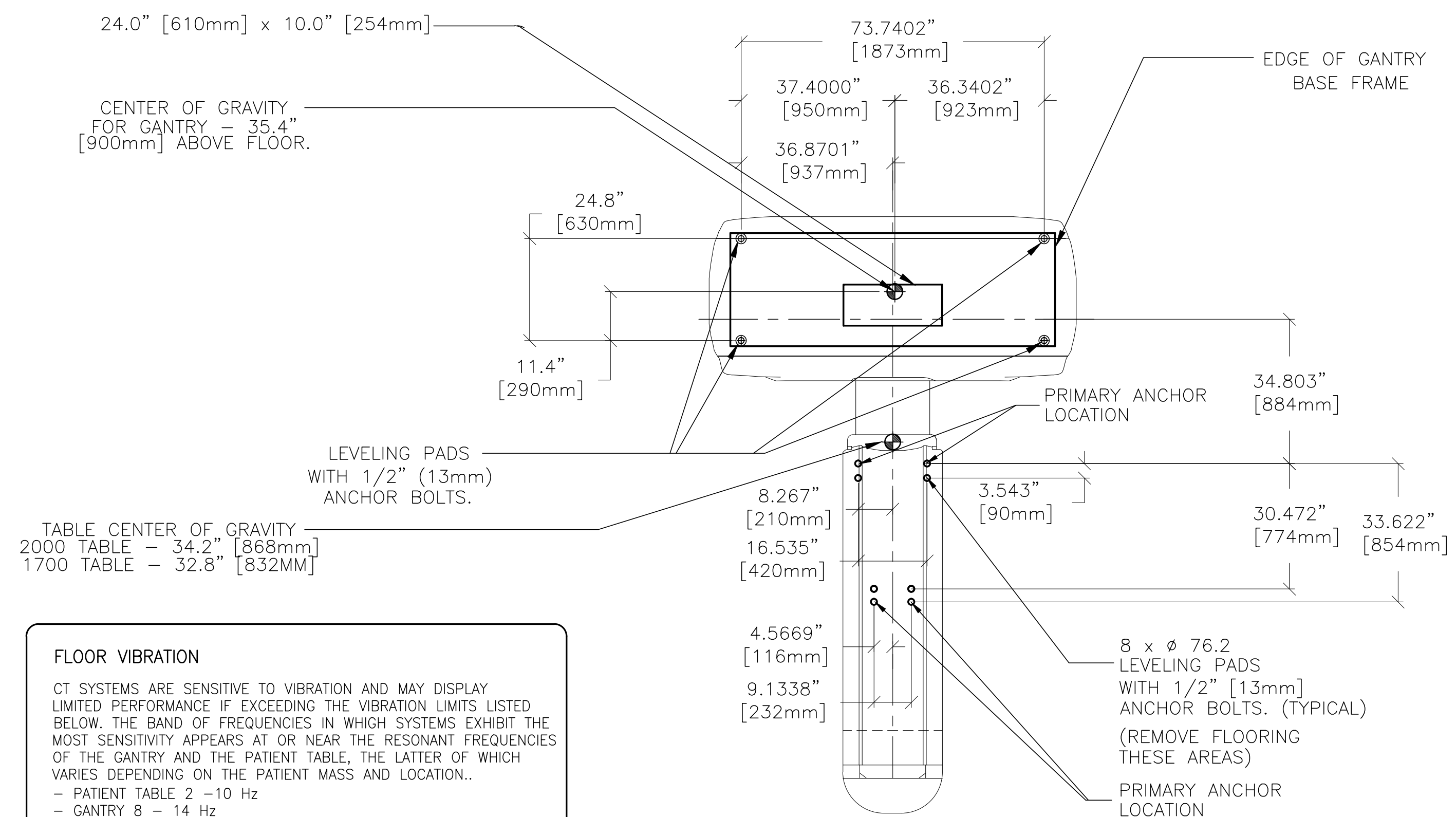
SHEET
S1

RQ - 160798 PIM R14

DISCOVERY CT SERIES GANTRY AND TABLE ANCHOR/LEVELING

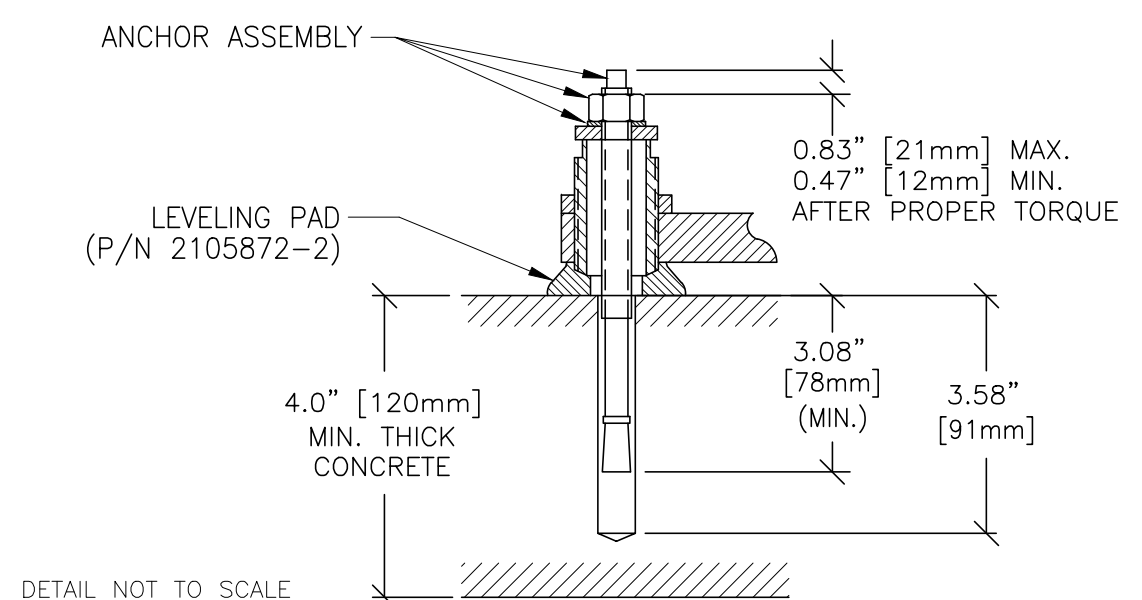
B7867

REV. DATE: 27.Mar.15



FLOOR VIBRATION
 CT SYSTEMS ARE SENSITIVE TO VIBRATION AND MAY DISPLAY LIMITED PERFORMANCE IF EXCEEDING THE VIBRATION LIMITS LISTED BELOW. THE BAND OF FREQUENCIES IN WHICH SYSTEMS EXHIBIT THE MOST SENSITIVITY APPEARS AT OR NEAR THE RESONANT FREQUENCIES OF THE GANTRY AND THE PATIENT TABLE, THE LATTER OF WHICH VARIES DEPENDING ON THE PATIENT MASS AND LOCATION.
 - PATIENT TABLE 2 - 10 Hz
 - GANTRY 8 - 14 Hz
 PLEASE VERIFY WITH PIM FOR LATEST VIBRATION SPECIFICATIONS

EQUIPMENT LOCATION
 TO MINIMIZE THE INTERFERENCE, THE SYSTEM SHOULD BE PLACED ON A SOLID FLOOR, LOCATED AS FAR AS POSSIBLE FROM THE VIBRATION SOURCES, SUCH AS PARKING LOTS, ROADWAYS, SUBWAYS, TRAINS, HALLWAYS, ELEVATORS, AND HOSPITAL PHYSICAL PLANTS. PLEASE NOTE THAT OTHER ITEMS NOT LISTED COULD ALSO BE POTENTIAL SOURCES OF VIBRATION.



SHEET TITLE: STRUCTURAL DETAILS
 MODALITY TYPE: DISCOVERY CT750 HD
 THIS PLAN IS SUBMITTED TO SUGGEST LOCATION OF GE HEALTHCARE EQUIPMENT AND ASSOCIATED ELECTRICAL WIRING DETAILS AND ROOM ARRANGEMENTS. IN PREPARING THIS PLAN, EVERY EFFORT HAS BEEN MADE TO CONFORM DETAILS TO ALL APPLICABLE CODES AND REGULATIONS. GE HEALTHCARE DOES NOT ACCEPT LIABILITY FOR ANY DAMAGES RESULTING THEREFROM.

PROJECT TITLE:
6-68f
TYPICAL LAYOUT
 (W/ GT1700 TABLE)

PROJECT	REVISION
6-68f	07

DATE: 19.May.16
 DRAWN BY: DMH
 CHECKED BY: DJP

REVISION HISTORY:

SHEET
S2

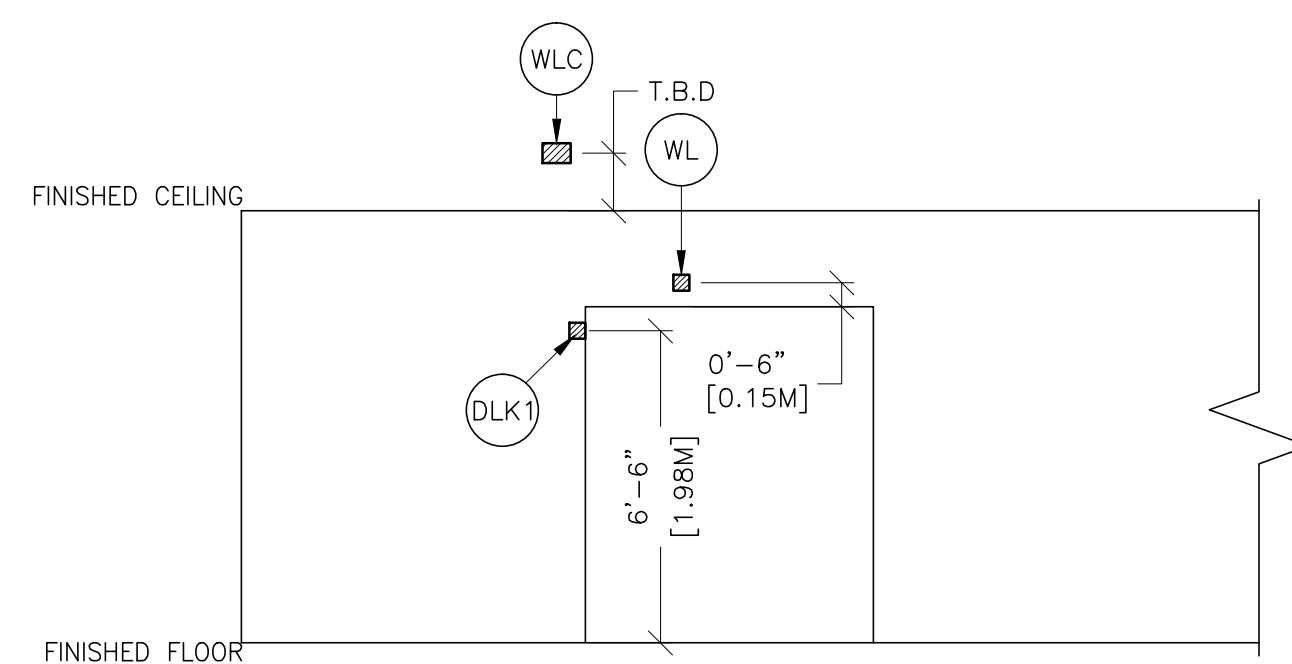
PIM R14
 RQ - 160798

SCALE: 1/4" = 1'-0"

ELECTRICAL PLAN

RECOMMENDED CEILING HEIGHT = 9'-0"

JUNCTION POINT DESCRIPTIONS

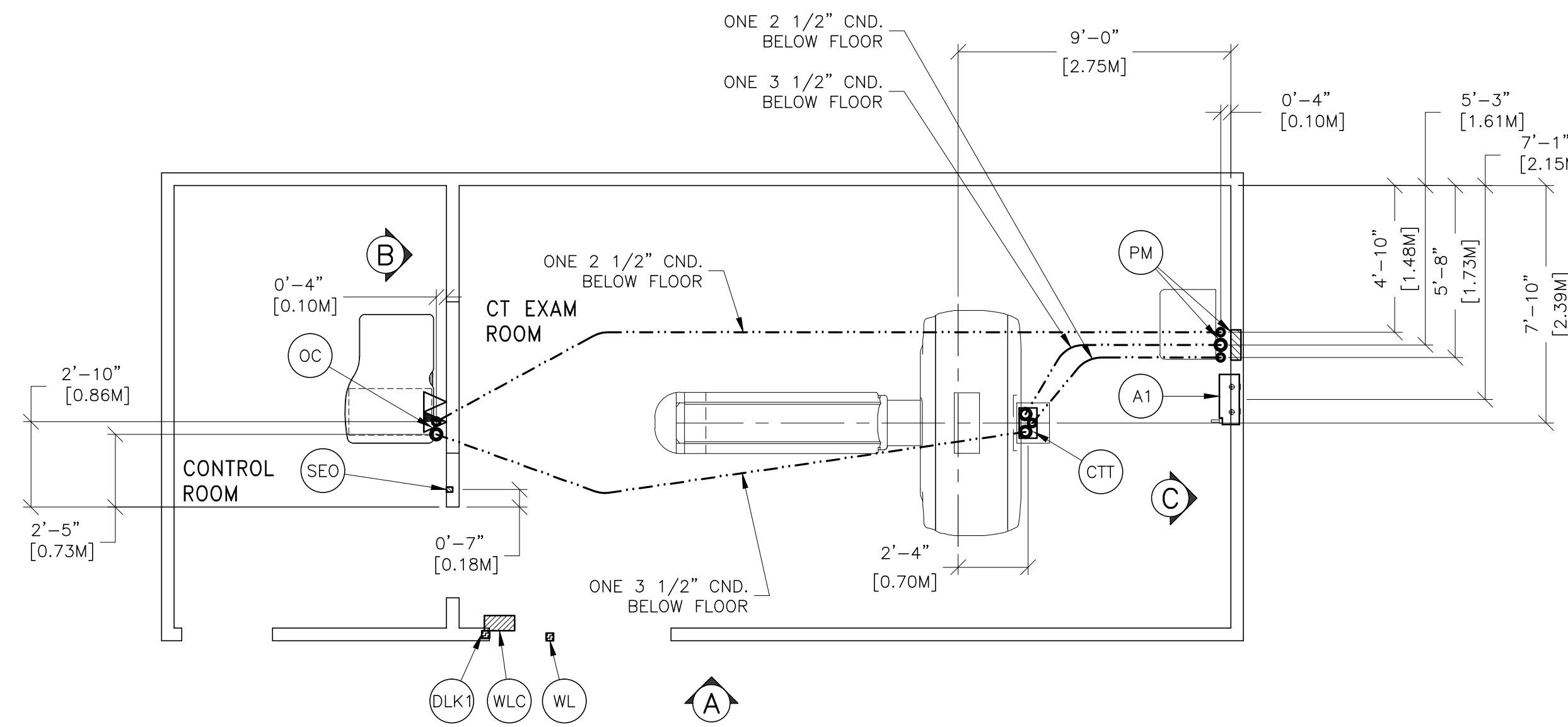
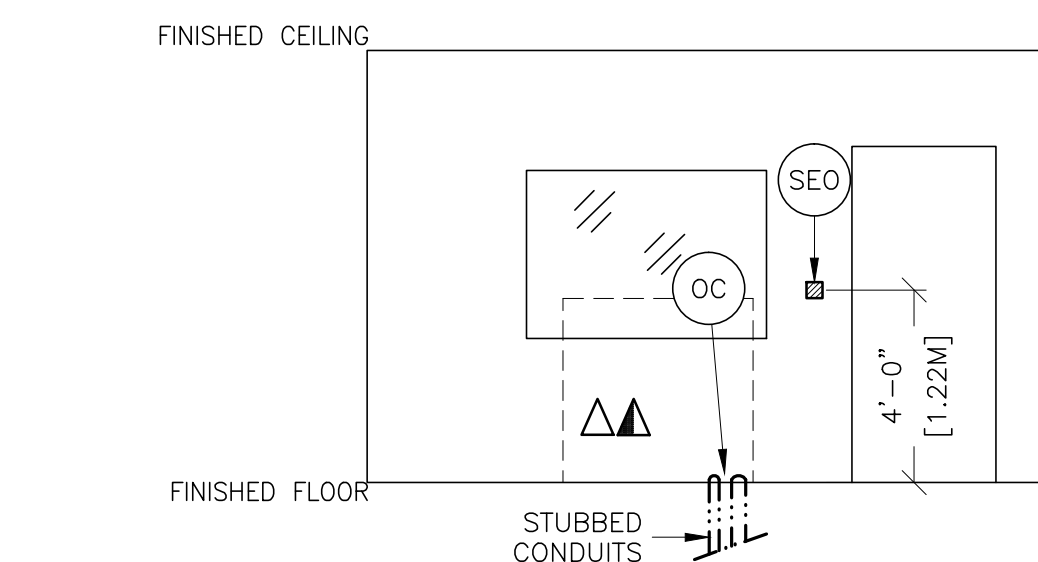


ELECTRICAL OUTLET LEGEND
CUSTOMER/CONTRACTOR SUPPLIED AND INSTALLED ITEMS. HEIGHT ABOVE FLOOR DETERMINED BY LOCAL CODES UNLESS OTHERWISE SPECIFIED.

- △ DEDICATED TELEPHONE LINE(S) (SEE ELECTRICAL DETAIL ELEC-1 OR ELEC-67)
- ▲ NETWORK OUTLET (SEE ELECTRICAL DETAILS ELEC-83 AND ELEC-84 OR ELEC-87)

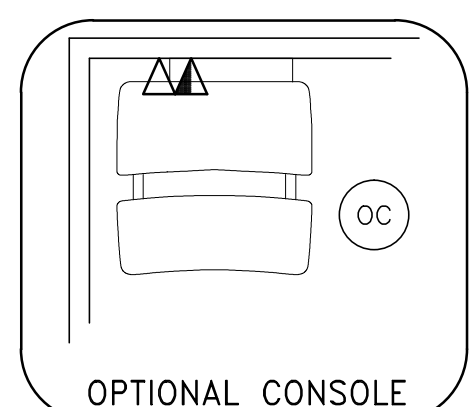
- JUNCTION POINT NOTES**
- ALL JUNCTION BOXES, CONDUIT, DUCT, DUCT DIVIDERS, SWITCHES, CIRCUIT BREAKERS, CABLE TRAY, ETC., ARE TO BE SUPPLIED AND INSTALLED BY CUSTOMER'S ELECTRICAL CONTRACTOR.
 - CONDUIT AND DUCT RUNS SHALL HAVE SWEEP RADIUS BENDS.
 - CONDUITS AND DUCT ABOVE CEILING OR BELOW FINISHED FLOOR MUST BE INSTALLED AS NEAR TO CEILING OR FLOOR AS POSSIBLE TO REDUCE RUN LENGTH.
 - CEILING MOUNTED JUNCTION BOXES ILLUSTRATED ON THIS PLAN MUST BE INSTALLED FLUSH WITH FINISHED CEILING.
 - ALL DUCTWORK MUST MEET THE FOLLOWING REQUIREMENTS:
 - DUCTWORK SHALL BE METAL WITH DIVIDERS AND HAVE REMOVABLE, ACCESSIBLE COVERS.
 - DUCTWORK SHALL BE CERTIFIED/RATED FOR ELECTRICAL POWER PURPOSES.
 - DUCTWORK SHALL BE ELECTRICALLY AND MECHANICALLY BONDED TOGETHER IN AN APPROVED MANNER.
 - PVC AS A SUBSTITUTE MUST BE USED IN ACCORDANCE WITH ALL LOCAL AND NATIONAL CODES.
 - GENERAL CONTRACTOR TO INSERT PULL CORDS FOR ALL CABLE RUN CONDUITS BETWEEN THE EQUIPMENT ROOM AND THE OPERATORS CONTROL ROOM.
 - 10 FOOT PIGTAILS AT ALL JUNCTION POINTS.
 - ALL WIRING MUST BE THIN OR TFFN STRANDED COPPER THERMOPLASTIC 600 VOLT OR EQUIVALENT INSULATION. **ALUMINUM OR SOLID WIRES ARE NOT ALLOWED.**
 - GROUNDING IS CRITICAL TO EQUIPMENT FUNCTION AND PATIENT SAFETY. SITE MUST CONFORM TO WIRING SPECIFICATIONS SHOWN ON THIS PLAN.

POINT	DESCRIPTION	QTY.	THE FOLLOWING MATERIALS ARE TO BE SUPPLIED AND INSTALLED BY THE CUSTOMER'S ELECTRICAL CONTRACTOR	
			HARDWARE	DETAIL NO., SHT. E3
A1	MAIN DISCONNECT AVAILABLE FROM GEHC CALL 800-279-7525 OR LOCAL GE INSTALLATION PROJECT MGR.	1	125 AMP FUSED DISCONNECT AND MAGNETIC CONTACTOR GEHC CAT. NO. E4502AE 1" SED PUSHBUTTON AND COVER INCLUDED.	ELEC-135
CTT	CT SCANNER	2	3 1/2 IN. DIA. BUSHING & LOCKNUT 1 1/2 IN. DIA. BUSHING & LOCKNUT	ELEC-9
DLK1	DOOR SWITCH (NEEDED ONLY IF REQUIRED BY STATE/LOCAL CODES)	1	ROOM DOOR INTERLOCK LIMIT SWITCH 1" IN FRAME - NORMALLY OPEN (24V) 1 SINGLE GANG BOX	ELEC-9
OC	OPERATORS CONSOLE	1	3 1/2 IN. DIA. BUSHING & LOCKNUT 1 1/2 IN. DIA. BUSHING & LOCKNUT	ELEC-9
OC	OPERATORS CONSOLE	1	3 1/2 IN. DIA. BUSHING & LOCKNUT 1 1/2 IN. DIA. BUSHING & LOCKNUT	ELEC-9
PM	POWER DISTRIBUTION UNIT	1	SPLIT COVERPLATE 3 1/2 IN. DIA. BUSHING & LOCKNUT 1 1/2 IN. DIA. BUSHING & LOCKNUT 1 IN. 90 DEGREE CONNECTOR SUITABLE CONNECTORS FLEXIBLE METAL CONDUIT 1/2 X 1/2 X 4 IN. BDX 16 FT. LENGTH OF 1/2 IN. FLEXIBLE METAL CONDUIT	ELEC-9 ELEC-22
SED	EMERGENCY OFF	1	SINGLE GANG 2 1/2 IN. DEEP FLUSH MOUNTED JUNCTION BOX.	ELEC-16
WL	WARNING LIGHT	1	X-RAY ON-INCANDESCENT LIGHT FIXTURE DO NOT USE FLUORESCENT FIXTURES GE CAT. NO. WX1ABW-DF-XIU	ELEC-72
WLC	WARNING LIGHT CONTROLLER AVAILABLE FROM GEHC CALL 800-279-7525 OR LOCAL GE INSTALLATION PROJECT MGR.	1	E4502RL WARNING LIGHT CONTROL OR EQUIVALENT MAX. 24V CONTROLLER	ELEC-72



A

B



FEEDER TABLE - CT LightSpeed Pro16/RT/CT, DISCOVERY CT Series/590, OPTIMA CT580

o CALCULATIONS BASED UPON NOMINAL VOLTAGE, WIRE SIZE IN AWG.
o MINIMUM FEEDER SIZES FROM DISTRIBUTION TRANS. TO POWER DISTRIBUTION UNIT.
o THE RECOMMENDED GROUNDING CONDUCTOR () WILL BE A 1/0 MINIMUM. THIS GROUND WILL RUN FROM THE EQUIPMENT BACK TO THE POWER SOURCE/MAIN GROUNDING POINT AND ALWAYS TRAVEL IN THE SAME CONDUIT WITH THE FEEDERS AND NEUTRAL.
o NEUTRAL MUST BE TERMINATED PRIOR TO OR INSIDE THE MAIN DISCONNECT PANEL AND NOT BROUGHT INTO THE POWER DISTRIBUTION UNIT.
o FOR A FULL SYSTEM UPS REFER TO ELECTRICAL DETAILS FOR UPS FEEDER WIRES.

RUN LENGTH IN FEET	POWER SUPPLY VOLTAGE					
	342-418 380	360-440 400	378-462 420	396-484 440	414-506 460	432-528 480
50	1/0 (1/0)	1/0 (1/0)	1/0 (1/0)	1 (1/0)	1 (1/0)	1 (1/0)
100	1/0 (1/0)	1/0 (1/0)	1/0 (1/0)	1 (1/0)	1 (1/0)	1 (1/0)
150	1/0 (1/0)	1/0 (1/0)	1/0 (1/0)	1 (1/0)	1 (1/0)	1 (1/0)
200	1/0 (1/0)	1/0 (1/0)	1/0 (1/0)	1 (1/0)	1 (1/0)	1 (1/0)
250	2/0 (1/0)	2/0 (1/0)	1/0 (1/0)	1/0 (1/0)	1 (1/0)	1 (1/0)
300	3/0 (1/0)	3/0 (1/0)	2/0 (1/0)	2/0 (1/0)	1/0 (1/0)	1/0 (1/0)
350	4/0 (1/0)	3/0 (1/0)	3/0 (1/0)	2/0 (1/0)	2/0 (1/0)	1/0 (1/0)
400	250M (1/0)	4/0 (1/0)	3/0 (1/0)	3/0 (1/0)	3/0 (1/0)	2/0 (1/0)

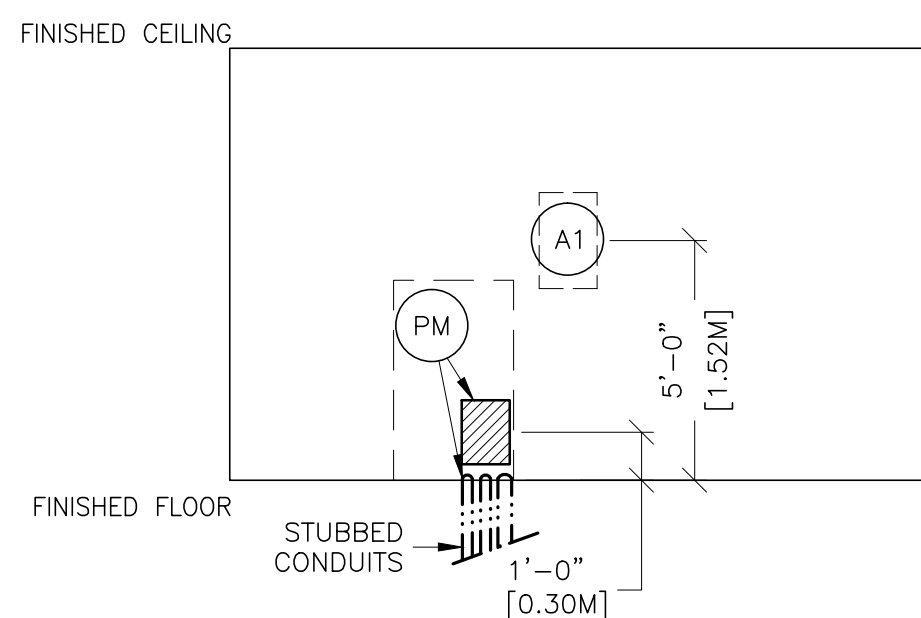
REV. DATE: 08.Oct.14

ADDITIONAL CONDUIT RUNS FOR ALL LIGHTSPEED, DISCOVERY, BRIGHTSPEED, OPTIMA SYSTEMS, REVOLUTION EVO, REVOLUTION DISCOVERY CT, HISPEED QX/1, & BRVO 385 (BY CONTRACTOR)

CONDUITS REQUIRED FOR BASE SYSTEM (CONDUITS ARE LOCATED ABOVE CEILING)

TO	FROM	CONDUIT SIZE
WL	TO WLC	ONE 1/2" CND.
WLC	TO PM	ONE 1/2" CND.
PM	TO A1	ONE CND. AS REQ'D
A1	TO SE0	ONE 1/2" CND.
A1	TO FEEDER	ONE CND. AS REQ'D
WLC	TO 120-V 1 ϕ POWER	CND. AS REQ'D
DLK1	TO PM	ONE 1/2" CND.

NOTE: SEE E2 PAGE FOR MAXIMUM RUN LENGTHS



C

GE Healthcare
Healthcare Project Implementation - Design Center
Minneapolis, MN

SHEET TITLE: ELECTRICAL LAYOUT
MODALITY TYPE: DISCOVERY CT750 HD

THIS PLAN IS SUBMITTED TO SURVEY LOCATION OF GE HEALTHCARE EQUIPMENT AND ASSOCIATED APPARATUS. ELECTRICAL WIRING DETAILS AND ROOM ARRANGEMENTS IN PREPARING THIS PLAN, EVERY EFFORT HAS BEEN MADE TO CONFORM TO DETAILS AND REQUIREMENTS OF THE PROJECT. THE COMPANY CANNOT BE HELD RESPONSIBLE FOR ANY DAMAGES RESULTING THEREFROM.

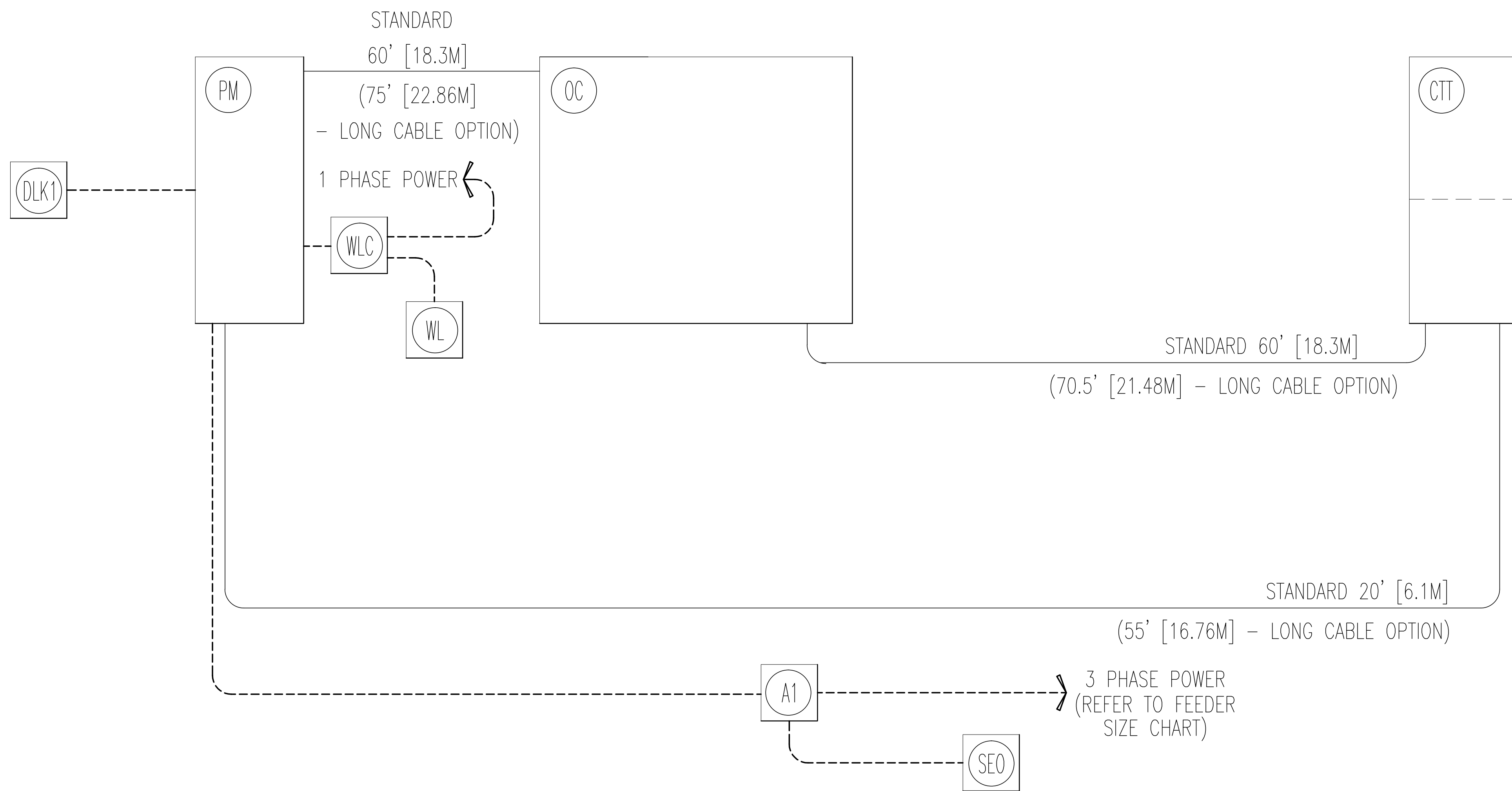
PROJECT TITLE: 6-68f
TYPICAL LAYOUT
(W/ GT1700 TABLE)

PROJECT	REVISION
6-68f	07
DATE:	19.May.16
DRAWN BY:	DMH
CHECKED BY:	DJP

REVISION HISTORY:

SHEET
E1

INTERCONNECT DIAGRAM



POWER SPECIFICATIONS

CT LightSpeed Pro 16/RT/VCT, DISCOVERY CT Series/590, OPTIMA CT580

(REV. DATE 08.Oct.14)

VOLTAGE PRIMARY SOURCE IS REQUIRED FOR ALL INSTALLATIONS. RANGE OF LINE VOLTAGES: NOMINAL LINE VOLTAGE OF 380 TO 480, 3 PHASE, 50 OR 60 Hz. REQUIRED POWER SUPPLY: WYE-CONNECTED

TABLE A ALLOWABLE INPUT VOLTAGES/CURRENT DEMAND

NOMINAL VOLTAGE	ABSOLUTE RANGE	CURRENT (AMPS)		MINIMUM STANDARD OVERCURRENT PROTECTION
		MAXIMUM	CONTINUOUS	
380	342-418	253	38	150-A
400	360-440	241	36	150-A
420	378-462	229	34	150-A
440	396-484	219	33	125-A
460	414-506	209	31	125-A
480	432-528	200	30	125-A

(ALL CALCULATIONS BASED UPON NOMINAL VOLTAGE)

PHASE-BALANCE. PHASE-TO-PHASE VOLTAGES MUST BE WITHIN +2 PERCENT OF THE LOWEST PHASE-TO-PHASE VOLTAGE. MAXIMUM ALLOWABLE TRANSIENT VOLTAGE EXCURSIONS ARE 2.5 PERCENT OF RATED LINE VOLTAGE AT A MAXIMUM DURATION OF 1 CYCLE AND FREQUENCY OF 10 TIMES PER HOUR.

VOLTAGE TRANSIENT OR IMPULSE ON THE INCOMING POWER MUST BE HELD TO A MINIMUM. TRANSIENTS CAUSED BY LIGHTNING, SURGES, LOAD SWITCHING, STATIC ELECTRICITY ETC. CAN CAUSE SCAN ABORTS OR, IN EXTREME INSTANCES, COMPONENT FAILURE IN THE COMPUTER SUBSYSTEM.

POWER DEMAND CONTINUOUS POWER DEMAND = 25 KVA (MAX DEMAND = 150 KVA)

TABLE B MAXIMUM MOMENTARY POWER DEMAND.

DEMAND	CT HiSpeed
kVa *	150
POWER FACTOR AT	0.85

* DEMAND INCLUDES POWER FOR ENTIRE CT SYSTEM. LINE VOLTAGE REGULATION AT MAXIMUM POWER DEMAND MUST BE LESS THAN OR EQUAL TO 6 PERCENT.

DISTRIBUTION TRANSFORMER FOR A SINGLE UNIT INSTALLATION, THE MINIMUM TRANSFORMER SIZE IS 225 KVA. GE DOES NOT RECOMMEND USING A REGULATION DEVICE.

NOTE: THE CT SYSTEM MUST NOT BE POWERED IN A MULTIPLE INSTALLATION WHERE FILM CHANGERS ARE USED. FILM CHANGERS UTILIZE A LARGE NUMBER OF HIGH POWERED CLOSELY SPACED EXPOSURES WHICH MAY COINCIDE WITH THE CT SCAN.

ELECTRICAL NOTES

- NOTE 1: ALL WIRES SPECIFIED SHALL BE COPPER STRANDED, FLEXIBLE, THERMO-PLASTIC, COLOR CODED, CUT 10 FOOT LONG AT OUTLET BOXES, DUCT TERMINATION POINTS OR STUBBED CONDUIT ENDS. ALL CONDUCTORS, POWER, SIGNAL AND GROUND, MUST BE RUN IN A CONDUIT OR DUCT SYSTEM. ELECTRICAL CONTRACTOR SHALL RING OUT AND TAG ALL WIRES AT BOTH ENDS. WIRE RUNS MUST BE CONTINUOUS COPPER STRANDED AND FREE FROM SPLICES. ALUMINUM OR SOLID WIRES ARE NOT ALLOWED.
- NOTE 2: WIRE SIZES GIVEN ARE FOR USE OF EQUIPMENT. LARGER SIZES MAY BE REQUIRED BY LOCAL CODES.
- NOTE 3: IT IS RECOMMENDED THAT ALL WIRES BE COLOR CODED, AS REQUIRED IN ACCORDANCE WITH NATIONAL AND LOCAL ELECTRICAL CODES.
- NOTE 4: CONDUIT SIZES SHALL BE VERIFIED BY THE ARCHITECT, ELECTRICAL ENGINEER OR CONTRACTOR, IN ACCORDANCE WITH LOCAL OR NATIONAL CODES.
- NOTE 5: CONVENIENCE OUTLETS ARE NOT ILLUSTRATED. THEIR NUMBER AND LOCATION ARE TO BE SPECIFIED BY OTHERS. LOCATE AT LEAST ONE CONVENIENCE OUTLET CLOSE TO THE SYSTEM CONTROL, THE POWER DISTRIBUTION UNIT AND ONE ON EACH WALL OF THE PROCEDURE ROOM. USE HOSPITAL APPROVED OUTLET OR EQUIVALENT.
- NOTE 6: GENERAL ROOM ILLUMINATION IS NOT ILLUSTRATED. CAUTION SHOULD BE TAKEN TO AVOID EXCESSIVE HEAT FROM OVERHEAD SPOTLIGHTS. DAMAGE CAN OCCUR TO CEILING MOUNTING COMPONENTS AND WIRING IF HIGH WATTAGE BULBS ARE USED. RECOMMEND LOW WATTAGE BULBS NO HIGHER THAN 75 WATTS AND USE DIMMER CONTROLS (EXCEPT MR). DO NOT MOUNT LIGHTS DIRECTLY ABOVE AREAS WHERE CEILING MOUNTED ACCESSORIES WILL BE PARKED.
- NOTE 7: ROUTING OF CABLE DUCTWORK, CONDUITS, ETC., MUST RUN DIRECT AS POSSIBLE OTHERWISE MAY RESULT IN THE NEED FOR GREATER THAN STANDARD CABLE LENGTHS (REFER TO THE INTERCONNECTION DIAGRAM FOR MAXIMUM USABLE LENGTHS POINT TO POINT).
- NOTE 8: CONDUIT TURNS TO HAVE LARGE, SWEEPING BENDS WITH MINIMUM RADIUS IN ACCORDANCE WITH NATIONAL AND LOCAL ELECTRICAL CODES.
- NOTE 9: A SPECIAL GROUNDING SYSTEM IS REQUIRED IN ALL PROCEDURE ROOMS BY SOME NATIONAL AND LOCAL CODES. IT IS RECOMMENDED IN AREAS WHERE PATIENTS MIGHT BE EXAMINED OR TREATED UNDER PRESENT, FUTURE, OR EMERGENCY CONDITIONS. CONSULT THE GOVERNING ELECTRICAL CODE AND CONFER WITH APPROPRIATE CUSTOMER ADMINISTRATIVE PERSONNEL TO DETERMINE THE AREAS REQUIRING THIS TYPE OF GROUNDING SYSTEM.
- NOTE 10: THE MAXIMUM POINT TO POINT DISTANCES ILLUSTRATED ON THIS DRAWING MUST NOT BE EXCEEDED.
- NOTE 11: PHYSICAL CONNECTION OF PRIMARY POWER TO GE EQUIPMENT IS TO BE MADE BY CUSTOMERS ELECTRICAL CONTRACTOR WITH THE SUPERVISION OF A GE REPRESENTATIVE. THE GE REPRESENTATIVE WOULD BE REQUIRED TO IDENTIFY THE PHYSICAL CONNECTION LOCATION, AND INSURE PROPER HANDLING OF GE EQUIPMENT.
- NOTE 12: GEHC CONDUCTS POWER AUDITS TO VERIFY QUALITY OF POWER BEING DELIVERED TO THE SYSTEM. THE CUSTOMER'S ELECTRICAL CONTRACTOR IS REQUIRED TO BE AVAILABLE TO SUPPORT THIS ACTIVITY.

DIAGRAM KEY

- CUSTOMER/CONTRACTOR SUPPLIED WIRING. ROUTE IN ADEQUATE CONDUIT OR RACEWAY.
- _____ GE FURNISHED CABLE RUNS. ROUTE IN EMPTY CONDUIT OR RACEWAY.
- 59' [18M] MAXIMUM RUN LENGTH BETWEEN JUNCTION POINTS. Feet, [Meters]

GE Healthcare
Healthcare Project Implementation - Design Center
Milwaukee, Wisconsin

SHEET TITLE: ELECTRICAL SPECIFICATIONS
MODALITY TYPE: DISCOVERY CT750 HD

THIS PLAN IS SUBMITTED TO SURVEY LOCATION OF GE HEALTHCARE EQUIPMENT AND ASSOCIATED APPARATUS. ELECTRICAL WIRING DETAILS AND ROOM ARRANGEMENTS IN PREPARING THIS PLAN, EVERY EFFORT HAS BEEN MADE TO CONFORM TO THE ACTUAL CONDITIONS OF THE PROJECT. THE USER OF THIS PLAN SHALL BE RESPONSIBLE FOR ANY DAMAGES RESULTING THEREFROM.

PROJECT TITLE:
6-68f
TYPICAL LAYOUT
(W/ GT1700 TABLE)

PROJECT	REVISION
6-68f	07

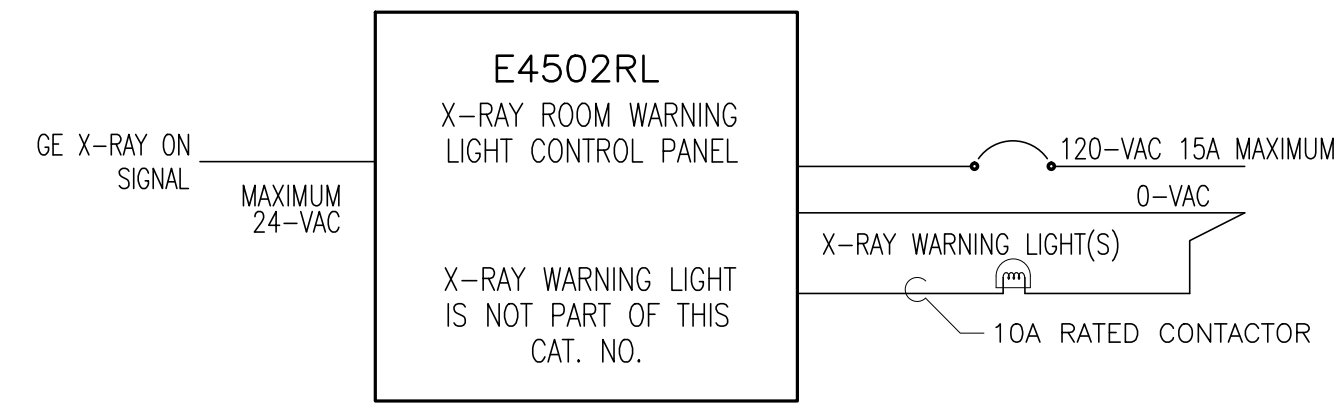
DATE: 19.May.16
DRAWN BY: DMH
CHECKED BY: DJP

REVISION HISTORY:

SHEET
E2

ELECTRICAL DETAIL
WARNING LIGHT DIAGRAM

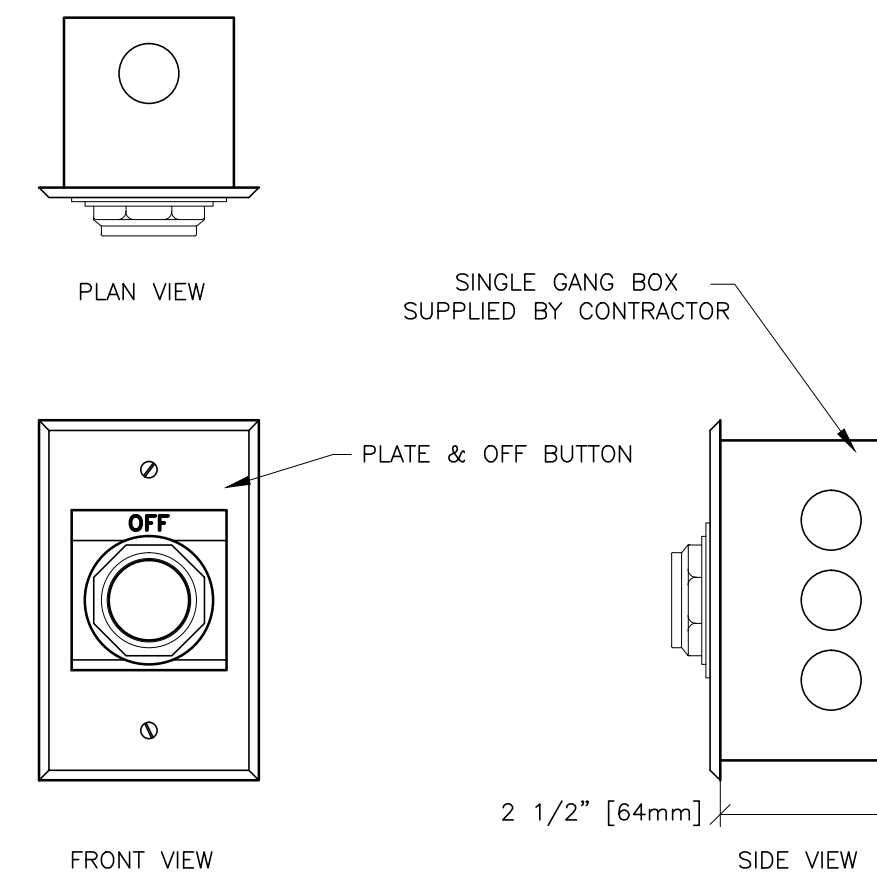
ELEC-72
REV. DATE: 05/14/09



UNLESS SPECIFIED ON SHEET A1 AS BEING INCLUDED ON EQUIPMENT ORDER, ALL ITEMS ILLUSTRATED ARE TO BE FURNISHED AND INSTALLED BY CUSTOMER'S CONTRACTOR
DRAWING NOT TO SCALE

ELECTRICAL DETAIL
EMERGENCY OFF BUTTON

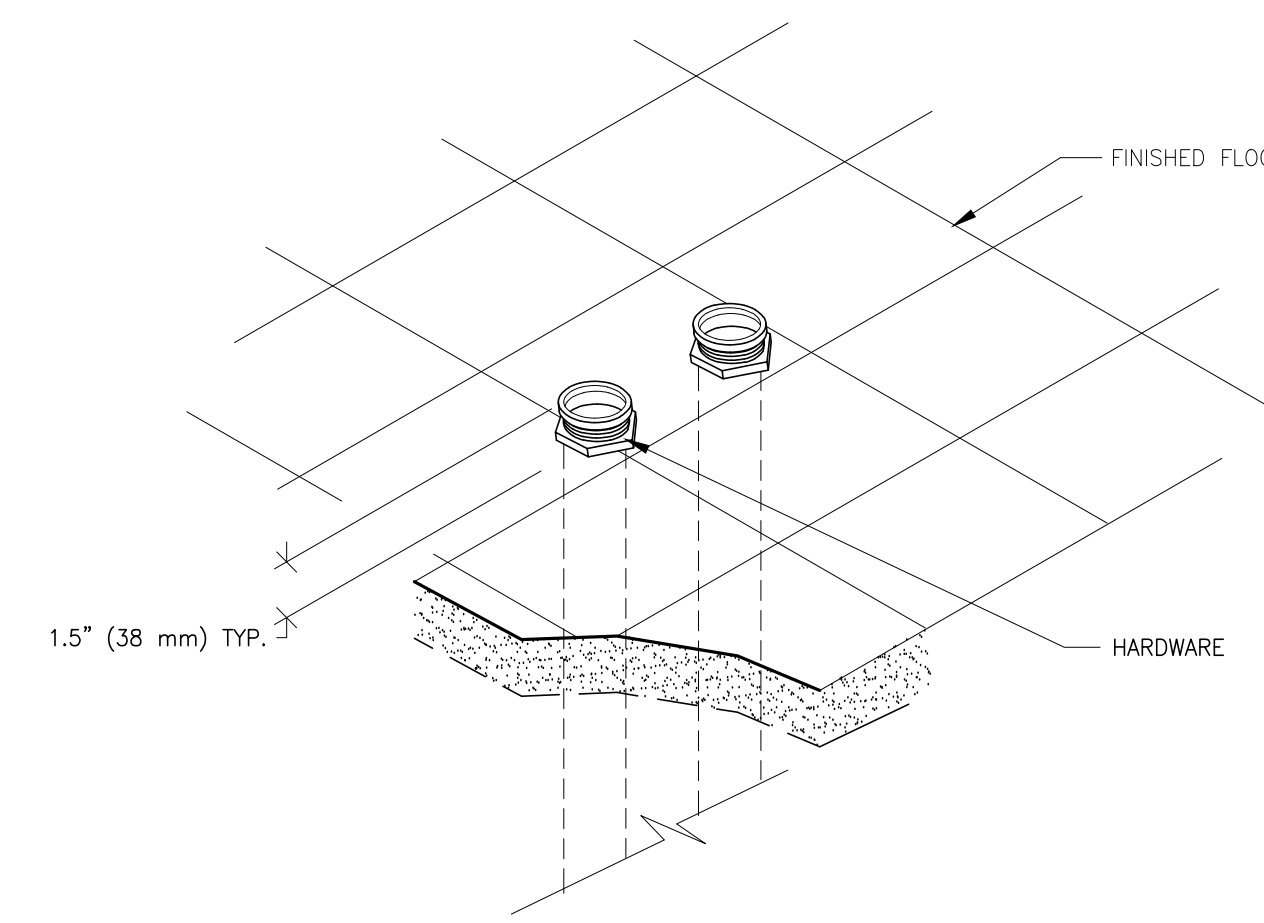
ELEC-16
REV. DATE: 05/14/09



DETAIL NOT TO SCALE

ELECTRICAL DETAIL
CONDUITS THRU-FLOOR (TYPICAL)

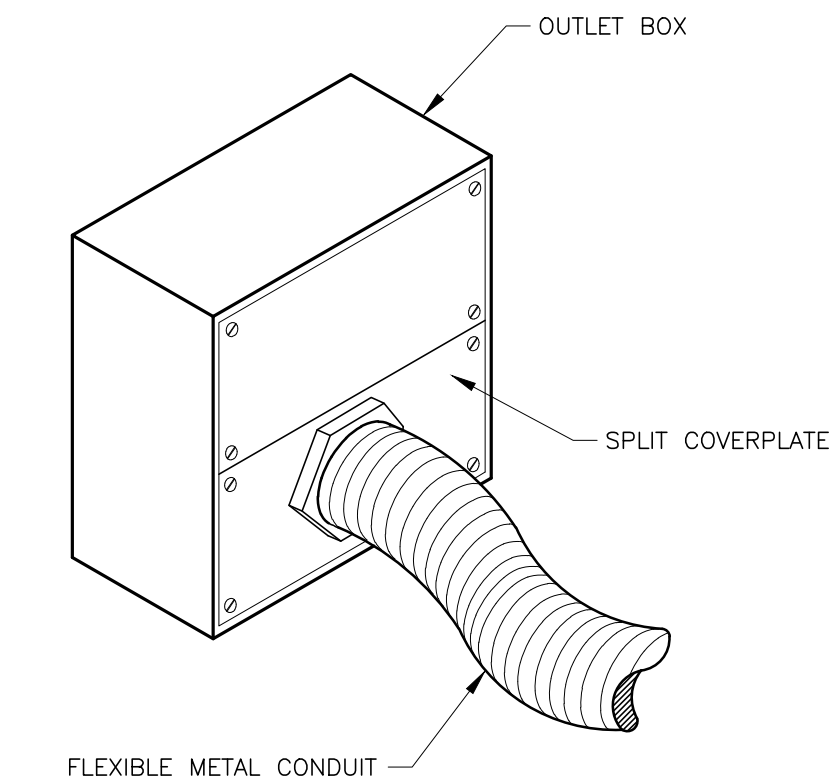
ELEC-9
REV. DATE: 08/08/94



DETAIL NOT TO SCALE

ELECTRICAL DETAIL
BOX WITH SPLIT COVERPLATE (TYPICAL)

ELEC-22
REV. DATE: 10/13/94

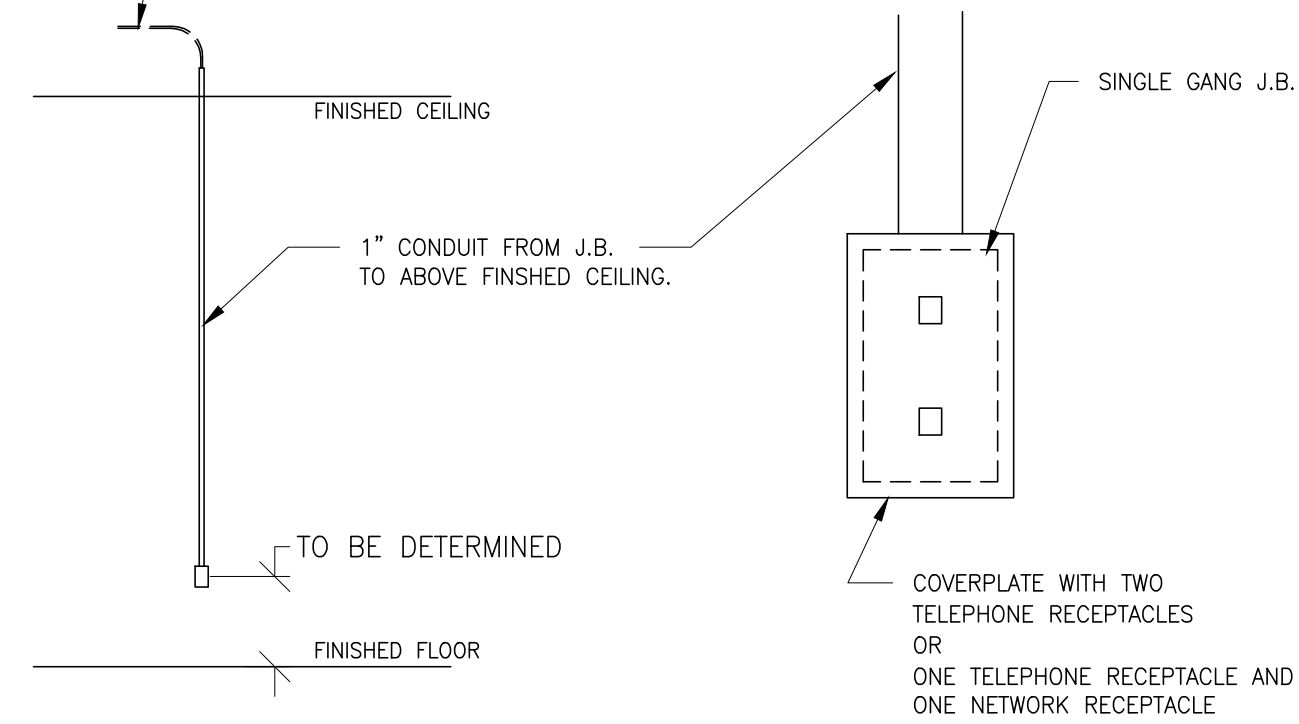


DETAIL NOT TO SCALE

ELECTRICAL DETAIL
INSITE CONNECTION (TYPICAL)

ELEC-1
REV. DATE: 04/24/02

- ONE OF THE FOLLOWING TWO SELECTIONS MUST BE INSTALLED AT THE LOCATION SHOWN ON THE ELECTRICAL PLAN (SHEET E1) FOR GE INSITE CONNECTION BASED UPON SYSTEM CONFIGURATION.
- A) ONE INTERNET ACCESSIBLE VIRTUAL PRIVATE NETWORK (VPN) CONNECTION WITH A STATIC IP ADDRESS, AND ONE TELEPHONE LINE - DEDICATED-DIRECT-DIALING, VOICE GRADE.
 - OR
 - B) TWO TELEPHONE LINES - ONE DEDICATED DIRECT-DISTANCE-DIALING, VOICE GRADE AND ONE A DEDICATED DATA LINE.

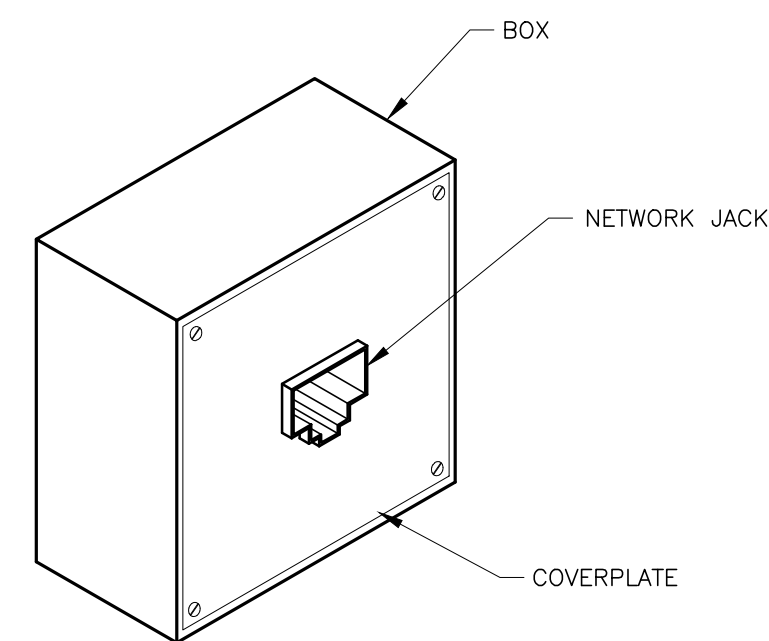


ALL ITEMS ILLUSTRATED ARE TO BE FURNISHED AND INSTALLED BY CUSTOMER OR THEIR CONTRACTOR.

DETAIL NOT TO SCALE

ELECTRICAL DETAIL
BOX WITH COVERPLATE AND NETWORK JACK

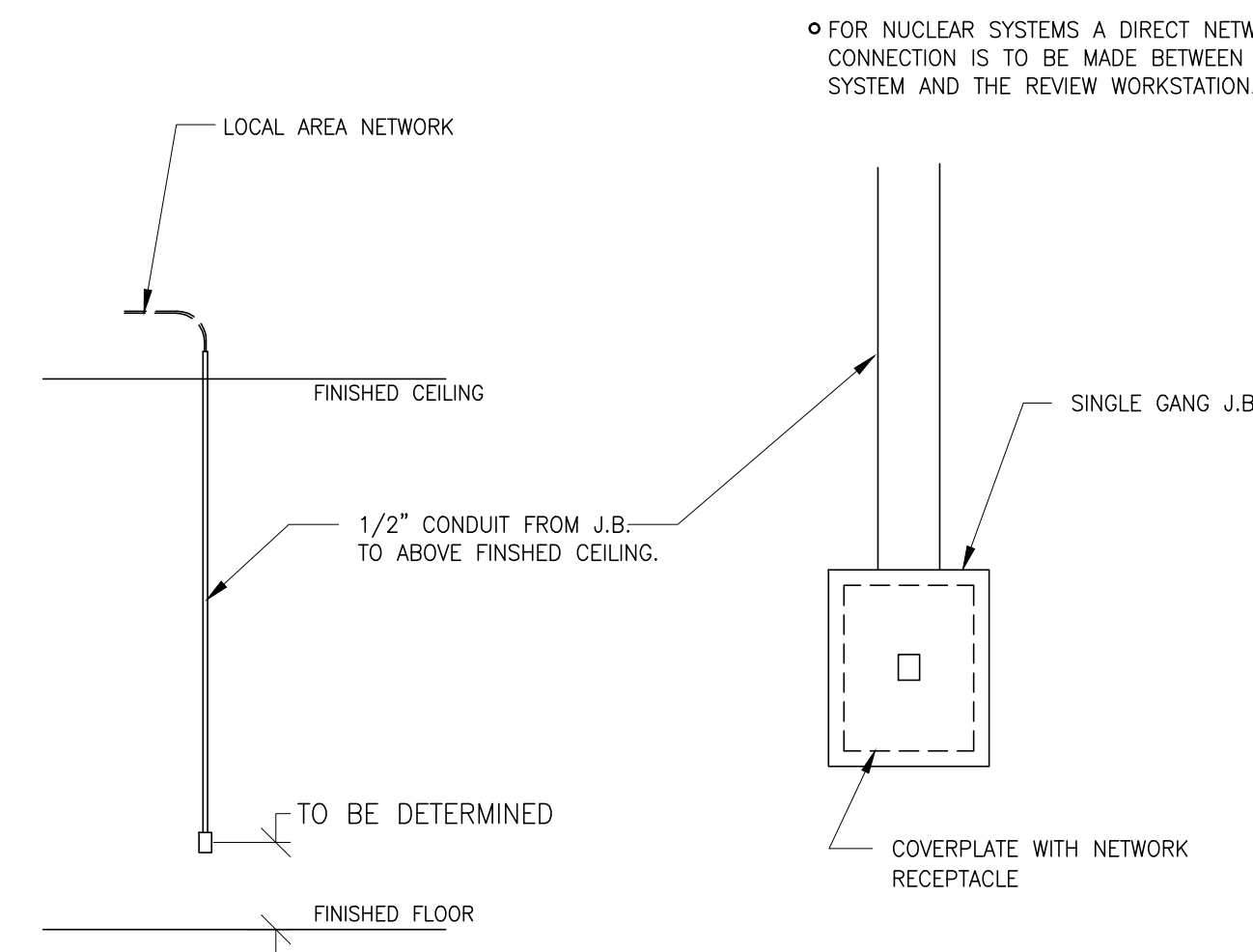
ELEC-83
REV. DATE: 10/06/98



DETAIL NOT TO SCALE

ELECTRICAL DETAIL
NETWORK CONNECTION (TYPICAL)

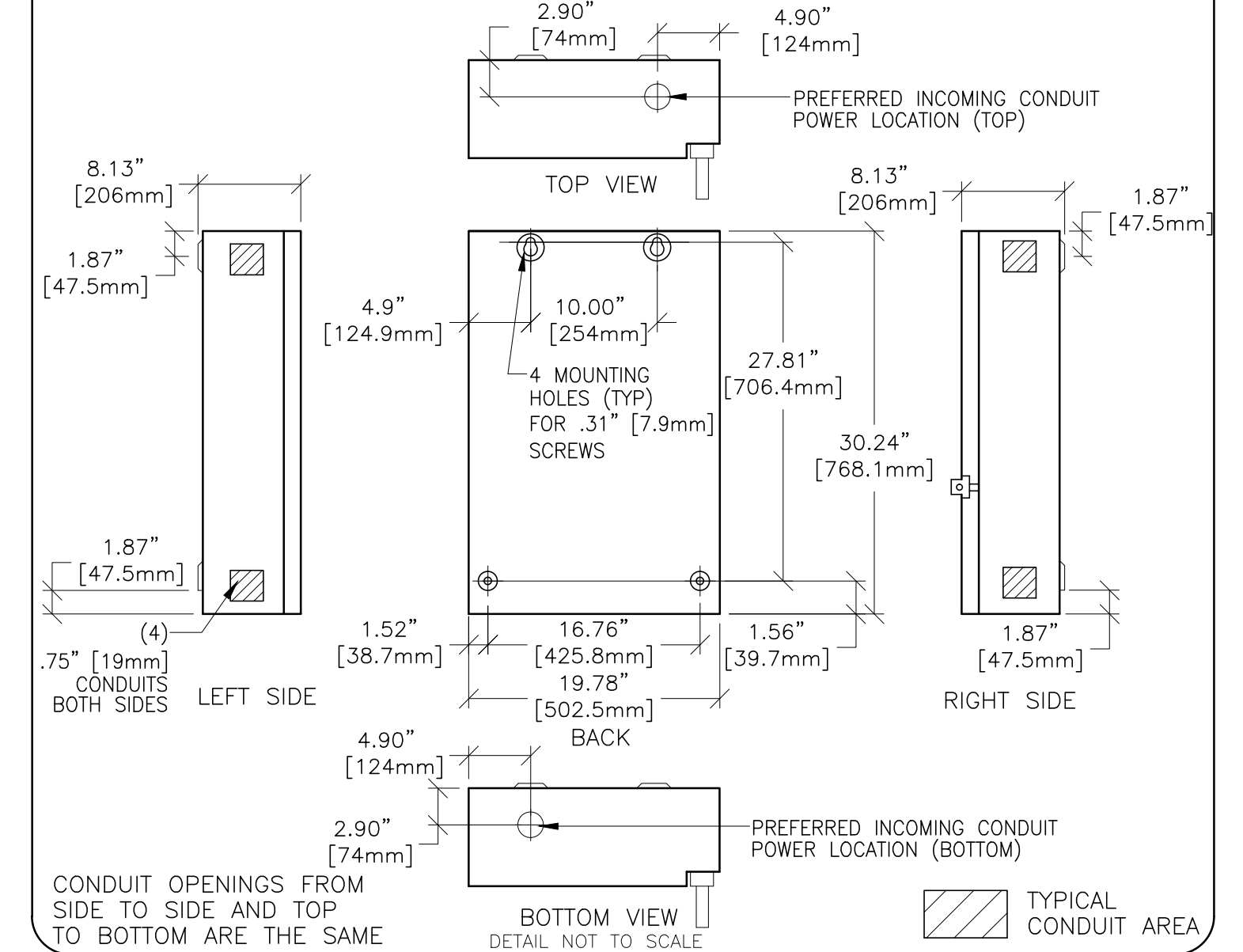
ELEC-84
REV. DATE: 03/06/04



DETAIL NOT TO SCALE

ELECTRICAL DETAIL
MAIN DISCONNECT PANEL

ELEC-135
REV. DATE: 09/27/04



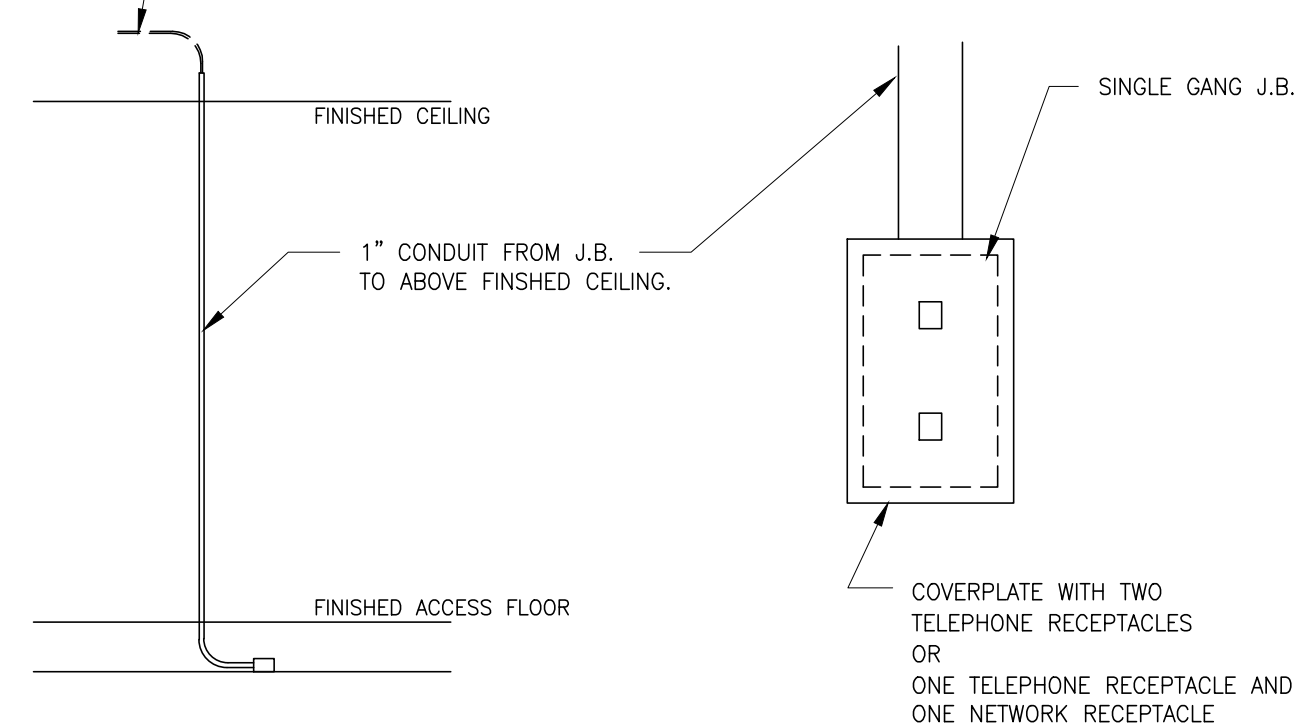
CONDUIT OPENINGS FROM SIDE TO SIDE AND TOP TO BOTTOM ARE THE SAME

TYPICAL CONDUIT AREA

ELECTRICAL DETAIL
INSITE CONNECTION (TYPICAL)

ELEC-67
REV. DATE: 04/24/02

- ONE OF THE FOLLOWING TWO SELECTIONS MUST BE INSTALLED AT THE LOCATION SHOWN ON THE ELECTRICAL PLAN (SHEET E1) FOR GE INSITE CONNECTION BASED UPON SYSTEM CONFIGURATION.
- A) ONE INTERNET ACCESSIBLE VIRTUAL PRIVATE NETWORK (VPN) CONNECTION WITH A STATIC IP ADDRESS, AND ONE TELEPHONE LINE - DEDICATED-DIRECT-DIALING, VOICE GRADE.
 - OR
 - B) TWO TELEPHONE LINES - ONE DEDICATED DIRECT-DISTANCE-DIALING, VOICE GRADE AND ONE A DEDICATED DATA LINE.



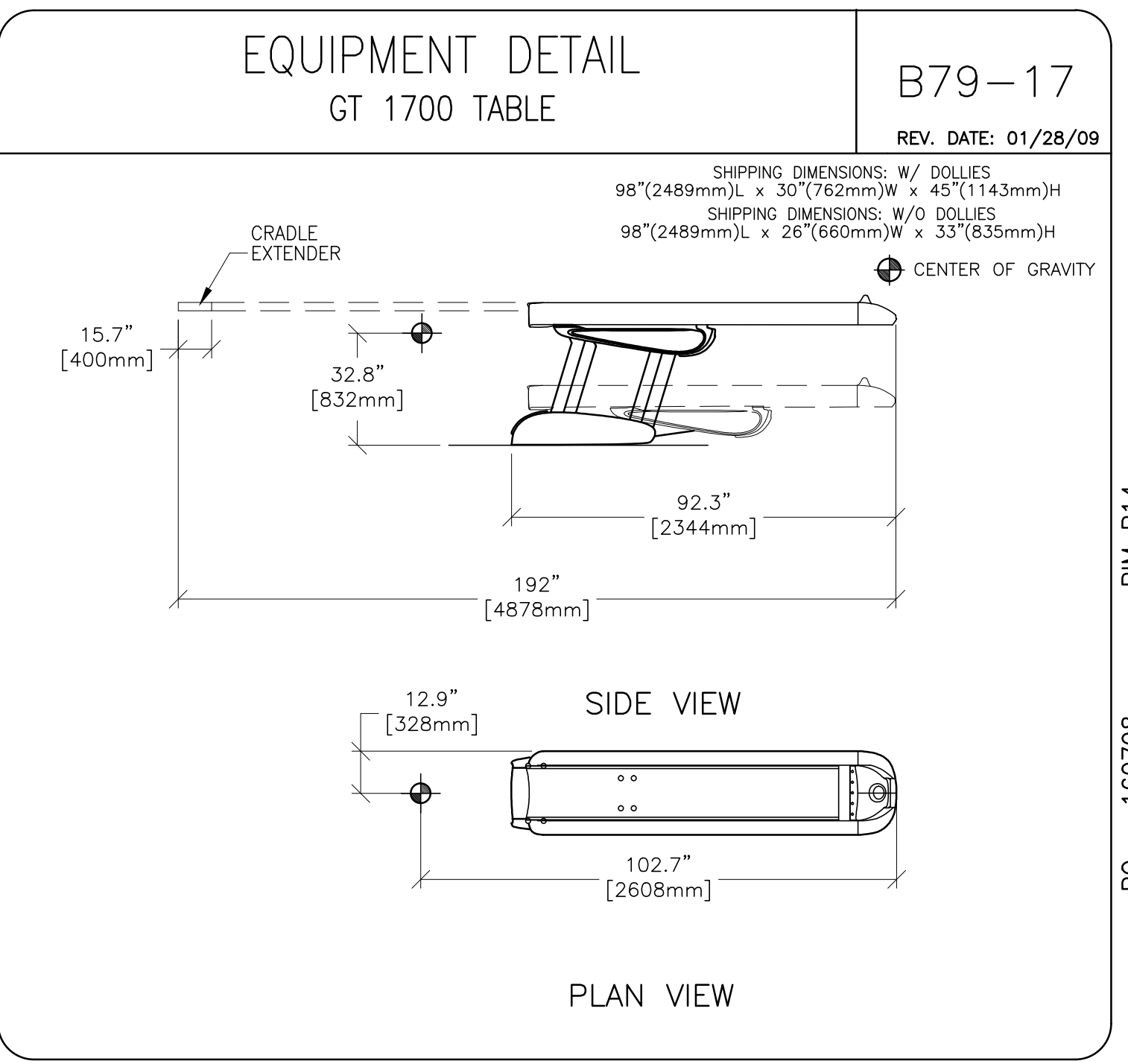
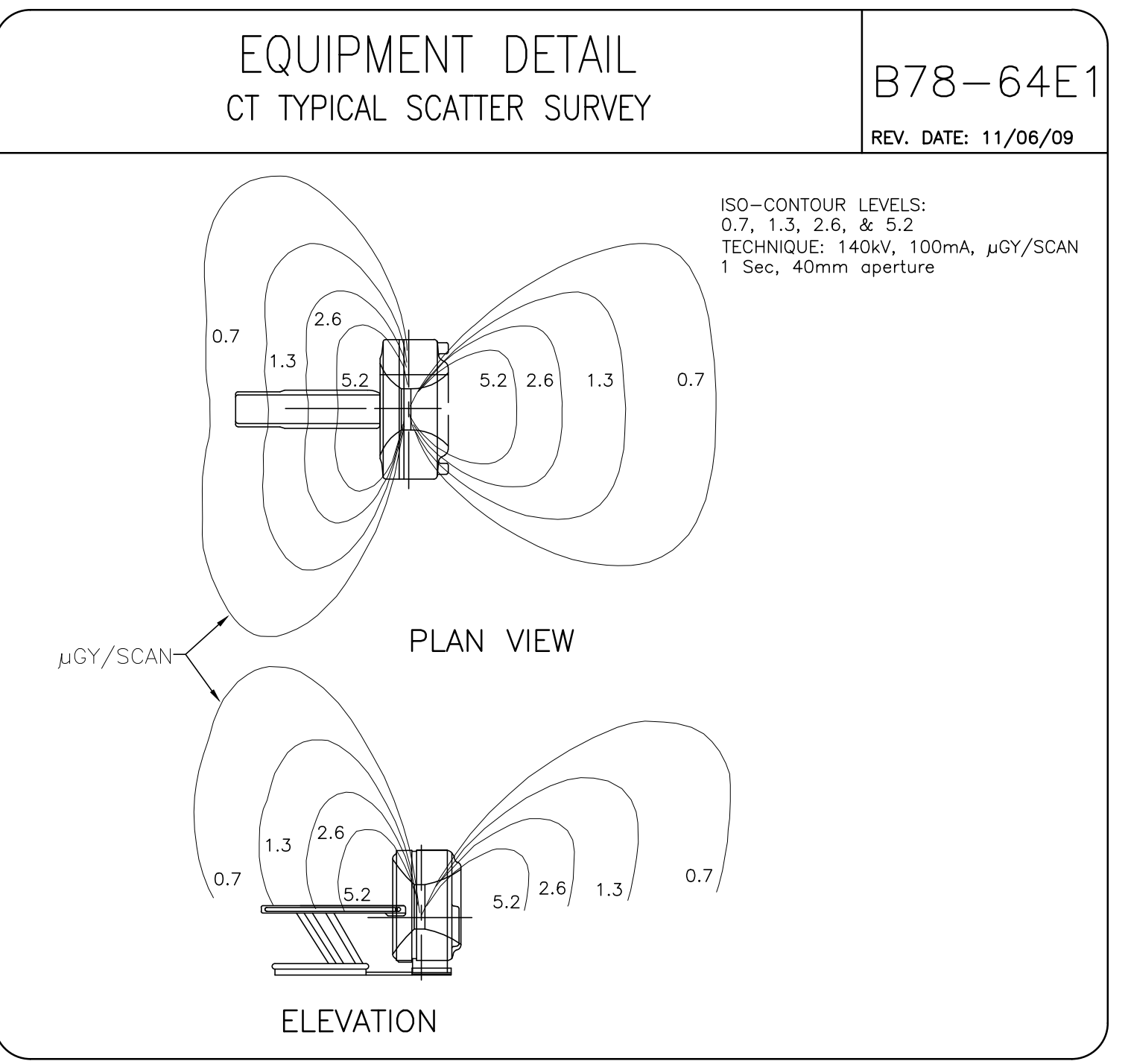
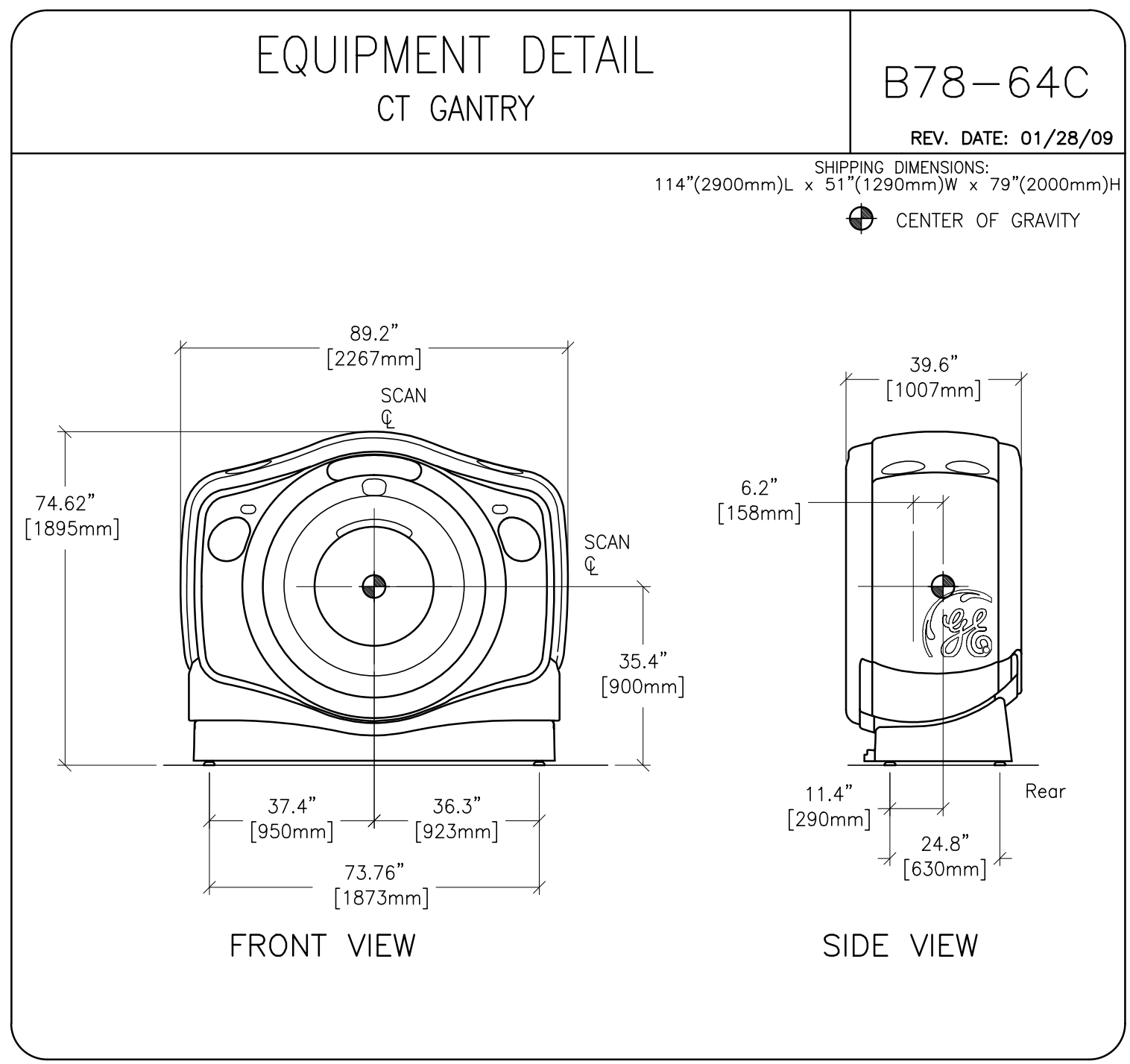
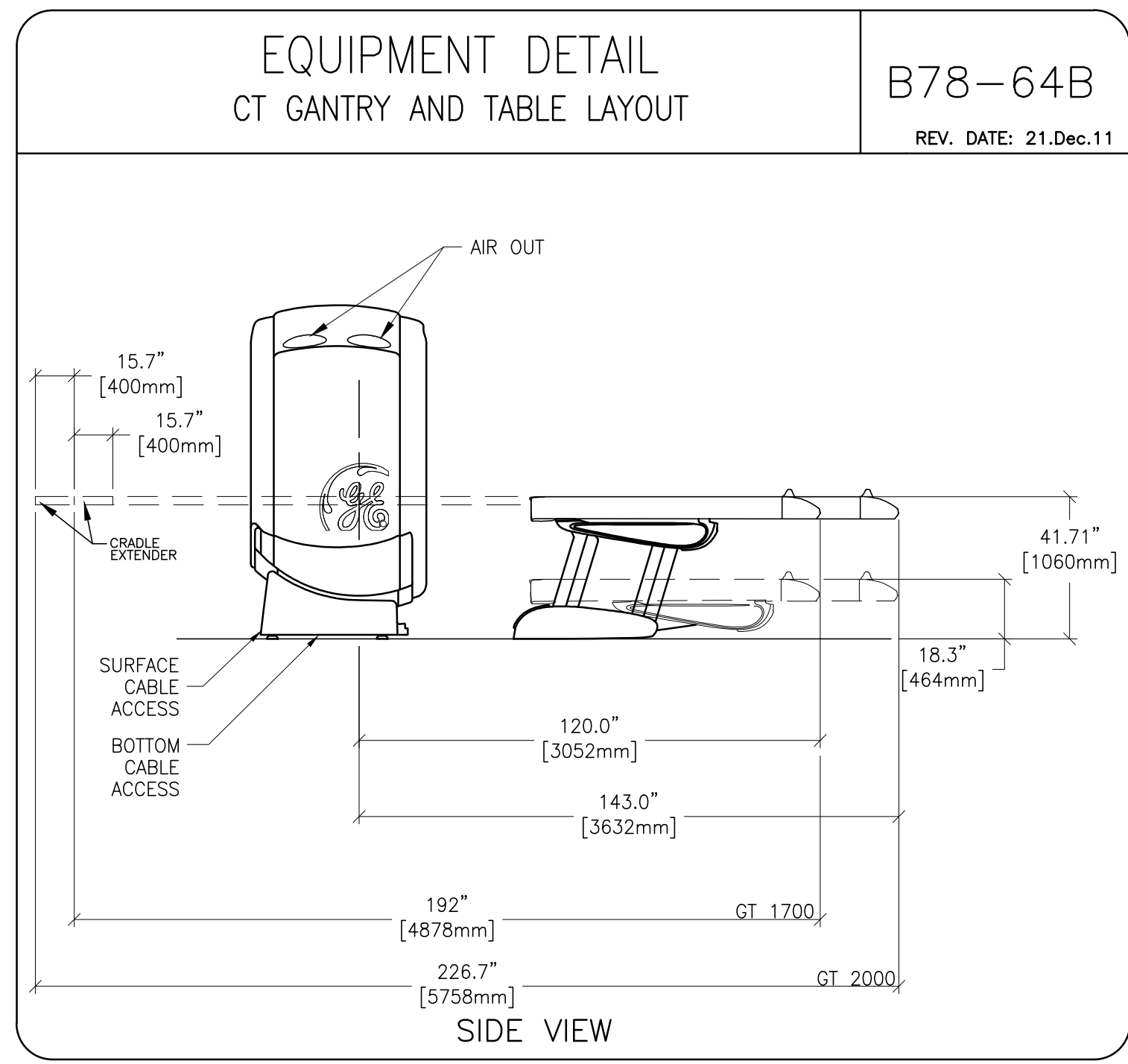
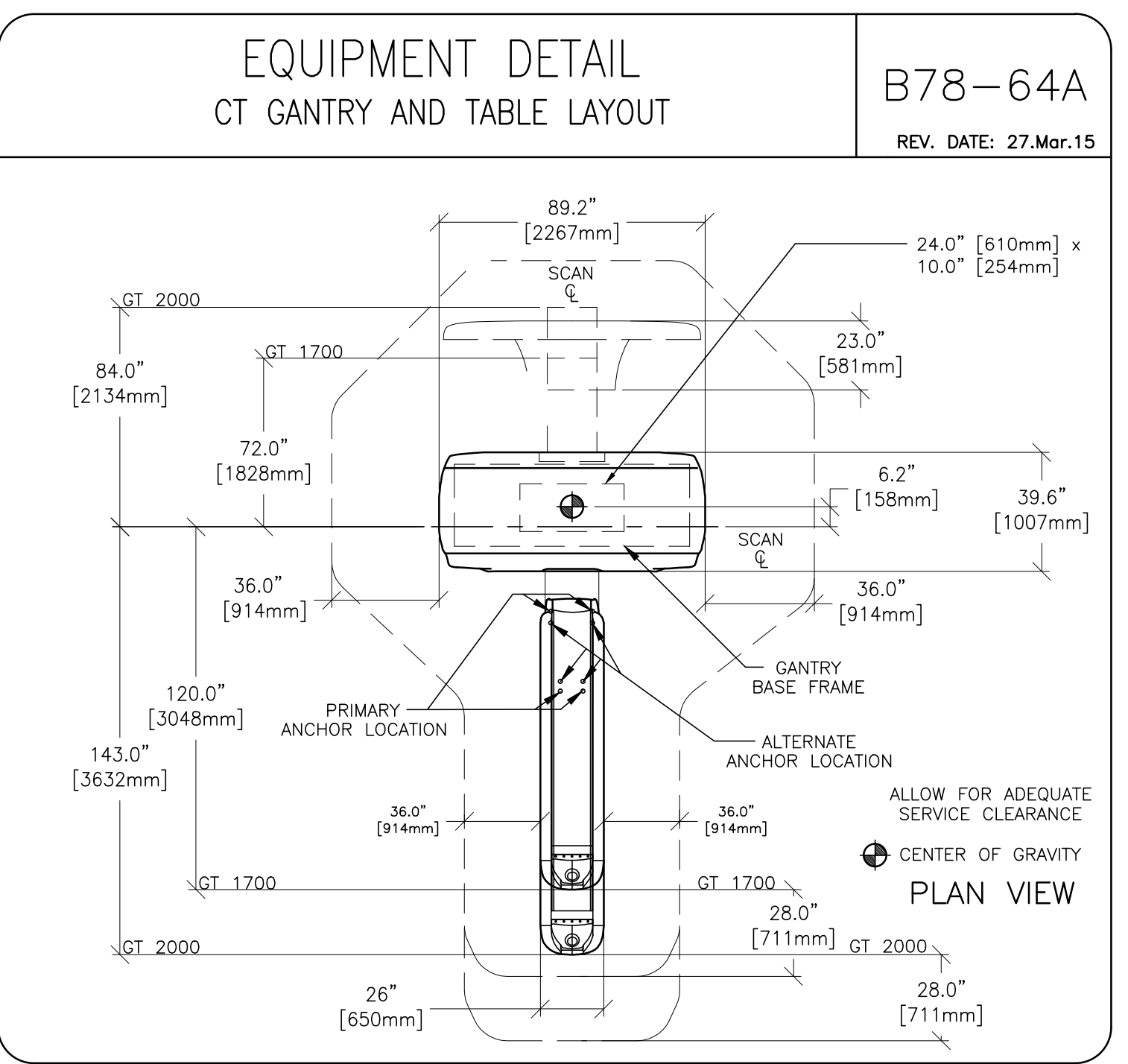
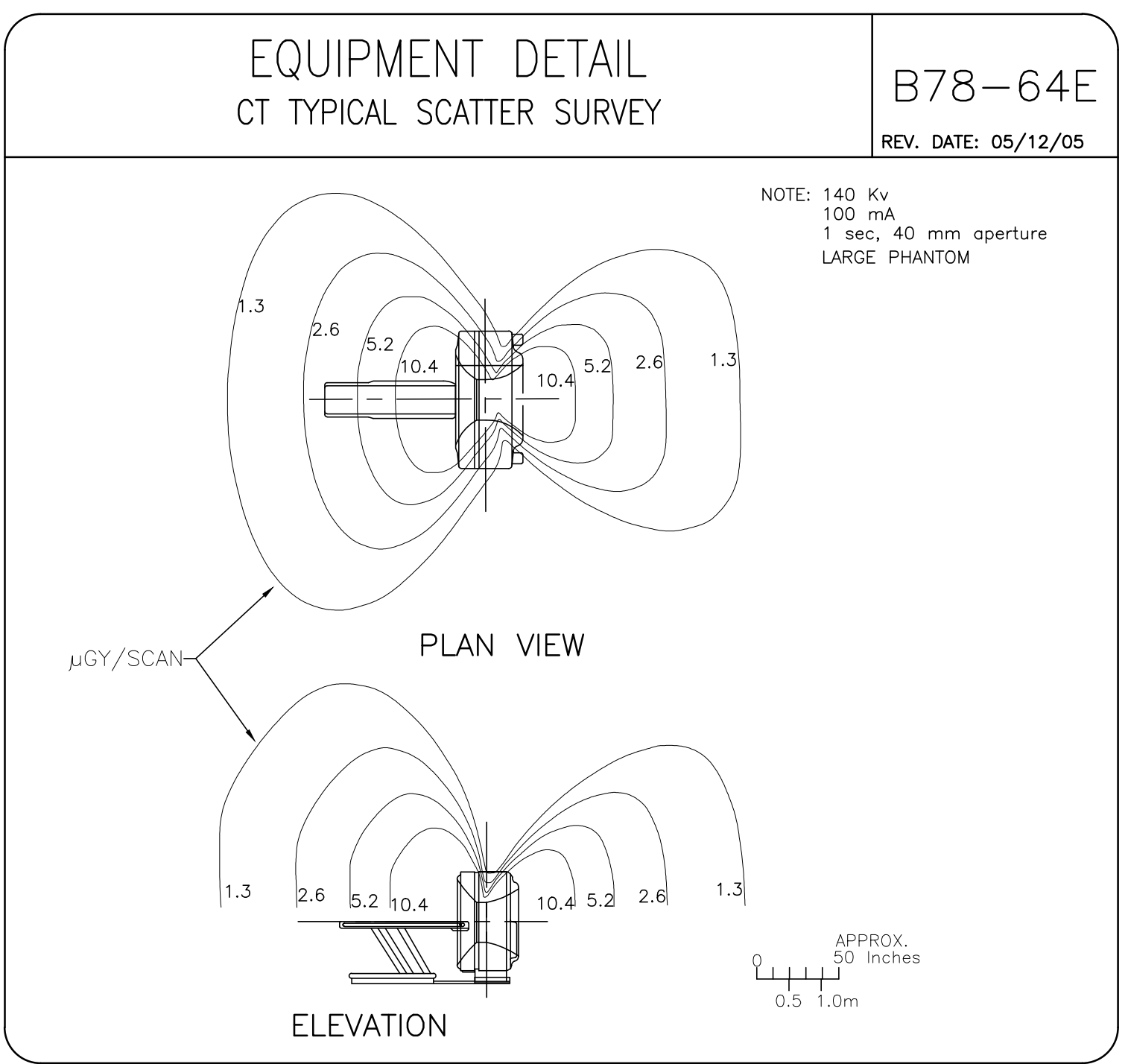
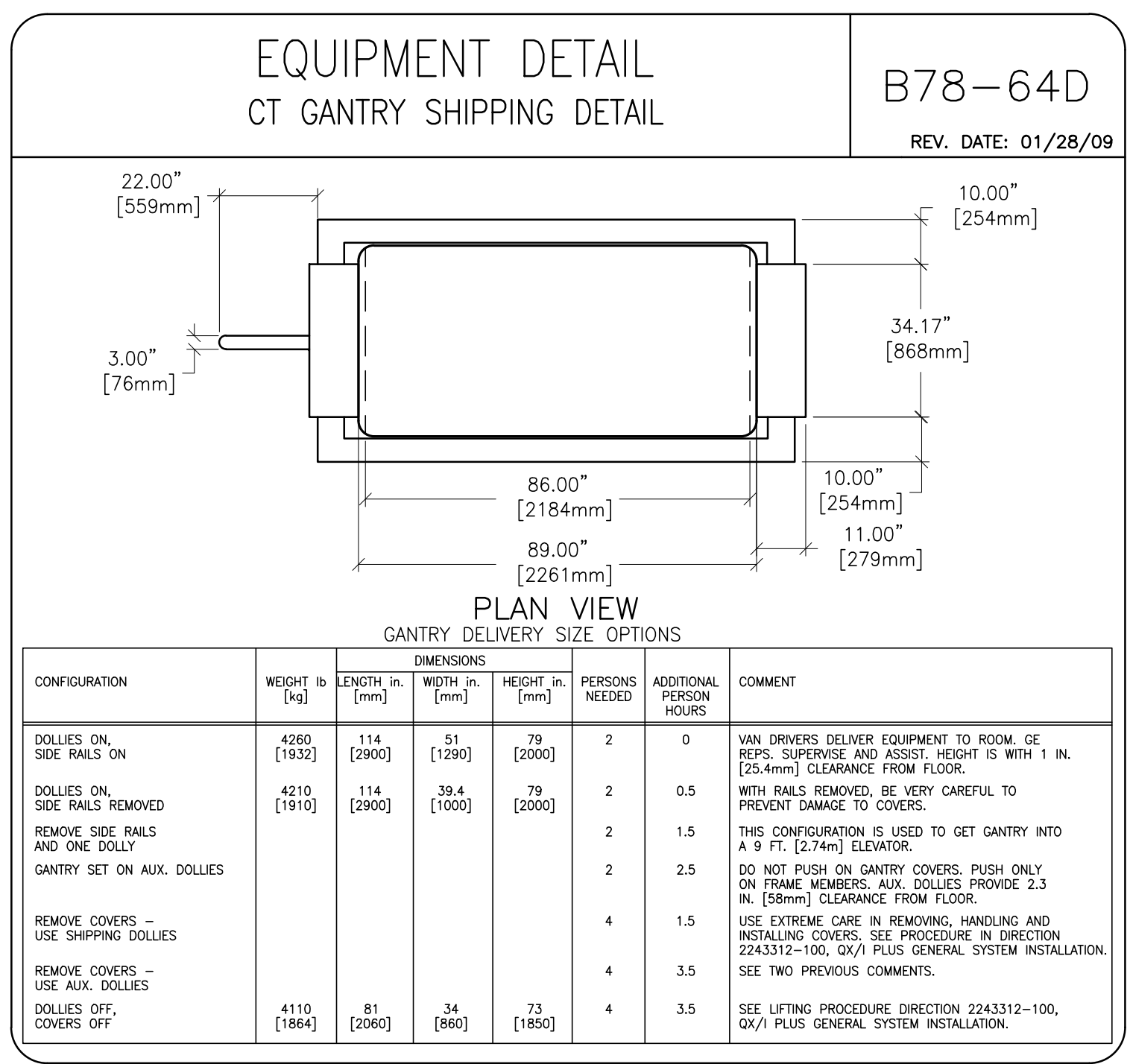
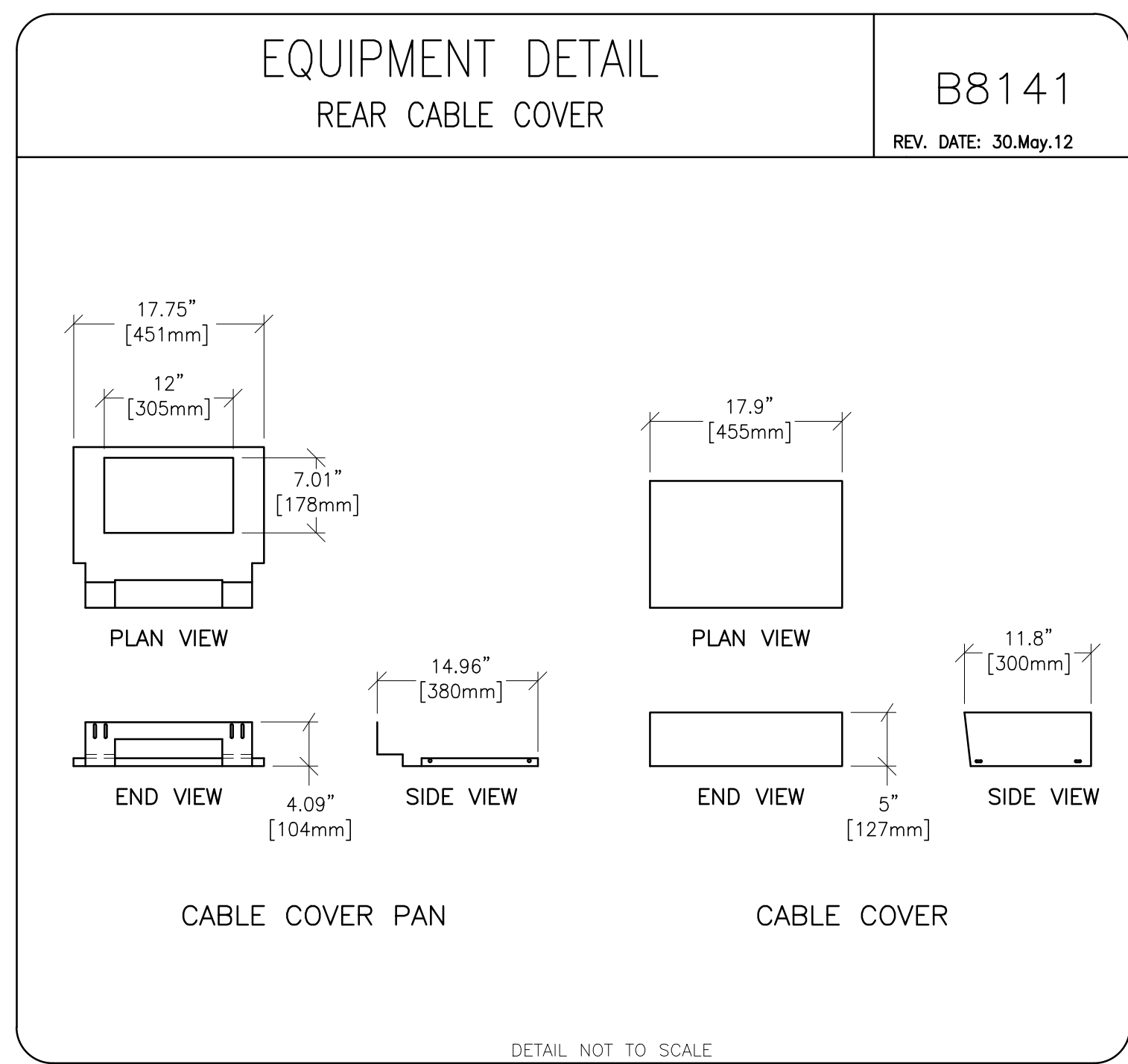
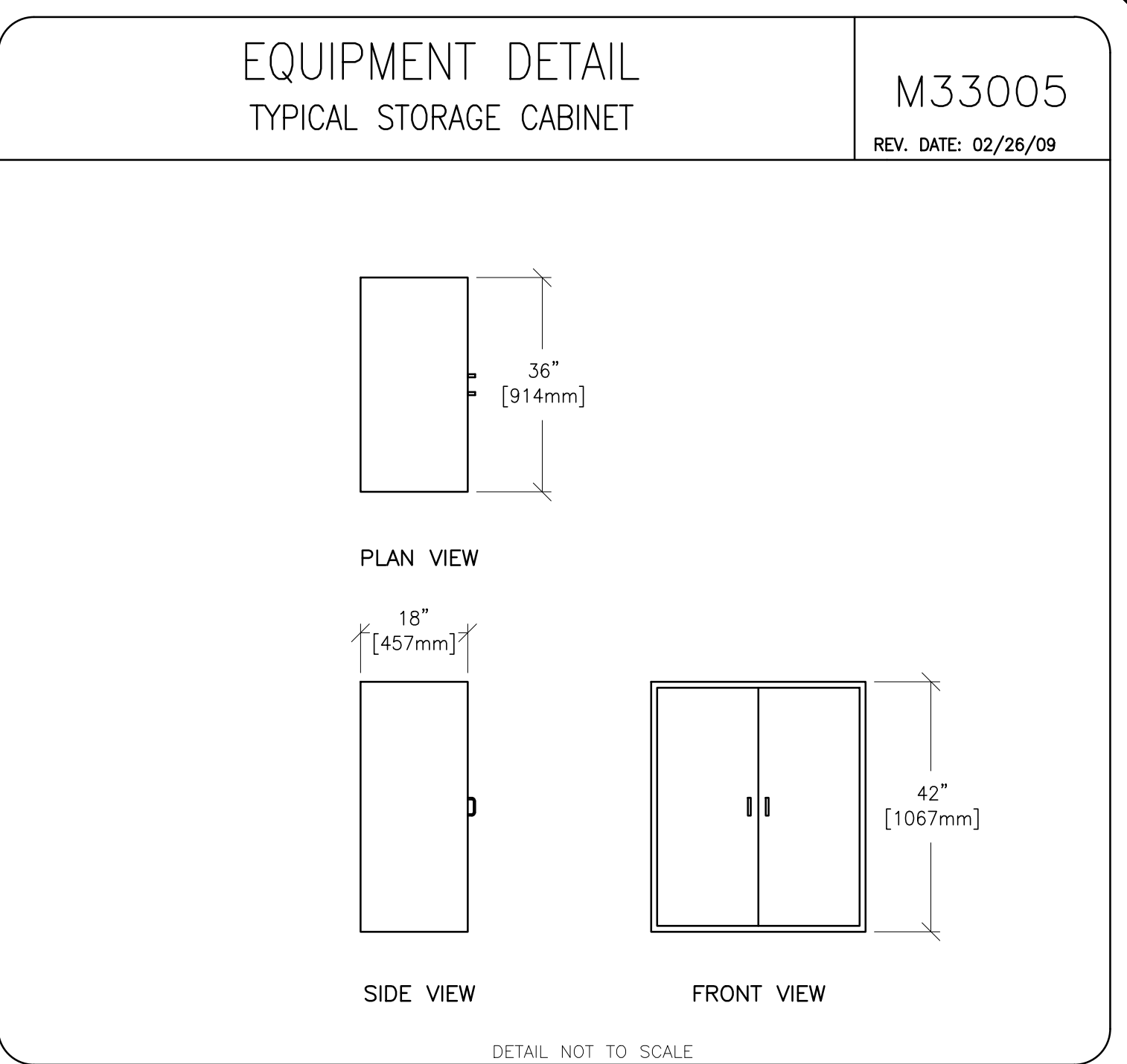
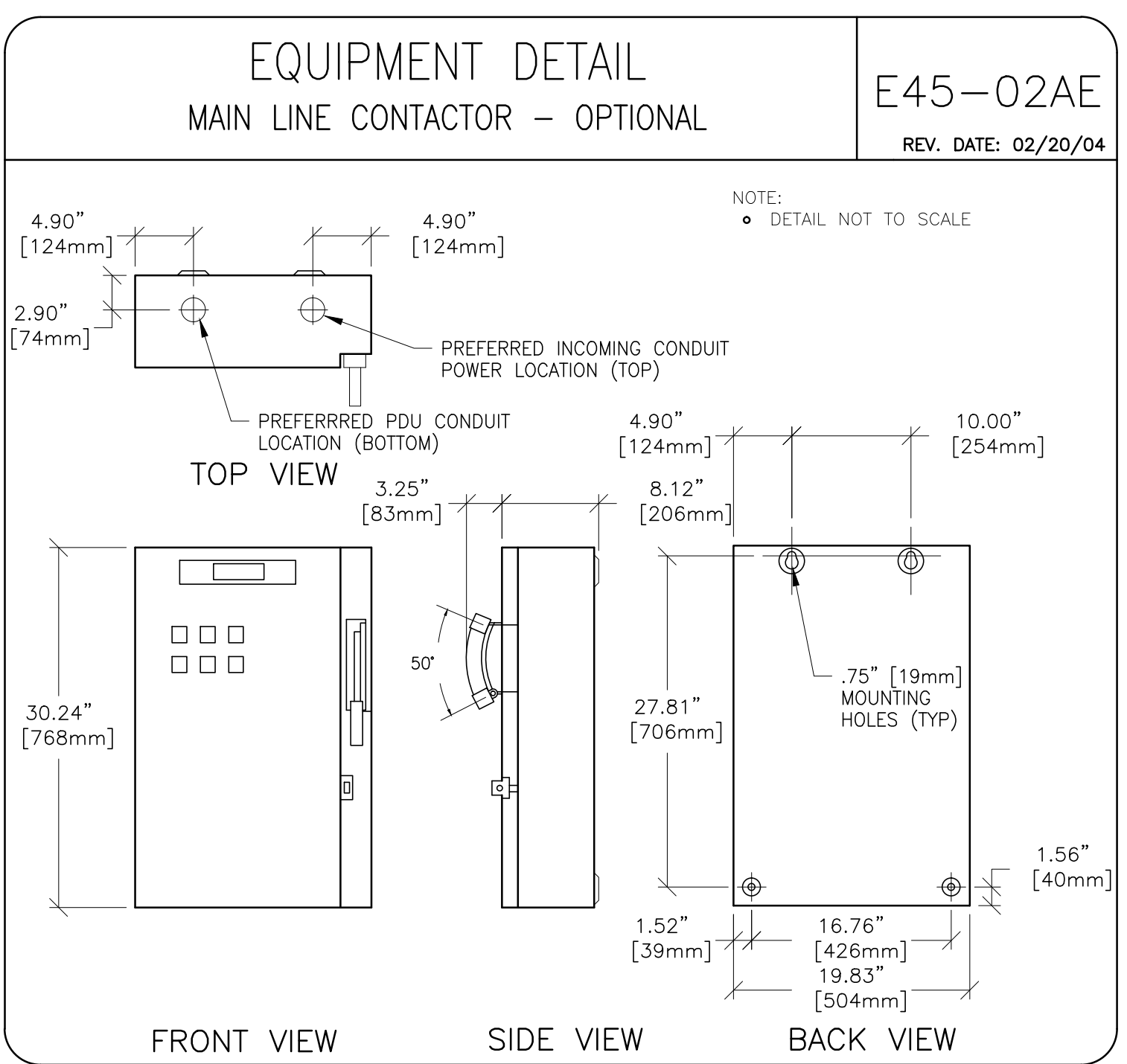
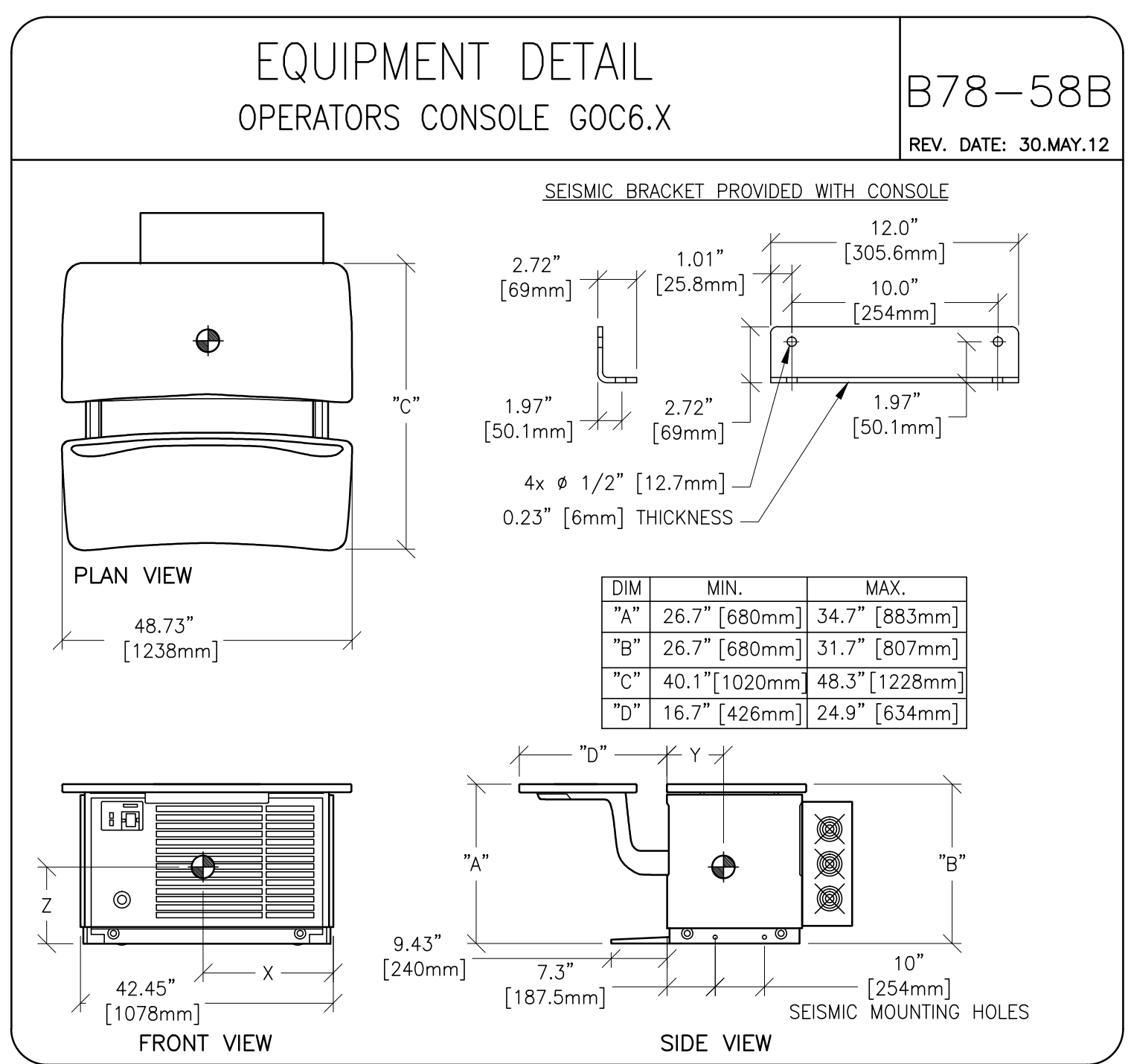
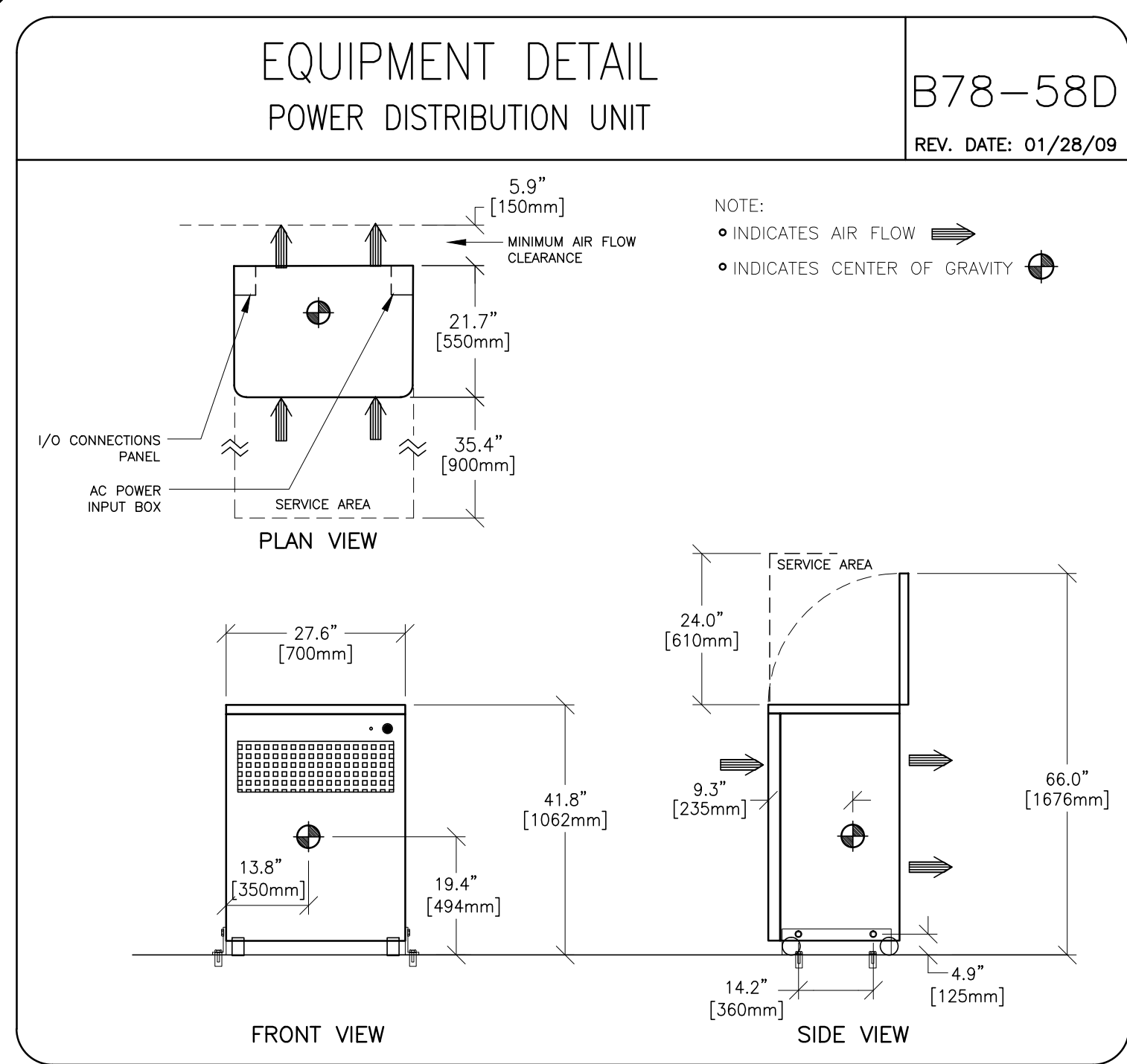
ALL ITEMS ILLUSTRATED ARE TO BE FURNISHED AND INSTALLED BY CUSTOMER OR THEIR CONTRACTOR.

DETAIL NOT TO SCALE

PROJECT	REVISION
6-68f	07
DATE:	19.May.16
DRAWN BY:	DMH
CHECKED BY:	DJP

REVISION HISTORY:

PIM R14
RQ - 160798



GE Healthcare
Healthcare Project Implementation - Design Center
Manufacture

SHEET TITLE: EQUIPMENT DETAILS
MODALITY TYPE: DISCOVERY CT750 HD

THIS PLAN IS SUBMITTED TO SUGGEST LOCATION OF GE HEALTHCARE EQUIPMENT AND ASSOCIATED ELECTRICAL WIRING DETAILS AND ROOM ARRANGEMENTS. IN PREPARING THIS PLAN, EVERY EFFORT HAS BEEN MADE TO CONFORM TO ALL APPLICABLE CODES AND REGULATIONS. GE HEALTHCARE SHALL NOT BE RESPONSIBLE FOR ANY DAMAGES RESULTING THEREFROM.

PROJECT TITLE:
6-68f
TYPICAL LAYOUT
(W/ GT1700 TABLE)

PROJECT	REVISION
6-68f	07

DATE: 19.MAY.16
DRAWN BY: DMH
CHECKED BY: DJP

REVISION HISTORY:

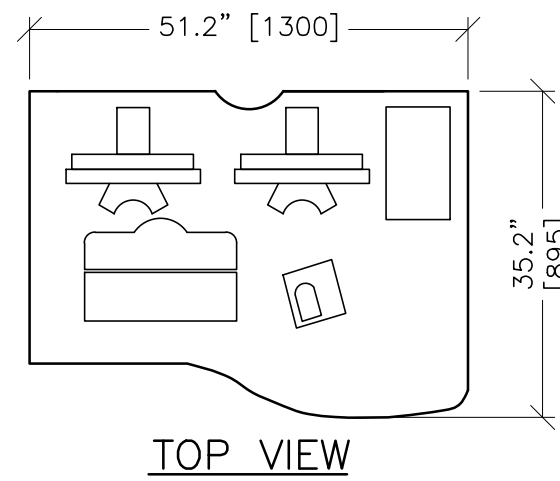
SHEET
D1

PIM R14
RQ - 160798

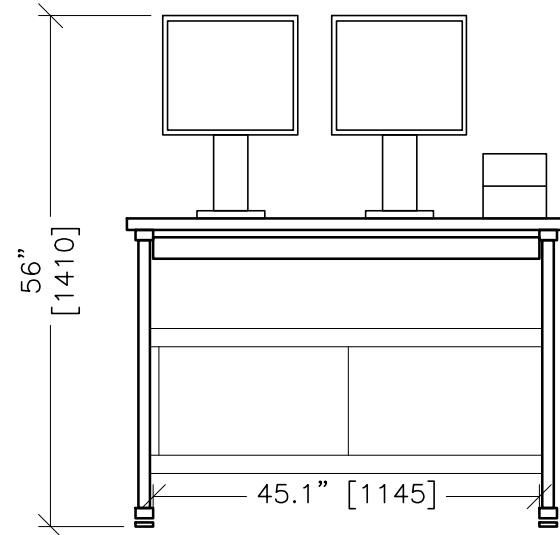
EQUIPMENT DETAIL
OPERATORS CONSOLE – OPTIMA TABLE

B81-40
REV. DATE: 12.JUN.13

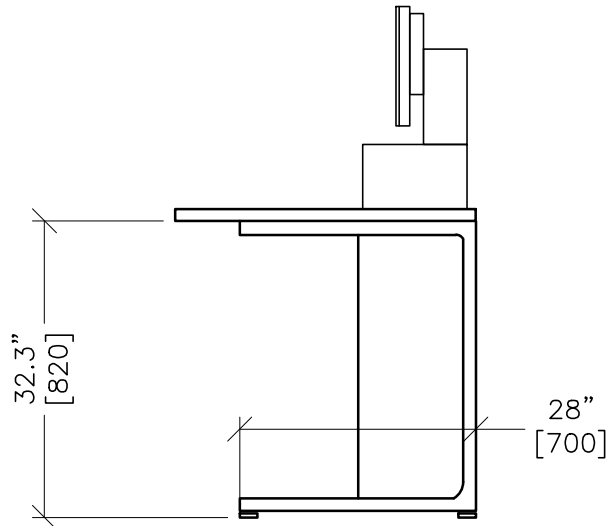
• NOTE: DETAIL NOT TO SCALE
• UNITS IN INCHES BRACKETED
• DIMENSIONS EQUAL [MM]



TOP VIEW



FRONT VIEW

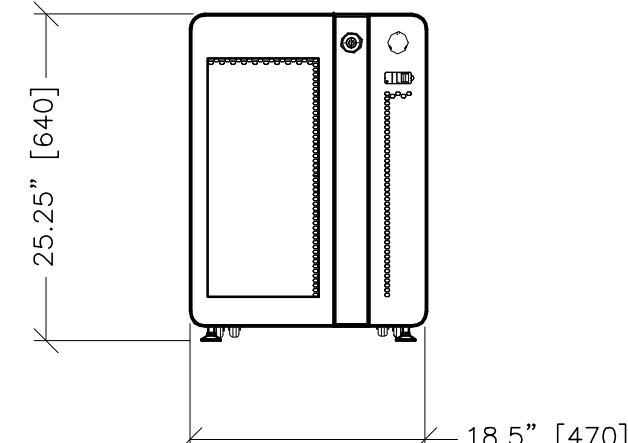


SIDE VIEW

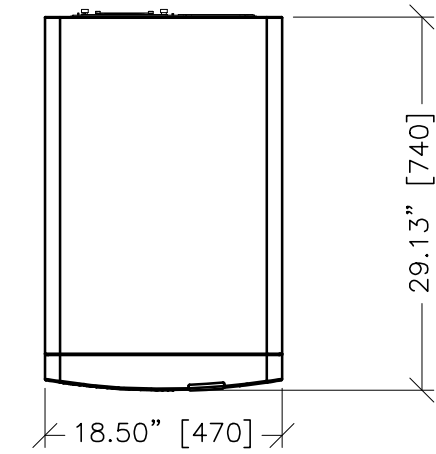
EQUIPMENT DETAIL
OPERATORS CONSOLE – COMPUTER

B81-05
REV. DATE: 20.NOV.12

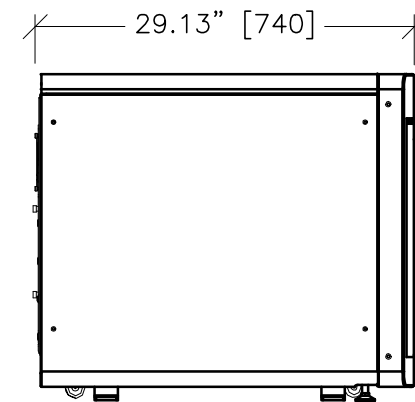
• NOTE: DETAIL NOT TO SCALE
• UNITS IN INCHES BRACKETED
• DIMENSIONS EQUAL [MM]



FRONT VIEW



TOP VIEW



SIDE VIEW



GE Healthcare
Healthcare Project Implementation – Design Center
Milwaukee, Wisconsin

SHEET TITLE: EQUIPMENT DETAILS
MODALITY TYPE: DISCOVERY CT750 HD

THIS PLAN IS SUBMITTED TO SUGGEST LOCATION OF GE HEALTHCARE EQUIPMENT AND ASSOCIATED APPARATUS, ELECTRICAL WIRING DETAILS AND ROOM ARRANGEMENTS. IN PREPARING THIS PLAN, EVERY EFFORT HAS BEEN MADE TO CONFORM TO ALL APPLICABLE REGULATIONS AND STANDARDS. THE USER OF THIS PLAN SHALL BE RESPONSIBLE FOR OBTAINING ALL NECESSARY PERMITS AND FOR ACTING IN ACCORDANCE WITH ALL APPLICABLE REGULATIONS AND STANDARDS. THE COMPANY CANNOT ACCEPT RESPONSIBILITY FOR ANY DAMAGES RESULTING THEREFROM.

PROJECT TITLE:
6-68f
TYPICAL LAYOUT
(W/ GT1700 TABLE)

PROJECT	REVISION
6-68f	07
DATE:	19.May.16
DRAWN BY:	DMH
CHECKED BY:	DJP

REVISION HISTORY:

SHEET

D2

RQ - 160798 PIM R14