



**GE Healthcare
Project Management**

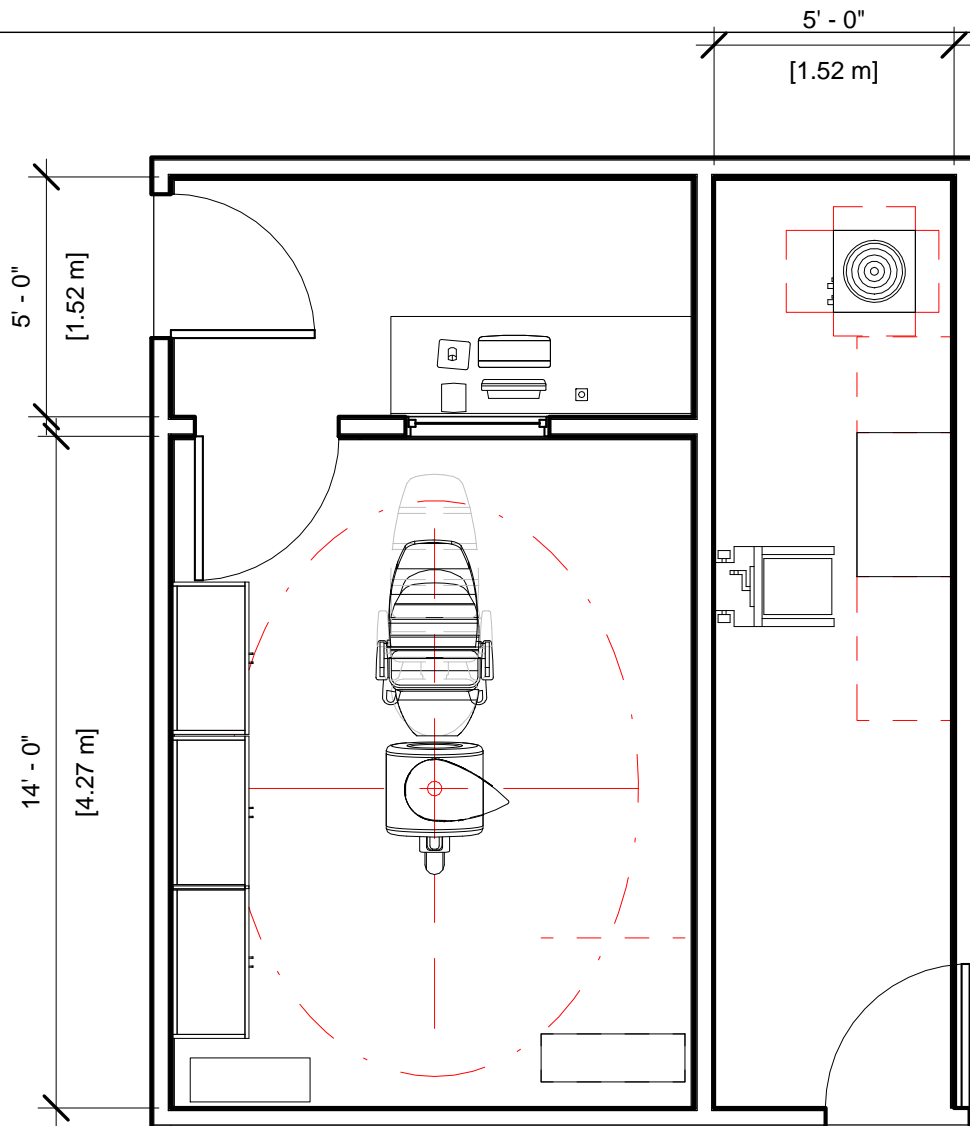
GE Healthcare has made reasonable efforts to ensure this BIM file conforms to requirements of the applicable pre-installation manual. This BIM file was produced to assist with site planning and is not intended for construction or final building modeling. GE Healthcare is not responsible for any damages resulting from use of such file for construction or final building modeling purposes. Compliance with all applicable local, state, and federal laws and regulations is the responsibility of the customer or its designated architects and engineers. Please keep in mind the information in this BIM file is dynamic and is subject to change without notice. It is the responsibility of the customer or its designated architect(s) and engineer(s) to ensure they have the latest equipment or product information.

OPTIMA MR430s - RENDERING

Project number	8-234
Date	05.APRIL.17
Drawn by	GENPACT
Checked by	

A-1

Scale 12" = 1'-0"



Specialty Equipment Schedule		
Description	Weight (lbs)	BTU
CONTROL ROOM		
OPERATORS CONSOLE	26	136
EMERGENCY QUENCH BUTTON	0	0
EQUIPMENT ROOM		
LIFTING FIXTURE	0	0
SYSTEM ELECTRONICS	842	15003
HELIUM COMPRESSOR	308	16003
EXAM ROOM		
MAGNET ASSEMBLY	1000	331
STORAGE CABINET	0	0
PENETRATION PANEL	26	0
PENETRATION COVER	11	0
PATIENT SUPPORT	169	0
ROOM SUPPLY CABINET	0	0
ROOM SUPPLY CABINET	0	0
ROOM SUPPLY CABINET	0	0



**GE Healthcare
Project Management**

GE Healthcare has made reasonable efforts to ensure this BIM file conforms to requirements of the applicable pre-installation manual. This BIM file was produced to assist with site planning and is not intended for construction or final building modeling. GE Healthcare is not responsible for any damages resulting from use of such file for construction or final building modeling purposes. Compliance with all applicable local, state, and federal laws and regulations is the responsibility of the customer or its designated architects and engineers. Please keep in mind the information in this BIM file is dynamic and is subject to change without notice. It is the responsibility of the customer or its designated architect(s) and engineer(s) to ensure they have the latest equipment or product information.

OPTIMA MR430s - PLAN & SCHEDULE

Project number	8-234
Date	05.APRIL.17
Drawn by	GENPACT
Checked by	

A-2

Scale 1/4" = 1'-0"

Hold the Left Click for Rotating around
Use the Scroll for Zooming in and out



8-234 - ONI Optima 1.5T MR430s Extremity



GE Healthcare

[Click for Site Planning Support](#)