



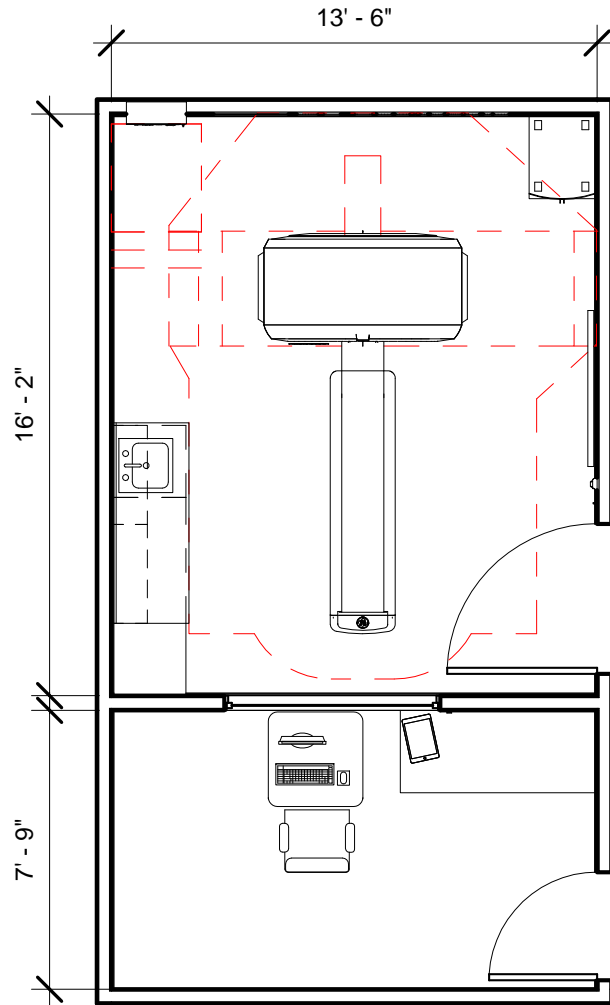
**GE Healthcare
Project Management**

GE Healthcare has made reasonable efforts to ensure this BIM file conforms to requirements of the applicable pre-installation manual. This BIM file was produced to assist with site planning and is not intended for construction or final building modeling. GE Healthcare is not responsible for any damages resulting from use of such file for construction or final building modeling purposes. Compliance with all applicable local, state, and federal laws and regulations is the responsibility of the customer or its designated architects and engineers. Please keep in mind the information in this BIM file is dynamic and is subject to change without notice. It is the responsibility of the customer or its designated architect(s) and engineer(s) to ensure they have the latest equipment or product information.

BRIVO CT 315/325 - RENDERING

Project number	6-86R
Date	02.FEB.17
Drawn by	Genpact
Checked by	-

A-1



Specialty Equipment Schedule		
Description	Weight lbs	BTU
MAIN DISCONNECT CONTROL	90	0
BRIVO 315/325 GANTRY & TABLE	3108	15524
NARROW OPERATORS CONSOLE	301	2866
UPS	619	5122



GE Healthcare
Project Management

GE Healthcare has made reasonable efforts to ensure this BIM file conforms to requirements of the applicable pre-installation manual. This BIM file was produced to assist with site planning and is not intended for construction or final building modeling. GE Healthcare is not responsible for any damages resulting from use of such file for construction or final building modeling purposes. Compliance with all applicable local, state, and federal laws and regulations is the responsibility of the customer or its designated architects and engineers. Please keep in mind the information in this BIM file is dynamic and is subject to change without notice. It is the responsibility of the customer or its designated architect(s) and engineer(s) to ensure they have the latest equipment or product information.

BRIVO CT 315/325 - PLAN

Project number	6-86R
Date	02.FEB.17
Drawn by	Genpact
Checked by	-

A-2

Scale 3/16" = 1'-0"

Hold the Left Click for Rotating around
Use the Scroll for Zooming in and out
Hold Left click + Ctrl Key to change perspective



Brivo CT 315/325



GE Healthcare

[Click for Site Planning Support](#)