

# Drawing Index

These sheets are a document set and should not be separated. Electrical information and references are contained on all sheets.

SITE READINESS	C1
EQUIPMENT LAYOUT (Equipment locations, heat loads, component weights, environmental specs)	A1
STRUCTURAL LAYOUT (Structural support/mounting locations for floor/wall/ceiling, wall support elevations)	S1
STRUCTURAL DETAILS (Floor and Ceiling loading information)	S2
ELECTRICAL LAYOUT (Contractor supplied wiring, interconnect methods, junction point locations and descriptions)	E1
ELECTRICAL SPECIFICATIONS (Maximum wiring run lengths, interconnect diagram, system power specifications)	E2
ELECTRICAL DETAILS	E3
EQUIPMENT DETAILS	D1

These equipment IS drawings indicate the placement and interconnection of the listed equipment components. These drawings are not construction or site preparation drawings. Customer remains ultimately responsible for preparing the site to accommodate the IS and operation of such equipment in compliance with GE Healthcare's written specifications and all applicable federal, state, and/or local requirements.

## \* REQUIRED REFERENCE \*

Discovery ST HP60  
Pre Installation Manual  
2341917-100

A mandatory component of this drawing set is the GE Healthcare Pre Installation manual. Failure to reference the preIS manual will result in incomplete documentation required for site design and preparation.

Pre Installation documents for GE Healthcare products can be accessed on the web at:

[www.gehealthcare.com/siteplanning](http://www.gehealthcare.com/siteplanning)

# GE Healthcare



## PET-CT Site Planning



imagination at work

# Customer Site Readiness Requirements

- Any deviation from these drawings must be communicated in writing to and reviewed by your local GE Healthcare Installation Project Manager prior to making changes.
- Make arrangements for any rigging, special handling, or facility modifications that must be made to deliver the equipment to the installation site. If desired, your local GE Healthcare Installation Project Manager can supply a reference list of rigging contractors.
- New construction requires the following; 1. Secure area for equipment, 2. Power for drills and other test equipment, 3. Capability for image analysis, 4. Restrooms.
- Provide for refuse removal and disposal (e.g. crates, cartons, packing)
- Contact a radiation physicist or consultant to specify radiation containment requirements.

# GE Equipment Delivery Requirements

The items on the GE Healthcare Site Readiness Checklist are REQUIRED to facilitate equipment delivery to the IS site. Equipment will not be delivered if these requirements are not satisfied.

GE Healthcare Site Readiness Checklist							
GEHC Global Order #:		Customer:					
GEHC On-site Representative:		MI Supplier:					
Name of customer reviewed with:		Lead Installer:					
GEHC PMI:		Phone Number:					
Target Site Prep Completion Date:		Helper:					
<b>The customer is responsible for proper site preparation and site readiness regardless of any GEHC inspections/assessments.</b>							
Item #	GEHC Minimum Requirements	Storage: Is item ready?	Predict (Pre-ship) Is this item ready?	Will item be ready?	Verify (Delivery): Is item ready?	Validate (Mech install): Is item ready?	Comments If "N", please enter in comments or action plan
1	Equipment installation drawings must match actual room size and must meet clearance requirements. Deviations that meet installation requirements may be red-lined, if red-lining is allowed by local code. Seismic requirements are identified on construction drawings.						
2	Delivery route to installation or storage area meets requirements and has been discussed and scheduled with the customer. Ensure floor protection is discussed, requirements identified, and will be available at time of delivery and installation.						
3	Rooms that will contain equipment, including storage areas, are dust free. Room security to prevent unauthorized access and theft has been discussed with customer. The customer is aware of these security issues, implications and responsibility.						
4	In room HVAC ductwork and units (in room) must be mechanically installed and dust free. Installation rooms appear to meet environmental conditions (see Further Definitions) and observed issues have been communicated to the customer. If being stored, storage area must meet PIM storage criteria.						
5	Ceiling grid is installed. Unistrut is located per the installation drawings, and permanent lighting is installed and operational.						
6	Floor is clean and prepared for final floor covering. Customer has verified floor leveling meets the equipment installation drawings and PIM specs and no visible defects are observed. Gantry and table baseplate are installed prior to delivery (if applicable).						
7	Access to a working phone at the facility for emergency use, including MR magnet delivery.						
8	All walls primed (final coat not needed on Day 1) and counter tops that will support equipment must be installed. No dust-producing cabinetry work in installation areas.						
9	Mechanical supplier has been provided with a set of equipment installation drawings for reference. For California, permitted construction drawings or PIM-specified installation drawings are required.						
10	Conduit/electrical cable ducting/dividers/ access flooring installed, with the exception of surface-mounted floor ducting. Wiring to the main disconnect panel is installed and compliant with equipment installation drawings or pre-installation manual.						

Issued Date: 7/9/07 Rev 11

**GE Healthcare**  
IS Services Design Center  
Milwaukee, Wisconsin  
Copyright 2009 General Electric Company - Proprietary to GE

SHEET TITLE: SITE READINESS  
MODALITY TYPE: DISCOVERY ST

THIS PLAN IS SUBMITTED TO SUGGEST LOCATION OF GE HEALTHCARE EQUIPMENT AND ASSOCIATED APPARATUS, ELECTRICAL WIRING, DETAILS, AND ROOM ARRANGEMENTS. IT IS NOT TO BE USED FOR CONSTRUCTION PURPOSES. IT IS NOT TO BE USED FOR ACTUAL CONSTRUCTION PURPOSES. HOWEVER, AND THE COMPANY CANNOT ACCEPT RESPONSIBILITY FOR ANY DAMAGES RESULTING THEREFROM.

PROJECT TITLE:  
TYPICAL CT-PET  
12-12F

PROJECT	REVISION
12-12f	03

DATE: 12.Mar.12  
DRAWN BY: TMS  
CHECKED BY: TMS

REVISION HISTORY:


SHEET  
C1

PIM R6

GE EQUIPMENT LISTING

EQUIPMENT ON ORDER FROM GE HEALTHCARE, INSTALLED BY GE HEALTHCARE, PER : NEITHER A QUOTE OR CON WAS ISSUED AT THE DATE OF THESE DRAWINGS

NOTE: LOCAL CONDITIONS MAY DICTATE THAT ITEMS IDENTIFIED IN THIS CATEGORY BE INSTALLED BY OTHERS.

ITEM NO.	QUANTITY ORDERED	REFER TO SHEET "D"	ITEM DESCRIPTION (* = EXISTING/REINSTALL)	WEIGHT	HEAT OUTPUT (PER HOUR)	DETAIL NO.	STRC PLAN	ELEC PLAN	↓	EQUIPMENT CROSS REFERENCE CHART	
										P	C
1			SMALL SCSI BOX	11 lbs	221 btu	P5050F	---	SCSI	S		P = PREAPPROVAL
2			POWER DISTRIBUTION UNIT	800 lbs	3412 btu	B7996L	.	PDU	C		C = CALCULATIONS/PENDING APPROVAL
3			PET DISPLAY HOST COMPUTER CABINET	46 lbs	3402 btu	P5056E	---	DC2	S		S = SPECIFICATIONS ONLY
4			OPERATOR'S CONSOLE / COMPUTER	493 lbs	8631 btu	B7858A	.	OC	S		
5			OPERATOR'S CHAIR				.		-		
6			STORAGE CABINET				.		-		
7			DISCOVERY ST GANTRY	8137 lbs	31007 btu	P5056A P5056B P5056C P5056D B7996ML B7996MK	.	CTPT	S		
8			PATIENT TABLE (WITHOUT PATIENT)	1609 lbs	1000 btu		.		S		

THE FOLLOWING ITEMS, WHICH HAVE BEEN ORDERED FROM GE HEALTHCARE, ARE TO BE INSTALLED BY THE CUSTOMER OR HIS CONTRACTOR.

50	1		MAIN DISCONNECT CONTROL			P5050R	---	A1	S		
----	---	--	-------------------------	--	--	--------	-----	----	---	--	--

SCALE: 1/4" = 1'-0"

EQUIPMENT LAYOUT

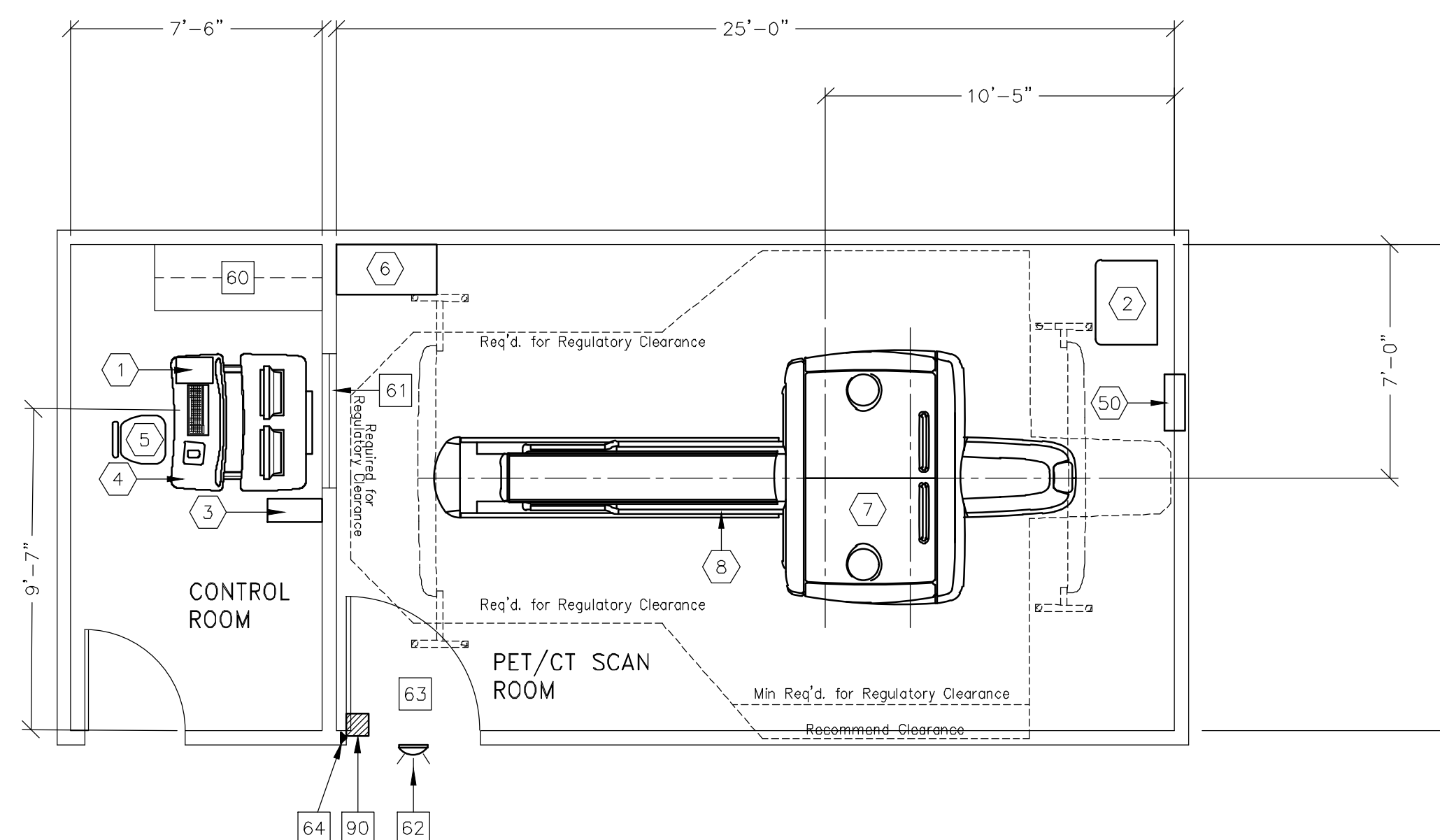
RECOMMENDED CEILING HEIGHT = 8'-0"

This equipment layout indicates the placement and interconnection of the indicated equipment components. There may be federal, state, and/or local requirements that could impact the placement of these components. It remains the Customer's responsibility for ensuring the site and final equipment placement complies with all applicable federal, state, and/or local requirements.

IMPORTANT CUSTOMER READINESS ALERT:

THIS EQUIPMENT INVOLVES THE USE OF RADIOACTIVE ISOTOPES, INCLUDING THOSE SOURCES NECESSARY FOR EQUIPMENT CALIBRATION. APPROPRIATE REGULATORY COMPLIANCE AND LICENSING MUST BE ARRANGED BY THE CUSTOMER EARLY IN THE PLANNING PROCESS AND THEN DEMONSTRATED/AVAILABLE FOR EQUIPMENT INSTALLATION.

NOTE: DELIVERY PATH DOWN CORRIDORS FOR GANTRY'S AND TABLE MUST BE EVALUATED PRIOR TO CONSTRUCTION, AS 90 DEGREE TURNS REQUIRE SPECIFIC CORRIDOR WIDTH.



ANCILLARY ITEMS

CUSTOMER/CONTRACTOR SUPPLIED AND INSTALLED ITEMS

ITEM NO.	ITEM DESCRIPTION (* INDICATES EXISTING)
60	COUNTER TOP WITH WALL CABINETS
61	LEAD GLASS WINDOW
62	X-RAY ON WARNING LIGHT - AVAILABLE FROM GE SUPPLY CALL 800-200-9760 GE CAT. NO. WX1A9W-DF-XIU
63	MINIMUM DOOR OPENING FOR EQUIPMENT DELIVERY IS 44 IN. W X 82 IN. H (118mm X 210mm), CONTINGENT ON A 96 IN. (2438mm) CORRIDOR WIDTH
64	DOOR LIMIT SWITCH (REQUIRED IN SOUTH CAROLINA, OTHERWISE NEEDED ONLY IF REQUIRED BY STATE/LOCAL CODES)
90	X-RAY ROOM WARNING LIGHT CONTROL PANEL REFERENCE JUNCTION POINT WLS ON SHEET 611 FOR DETAILED DESCRIPTION -E4506RL FOR WARNING LIGHT CONTROL ONLY.

THE FOLLOWING ITEMS ARE AVAILABLE FROM GE HEALTHCARE TECHNOLOGIES. CONTACT YOUR LOCAL GE HEALTHCARE SERVICE REPRESENTATIVE FOR PRICING AND AVAILABILITY.

GENERAL SPECIFICATIONS

- THE REQUIRED CEILING HEIGHT INDICATED ON THESE PLANS IS TO ENSURE EQUIPMENT FUNCTION IS NOT INHIBITED. CONSULT WITH YOUR LOCAL GEHC IS SPECIALIST REGARDING ACCEPTABILITY OF OTHER CEILING HEIGHTS.
- CHECK ALL DOOR OPENINGS AND HALLWAYS FROM DELIVERY LOCATION TO WHERE EQUIPMENT IS TO BE INSTALLED TO ENSURE THE ROUTE PHYSICALLY AND STRUCTURALLY WILL ACCOMMODATE THE EQUIPMENT AS SHIPPED.
- RADIATION PROTECTION REQUIREMENTS ARE NOT INDICATED ON THIS PLAN. WHERE NEEDED PER NATIONAL OR LOCAL CODE THEY SHALL BE SPECIFIED BY A QUALIFIED RADIOLOGICAL PHYSICIST.
- THE DEVELOPMENT OF THE EQUIPMENT LAYOUT, ROOM DIMENSIONS, MECHANICAL AND ELECTRICAL SUGGESTIONS IS PREDICATED UPON THE BEST INFORMATION OBTAINABLE FROM THE SITE, COUPLED WITH THE CUSTOMER'S KNOWN DESIRES. ARCHITECTURAL OR ELECTRICAL CHANGES INCLUDING RELOCATION OF EQUIPMENT ILLUSTRATED ON THIS DRAWING IS ALLOWED ONLY WITH NOTIFICATION, IN WRITING, AND REVIEW BY GEHC SERVICE DEPARTMENT. EQUIPMENT OPERATION, SERVICEABILITY, AND RESTRICTING CABLE LENGTHS, ETC., MAKE THIS ESSENTIAL FOR A PROPER IS. GEHC RESERVES THE RIGHT TO MAKE ON THE JOB CHANGES BECAUSE OF CUSTOMER REQUIREMENTS AND/OR OBSTACLES IN CONSTRUCTION, ETC.
- ALL WORK TO BE IN COMPLIANCE WITH NATIONAL AND LOCAL BUILDING SAFETY CODES.
- DIMENSIONS ARE TO FINISHED SURFACES OF ROOM

SITE ENVIRONMENT SPECIFICATIONS

- AMBIENT OPERATING TEMPERATURE: 65° TO 75° F (18° TO 24° C) MAXIMUM ALLOWABLE TEMPERATURE CHANGE OF 5° F (3° C)/HOUR, MAXIMUM ROOM TEMPERATURE GRADIENT 5° F (3° C)
- HUMIDITY: 30 TO 60 PERCENT NON-CONDENSING, MAXIMUM ALLOWABLE CHANGE OF 5 PERCENT/HOUR. STATIC CHARGES ASSOCIATED WITH LOWER HUMIDITY LEVELS MAY INTERFERE WITH SYSTEM OPERATION.
- ALTITUDE: NOT TO EXCEED 8,000 FT. (2438M) ABOVE SEA LEVEL.
- DO NOT RESTRICT THE AIR INTAKE OR AIR EXHAUST OF THE SYSTEM COMPONENTS.
- ENVIRONMENTAL CONDITIONS LISTED ABOVE MUST BE MAINTAINED AT ALL TIMES INCLUDING FOR EXAMPLE OVERNIGHT, WEEKENDS, AND HOLIDAYS.
- BACKGROUND RADIATION SHOULD BE KEPT TO A MINIMUM. RADIOACTIVE SOURCES MUST BE KEPT IN SHIELDED CONTAINERS AND THE EXAMINATION ROOM SHIELDED FROM EXTERNAL SOURCES.
- DO NOT PLACE PET EQUIPMENT NEAR REGISTERS, WINDOWS OR OTHER COMPONENTS THAT COULD AFFECT TEMPERATURE LEVEL CHANGES IN THE PET EQUIPMENT VICINITY.

MAGNETIC INTERFERENCE SPECIFICATIONS

SCANNER MUST BE LOCATED IN AMBIENT STATIC MAGNETIC FIELDS OF LESS THAN 1.0 GAUSS TO GUARANTEE SPECIFIED IMAGING PERFORMANCE.  
COMPUTER EQUIPMENT MUST BE LOCATED IN AMBIENT STATIC MAGNETIC FIELDS OF LESS THAN 10 GAUSS TO GUARANTEE DATA INTEGRITY.  
DIAGNOSTIC CONSOLE MUST BE LOCATED IN AMBIENT STATIC MAGNETIC FIELDS OF LESS THAN 1 GAUSS TO OBTAIN SPECIFIED GEOMETRIC LINEARITY.

GE Healthcare  
IS Services Design Center  
Milwaukee, Wisconsin

SHEET TITLE: EQUIPMENT LAYOUT  
MODALITY TYPE: DISCOVERY ST  
THIS PLAN IS SUBMITTED TO SUGGEST LOCATION OF GE HEALTHCARE EQUIPMENT AND ASSOCIATED APPARATUS, ELECTRICAL WIRING DETAILS AND ROOM ARRANGEMENTS. GE HEALTHCARE IS NOT RESPONSIBLE FOR THE ACCURACY OF THE INFORMATION PROVIDED FOR ACTUAL EQUIPMENT INSTALLATION. GE HEALTHCARE ACCEPTS NO LIABILITY FOR ANY DAMAGES RESULTING THEREFROM.

PROJECT TITLE:  
TYPICAL CT-PET  
12-12f

PROJECT: 12-12f  
REVISION: 03  
DATE: 12.Mar.12  
DRAWN BY: TMS  
CHECKED BY: TMS

REVISION HISTORY:  
\_\_\_\_\_  
\_\_\_\_\_  
\_\_\_\_\_

SHEET  
A1

TYPICAL WALL SUPPORT ELEVATIONS

SCALE: 1/4" = 1'-0"

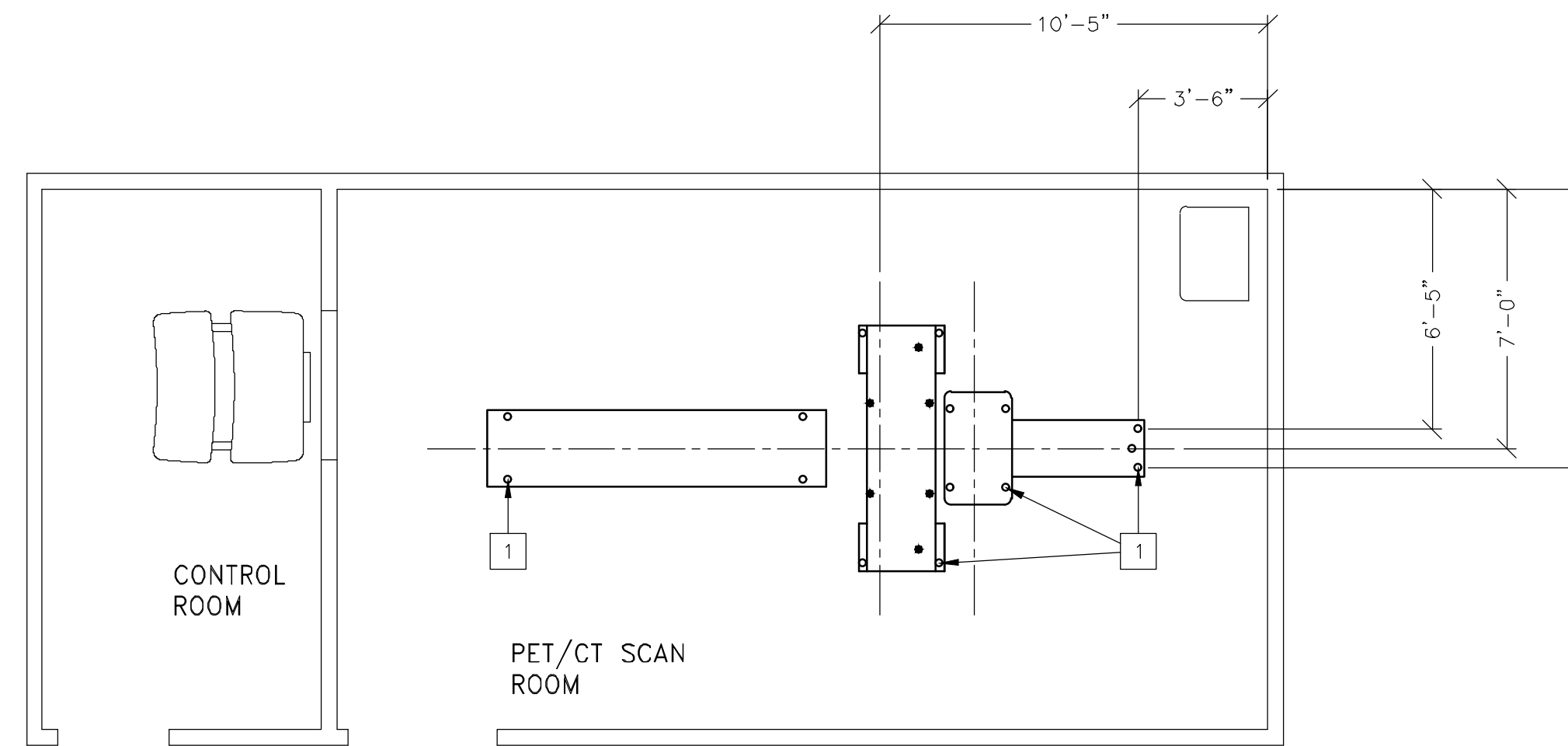
STRUCTURAL LAYOUT

RECOMMENDED CEILING HEIGHT = 8'-0"

STRUCTURAL SUPPORT METHODS

CUSTOMER/CONTRACTOR SUPPLIED AND INSTALLED ITEMS

ITEM NO.	ITEM DESCRIPTION (* INDICATES EXISTING)
1	FLOOR CONTACT AREA FOR DISCOVERY ST GANTRY AND PATIENT TABLE. SEE DETAIL P5055 ON SHEET S2 FOR MORE INFORMATION. DISCOVERY ST Seismic Zone ANCHORING HARDWARE (PDU) ANCHORS = Hilti KB3 - 3/8 x 3.75 in. (4 ea.) (CONTROL) ANCHORS = Hilti KB3 - 3/8 x 3.75 in. (4 ea.) ALL ANCHORS TO INCLUDE 1 FLATWASHER, 1 LOCKWASHER AND 1 NUT. THE FOLLOWING ARE SHIPPED WITH THE GE EQUIPMENT AND ARE TO BE INSTALLED BY THE CUSTOMER'S CONTRACTOR UNDER THE SUPERVISION OF GE PERSONNEL AT TIME OF INSTALLATION: - ALL ANCHORS FOR CT/PET GANTRY AND TABLE. - ALL BRACKETS FOR PDU AND CONTROL.



STRUCTURAL NOTES

- METHODS OF SUPPORT FOR THE STEELWORK THAT WILL PERMIT ATTACHMENT TO STRUCTURAL STEEL OR THROUGH BOLTS IN CONCRETE CONSTRUCTION SHOULD BE FAVORED. DO NOT USE CONCRETE OR MASONRY ANCHORS IN DIRECT TENSION.
- ALL UNITS THAT ARE WALL MOUNTED OR WALL SUPPORTED ARE TO BE PROVIDED WITH SUPPORTS WHERE NECESSARY. WALL SUPPORTS ARE TO BE SUPPLIED AND INSTALLED BY THE CUSTOMER OR HIS CONTRACTORS. SEE PLAN AND DETAIL SHEETS FOR SUGGESTED LOCATIONS AND MOUNTING HOLE LOCATIONS.
- ALL CEILING MOUNTED FIXTURES, AIR VENTS, SPRINKLERS, ETC. TO BE FLUSH MOUNTED, OR SHALL NOT EXTEND MORE THAN 6,35mm (1/4") BELOW THE FINISHED CEILING.
- FLOOR SLABS ON WHICH EQUIPMENT IS TO BE INSTALLED MUST BE LEVEL TO 3.00mm (1/8") IN 3050mm (10'-0").
- DIMENSIONS ARE TO FINISHED SURFACES OF ROOM.
- CUSTOMER'S CONTRACTOR MUST PROVIDE ALL PENETRATIONS IN POST TENSION FLOORS.
- CUSTOMER'S CONTRACTOR MUST PROVIDE AND INSTALL ANY NON-STANDARD ANCHORING. DOCUMENTS FOR STANDARD ANCHORING METHODS ARE INCLUDED WITH GE EQUIPMENT DRAWINGS FOR GEOGRAPHIC AREAS THAT REQUIRE SUCH DOCUMENTATION.
- CUSTOMER'S CONTRACTOR MUST PROVIDE AND INSTALL HARDWARE FOR "THROUGH THE FLOOR" ANCHORING AND/OR ANY BRACING UNDER ACCESS FLOORS. THIS CONTRACTOR MUST ALSO PROVIDE FLOOR DRILLING THAT CANNOT BE COMPLETED BECAUSE OF AN OBSTRUCTION ENCOUNTERED WHILE DRILLING BY THE GE INSTALLER SUCH AS REBAR ETC.
- IT IS THE CUSTOMER'S RESPONSIBILITY TO PERFORM ANY FLOOR OR WALL PENETRATIONS THAT MAY BE REQUIRED. THE CUSTOMER IS ALSO RESPONSIBLE FOR ENSURING THAT NO SUBSURFACE UTILITIES (E.G., ELECTRICAL OR ANY OTHER FORM OF WIRING, CONDUITS, PIPING, DUCT WORK OR STRUCTURAL SUPPORTS (I.E. POST TENSION CABLES OR REBAR)) WILL INTERFERE OR COME IN CONTACT WITH SUBSURFACE PENETRATION OPERATIONS (E.G. DRILLING AND INSTALLATION OF ANCHORS/SCREWS) PERFORMED DURING THE INSTALLATION PROCESS. TO ENSURE WORKER SAFETY, GE INSTALLERS WILL PERFORM SURFACE PENETRATION OPERATIONS ONLY AFTER THE CUSTOMER'S VALIDATION AND COMPLETION OF THE "GE SURFACE PENETRATION PERMIT"

SHEET TITLE: STRUCTURAL LAYOUT  
MODALITY TYPE: DISCOVERY ST

THIS PLAN IS SUBMITTED TO SUGGEST LOCATION OF GE HEALTHCARE EQUIPMENT AND ASSOCIATED APPARATUS, ELECTRICAL WIRING DETAILS AND ROOM ARRANGEMENTS. GE HEALTHCARE DOES NOT WARRANT THE ACCURACY OF THE INFORMATION PROVIDED OR TO ACTUAL EQUIPMENT SIZES TO BE INSTALLED. IT IS NOT TO BE USED FOR ACTUAL CONSTRUCTION PURPOSES; HOWEVER, AND THE COMPANY CANNOT ACCEPT RESPONSIBILITY FOR ANY DAMAGES RESULTING THEREFROM.

TYPICAL CT-PET  
12-12F

PROJECT TITLE:

PROJECT: 12-12f REVISION: 03

DATE: 12.Mor.12  
DRAWN BY: TMS  
CHECKED BY: TMS

REVISION HISTORY:

\_\_\_\_\_  
\_\_\_\_\_  
\_\_\_\_\_

SHEET  
S1

**GE Healthcare**  
IS Services Design Center  
Milwaukee, Wisconsin

P1M RG

FLOOR MOUNTING DETAIL: DISCOVERY ST INSTALLATION METHODS

P5055

REV. DATE: 02/19/08

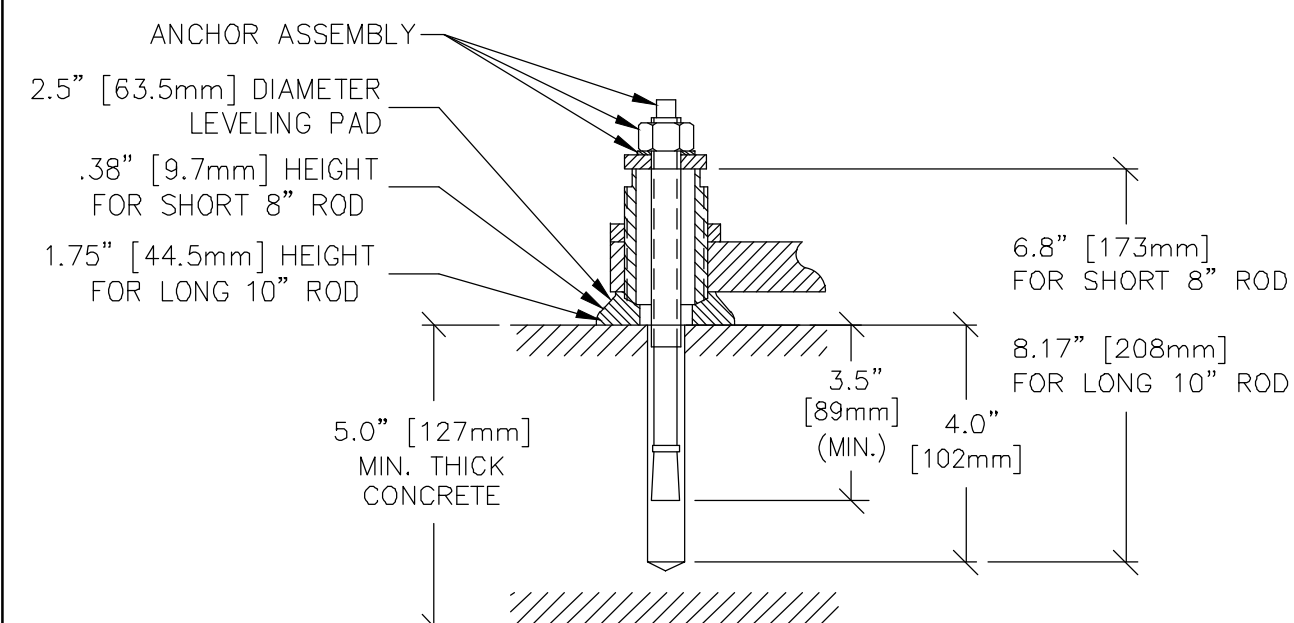
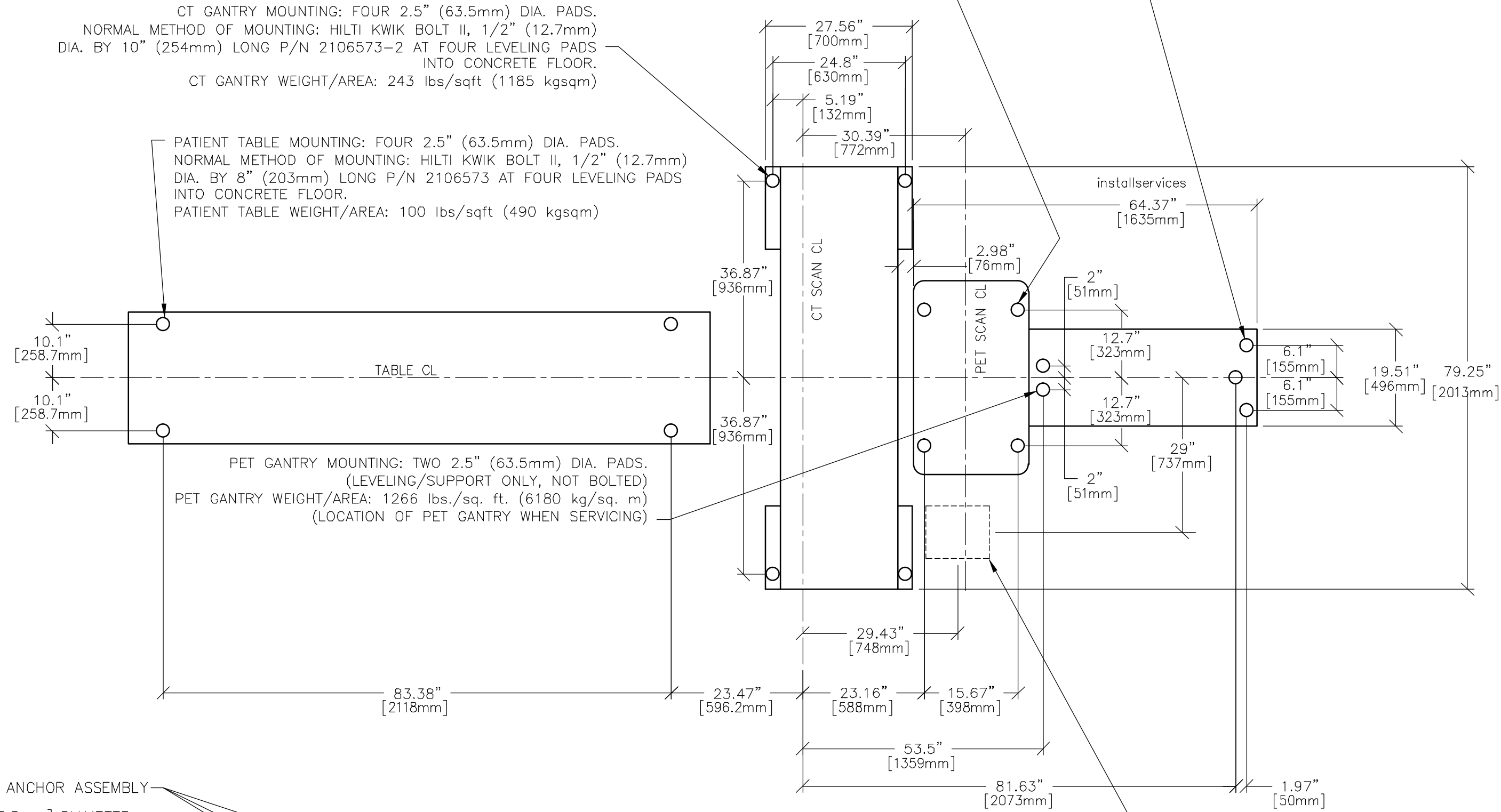
PET GANTRY MOUNTING: THREE 2.5" (63.5mm) DIA. PADS.  
 NORMAL METHOD OF MOUNTING: HILTI KWIK BOLT II, 1/2" (12.7mm)  
 DIA. BY 8" (203mm) LONG P/N 2106573 AT THREE LEVELING PADS  
 INTO CONCRETE FLOOR.  
 PET GANTRY WEIGHT/AREA: 1266 lbs./sqft (6180 kgsqm)  
 (LOCATION OF PET GANTRY WHEN SERVICING)

PET GANTRY MOUNTING: FOUR 2.5" (63.5mm) DIA. PADS.  
 NORMAL METHOD OF MOUNTING: HILTI KWIK BOLT II, 1/2" (12.7mm)  
 DIA. BY 8" (203mm) LONG P/N 2106573 AT FOUR LEVELING PADS  
 INTO CONCRETE FLOOR.  
 PET GANTRY WEIGHT/AREA: 1266 lbs./sqft (6180 kgsqm)  
 (LOCATION OF PET GANTRY WHEN SCANNING)

CT GANTRY MOUNTING: FOUR 2.5" (63.5mm) DIA. PADS.  
 NORMAL METHOD OF MOUNTING: HILTI KWIK BOLT II, 1/2" (12.7mm)  
 DIA. BY 10" (254mm) LONG P/N 2106573-2 AT FOUR LEVELING PADS  
 INTO CONCRETE FLOOR.  
 CT GANTRY WEIGHT/AREA: 243 lbs./sqft (1185 kgsqm)

PATIENT TABLE MOUNTING: FOUR 2.5" (63.5mm) DIA. PADS.  
 NORMAL METHOD OF MOUNTING: HILTI KWIK BOLT II, 1/2" (12.7mm)  
 DIA. BY 8" (203mm) LONG P/N 2106573 AT FOUR LEVELING PADS  
 INTO CONCRETE FLOOR.  
 PATIENT TABLE WEIGHT/AREA: 100 lbs./sqft (490 kgsqm)

PET GANTRY MOUNTING: TWO 2.5" (63.5mm) DIA. PADS.  
 (LEVELING/SUPPORT ONLY, NOT BOLTED)  
 PET GANTRY WEIGHT/AREA: 1266 lbs./sq. ft. (6180 kg/sq. m)  
 (LOCATION OF PET GANTRY WHEN SERVICING)



CABLE ACCESS AREA, 11.81" (300mm) by 9.84" (250mm)

SUPPORT AREAS OF THE PATIENT TABLE AND GANTRY  
 MUST REST ON AT LEAST 5" (127MM) OF SOLID CONCRETE.  
 REFER TO PRE-INSTALLATION MANUAL FOR COMPLETE SITING REQUIREMENTS.

DETAIL NOT TO SCALE

SHEET TITLE: STRUCTURAL DETAILS

MODALITY TYPE: DISCOVERY ST

THIS PLAN IS SUBMITTED TO SUGGEST LOCATION OF GE HEALTHCARE EQUIPMENT AND ASSOCIATED APPARATUS, ELECTRICAL WIRING DETAILS AND ROOM ARRANGEMENTS. IT IS NOT TO BE USED FOR CONSTRUCTION PURPOSES. IT IS NOT TO BE USED FOR ACTUAL CONSTRUCTION PURPOSES; HOWEVER, THE COMPANY CANNOT ACCEPT RESPONSIBILITY FOR ANY DAMAGES RESULTING THEREFROM.

PROJECT TITLE:  
 TYPICAL CT-PET  
 12-12F

PROJECT	REVISION
12-12f	03

DATE: 12.Mar.12  
 DRAWN BY: TMS  
 CHECKED BY: TMS

REVISION HISTORY:

\_\_\_\_\_  
 \_\_\_\_\_  
 \_\_\_\_\_  
 \_\_\_\_\_

SHEET

S2



GE Healthcare

IS Services Design Center  
 Milwaukee, Wisconsin

PIM RG

SCALE: 1/4" = 1'-0"

ELECTRICAL PLAN

RECOMMENDED CEILING HEIGHT = 8'-0"

JUNCTION POINT DESCRIPTIONS

POINT	DESCRIPTION	QTY.	THE FOLLOWING MATERIALS ARE TO BE SUPPLIED AND INSTALLED BY THE CUSTOMER'S ELECTRICAL CONTRACTOR	
			HARDWARE	DETAIL NO., SHT. E3
A1	MAIN DISCONNECT	1	MAIN DISCONNECT PANEL, INCLUDED IN ORDER EMERGENCY OFF PUSHBUTTON STATION (SED) IS INCLUDED.	
CTPT	CT-PET SCANNER	3	3 1/2 IN. DIA. CHASE NIPPLES	ELEC-25
DLK1	ROOM SWITCH (NEEDED ONLY IF REQUIRED BY STATE/LOCAL CODES)	1	ROOM DOOR INTERLOCK LIMIT SWITCH IN FRAME - NORMALLY OPEN (24V) SINGLE GANG BOX	
DC	OPERATORS CONSOLE	2	3 1/2 IN. DIA. CHASE NIPPLE	ELEC-25
DCR	DISPLAY HOST COMPUTER	1	EXTERNALLY CONNECTED	
PDU	POWER DISTRIBUTION UNIT	1	SPLIT COVERPLATE 1 1/2 IN. DIA. CHASE NIPPLE 4 1/2 IN. DIA. CHASE NIPPLE 1/2 IN. 90 DEGREE CONNECTOR 2 1/2 FT. LENGTH OF 2 IN. FLEXIBLE METAL CONDUIT SUITABLE CONNECTORS 1 1/2 X 1/2 X 4 IN. BOX 6 FT. LENGTH OF 1/2 IN. FLEXIBLE METAL CONDUIT	ELEC-22 ELEC-25
SCS1	SCS1 BOX	1	CONNECT TO WORKSTATION CPU TOWER.	
SED	EMERGENCY OFF	1	SINGLE GANG 2 1/8 IN. DEEP FLUSH MOUNTED JUNCTION BOX.	ELEC-16
WL	WARNING LIGHT	1	COVERPLATE SINGLE GANG BOX X-RAY DN INCANDESCENT LIGHT FIXTURE - DO NOT USE FLUORESCENT FIXTURES. E4502RL WARNING LIGHT 24V CONTROL OR EQUIVALENT.	
WLC	WARNING LIGHT CONTROLLER AVAILABLE FROM GEHC. CALL 800-556-5102 OR LOCAL GE INSTALLATION PROJECT MGR.	1	E4502RL WARNING LIGHT CONTROL OR EQUIVALENT MAX 24V CONTROLLER	ELEC-72

**ELECTRICAL OUTLET LEGEND**  
CUSTOMER/CONTRACTOR SUPPLIED AND INSTALLED ITEMS. HEIGHT ABOVE FLOOR DETERMINED BY LOCAL CODES UNLESS OTHERWISE SPECIFIED.

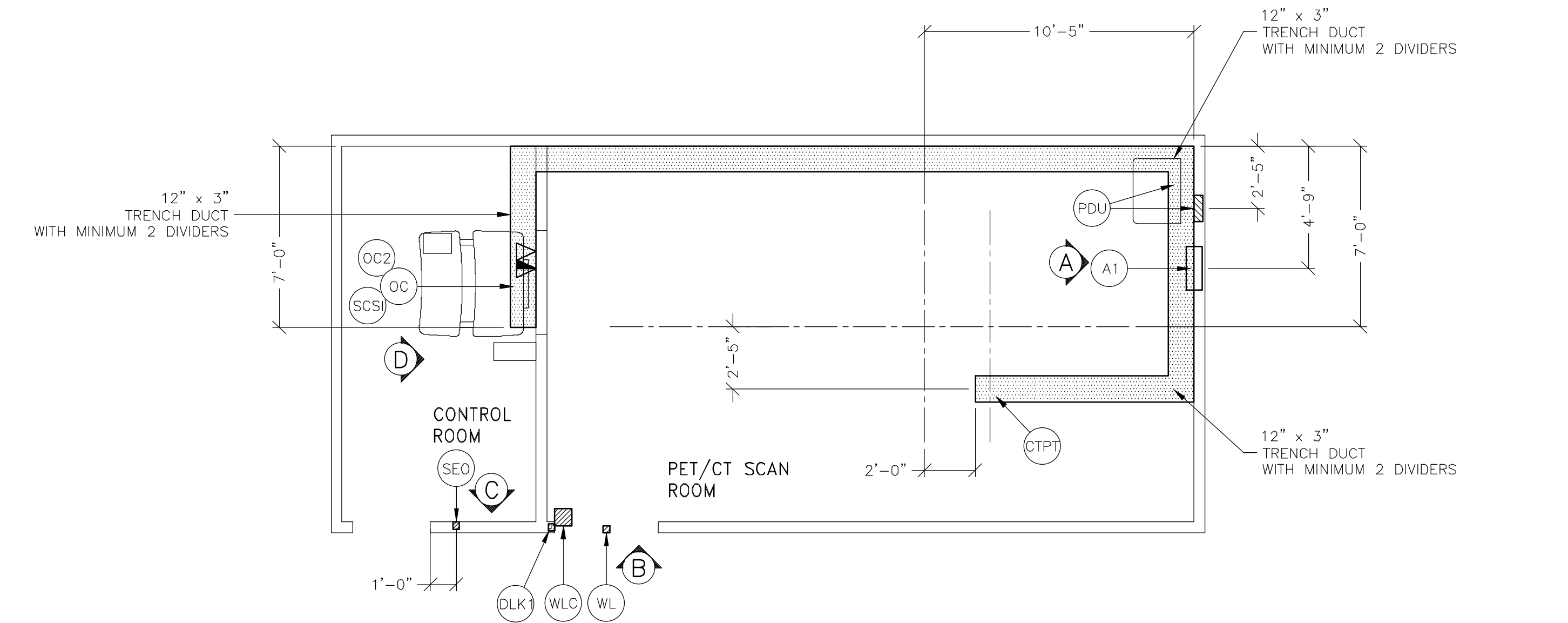
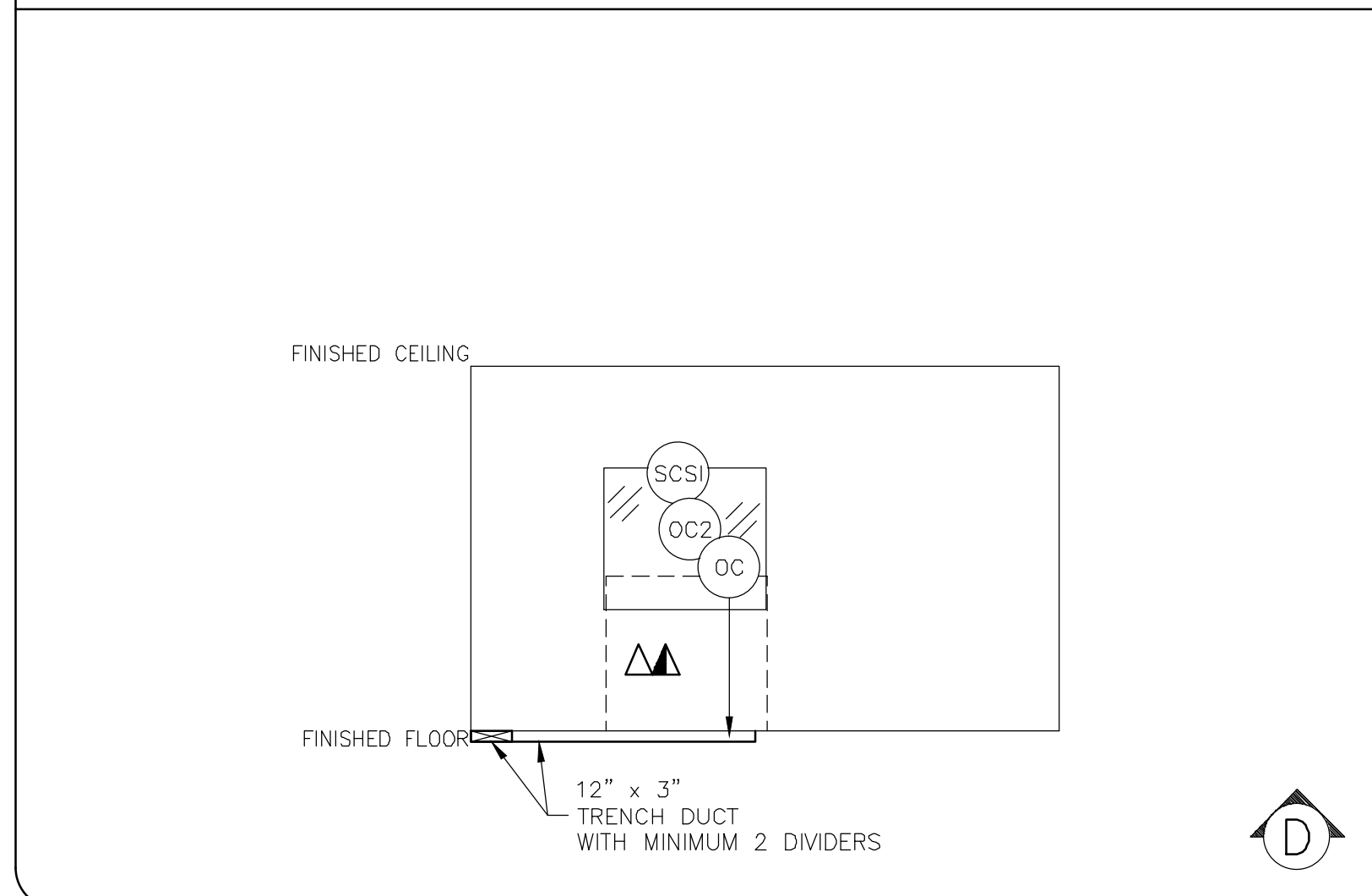
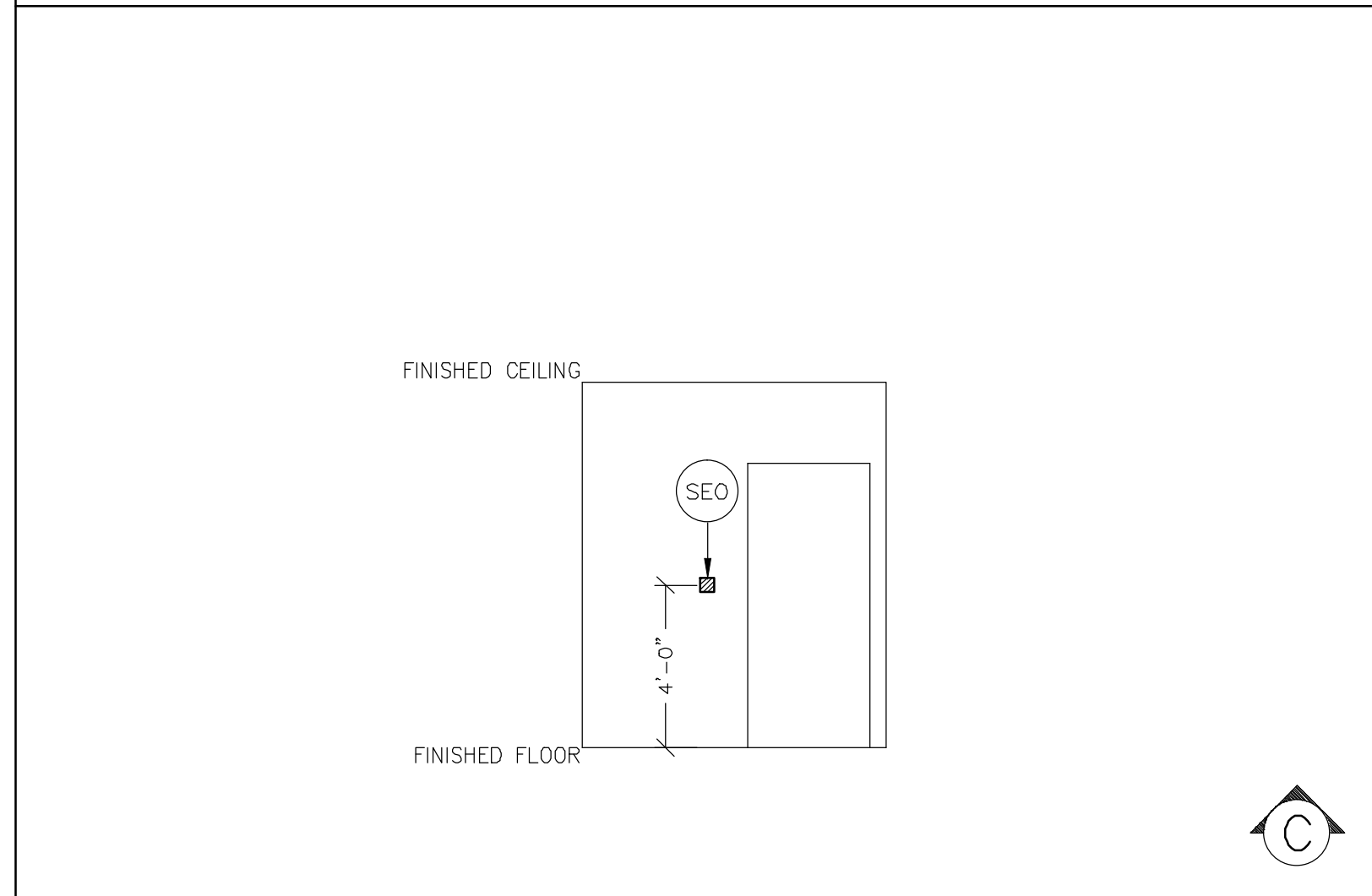
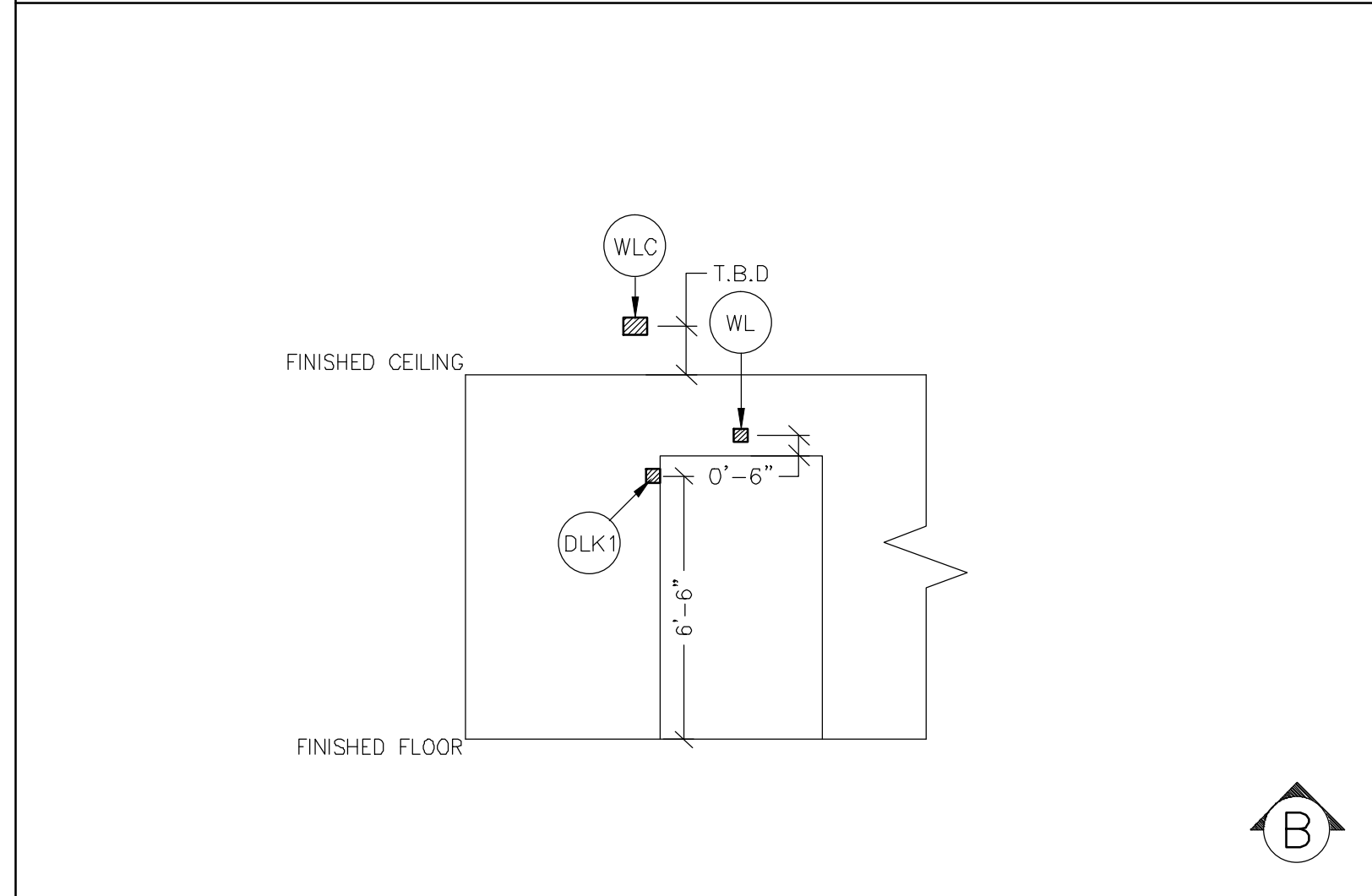
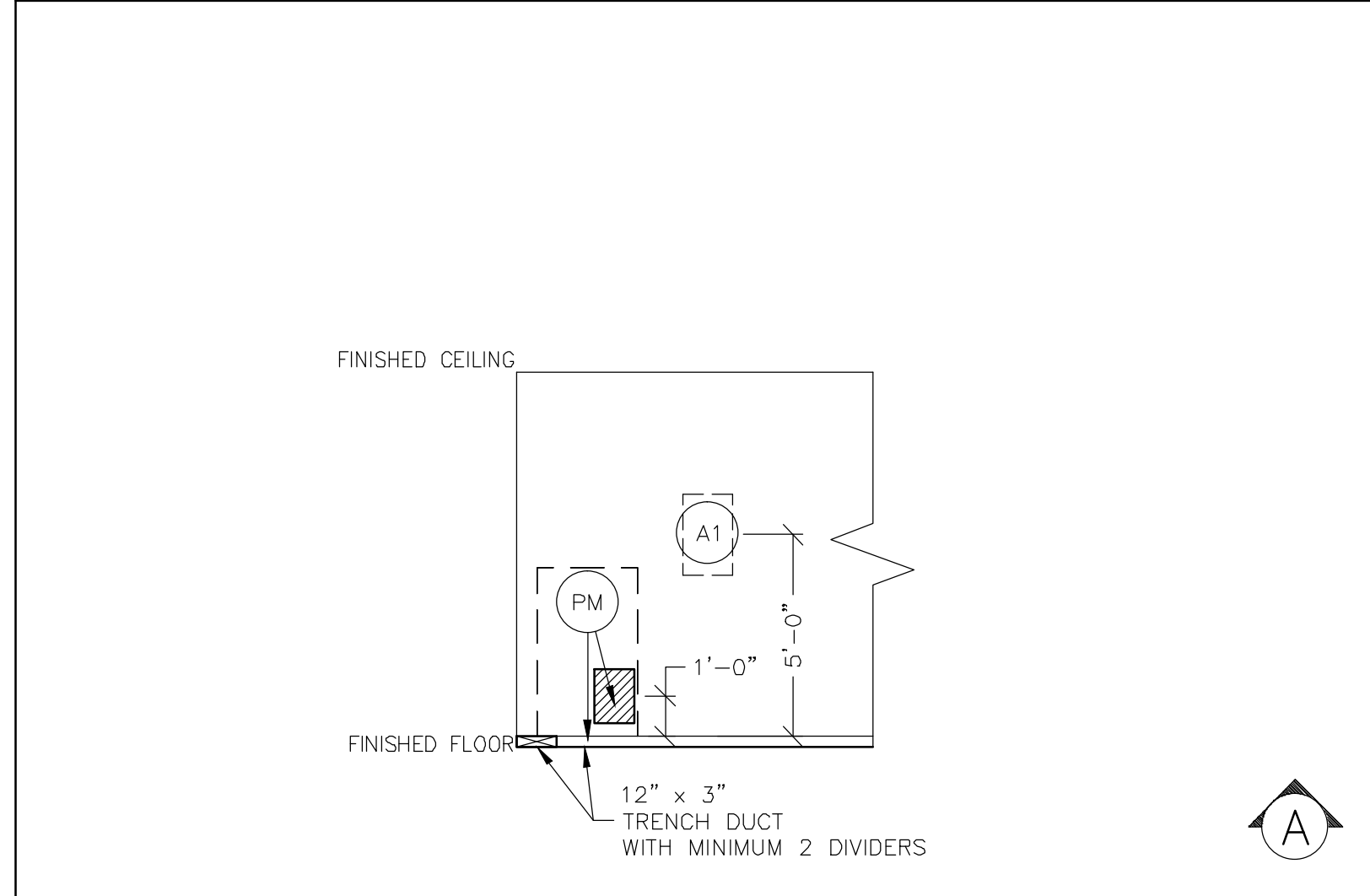
△	DEDICATED TELEPHONE LINE(S) (SEE ELECTRICAL DETAIL ELEC-1 OR ELEC-67)
▲	NETWORK OUTLET (SEE ELECTRICAL DETAILS ELEC-83 AND ELEC-84 OR ELEC-87)

**DUCT HATCHING LEGEND**

	ABOVE CEILING DUCT
	UNDER FLOOR DUCT
	TRENCH DUCT (FLUSH FLOOR)
	SURFACE FLOOR DUCT
	ABOVE CEILING CONDUIT
	BELOW FLOOR CONDUIT

- JUNCTION POINT NOTES**
- ALL JUNCTION BOXES, CONDUIT, DUCT, DUCT DIVIDERS, SWITCHES, CIRCUIT BREAKERS, ETC., ARE TO BE SUPPLIED AND INSTALLED BY CUSTOMER'S ELECTRICAL CONTRACTOR.
  - CONDUIT AND DUCT RUNS SHALL HAVE SWEEP RADIUS BENDS
  - CONDUITS AND DUCT ABOVE CEILING OR BELOW FINISHED FLOOR MUST BE INSTALLED AS NEAR TO CEILING OR FLOOR AS POSSIBLE TO REDUCE RUN LENGTH.
  - CEILING MOUNTED JUNCTION BOXES ILLUSTRATED ON THIS PLAN MUST BE INSTALLED FLUSH WITH FINISHED CEILING.
  - ALL DUCTWORK MUST MEET THE FOLLOWING REQUIREMENTS:
    - DUCTWORK SHALL BE METAL WITH DIVIDERS AND HAVE REMOVABLE, ACCESSIBLE COVERS.
    - DUCTWORK SHALL BE CERTIFIED/RATED FOR ELECTRICAL POWER PURPOSES.
    - DUCTWORK SHALL BE ELECTRICALLY AND MECHANICALLY BONDED TOGETHER IN AN APPROVED MANNER.
    - PVC AS A SUBSTITUTE MUST BE USED IN ACCORDANCE WITH ALL LOCAL AND NATIONAL CODES.
  - ALL OPENINGS IN ACCESS FLOORING ARE TO BE CUT OUT AND FINISHED OFF WITH GROMMET MATERIAL BY THE CUSTOMER'S CONTRACTOR.
  - GENERAL CONTRACTOR TO INSERT PULL CORDS FOR ALL CABLE RUN CONDUITS BETWEEN THE EQUIPMENT ROOM AND THE OPERATORS CONTROL ROOM.
  - 10 FOOT PIGTAILS AT ALL JUNCTION POINTS.
  - ALL WIRING MUST BE THHN OR TFFN STRANDED COPPER THERMOPLASTIC 600 VOLT OR EQUIVALENT INSULATION. ALUMINUM OR SOLID WIRES ARE NOT ALLOWED.
  - GROUNDING IS CRITICAL TO EQUIPMENT FUNCTION AND PATIENT SAFETY. SITE MUST CONFORM TO WIRING SPECIFICATIONS SHOWN ON THIS PLAN.

PLEASE SEE BELOW FOR ADDITIONAL REQUIRED CONDUIT RUNS AND SIZES.



**FEEDER TABLE - DISCOVERY ST** REV. DATE: 20Apr.11

\* CALCULATIONS BASED UPON NOMINAL VOLTAGE, WIRE SIZE IN AWG.  
 \* RECOMMENDED FEEDER SIZES FROM DISTRIBUTION TRANSFORMER TO THE POWER CABINET  
 \* NEUTRAL MUST BE TERMINATED INSIDE THE MAIN DISCONNECT PANEL AND NOT AT ANY GE CABINET.  
 \* THE GROUNDING CONDUCTOR ( ) WILL BE A 1/0 MINIMUM. THIS GROUND WILL RUN FROM THE EQUIPMENT BACK TO THE FACILITY POWER SOURCE/MAIN GROUNDING POINT AND ALWAYS TRAVEL IN THE SAME CONDUIT WITH THE FEEDERS AND NEUTRAL.  
 \* MINIMUM SIZE FOR CIRCUIT BREAKER, NEC ARTICLE 517-73.  
 \* FOR A FULL SYSTEM UPS, REFER TO ELECTRICAL DETAILS FOR UPS FEEDER WIRES.

RUN LENGTH IN FEET	POWER SUPPLY VOLTAGE											
	342-418 380		360-440 400		378-462 420		396-484 440		414-506 460		432-528 480	
	FEEDER	GROUND	FEEDER	GROUND	FEEDER	GROUND	FEEDER	GROUND	FEEDER	GROUND	FEEDER	GROUND
0-150	2	(1/0)	2	(1/0)	2	(1/0)	3	(1/0)	3	(1/0)	3	(1/0)
150-200	1	(1/0)	1	(1/0)	2	(1/0)	2	(1/0)	3	(1/0)	3	(1/0)
200-250	1/0	(1/0)	1	(1/0)	1	(1/0)	1	(1/0)	2	(1/0)	2	(1/0)
250-300	2/0	(1/0)	2/0	(1/0)	1/0	(1/0)	1	(1/0)	1	(1/0)	1	(1/0)
300-350	3/0	(1/0)	2/0	(1/0)	2/0	(1/0)	1/0	(1/0)	1/0	(1/0)	1	(1/0)
350-400	4/0	(1/0)	3/0	(1/0)	3/0	(1/0)	2/0	(1/0)	2/0	(1/0)	1/0	(1/0)

**ADDITIONAL CONDUIT RUNS FOR ALL PET/CT 560, 600, 690 VCT, STE, AND ST SYSTEMS (BY CONTRACTOR)**

CONDUITS REQUIRED FOR BASE SYSTEM (CONDUITS ARE LOCATED ABOVE CEILING)

REV DATE: 07Apr.11

WL	TO	WLC	ONE 1/2" CND.
WLC	TO	PDU	ONE 1/2" CND.
PDU	TO	A1	ONE CND. AS REQ'D
A1	TO	SED	ONE 1/2" CND.
A1	TO	FEEDER	ONE CND. AS REQ'D
WLC	TO	120-V 1Ø POWER	CND. AS REQ'D
DLK1	TO	PDU	ONE 1/2" CND.

NOTE: SEE E2 PAGE FOR MAXIMUM RUN LENGTHS

**CONTRACTOR SUPPLIED AND INSTALLED WIRING**  
ELECTRICAL CONTRACTOR SHALL RING OUT AND TAG ALL WIRES AT BOTH ENDS.

WIRE RUN, FROM - TO	QUANTITY, WIRE SIZE/COLOR
A1 > SED	1-ND 14 BLACK, 1-ND 14 WHITE, 1-ND 14 GREEN
A1 > PDU	3-BLACK, 1 GREEN - REFER TO FEEDER TABLE
480-V > A1	3 BLACK, 1 WHITE, 1 GREEN - REFER TO FEEDER TABLE
WLC > PDU	1-ND 14 BLACK, 1-ND 14 WHITE, 1-ND 14 GREEN
WLC > 1 PHASE	1-ND 14 BLACK, 1-ND 14 WHITE, 1-ND 14 GREEN
WL > WLC	2-ND 14 BLACK, 1-ND 14 RED, 1-ND 14 WHITE

**GE Healthcare**  
IS Services Design Center  
Milwaukee, Wisconsin

SHEET TITLE: ELECTRICAL LAYOUT  
MODALITY TYPE: DISCOVERY ST

THIS PLAN IS SUBMITTED TO SUGGEST LOCATION OF GE HEALTHCARE EQUIPMENT AND ASSOCIATED APPARATUS, ELECTRICAL WIRING DETAILS AND ROOM ARRANGEMENTS. GE HEALTHCARE SHALL BE RESPONSIBLE FOR VERIFYING THE LOCATION OF ALL EQUIPMENT TO ACTUAL CONSTRUCTION PURPOSES; HOWEVER, AND THE COMPANY CANNOT ACCEPT RESPONSIBILITY FOR ANY DAMAGES RESULTING THEREFROM.

PROJECT TITLE:  
**TYPICAL CT-PET 12-12F**

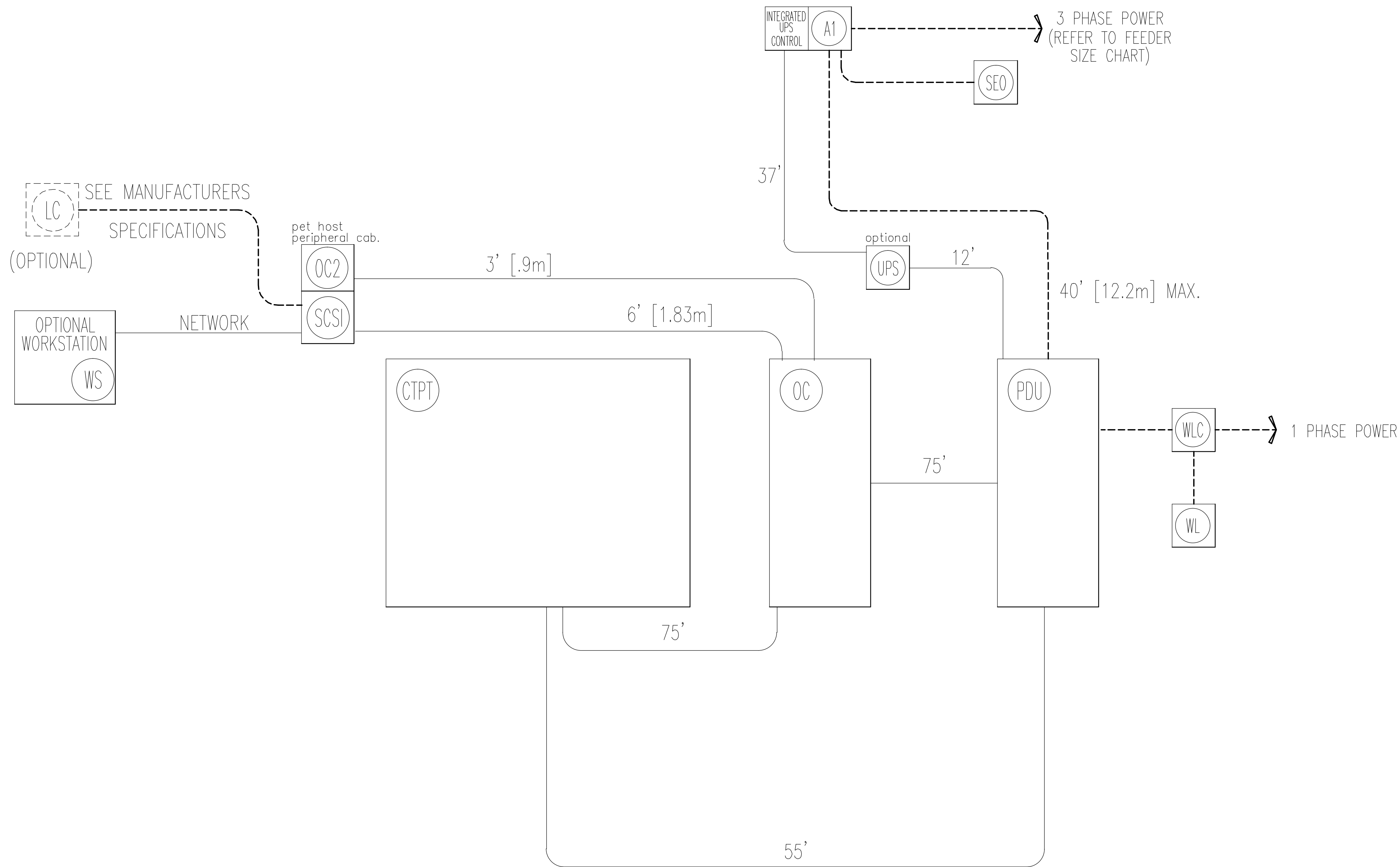
PROJECT: 12-12f  
REVISION: 03

DATE: 12.Mar.12  
DRAWN BY: TMS  
CHECKED BY: TMS

REVISION HISTORY:

SHEET  
**E1**

INTERCONNECT DIAGRAM



POWER SPECIFICATIONS

Discovery ST HP-60

(REV. DATE 12Apr11)

VOLTAGE PRIMARY SOURCE IS REQUIRED FOR ALL INSTALLATIONS.  
 RANGE OF LINE VOLTAGES: NOMINAL LINE VOLTAGE OF 380 TO 480, 3 PHASE, 50 OR 60 Hz.  
 REQUIRED POWER SUPPLY: WYE CONNECTED.  
 MAXIMUM DAILY VOLTAGE VARIATION MUST FALL WITHIN ONE OF THE RANGES IN TABLE A.

TABLE A ALLOWABLE INPUT VOLTAGES/CURRENT DEMAND

NOMINAL VOLTAGE	ABSOLUTE RANGE	CURRENT (AMPS)		MINIMUM STANDARD OVERCURRENT PROTECTION
		MOMENTARY	CONTINUOUS	
380	342-418	137	30	110-A
400	360-440	130	29	110-A
420	378-462	124	27	110-A
440	396-484	118	26	90-A
460	414-506	113	25	90-A
<b>480</b>	<b>432-528</b>	<b>108</b>	<b>24</b>	<b>90-A</b>

(ALL CALCULATIONS BASED UPON NOMINAL VOLTAGE)

PHASE-BALANCE.

PHASE-TO-PHASE VOLTAGES MUST BE WITHIN ±2 PERCENT OF THE LOWEST PHASE-TO-PHASE VOLTAGE. MAXIMUM ALLOWABLE TRANSIENT VOLTAGE EXCURSIONS ARE 2.5 PERCENT OF RATED LINE VOLTAGE AT A MAXIMUM DURATION OF 1 CYCLE AND FREQUENCY OF 10 TIMES PER HOUR.

VOLTAGE TRANSIENT OR IMPULSE ON THE INCOMING POWER MUST BE HELD TO A MINIMUM. TRANSIENTS CAUSED BY LIGHTNING, SURGES, LOAD SWITCHING, STATIC ELECTRICITY ETC. CAN CAUSE SCAN ABORTS OR, IN EXTREME INSTANCES, COMPONENT FAILURE IN THE COMPUTER SUBSYSTEM.

POWER DEMAND

CONTINUOUS POWER DEMAND = 34 KVA (MAX DEMAND = 90 KVA)

TABLE B MAXIMUM MOMENTARY POWER DEMAND.

DEMAND	Discovery ST
KVA *	90
POWER FACTOR AT	0.85

\* DEMAND INCLUDES POWER FOR ENTIRE CT SYSTEM. LINE VOLTAGE REGULATION AT MAXIMUM POWER DEMAND MUST BE LESS THAN OR EQUAL TO 6 PERCENT.

DISTRIBUTION TRANSFORMER

FOR A SINGLE UNIT INSTALLATION, THE MINIMUM TRANSFORMER SIZE IS 112.5 KVA. GE DOES NOT RECOMMEND USING A REGULATION DEVICE.

NOTE: THE CT SYSTEM MUST NOT BE POWERED IN A MULTIPLE INSTALLATION WHERE FILM CHANGERS ARE USED. FILM CHANGERS UTILIZE A LARGE NUMBER OF HIGH-POWERED CLOSELY SPACED EXPOSURES WHICH MAY COINCIDE WITH THE CT SCAN.

ELECTRICAL NOTES

- NOTE 1: ALL WIRES SPECIFIED SHALL BE COPPER STRANDED, FLEXIBLE, THERMO-PLASTIC, COLOR CODED, CUT 10 FOOT LONG AT OUTLET BOXES, DUCT TERMINATION POINTS OR STUBBED CONDUIT ENDS. ALL CONDUCTORS, POWER, SIGNAL AND GROUND, MUST BE RUN IN A CONDUIT OR DUCT SYSTEM. ELECTRICAL CONTRACTOR SHALL RING OUT AND TAG ALL WIRES AT BOTH ENDS. WIRE RUNS MUST BE CONTINUOUS COPPER STRANDED AND FREE FROM SPLICES. **ALUMINUM OR SOLID WIRES ARE NOT ALLOWED.**
- NOTE 2: WIRE SIZES GIVEN ARE FOR USE OF EQUIPMENT. LARGER SIZES MAY BE REQUIRED BY LOCAL CODES.
- NOTE 3: IT IS RECOMMENDED THAT ALL WIRES BE COLOR CODED, AS REQUIRED IN ACCORDANCE WITH NATIONAL AND LOCAL ELECTRICAL CODES.
- NOTE 4: CONDUIT SIZES SHALL BE VERIFIED BY THE ARCHITECT, ELECTRICAL ENGINEER OR CONTRACTOR, IN ACCORDANCE WITH LOCAL OR NATIONAL CODES.
- NOTE 5: CONVENIENCE OUTLETS ARE NOT ILLUSTRATED. THEIR NUMBER AND LOCATION ARE TO BE SPECIFIED BY OTHERS. LOCATE AT LEAST ONE CONVENIENCE OUTLET CLOSE TO THE SYSTEM CONTROL, THE POWER DISTRIBUTION UNIT AND ONE ON EACH WALL OF THE PROCEDURE ROOM. USE HOSPITAL APPROVED OUTLET OR EQUIVALENT.
- NOTE 6: GENERAL ROOM ILLUMINATION IS NOT ILLUSTRATED. CAUTION SHOULD BE TAKEN TO AVOID EXCESSIVE HEAT FROM OVERHEAD SPOTLIGHTS. DAMAGE CAN OCCUR TO CEILING MOUNTING COMPONENTS AND WIRING IF HIGH WATTAGE BULBS ARE USED. RECOMMEND LOW WATTAGE BULBS NO HIGHER THAN 75 WATTS AND USE DIMMER CONTROLS (EXCEPT MR). DO NOT MOUNT LIGHTS DIRECTLY ABOVE AREAS WHERE CEILING MOUNTED ACCESSORIES WILL BE PARKED.
- NOTE 7: ROUTING OF CABLE DUCTWORK, CONDUITS, ETC., MUST RUN DIRECT AS POSSIBLE OTHERWISE MAY RESULT IN THE NEED FOR GREATER THAN STANDARD CABLE LENGTHS (REFER TO THE INTERCONNECTION DIAGRAM FOR MAXIMUM USABLE LENGTHS POINT TO POINT).
- NOTE 8: CONDUIT TURNS TO HAVE LARGE, SWEEPING BENDS WITH MINIMUM RADIUS IN ACCORDANCE WITH NATIONAL AND LOCAL ELECTRICAL CODES.
- NOTE 9: A SPECIAL GROUNDING SYSTEM IS REQUIRED IN ALL PROCEDURE ROOMS BY SOME NATIONAL AND LOCAL CODES. IT IS RECOMMENDED IN AREAS WHERE PATIENTS MIGHT BE EXAMINED OR TREATED UNDER PRESENT, FUTURE, OR EMERGENCY CONDITIONS. CONSULT THE GOVERNING ELECTRICAL CODE AND CONFER WITH APPROPRIATE CUSTOMER ADMINISTRATIVE PERSONNEL TO DETERMINE THE AREAS REQUIRING THIS TYPE OF GROUNDING SYSTEM.
- NOTE 10: THE MAXIMUM POINT TO POINT DISTANCES ILLUSTRATED ON THIS DRAWING MUST NOT BE EXCEEDED.
- NOTE 11: PHYSICAL CONNECTION OF PRIMARY POWER TO GE EQUIPMENT IS TO BE MADE BY CUSTOMERS ELECTRICAL CONTRACTOR WITH THE SUPERVISION OF A GE REPRESENTATIVE. THE GE REPRESENTATIVE WOULD BE REQUIRED TO IDENTIFY THE PHYSICAL CONNECTION LOCATION, AND INSURE PROPER HANDLING OF GE EQUIPMENT.

DIAGRAM KEY

- CUSTOMER/CONTRACTOR SUPPLIED WIRING. ROUTE IN ADEQUATE CONDUIT OR RACEWAY.
- GE FURNISHED CABLE RUNS. ROUTE IN EMPTY CONDUIT OR RACEWAY.
- 59' [18M] MAXIMUM RUN LENGTH BETWEEN JUNCTION POINTS. Feet [Meters]

THIS SHEET IS PART OF THE DOCUMENT SET LISTED ON SHEET C1 AND SHOULD NOT BE SEPARATED

SHEET TITLE: ELECTRICAL SPECIFICATIONS

MODALITY TYPE: DISCOVERY ST

THIS PLAN IS SUBMITTED TO SUGGEST LOCATION OF GE HEALTHCARE EQUIPMENT AND ASSOCIATED APPARATUS, ELECTRICAL WIRING DETAILS AND ROOM ARRANGEMENTS. IT IS NOT TO BE USED FOR CONSTRUCTION PURPOSES. IT IS NOT TO BE USED FOR ACTUAL CONSTRUCTION PURPOSES. HOWEVER, THE COMPANY CANNOT ACCEPT RESPONSIBILITY FOR ANY DAMAGES RESULTING THEREFROM.

PROJECT TITLE:  
TYPICAL CT-PET  
12-12F

PROJECT

12-12f 03

DATE: 12.Mar.12

DRAWN BY: TMS

CHECKED BY: TMS

REVISION HISTORY:

\_\_\_\_\_  
 \_\_\_\_\_  
 \_\_\_\_\_  
 \_\_\_\_\_

SHEET

E2

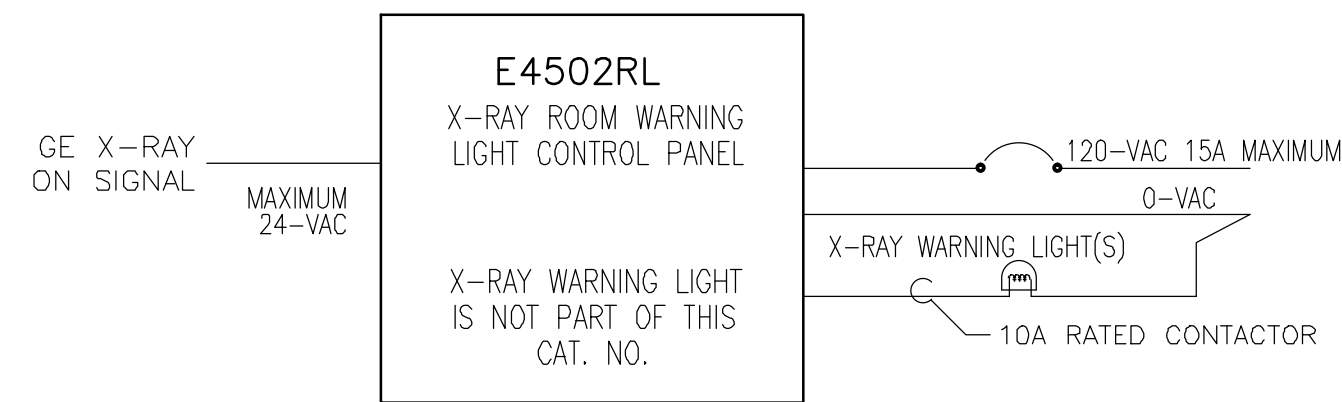
979-322

GE Healthcare  
 IS Services Design Center  
 Milwaukee, Wisconsin

ELECTRICAL DETAIL  
WARNING LIGHT DIAGRAM

ELEC-72

REV. DATE: 05/14/09

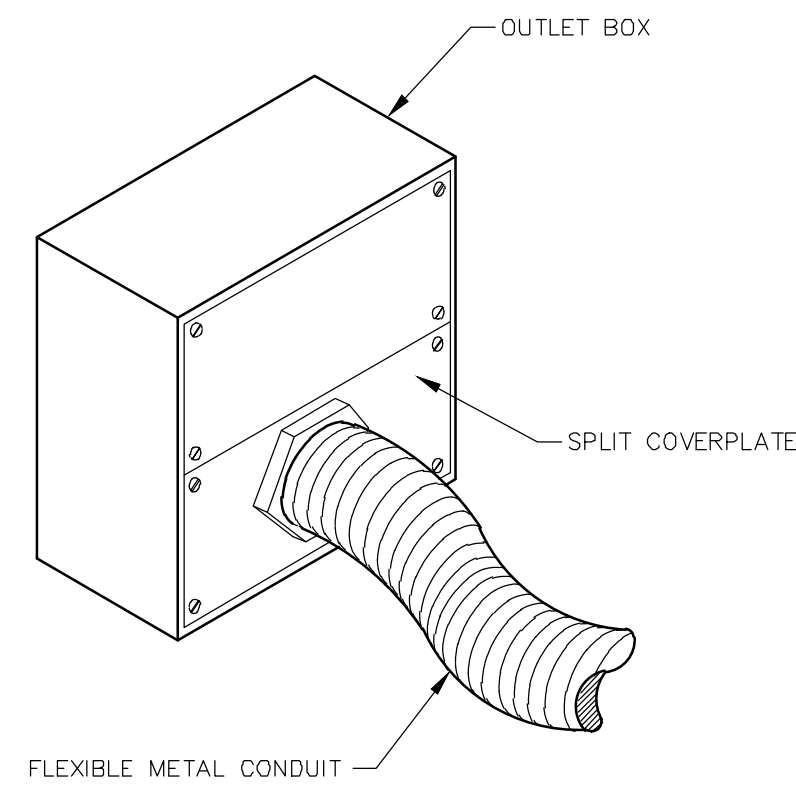


UNLESS SPECIFIED ON SHEET A1 AS BEING INCLUDED ON EQUIPMENT ORDER, ALL ITEMS ILLUSTRATED ARE TO BE FURNISHED AND INSTALLED BY CUSTOMER'S CONTRACTOR  
DRAWING NOT TO SCALE

ELECTRICAL DETAIL  
BOX WITH SPLIT COVERPLATE (TYPICAL)

ELEC-22

REV. DATE: 10/13/94

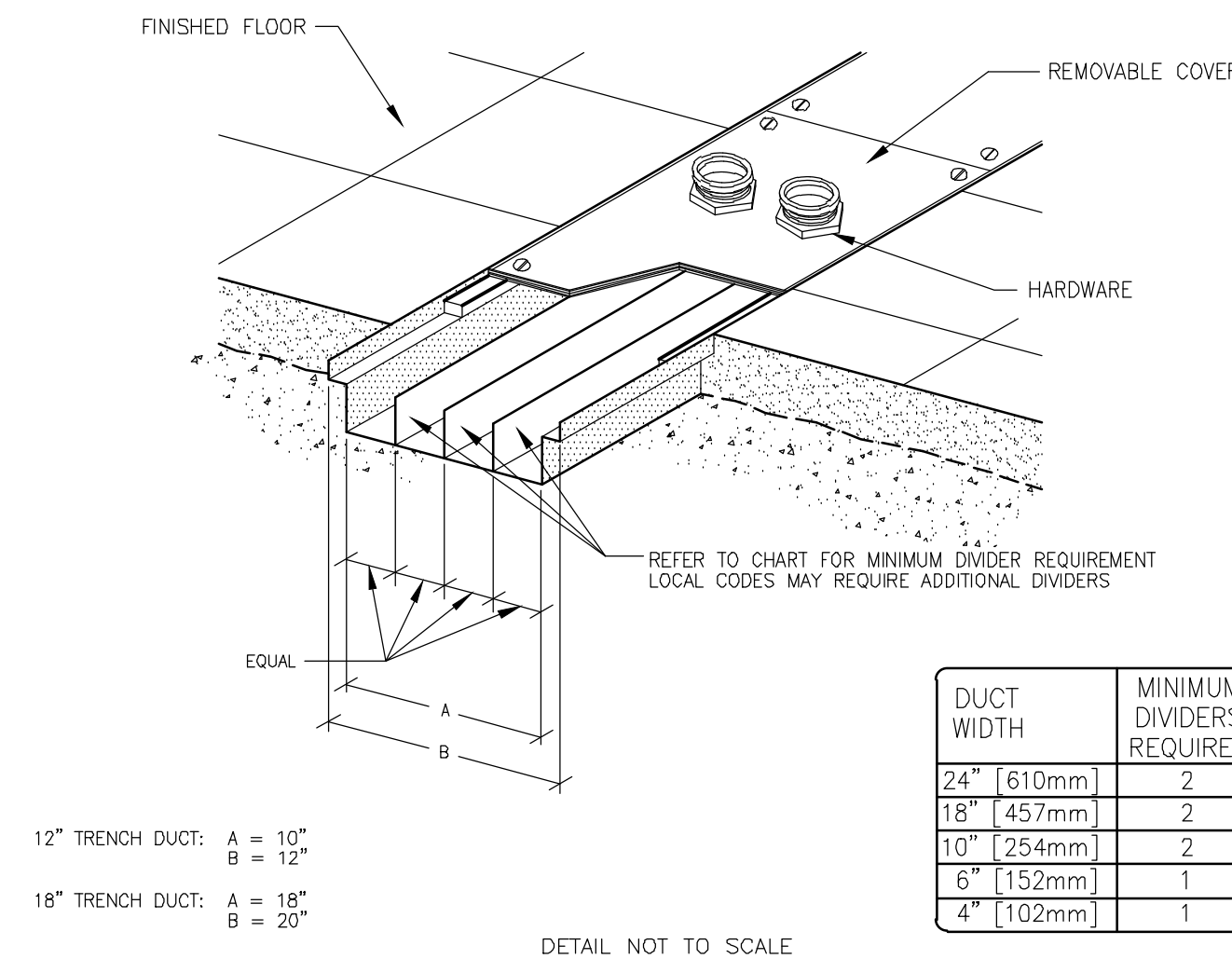


DETAIL NOT TO SCALE

ELECTRICAL DETAIL  
FLUSH FLOOR DUCT (TYPICAL)

ELEC-25

REV. DATE: 4/01/04

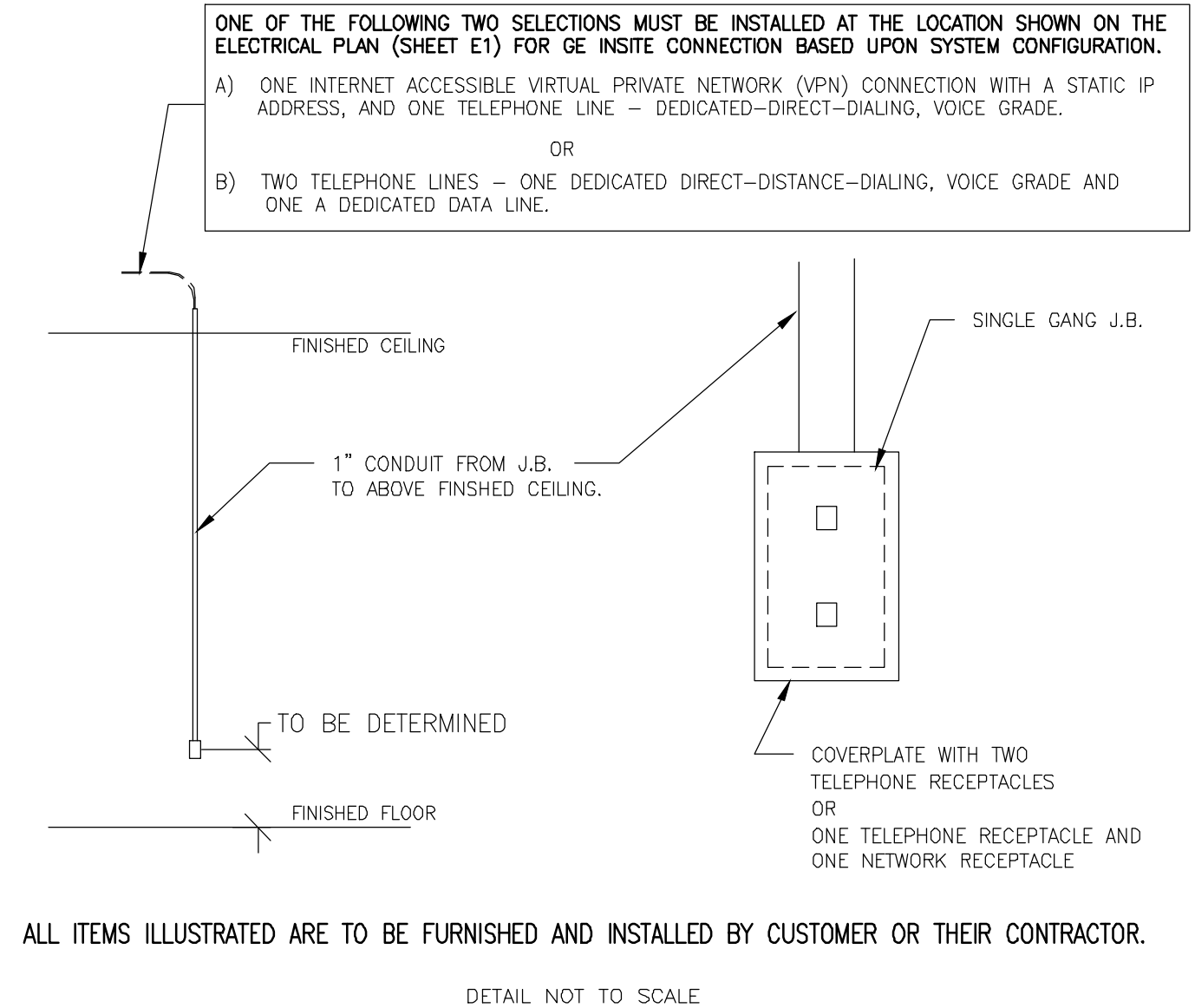


DETAIL NOT TO SCALE

ELECTRICAL DETAIL  
INSITE CONNECTION (TYPICAL)

ELEC-1

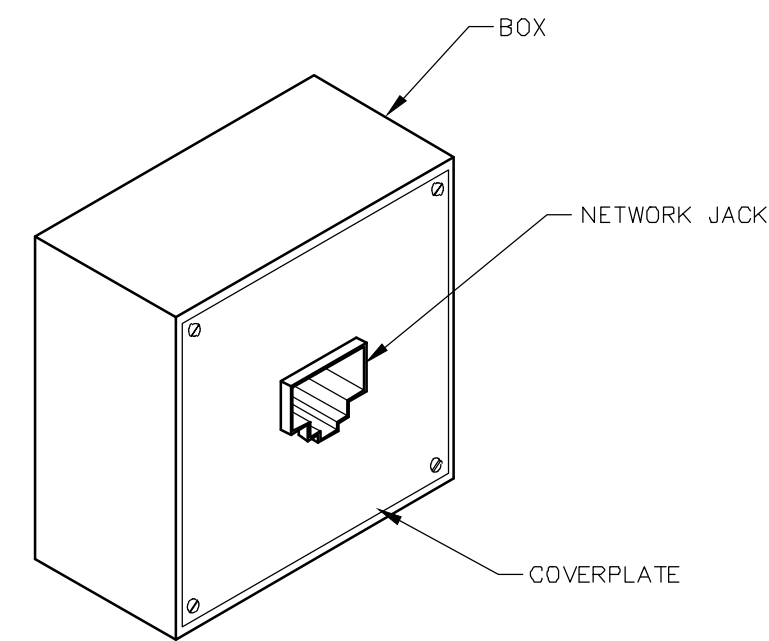
REV. DATE: 04/24/02



ELECTRICAL DETAIL  
BOX WITH COVERPLATE AND NETWORK JACK

ELEC-83

REV. DATE: 10/06/98

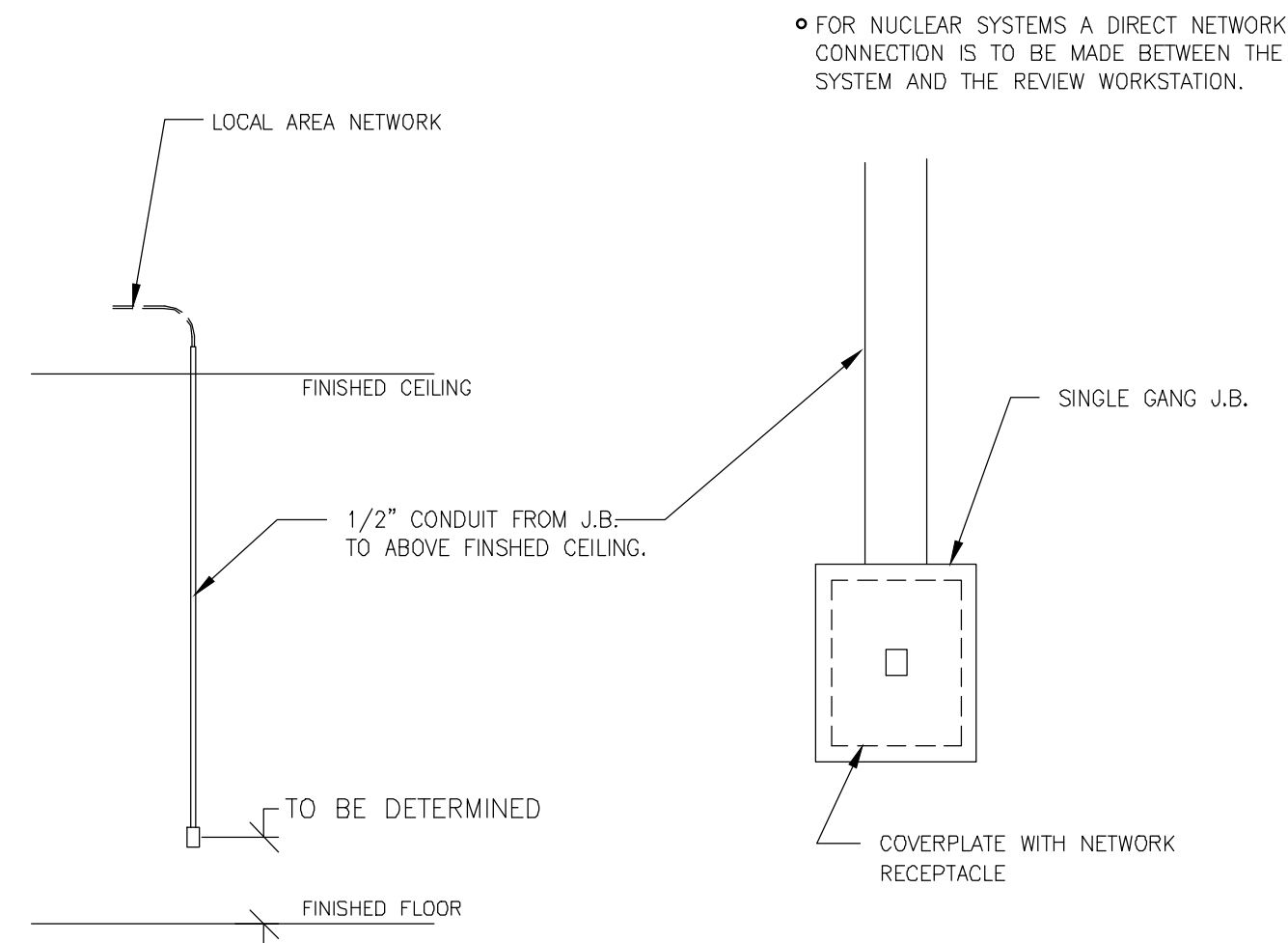


DETAIL NOT TO SCALE

ELECTRICAL DETAIL  
NETWORK CONNECTION (TYPICAL)

ELEC-84

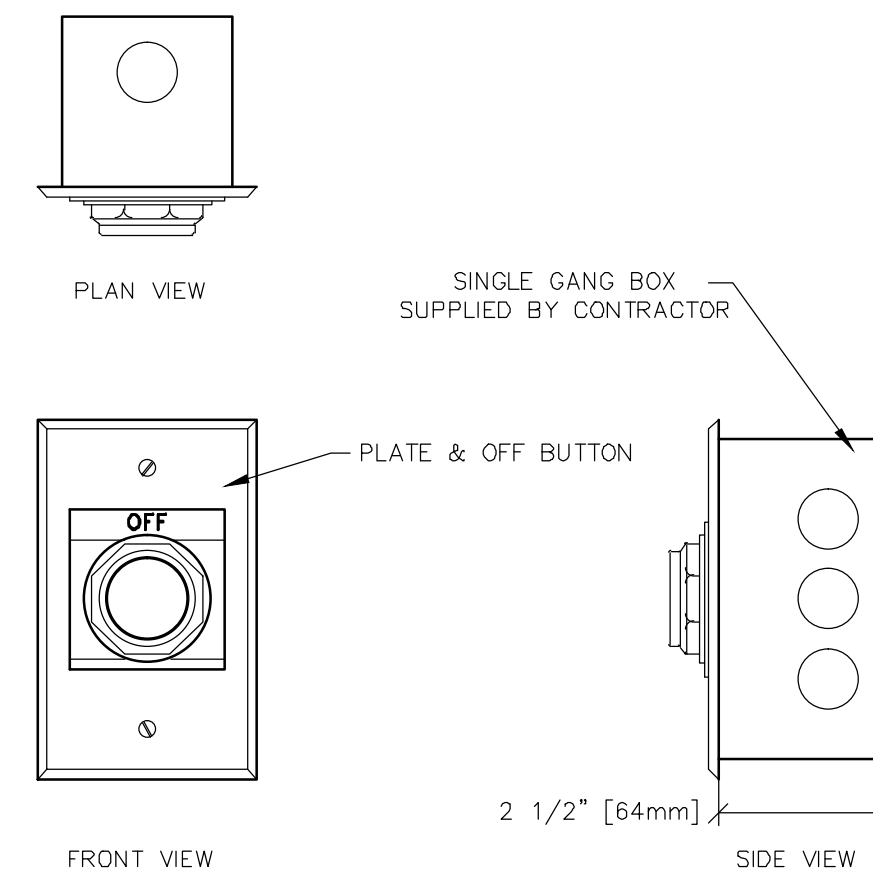
REV. DATE: 03/06/04



ELECTRICAL DETAIL  
EMERGENCY OFF BUTTON

ELEC-16

REV. DATE: 05/14/09



SHEET TITLE: ELECTRICAL DETAILS

MODALITY TYPE: DISCOVERY ST

THIS PLAN IS SUBMITTED TO SUGGEST LOCATION OF GE HEALTHCARE EQUIPMENT AND ASSOCIATED APPARATUS, ELECTRICAL WIRING DETAILS AND ROOM ARRANGEMENTS. GE HEALTHCARE IS NOT RESPONSIBLE FOR THE ACCURACY OF THE INFORMATION PROVIDED TO ACTUAL EQUIPMENT PURPOSES. HOWEVER, THE COMPANY CANNOT ACCEPT RESPONSIBILITY FOR ANY DAMAGES RESULTING THEREFROM.

PROJECT TITLE:  
TYPICAL CT-PET  
12-12F

PROJECT REVISION  
12-12f 03

DATE: 12.Mar.12  
DRAWN BY: TMS  
CHECKED BY: TMS

REVISION HISTORY:

SHEET  
E3

### EQUIPMENT DETAIL SMALL SCSI PERIPHERALS ENCLOSURE

**P5050F**  
REV. DATE: 10/27/98

DETAIL NOT TO SCALE

### EQUIPMENT DETAIL POWER DISTRIBUTION UNIT

**B79-96L**  
REV. DATE: 4/22/96

NOTE:  
• INDICATES AIR FLOW  
• INDICATES CENTER OF GRAVITY

PLAN VIEW FRONT VIEW SIDE VIEW

### EQUIPMENT DETAIL PET HOST COMPUTER CABINET

**P5056E**  
REV. DATE: 12/28/04

PLAN VIEW FRONT VIEW SIDE VIEW

DETAIL NOT TO SCALE

### EQUIPMENT DETAIL OPERATORS CONSOLE

**B78-58A**  
REV. DATE: 01/28/11

SHIPPING DIMENSIONS: 46"(1170mm)D x 53"(1340mm)W x 45"(1150mm)H

NOTE:  
• INDICATES AIR FLOW  
• INDICATES CENTER OF GRAVITY

SEISMIC BRACKET PROVIDED WITH CONSOLE

DIM	MIN.	MAX.
"A"	26.77" [680mm]	34.76" [883mm]
"B"	26.77" [680mm]	31.77" [807mm]
"C"	40.16" [1020mm]	48.35" [1228mm]
"D"	16.77" [426mm]	24.96" [634mm]

PLAN VIEW FRONT VIEW SIDE VIEW

### EQUIPMENT DETAIL MAIN DISCONNECT CONTROL

**P5050R**  
REV. DATE: 10/21/05

NOTE:  
• ALL DIMENSIONS ARE IN INCHES  
• ALL BRACKETED ( ) DIMENSIONS ARE IN MILLIMETERS.

CAT. NUMBERS:  
110 AMP. (P5051RK)  
90 AMP. (P5051RJ)

TOP VIEW FRONT VIEW SIDE VIEW BACK VIEW

DETAIL NOT TO SCALE

### EQUIPMENT DETAIL DISCOVERY ST GANTRY AND TABLE

**P5056**  
REV. DATE: 01/30/06

SHIPPING DIMENSIONS: PET BASE WITH DOLLIES 88.5"(2248mm)L x 41.5"(1054mm)W x 43.5"(1105mm)H

SHIPPING DIMENSIONS: PET IMAGE RING WITH DOLLIES 110"(2794mm)L x 41.5"(1054mm)W x 73.5"(1867mm)H

SHIPPING DIMENSIONS: PET TRAILER WITH DOLLIES 96"(2439mm)L x 41"(1042mm)W x 55.5"(1410mm)H

SIDE VIEW

DETAIL NOT TO SCALE

### EQUIPMENT DETAIL DISCOVERY ST GANTRY AND TABLE

**P5056A**  
REV. DATE: 01/30/06

PLAN VIEW

DETAIL NOT TO SCALE

### EQUIPMENT DETAIL CT TYPICAL SCATTER SURVEY

**B79-96ME**  
REV. DATE: 11.Apr.11

NOTE: LARGE FILTER  
ISO-CONTOUR LEVELS: 0.65, 1.3, 2.6 AND 5.2 uGy/SCAN  
TECHNIQUE: 140 KV, 100 MA, 1 SEC, 4 X 5.00MM

PLAN VIEW ELEVATION

APPROX. 50 Inches [127cm]

### EQUIPMENT DETAIL CT TYPICAL SCATTER SURVEY

**B79-96MF**  
REV. DATE: 11.Apr.11

NOTE: SMALL FILTER  
ISO-CONTOUR LEVELS: 0.33, 0.65, 1.3 AND 2.6 uGy/SCAN  
TECHNIQUE: 140 KV, 100 MA, 1 SEC, 4 X 5.00MM

PLAN VIEW ELEVATION

APPROX. 50 Inches [127cm]

### EQUIPMENT DETAIL DISCOVERY ST, CT GANTRY SHIPPING DETAIL

**P5056B**  
REV. DATE: 05/23/05

PLAN VIEW

GANTRY DELIVERY SIZE OPTIONS						
CONFIGURATION	WEIGHT lb [kg]	WIDTH in. [mm]	DEPTH in. [mm]	HEIGHT in. [mm]	PERSONS NEEDED	ADDITIONAL PERSON HOURS
NORMAL SHIPPING CONFIGURATION	3800 [1724]	114 [2895]	51 [1295]	79 [2006]	2	0
REMOVE PROTECTIVE SIDE RAILS	3712 [1684]	114 [2895]	42 [1060]	79 [2006]	2	0.5
REMOVE SIDE RAILS AND ONE DOLLY	3476 [1567]	99 [2515]	43 [1092]	81 [2082]	2	1.5
GANTRY SET ON AUX. DOLLIES	3400 [1542]	88 [2235]	43 [1092]	84.3 [2141]	2	2.5
REMOVE COVERS - USE SHIPPING DOLLIES	3392 [1539]	110 [2794]	40 [1016]	77 [1956]	4	1.5
REMOVE COVERS - USE AUX. DOLLIES	3080 [1397]	83 [2109]	40 [1016]	78.3 [1989]	4	3.5
REMOVE COVERS AND DOLLIES - HOST WITH SHACKLES	2930 [1325]	83 [2109]	40 [1016]	78 [1980]	4	3.5

### EQUIPMENT DETAIL DISCOVERY ST, PET GANTRY & TABLE SHIPPING INFORMATION

**P5056C**  
REV. DATE: 06/05/03

PET GANTRY DELIVERY SIZE OPTIONS				
CONFIGURATION	WEIGHT lb [kg]	LENGTH in. [mm]	WIDTH in. [mm]	HEIGHT in. [mm]
PET BASE WITH DOLLIES	1430 [649]	88.0 [2248]	41.0 [1054]	43.6 [1105]
PET BASE WITHOUT DOLLIES*	1070 [485]	84.5 [2154]	41.5 [1054]	15.5 [267]
PET IMAGE RING WITH DOLLIES	2935 [1331]	110 [2794]	41.5 [1054]	73.5 [1867]
PET IMAGE RING WITHOUT DOLLIES*	2210 [1002]	81.5 [2070]	36 [914]	73.5 [1867]
PET TRAILER WITH DOLLIES	1415 [642]	88 [2248]	41 [1042]	55.5 [1410]
PET TRAILER WITHOUT DOLLIES*	730 [331]	71.5 [1816]	32.75 [832]	55.5 [1410]

PATIENT TABLE DELIVERY SIZE OPTIONS				
CONFIGURATION	WEIGHT lb [kg]	LENGTH in. [mm]	WIDTH in. [mm]	HEIGHT in. [mm]
PATIENT TABLE WITH DOLLIES	1650 [728]	136.5 [3467]	29.1 [739]	30 [762]
PATIENT TABLE WITHOUT DOLLIES*	1323 [596]	109.75 [2786]	24.7 [627]	30 [762]

\* NOTE: DELIVERING EQUIPMENT WITHOUT DOLLIES IS NOT STANDARD AND REQUIRES SPECIAL HANDLING. WORK WITH GE'S FIELD REP. TO PLAN FOR PROPER COORDINATION OF THIS ADDITIONAL HARDWARE, MANPOWER, RIGGERS AND COST MAY OCCUR.

### EQUIPMENT DETAIL DISCOVERY ST DOSE RATE

**P5056D**  
REV. DATE: 06/05/03

PLAN VIEW

DETAIL NOT TO SCALE

\*DOSE RATE PER mCi mR/hr/mCi

**GE Healthcare**  
IS Services Design Center  
Milwaukee, Wisconsin

SHEET TITLE: EQUIPMENT DETAILS  
MODALITY TYPE: DISCOVERY ST

THIS PLAN IS SUBMITTED TO SUGGEST LOCATION OF GE HEALTHCARE EQUIPMENT AND ASSOCIATED APPARATUS, ELECTRICAL WIRING DETAILS AND ROOM ARRANGEMENTS. GE HEALTHCARE SHALL NOT BE RESPONSIBLE FOR THE DESIGN OF THE EQUIPMENT TO BE INSTALLED. THIS IS NOT TO BE USED FOR ACTUAL CONSTRUCTION PURPOSES; HOWEVER, AND THE COMPANY CANNOT ACCEPT RESPONSIBILITY FOR ANY DAMAGES RESULTING THEREFROM.

PROJECT TITLE:  
**TYPICAL CT-PET  
12-12F**

PROJECT: 12-12f  
REVISION: 03

DATE: 12.Mor.12  
DRAWN BY: TMS  
CHECKED BY: TMS

REVISION HISTORY:

SHEET  
**D1**