



GE Healthcare
Project Management

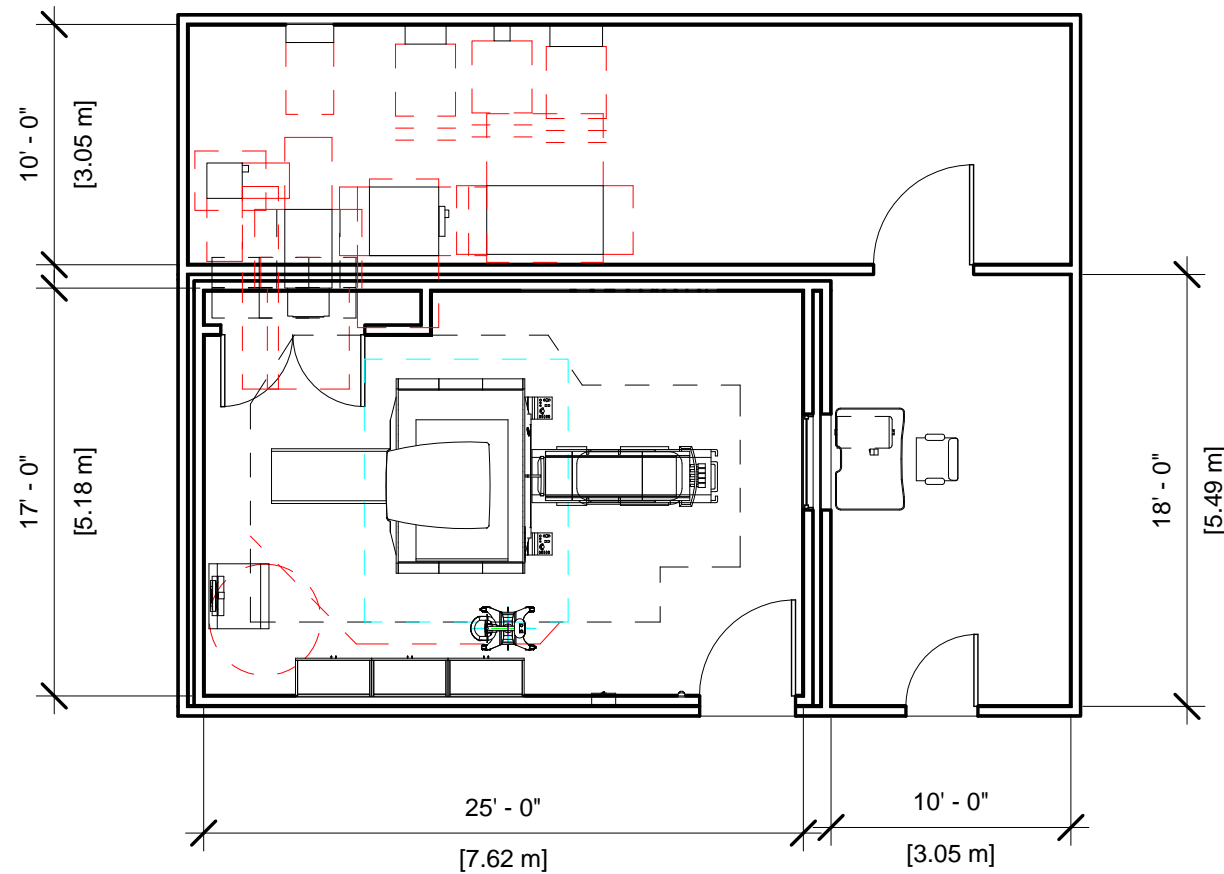
GE Healthcare has made reasonable efforts to ensure this BIM file conforms to requirements of the applicable pre-installation manual. This BIM file was produced to assist with site planning and is not intended for construction or final building modeling. GE Healthcare is not responsible for any damages resulting from use of such file for construction or final building modeling purposes. Compliance with all applicable local, state, and federal laws and regulations is the responsibility of the customer or its designated architects and engineers. Please keep in mind the information in this BIM file is dynamic and is subject to change without notice. It is the responsibility of the customer or its designated architect(s) and engineer(s) to ensure they have the latest equipment or product information.

OPTIMA MR450W - RENDERING

Project number	8-230
Date	05.APRIL.17
Drawn by	GENPACT
Checked by	

A-1

Scale 12" = 1'-0"



Specialty Equipment Schedule

Description	Weight (lbs)	BTU
MANUAL CRYOGEN COMPRESSOR	0	0
WATER BYPASS PANEL		
DC LIGHTING CONTROL PANEL	155	1024
WATER FILTER	0	0
SPT PHANTOM CABINET	350	0
MAGNET RUNDOWN UNIT	8	0
MAIN DISCONNECT CONTROL	130	901
POWER, GRADIENT, RF CABINET	3143	20945
SHIELD COOLER CABINET	264	1706
HEAT EXCHANGER CABINET	1349	3412
MAGNET MONITOR	11	819
PIPING FOR COOLING SYSTEM	0	0
BLOWER BOX	0	1535
PEN PANEL CABINET	639	11722
RF PENETRATION PANEL	92	0
RF FILTERS	0	0
DC LIGHTING TRANSFORMER	60	171
ROOM SUPPLY CABINET	0	0
ROOM SUPPLY CABINET	0	0
ROOM SUPPLY CABINET	0	0
1.5 TESLA ACTIVE SHIELD MAGNET	11684	8191
PATIENT TRANSPORT TABLE	418	0
REAR PEDESTAL	212	0
CONTROL ROOM		
WORKSTATION TABLE	0	0
OPERATOR WORKSPACE WITH LCD MONITOR	0	4948
OPERATORS CHAIR	0	0
OPERATOR WORKSPACE CABINET	141	0
PATIENT ALERT CONTROL BOX	0	0



GE Healthcare
Project Management

GE Healthcare has made reasonable efforts to ensure this BIM file conforms to requirements of the applicable pre-installation manual. This BIM file was produced to assist with site planning and is not intended for construction or final building modeling. GE Healthcare is not responsible for any damages resulting from use of such file for construction or final building modeling purposes. Compliance with all applicable local, state, and federal laws and regulations is the responsibility of the customer or its designated architects and engineers. Please keep in mind the information in this BIM file is dynamic and is subject to change without notice. It is the responsibility of the customer or its designated architect(s) and engineer(s) to ensure they have the latest equipment or product information.

OPTIMA MR450W FLOOR PLAN & SCHEDULE

Project number	8-230
Date	05.APRIL.17
Drawn by	GENPACT
Checked by	

A-2

Scale 1/8" = 1'-0"

Hold the Left Click for Rotating around
Use the Scroll for Zooming in and out



8-230 - Optima MR450W 1.5T



GE Healthcare

[Click for Site Planning Support](#)