



**GE Healthcare**  
**Project Management**

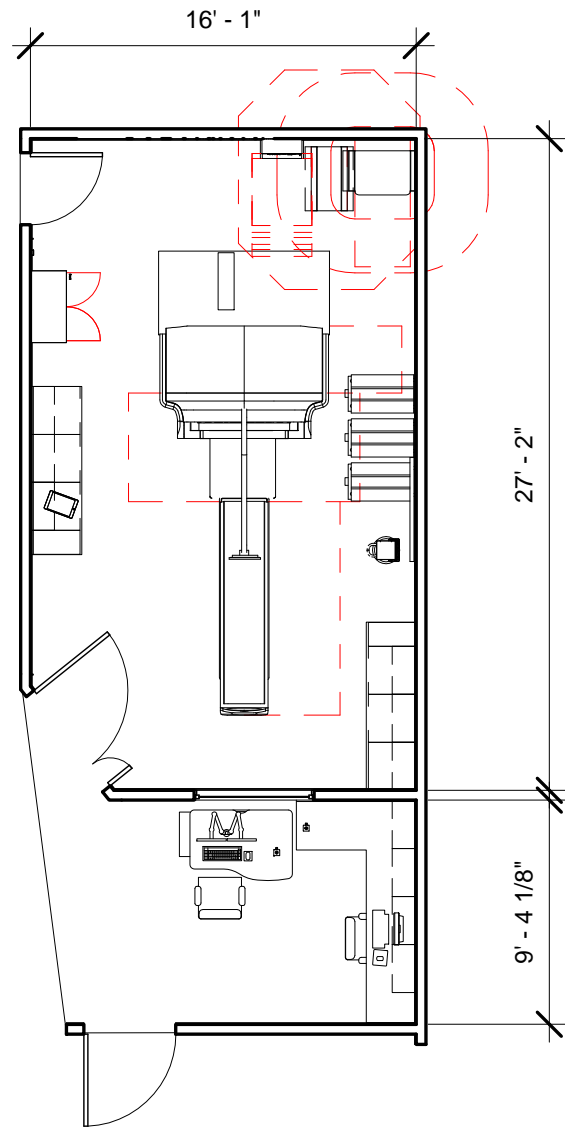
GE Healthcare has made reasonable efforts to ensure this BIM file conforms to requirements of the applicable pre-installation manual. This BIM file was produced to assist with site planning and is not intended for construction or final building modeling. GE Healthcare is not responsible for any damages resulting from use of such file for construction or final building modeling purposes. Compliance with all applicable local, state, and federal laws and regulations is the responsibility of the customer or its designated architects and engineers. Please keep in mind the information in this BIM file is dynamic and is subject to change without notice. It is the responsibility of the customer or its designated architect(s) and engineer(s) to ensure they have the latest equipment or product information.

**DISCOVERY NMCT670 CZT - RENDERING**

|                       |                  |
|-----------------------|------------------|
| <b>Project number</b> | <b>7-88</b>      |
| <b>Date</b>           | <b>03.MAR.17</b> |
| <b>Drawn by</b>       | <b>GENPACT</b>   |
| <b>Checked by</b>     | <b>-</b>         |

**A-1**

**Scale 12" = 1'-0"**



| Specialty Equipment Schedule    |            |       |
|---------------------------------|------------|-------|
| Description                     | Weight lbs | BTU   |
| STORAGE CABINET                 | 99         | 0     |
| XELERIS WORKSTATION             | 55         | 255   |
| R-WAVE RECORDER                 | 6          | 0     |
| OPERATORS CONSOLE ON CART       |            | 0     |
| DISCOVERY NM/CT 670 GANTRY (CT) | 3899       | 18771 |
| UPS SYSTEM                      | 350        | 3399  |
| POWER DISTRIBUTION UNIT         | 771        | 5119  |
| POWER INPUT DISTRIBUTION BOX    | 22         | 0     |
| MAIN DISCONNECT CONTROL         | 90         | 0     |
| COLLIMATOR CART                 | 1058       | 0     |
| FREEDOM WORKSPACE LARGE TABLE   | 147        | 8191  |
| ESTOP PUSHBUTTON                | 0          | 0     |
| EMO PUSHBUTTON                  | 0          | 0     |
| COLLIMATOR CART                 | 1058       | 0     |
| COLLIMATOR CART                 | 1058       | 0     |
| TABLE SWING                     |            | 0     |



**GE Healthcare**  
Project Management

GE Healthcare has made reasonable efforts to ensure this BIM file conforms to requirements of the applicable pre-installation manual. This BIM file was produced to assist with site planning and is not intended for construction or final building modeling. GE Healthcare is not responsible for any damages resulting from use of such file for construction or final building modeling purposes. Compliance with all applicable local, state, and federal laws and regulations is the responsibility of the customer or its designated architects and engineers. Please keep in mind the information in this BIM file is dynamic and is subject to change without notice. It is the responsibility of the customer or its designated architect(s) and engineer(s) to ensure they have the latest equipment or product information.

**DISCOVERY NMCT 670 CZT - PLAN**

|                |           |
|----------------|-----------|
| Project number | 7-88      |
| Date           | 03.MAR.17 |
| Drawn by       | GENPACT   |
| Checked by     | -         |

**A-2**

Scale 1/8" = 1'-0"

Hold the Left Click for Rotating around  
Use the Scroll for Zooming in and out  
Hold Left click + Ctrl Key to change perspective



Discovery NMCT 670 CZT



GE Healthcare

Click for Site Planning Support