



GE Healthcare
Project Management

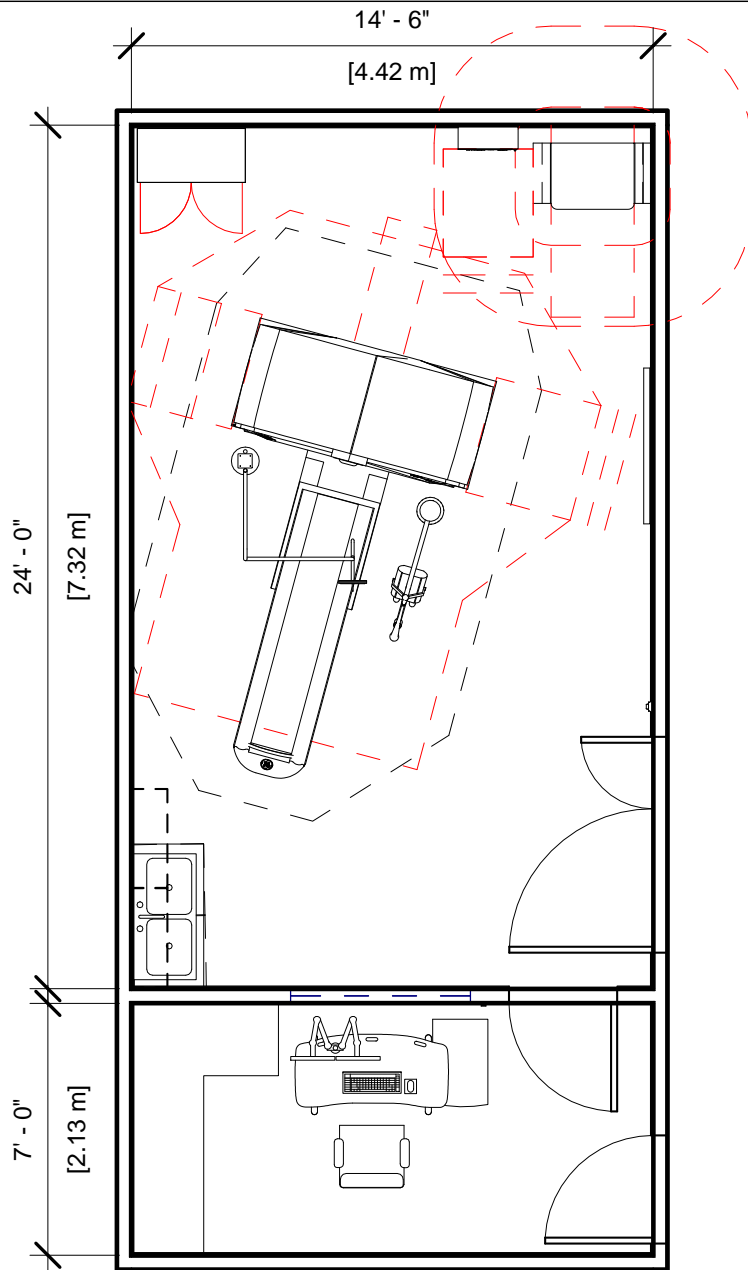
GE Healthcare has made reasonable efforts to ensure this BIM file conforms to requirements of the applicable pre-installation manual. This BIM file was produced to assist with site planning and is not intended for construction or final building modeling. GE Healthcare is not responsible for any damages resulting from use of such file for construction or final building modeling purposes. Compliance with all applicable local, state, and federal laws and regulations is the responsibility of the customer or its designated architects and engineers. Please keep in mind the information in this BIM file is dynamic and is subject to change without notice. It is the responsibility of the customer or its designated architect(s) and engineer(s) to ensure they have the latest equipment or product information.

OPTIMA CT540 - RENDERING

Project number	6-90
Date	11.MAY.17
Drawn by	GENPACT
Checked by	

A-1

Scale 12" = 1'-0"



Specialty Equipment Schedule

Description	Weight (lbs)	BTU
CONTROL ROOM		
OPERATORS CONSOLE/CABINET	273	8191
EXAM ROOM		
CT TABLE	1567	1023
CT540 Gantry	3902	18703
POWER DISTRIBUTION UNIT	740	5119
MAIN DISCONNECT CONTROL	90	0
MONITOR ON OVERHEAD COUNTERPOISED SUSPENSION	61	300
INJECTOR HEAD ON OVERHEAD COUNTERPOISED SUSPENSION	79	0
STORAGE CABINET	99	0



**GE Healthcare
Project Management**

GE Healthcare has made reasonable efforts to ensure this BIM file conforms to requirements of the applicable pre-installation manual. This BIM file was produced to assist with site planning and is not intended for construction or final building modeling. GE Healthcare is not responsible for any damages resulting from use of such file for construction or final building modeling purposes. Compliance with all applicable local, state, and federal laws and regulations is the responsibility of the customer or its designated architects and engineers. Please keep in mind the information in this BIM file is dynamic and is subject to change without notice. It is the responsibility of the customer or its designated architect(s) and engineer(s) to ensure they have the latest equipment or product information.

OPTIMA CT540 PLAN & SCHEDULE

Project number	6-90
Date	11.MAY.17
Drawn by	GENPACT
Checked by	

A-2

Scale 3/16" = 1'-0"

Hold the Left Click for Rotating around
Use the Scroll for Zooming in and out



6-90 Optima CT 540



GE Healthcare

[Click for Site Planning Support](#)